

small physical volume. After firing, conductive terminations are applied to opposite ends of the chip to make contact with the exposed electrodes. Termination materials and methods vary depending on the intended use. **TEMPERATURE CHARACTERISTICS:** Class I: C0G: $\pm 0.30\text{ppm}/^\circ\text{C}$ from -55°C to $+125^\circ\text{C}$. Class II: X7R: $\pm 15\%$ from -55°C to $+125^\circ\text{C}$. Class III: Z5U: $+22\%$ from; -56% from $+10^\circ\text{C}$ to $+85^\circ\text{C}$.

KEMET "GOLDEN MAX" HIGH VOLTAGE CERAMIC CONFORMAL COATED CERAMIC RADIAL CAPACITORS

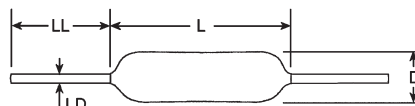
KEMET Golden Max conformal coated ceramic capacitors now have extended voltage ratings up to 3000 volts. **APPLICATIONS:** Military and aerospace, medical, power supplies, telecom, modems and LED backlight inverters.

Cat. No.	WV (DC)	Type	Cap	Dimensions (mm)				Net Price*
				L	H	T	LS	
C315C221J1G5TA	100	NPO	220pF	3.8	5.3	2.5	2.5	\$203.43
C315C331J1G5TA	100	NPO	330pF	3.8	5.3	2.5	2.5	203.43
C315C471J1G5TA	100	NPO	470pF	3.8	5.3	2.5	2.5	203.43
C315C102J1G5TA	100	NPO	1000pF	3.8	5.3	2.5	2.5	236.12
C320C222J1G5TA	100	NPO	2200pF	5.1	6.6	3.2	2.5	300.78
C315C100J2G5TA	200	NPO	10pF	3.8	5.3	2.5	2.5	199.79
C315C220J2G5TA	200	NPO	22pF	3.8	5.3	2.5	2.5	215.78
C315C330J2G5TA	200	NPO	33pF	3.8	5.3	2.5	2.5	215.78
C315C470J2G5TA	200	NPO	47pF	3.8	5.3	2.5	2.5	215.78
C315C101J2G5TA	200	NPO	100pF	3.8	5.3	2.5	2.5	215.78
C317C221J1G5TA	100	NPO	220pF	3.8	5.8	2.5	5.0	203.43
C317C331J1G5TA	100	NPO	330pF	3.8	5.8	2.5	5.0	203.43
C317C471J1G5TA	100	NPO	470pF	3.8	5.8	2.5	5.0	203.43
C317C102J1G5TA	100	NPO	1000pF	3.8	5.8	2.5	5.0	236.12
C322C222J1G5TA	100	NPO	2200pF	5.1	6.6	3.2	5.0	300.78
C317C100J2G5TA	200	NPO	10pF	3.8	5.8	2.5	5.0	199.79
C317C220J2G5TA	200	NPO	22pF	3.8	5.8	2.5	5.0	211.78
C317C330J2G5TA	200	NPO	33pF	3.8	5.8	2.5	5.0	215.78
C317C470J2G5TA	200	NPO	47pF	3.8	5.8	2.5	5.0	215.78
C317C101J2G5TA	200	NPO	100pF	3.8	5.8	2.5	5.0	215.78
C315C103K5R5TA	50	X7R	.01μF	3.8	5.3	2.5	2.5	156.20
C320C223K5R5TA	50	X7R	.022μF	5.1	6.6	3.2	2.5	175.09
C320C473K5R5TA	50	X7R	.047μF	5.1	6.6	3.2	2.5	199.43
C320C683K5R5TA	50	X7R	.068μF	5.1	6.6	3.2	2.5	199.43
C320C224K5R5TA	50	X7R	.22μF	5.1	6.6	3.2	2.5	406.85
C320C104K5R5TA	50	X7R	.1μF	5.1	6.6	3.2	2.5	162.74
C322C103K5R5TA	50	X7R	.01μF	5.1	6.6	3.2	5.0	134.41
C322C223K5R5TA	50	X7R	.022μF	5.1	6.6	3.2	5.0	175.09
C322C473K5R5TA	50	X7R	.047μF	5.1	6.6	3.2	5.0	199.43
C322C224K5R5TA	50	X7R	.22μF	5.1	6.6	3.2	5.0	406.85
C330C224K5R5TA	50	X7R	.22μF	7.6	9.1	3.8	5.0	589.94
C322C104K5R5TA	50	X7R	.1μF	5.1	6.6	3.2	5.0	162.74
C322C224K5R5TA	50	X7R	.22μF	5.1	6.6	3.2	5.0	406.85
C330C334K5R5TA	50	X7R	.33μF	7.6	9.1	3.8	5.0	634.62
C330C474K5R5TA	50	X7R	.47μF	7.6	9.1	3.8	5.0	634.62
C330C105K5R5TA	50	X7R	1.0μF	7.6	9.1	3.8	5.0	1070.17
C315C102K1R5TA	100	X7R	1000pF	3.8	5.3	2.5	2.5	131.86
C315C222K1R5TA	100	X7R	2200pF	3.8	5.3	2.5	2.5	143.85
C315C332K1R5TA	100	X7R	3300pF	3.8	5.3	2.5	2.5	143.85
C315C472K1R5TA	100	X7R	4700pF	3.8	5.3	2.5	2.5	159.84
C315C103K1R5TA	100	X7R	.01μF	3.8	5.3	2.5	2.5	143.85
C320C223K1R5TA	100	X7R	.022μF	5.1	6.6	3.2	2.5	209.24
C320C333K1R5TA	100	X7R	.033μF	5.1	6.6	3.2	2.5	209.24
C320C104K1R5TA	100	X7R	.1μF	5.1	6.6	3.2	2.5	258.64
C315C102K2R5TA	200	X7R	1000pF	3.8	5.3	2.5	2.5	170.73
C320C103K2R5TA	200	X7R	.01μF	5.1	6.6	3.2	2.5	192.17
C317C102K1R5TA	100	X7R	1000pF	3.8	5.8	2.5	5.0	131.86
C317C222K1R5TA	100	X7R	2200pF	3.8	5.8	2.5	5.0	143.85
C317C332K1R5TA	100	X7R	3300pF	3.8	5.8	2.5	5.0	143.85
C317C472K1R5TA	100	X7R	4700pF	3.8	5.8	2.5	5.0	159.84
C317C103K1R5TA	100	X7R	.01μF	5.1	6.6	3.2	5.0	143.85
C317C223K1R5TA	100	X7R	.022μF	5.1	6.6	3.2	5.0	171.82
C317C104K1R5TA	100	X7R	.1μF	5.1	6.6	3.2	5.0	125.33
C330C104K1R5TA	100	X7R	.1μF	7.6	9.1	3.8	5.0	308.05
C330C224K1R5TA	100	X7R	.22μF	7.6	9.1	3.8	5.0	697.83
C330C474K1R5TA	100	X7R	.47μF	7.6	9.1	3.8	5.0	1334.26
C317C102K2R5TA	200	X7R	1000pF	3.8	5.8	2.5	5.0	170.73
C322C103K2R5TA	200	X7R	.01μF	5.1	6.6	3.2	5.0	192.17
C315C103M5U5TA	50	Z5U	0.01μF	3.8	5.3	2.5	2.5	125.33
C320C104M5U5TA	50	Z5U	0.1μF	5.1	6.6	3.2	2.5	125.33
C320C224M5U5TA	50	Z5U	0.22μF	5.1	6.6	3.2	2.5	242.30
C320C334M5U5TA	50	Z5U	0.33μF	5.1	6.6	3.2	2.5	242.30
C320C474M5U5TA	50	Z5U	0.47μF	5.1	6.6	3.2	2.5	305.14
C317C103M5U5TA	50	Z5U	0.01μF	3.8	5.8	2.5	5.0	125.33
C322C104M5U5TA	50	Z5U	0.1μF	5.1	6.6	3.2	5.0	125.33
C322C224M5U5TA	50	Z5U	0.22μF	5.1	6.6	3.2	5.0	242.30
C322C334M5U5TA	50	Z5U	0.33μF	5.1	6.6	3.2	5.0	242.30
C330C334M5U5TA	50	Z5U	0.33μF	7.6	9.1	3.8	5.0	397.05
C322C474M5U5TA	50	Z5U	0.47μF	5.1	6.6	3.2	5.0	305.14
C330C474M5U5TA	50	Z5U	0.47μF	7.6	9.1	3.8	5.0	397.05
C330C684M5U5TA	50	Z5U	0.68μF	7.6	9.1	3.8	5.0	547.43
C330C105M5U5TA	50	Z5U	1.0μF	7.6	9.1	3.8	5.0	497.31
C330C225M5U5TA	50	Z5U	2.2μF	7.6	9.1	3.8	5.0	850.03
C340C335M5U5TA	50	Z5U	3.3μF	10.2	12	3.8	5.0	3028.87
C340C475M5U5TA	50	Z5U	4.7μF	10.2	12	3.8	5.0	3655.50
C315C103M1U5CA	100	Z5U	0.01μF	3.8	5.3	2.5	2.5	129.69
C320C473M1U5CA	100	Z5U	0.047μF	5.1	6.6	3.2	2.5	179.82
C320C104M1U5CA	100	Z5U	0.1μF	5.1	6.6	3.2	2.5	158.75
C322C103M1U5CA	100	Z5U	0.01μF	5.1	6.6	3.2	5.0	129.69
C322C104M1U5CA	100	Z5U	0.1μF	5.1	6.6	3.2	5.0	158.75
C330C104M1U5CA	100	Z5U	0.1μF	7.6	9.1	3.8	5.0	313.50
C330C224M1U5CA	100	Z5U	0.22μF	7.6	9.1	3.8	5.0	417.75
C330C334M1U5CA	100	Z5U	0.33μF	7.6	9.1	3.8	5.0	417.75
C330C474M1U5CA	100	Z5U	0.47μF	7.6	9.1	3.8	5.0	501.30
C330C105M1U5CA	100	Z5U	1.0μF	10.2	12	3.8	5.0	972.45

*Net Price per 1000.

Cat. No.	WV (DC)	Type	Cap	Dimensions (mm)				Net Price*
				L	H	T	LS	
C320C103KCR5TA	500	X7R	0.01μF	5.1	5.3	2.5	2.5	\$701.46
C323C103KCR5TA	500	X7R	0.01μF	5.1	5.3	3.2	5.0	701.46
C323C473KCR5TA	500	X7R	0.047μF	5.1	5.3	3.2	5.0	1271.42
C330C473KDR5TA	1000	X7R	0.047μF	7.6	9.1	3.8	5.0	1778.89
C330C104KCR5TA	500	X7R	0.10μF	7.6	9.1	3.8	5.0	1535.51
C340C104KDR5TA	1000	X7R	0.10μF	10.2	11.7	3.8	5.0	4366.76
C330C224KCR5TA	500	X7R	0.22μF	7.6	9.1	3.8	5.0	2458.92
C340C224KDR5TA	1000	X7R	0.22μF	10.2	11.7	3.8	5.0	6549.97
C340C474KCR5TA	500	X7R	0.47μF	10.2	11.7	3.8	5.0	6792.99
C350C224KDR5TA	1000	X7R	0.22μF	12.7	14.2	5.1	10	10831.73
C350C474KCR5TA	500	X7R	0.47μF	12.7	14.2	5.1	10	11406.41

*Net Price per 1000.



KEMET CERAMIC "AXIMAX" CONFORMALLY COATED CERAMIC AXIAL CAPACITORS

TEMPERATURE CHARACTERISTICS: Class I: C0G: $0 \pm 30\text{ppm}/^\circ\text{C}$ from -55°C to $+125^\circ\text{C}$. Class II: X7R: $\pm 15\%$ from -55°C to $+125^\circ\text{C}$. Class III: Z5U: $+22\%$ from; -56% from $+10^\circ\text{C}$ to $+85^\circ\text{C}$.

MAXIMUM DIMENSIONS—INCHES & (MILLIMETERS)

Style	L Max.	D Max	LD +.001-.003 (+.025-.076)	LL Min
C410	.170 (4.32)	.100 (2.54)	.020 (.51)	1.0 (25.4)
C412	.170 (4.32)	.120 (3.05)	.020 (.51)	1.0 (25.4)
C420	.260 (6.60)	.100 (2.54)	.020 (.51)	1.0 (25.4)
C430	.290 (7.37)	.150 (3.81)	.020 (.51)	1.0 (25.4)
C440	.400 (10.16)	.150 (3.81)	.020 (.51)	1.0 (25.4)

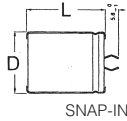
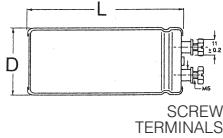
Cat. No.	WV (DC)	Type	Cap	Tol	Net Price*
C410C100J1G5TA	100	C0G	10pF	±5%	\$225.59
C410C220J1G5TA	100	C0G	22pF	±5%	225.59
C410C330J1G5TA	100	C0G	33pF	±5%	225.59
C410C470J1G5TA	100	C0G	47pF	±5%	225.59
C410C101J1G5TA	100	C0G	100pF	±5%	200.52
C410C221J1G5TA	100	C0G	220pF	±5%	225.59
C410C331J1G5TA	100	C0G	330pF	±5%	225.59
C410C471J1G5TA	100	C0G	470pF	±5%	225.59
C410C102J1G5TA	100	C0G	1000pF	±5%	208.88
C410C103K5R5TA	50	X7R	.01μF	±10%	127.87
C410C223K5R5TA	50	X7R	.022μF	±10%	219.77
C410C333K5R5TA	50	X7R	.033μF	±10%	219.77
C410C473K5R5TA	50	X7R	.047μF	±10%	239.75
C412C104K5R5TA	50	X7R	.1μF	±10%	151.84
C420C104K5R5TA	50	X7R	.1μF	±10%	151.84
C430C224K5R5TA	50	X7R	.22μF	±10%	735.24
C410C102K1R5TA	100	X7R	1000pF	±10%	159.84
C410C222K1R5TA	100	X7R	2200pF	±10%	171.82
C410C332K1R5TA	100	X7R	3300pF	±10%	171.82
C410C472K1R5TA	100	X7R	4700pF	±10%	171.82
C410C103K1R5TA	100	X7R	.01μF	±10%	135.86
C430C473K1R5TA	100	X7R	.047μF	±10%	359.63
C430C104K1R5TA	100	X7R	.1μF	±10%	399.59
C410C103M5U5TA	50	Z5U	.01μF	±20%	103.89
C410C473M5U5TA	50	Z5U	.047μF	±20%	135.86
C410C104M5U5TA	50	Z5U	.1μF	±20%	95.90
C410C224M5U5TA	50	Z5U	.22μF	±20%	199.79
C412C334M5U5TA	50	Z5U	.33μF	±20%	307.68
C430C474M5U5TA	50	Z5U	.47μF	±20%	499.48
C440C105M5U5TA	50	Z5U	1μF	±	

BC COMPONENTS LONG-LIFE ELECTROLYTIC CAPACITORS

FEATURES:

- Useful Life 2000 to 1000 hours at 105°C
- Temperature Range: -40 to +105°C
- Tolerance on Cr: +/-20%

Cat. No.	Cap (µF)	Voltage	Dimensions (mm) (D x L)	Ripple Current	Net Price
2222 138 35101	16	100	7.7 x 12.7	130	\$1.31
2222 138 35471	16	470	10 x 18	360	1.39
2222 138 15102	16	1000	10 x 30	630	1.40
2222 138 36229	25	22	6.3 x 12.7	61	1.19
2222 138 36479	25	47	7.7 x 12.7	96	1.31
2222 138 36101	25	100	6.5 x 18	160	1.03
2222 138 36221	25	220	10 x 18	270	1.39
2222 138 36471	25	470	10 x 25	440	1.68
2222 138 16102	25	1000	12.5 x 30	790	1.60
2222 138 37101	40	100	8 x 18	180	1.11
2222 138 37221	40	220	10 x 25	350	1.68
2222 138 17471	40	470	12.5 x 30	650	1.48
2222 138 17102	40	1000	15 x 30	970	2.06
2222 138 38229	63	22	6.5 x 18	100	1.03
2222 138 38479	63	47	8 x 18	150	1.11
2222 138 38101	63	100	10 x 25	280	1.68
2222 138 18221	63	220	12.5 x 30	560	1.47
2222 138 18471	63	470	15 x 30	860	2.02
2222 138 18102	63	1000	18 x 40	1460	3.21
2222 138 19101	100	100	12.5 x 30	410	1.55
2222 138 19221	100	220	15 x 30	650	2.17
2222 138 19471	100	470	18 x 40	1130	3.44



BC COMPONENTS LONG-LIFE SNAP-IN CAPACITORS

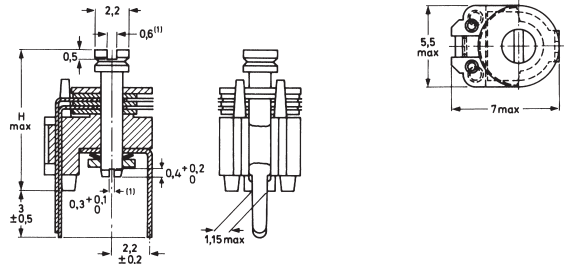
FEATURES: Long life up to 10000 hours at 105°C. Low ESR, high ripple current capability. **SPECIFICATIONS:** Temperature range: -40 to 105°C. Tolerance: ±20%. Shelf life at 40°C and 1.9xI_r applied: 500 hours. Climatic category IEC 60068: 40/105/56.

Cat. No.	Cap (µF)	Diameter D x L (mm)	Ripple Current (A)	Max. ESR Ohms 120 Hz +20°C	Net Price
40VDC					
222205857222	2200	22 x 30	2.04	87	\$3.54
222205857332	3300	25 x 30	2.43	71	3.98
222205857472	4700	30 x 30	2.96	59	4.67
222205857103	10000	35 x 40	4.18	46	6.76
63VDC					
222205858222	2200	30 x 30	2.27	101	4.62
222205858332	3300	30 x 40	3.07	70	5.45
222205858472	4700	35 x 40	3.65	60	6.62
222205858682	6800	35 x 50	4.58	46	7.89
222205859102	1000	30 x 30	1.79	163	4.67

BC COMPONENTS SCREW TERMINAL HIGH RIPPLE POWER CAPACITORS

FEATURES: Long life. Pressure relief in the sealing. **SPECIFICATIONS:** Temperature range: -40 to +85°C. Tolerance: ±20%. Shelf life at 0V, 85°C: 500 hours. Climatic category IEC 60068: 40/085/56.

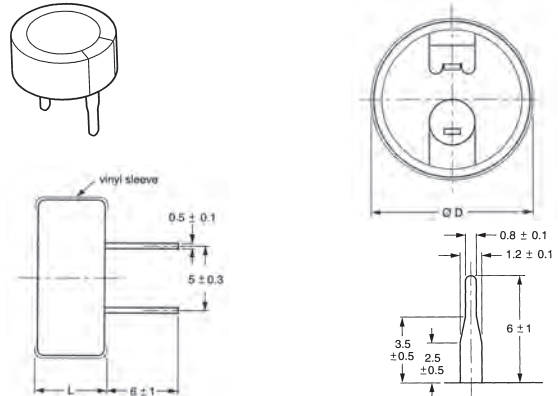
Cat. No.	Cap (µF)	Diameter D x L (mm)	Ripple Current (A)	Max. ESR Ohms 120 Hz +20°C	Net Price
25VDC					
222210126333	33000	50 x 80	9	19	\$21.82
222210116473	47000	35 x 105	12.1	15	21.45
40VDC					
222210127473	47000	50 x 105	14.6	12	31.18
63VDC					
222210128103	10000	35 x 105	8.1	27	20.25
222210128223	22000	50 x 105	11.1	19	29.78
222210128333	33000	65 x 105	12.9	14	42.17
100VDC					
222210129332	3300	35 x 80	6	42	18.98
222210129103	10000	50 x 105	10.5	21	32.92
250VDC					
222210223682	6800	76 x 146	18.1	21	51.89
450VDC					
222210227102	1000	50 x 105	5.7	118	32.35



BC COMPONENTS 808 FILM DIELECTRIC TRIMMER CAPACITORS

The 808 series trimmer capacitors has been designed primarily for UHF and VHF industrial communications. These high stability trimmers are designed for professional or consumer use, vertical or horizontal mounting and are intended for printed circuit board usage. The vanes are stacked on a straight mopolen base with plastic dielectric foils. The top end of the rotor spindle has a screw-driver slot which facilitates adjustment of the trimmer. **SPECIFICATIONS:** Working voltage: 250VDC. Temperature range: -40°C to +70°C.

Cat. No.	Max. Cap. pF	Min. Cap. pF	Temp. Coeff. PPM	Colour of Base	Net Price
5MM VERSION					
222280823508	1.5	5.0	-200±300	Grey	\$0.83
222280823109	2.0	10	-200±300	Yellow	.82
222280823159	2.5	15	-50±200	Blue	.96
222280823209	4.0	20	-50±300	Green	1.09
7.5MM VERSION					
222280811558	1.4	5.5	-400±300	Grey	.68
222280811109	2.0	9.0	-450±450	Yellow	.68
222280811229	2.0	22	-250±350	Green	.68
222280811279	2.0	27	-250±300	Red	.68
222280811339	3.0	33	-250±300	Brown	.82
222280811409	3.0	40	-100±300	Violet	.83
222280811509	3.0	50	-100±300	Black	.99
10MM VERSION					
222280831809	6.0	80	-100±300	Red	1.12
222280831101	7.0	100	-100±300	Violet	1.27
222280832659	5.5	65	-200±300	Yellow	1.11



BC COMPONENTS ELECTRIC DOUBLE LAYER CAPACITORS

Suitable for energy storage, for backup of semiconductor memories, telecommunication, audio-video, EDP, general industrial, clock and timer systems. **Specifications:** Operating Temperature Range: -25° to +70°C. Tolerance: -20% to +80%. Working Voltage: 55 WVDC. **Features:** Unlimited charge and discharge cycle numbers. No charge-discharge control circuitry and no series resistor necessary. Available in both vertical and low-profile version. Polarized capacitor with high charge density, alternative product to re-chargeable backup batteries.

Cat. No.	Cap	Diameter D x L (mm)	Inflow Current (µA)	Internal Resistance Ω(1KHz)	Net Price
5.5VDC					
222219612104	0.10F	13 x 7	100	75	\$1.95
222219612224	0.22F	13 x 7	135	75	2.12
222219612474	0.47F	12 x 7.5	216	30	5.30
222219612105	1.0F	12 x 7.5	315	30	5.51