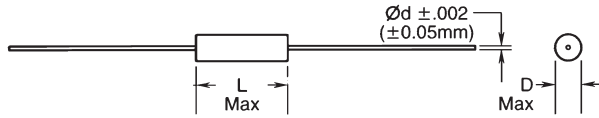


CDE CORNELL DUBILIER

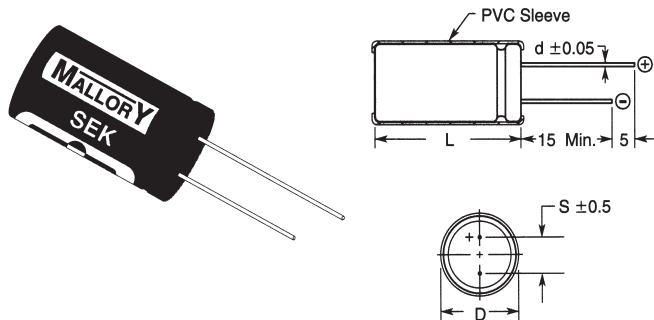
Your Source for Capacitor Solutions



SERIES 150 METALLIZED POLYESTER AXIAL LEADS CAPACITORS

Features: Low Leakage. Non-Polar. Axial Leads, lead material-tinned copper wire (min. lead content 5%). Available tape and reel. Tape wrapped with epoxy end fill. Non inductively wound. Flame retardant polyester wrap meets UL510. Epoxy end fill meets UL94VO. **General Specifications:** Operating temperature: -55°C to 125°C with voltage derating above 85°C. Voltage range: 100 VDC to 630 VDC. Capacitance range: 0.0022 µF to 1.0 µF. Capacitance tolerance: ±5%, ±10%, ±20%.

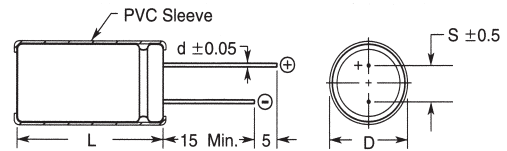
| Cat. No. | Cap. (µF) | Length "L" (mm) | Dia. "D" (mm) | Net Price Each | |
|---|-----------|-----------------|---------------|----------------|--------|
| | | | | 1-499 | 500-Up |
| 100 VDC 5% METALLIZED POLYESTER FILM | | | | | |
| 150104J100AA | 0.1 | 11 | 5 | \$.65 | \$.49 |
| 150224J100CB | 0.22 | 16.5 | 6.5 | .78 | .58 |
| 150334J100EB | 0.33 | 16.5 | 8 | .82 | .54 |
| 150474J100DC | 0.47 | 20.5 | 7 | .94 | .62 |
| 150105J100IC | 1.0 | 20.5 | 10 | 1.44 | .94 |
| 250 VDC 5% METALLIZED POLYESTER FILM | | | | | |
| 150223J250AA | 0.022 | 11 | 5 | .61 | .40 |
| 150333J250AA | 0.033 | 11 | 5 | .61 | .40 |
| 150473J250AA | 0.047 | 11 | 5 | .61 | .40 |
| 150104J250CB | 0.10 | 16.5 | 6.5 | .74 | .48 |
| 150224J250FB | 0.22 | 16.5 | 8.5 | .84 | .62 |
| 150334J250FC | 0.33 | 20.5 | 8.5 | .97 | .63 |
| 150474J250HC | 0.47 | 20.5 | 9.5 | 1.05 | .69 |
| 150105J250JE | 1.0 | 28 | 10.5 | 1.38 | .91 |
| 400 VDC 5% METALLIZED POLYESTER FILM | | | | | |
| 150103J400AA | 0.01 | 11 | 5 | .58 | .43 |
| 150473J400DB | 0.047 | 16.5 | 7.0 | .78 | .52 |
| 150104J400EC | 0.1 | 20.5 | 8 | .88 | .58 |
| 150224J400FE | 0.22 | 28 | 8.5 | 1.13 | .74 |
| 150334J400IE | 0.33 | 28 | 10 | 1.13 | .74 |
| 150474J400LE | 0.47 | 33 | 11.5 | .99 | .66 |
| 630 VDC 5% METALLIZED POLYESTER FILM | | | | | |
| 150222J630AA | 0.0022 | 11 | 5 | .70 | .46 |
| 150332J630AA | 0.0033 | 11 | 5 | .70 | .46 |
| 150472J630AA | 0.0047 | 11 | 5 | .70 | .46 |
| 150103J630BB | 0.01 | 16.5 | 6 | .72 | .47 |
| 150223J630DB | 0.022 | 16.5 | 7 | .80 | .52 |
| 150473J630EC | 0.047 | 20.5 | 8 | .98 | .64 |
| 150104J630FE | 0.1 | 28 | 8.5 | 1.34 | .88 |
| 150224J630LE | 0.22 | 28 | 11.5 | 1.57 | 1.03 |



TYPE SEK ALUMINUM ELECTROLYTIC CAPACITORS RADIAL LEADED

FEATURES: 105°C—long life. High CV product. High reliability. Ideal for high density printed circuit boards. Very high volumetric efficiency. Suitable for general purpose applications, coupling, decoupling, bypass and filtering circuits. **SPECIFICATIONS:** Operating temperature: -40°C to +105°C. Voltage range: 6.3 WVDC to 450 WVDC. Capacitance range: 0.47 µF to 15,000 µF. Capacitance tolerance: ±20%.

| Cat. No. | Cap. µF | Max ESR Ohms @120Hz 25°C | Max Ripple mA @120Hz 85°C | D×L (mm) | Lead-Space (mm) | Net Price |
|----------------|---------|--------------------------|---------------------------|----------|-----------------|-----------|
| 25 VDC | | | | | | |
| SEK100M025ST | 10 | 21.23 | 50.0 | 5×11 | 2.0 | \$.49 |
| SEK220M025ST | 22 | 9.65 | 60.0 | 5×11 | 2.0 | .51 |
| SEK330M025ST | 33 | 6.43 | 75.0 | 5×11 | 2.0 | .53 |
| SEK470M025ST | 47 | 4.52 | 90.0 | 5×11 | 2.0 | .53 |
| SEK101M025ST | 100 | 2.12 | 145.0 | 6×11 | 2.5 | .78 |
| SEK221M025ST | 220 | 0.97 | 250.0 | 8×11 | 3.5 | .99 |
| SEK471M025ST | 470 | 0.45 | 120.5 | 10×16 | 5.0 | 1.89 |
| 35 VDC | | | | | | |
| SEK101M035ST | 100 | 1.86 | 190.0 | 8×11 | 3.5 | .82 |
| SEK221M035ST | 220 | 0.84 | 315.0 | 10×13 | 5.0 | 1.30 |
| 50 VDC | | | | | | |
| SEK010M050ST | 1 | 159.24 | 12.0 | 5×11 | 2.0 | .49 |
| SEK2R2M050ST | 2.2 | 72.38 | 18.0 | 5×11 | 2.0 | .49 |
| SEK3R3M050ST | 3.3 | 48.25 | 25.0 | 5×11 | 2.0 | .43 |
| SEK100M050ST | 10 | 15.92 | 50.0 | 5×11 | 2.0 | .49 |
| SEK220M050ST | 22 | 7.24 | 75.0 | 5×11 | 2.0 | .43 |
| SEK470M050ST | 47 | 3.39 | 125.0 | 6×11 | 2.5 | .88 |
| SEK101M050ST | 100 | 1.59 | 210.0 | 8×11 | 3.5 | 1.01 |
| SEK221M050ST | 220 | 0.72 | 400.0 | 10×16 | 5.0 | 1.70 |
| SEK471M050ST | 470 | 0.34 | 730.0 | 13×21 | 5.0 | 2.89 |
| SEK102M050ST | 1000 | 0.16 | 1110.0 | 16×25 | 7.5 | 6.63 |
| 63 VDC | | | | | | |
| SEK100M063ST | 10 | 13.27 | 55.0 | 5×11 | 2.0 | .49 |
| SEK470M063ST | 47 | 2.82 | 155.0 | 8×11 | 3.5 | .89 |
| 100 VDC | | | | | | |
| SEK100M100ST | 10 | 13.27 | 65.0 | 6×11 | 2.5 | .72 |
| SEK220M100ST | 22 | 6.03 | 115.0 | 8×11 | 3.5 | 1.14 |
| SEK330M100ST | 33 | 4.02 | 160.0 | 10×13 | 5.0 | 1.43 |
| SEK470M100ST | 47 | 2.82 | 210.0 | 10×16 | 5.0 | 1.78 |



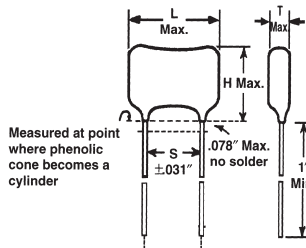
TYPE SK ALUMINUM ELECTROLYTIC RADIAL LEAD CAPACITORS

FEATURES: 85°C general purpose. High CV per case. 2000 hour load life. **SPECIFICATIONS:** -40°C to +85°C. Voltage range: 6.3 WVDC to 450 WVDC. Capacitance: 0.47 µF to 15,000 µF. Capacitance tolerance: ±20%.

| Cat. No. | Cap. (µF) | Max ESR Ohms @120Hz 25°C | Max Ripple mA @120Hz 85°C | D×L (mm) | Lead-Space (mm) | Net Price |
|---------------|-----------|--------------------------|---------------------------|----------|-----------------|-----------|
| 16 VDC | | | | | | |
| SK471M016ST | 470 | 0.45 | 470 | 10×13 | 5.0 | \$1.30 |
| 25 VDC | | | | | | |
| SK100M025ST | 10 | 18.57 | 50 | 5×11 | 2.0 | .42 |
| SK220M025ST | 22 | 8.44 | 90 | 5×11 | 2.0 | .42 |
| SK470M025ST | 47 | 3.95 | 130 | 5×11 | 2.0 | .41 |
| SK101M025ST | 100 | 1.85 | 185 | 6.3×11 | 2.5 | .63 |
| SK331M025ST | 330 | 0.56 | 420 | 10×16 | 5.0 | 1.30 |
| 35 VDC | | | | | | |
| SK100M035ST | 10 | 15.92 | 60 | 5×11 | 2.0 | .42 |
| SK330M035ST | 33 | 4.82 | 115 | 5×11 | 2.0 | .42 |
| SK470M035ST | 47 | 3.38 | 140 | 6.3×11 | 2.5 | .55 |
| SK101M035ST | 100 | 1.59 | 230 | 8×11.5 | 3.5 | .79 |
| SK221M035ST | 220 | 0.72 | 370 | 10×13 | 5.0 | 1.23 |
| SK331M035ST | 330 | 0.48 | 490 | 10×16 | 5.0 | 1.78 |
| SK471M035ST | 470 | 0.33 | 640 | 10×21 | 5.0 | 1.98 |
| SK102M035ST | 1000 | 0.15 | 1100 | 13×21 | 5.0 | 3.46 |

Continued on next page...

| Cat. No. | Cap (µF) | Dim (mm) | | Max ESR Ohms 120Hz +25°C | Max Ripple A 120Hz 105°C | Net Price Each | |
|------------------|----------|----------|----|--------------------------------|--------------------------------|----------------|--------|
| | | D | L | | | 1-9 | 10-Up |
| 400 VDC | | | | | | | |
| 381LQ121M400H022 | 120 | 22 | 30 | 1.520 | 7.500 | \$3.53 | \$3.24 |
| 381LQ181M400J022 | 180 | 25 | 30 | 1.013 | 9.500 | 4.64 | 4.25 |
| 381LQ221M400J032 | 220 | 25 | 35 | 0.829 | 1.100 | 5.33 | 4.88 |
| 381LQ331M400A022 | 330 | 35 | 30 | 0.553 | 1.440 | 8.68 | 7.96 |
| 381LQ391M400K042 | 390 | 30 | 40 | 0.468 | 1.550 | 9.13 | 8.37 |
| 381LQ471M400A032 | 470 | 35 | 35 | 0.388 | 1.680 | 10.71 | 9.82 |
| 381LQ681M400A452 | 680 | 35 | 45 | 0.268 | 2.120 | 13.65 | 12.51 |
| 450 VDC | | | | | | | |
| 381LQ151M450J022 | 150 | 25 | 30 | 1.216 | 7.900 | 5.42 | 4.97 |
| 381LQ181M450K022 | 180 | 30 | 30 | 1.013 | .870 | 6.97 | 6.39 |
| 381LQ221M450K022 | 220 | 30 | 30 | 0.829 | 1.000 | 7.57 | 6.94 |
| 381LQ331M450A032 | 330 | 35 | 35 | 0.553 | 1.380 | 9.70 | 8.89 |
| 381LQ471M450A452 | 470 | 35 | 45 | 0.388 | 1.740 | 12.75 | 11.69 |



MINIATURE DIPPED, MICA CAPACITORS

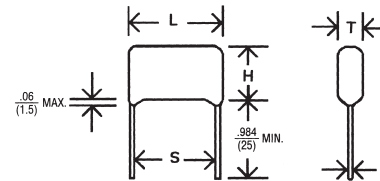
CDE miniature dipped silvered mica capacitors fit those tight spots in modules and high-density electronics. In low and moderate humidity applications, these small sizes deliver the same stability and rugged performance as the standard dipped units. **FEATURES:** Available in voltages from 50 to 500VDC. Available in capacitance from 5pF to 13000pF MIL-C-5 military style available. **SPECIFICATIONS:** Operating temperature: -55°C to 125°C. Tolerance: (C) ±1.0pF, (D) ±0.5pF, (E) ±0.5%, (F) ±1.0%, (G) ±2.0%, (J) ±5.0%.

| Cat. No. | Cap (pF) | Dimensions (mm) | | | | Tol | Net Price Each | |
|----------------|----------|-----------------|-----|-----|-----|------|----------------|--------|
| | | L | H | T | S | | 1-9 | 10-Up |
| 300 VDC | | | | | | | | |
| CD5CC010D03 | 1pF | 6.9 | 4.8 | 2.8 | 3 | ±5pF | \$1.73 | \$1.38 |
| CD5CC020D03 | 2pF | 6.9 | 4.8 | 2.8 | 3 | ±5pF | 1.73 | 1.38 |
| CD5CC050D03 | 5pF | 6.9 | 4.8 | 2.8 | 3 | ±5pF | 1.73 | 1.38 |
| CD5CC100J03 | 10pF | 6.9 | 4.8 | 2.8 | 3 | ±5% | 1.23 | .98 |
| CD5CC150J03 | 15pF | 6.9 | 4.8 | 3.0 | 3 | ±5% | 1.29 | 1.03 |
| CD5EC200J03 | 20pF | 6.9 | 5.1 | 3.0 | 3 | ±5% | 1.31 | 1.05 |
| CD5EC220J03 | 22pF | 6.9 | 5.1 | 3.0 | 3 | ±5% | 1.37 | 1.09 |
| CD5EC270J03 | 27pF | 6.9 | 5.1 | 3.3 | 3 | ±5% | 1.39 | 1.11 |
| CD5EC300J03 | 30pF | 6.9 | 5.1 | 3.3 | 3 | ±5% | 1.47 | 1.18 |
| CD5EC330J03 | 33pF | 6.9 | 5.1 | 3.3 | 3 | ±5% | 1.51 | 1.21 |
| CD5EC470J03 | 47pF | 6.9 | 5.3 | 3.6 | 3 | ±5% | 1.69 | 1.35 |
| CD5EC750J03 | 75pF | 6.9 | 5.8 | 4.1 | 3 | ±5% | 2.14 | 1.71 |
| CD5FC101J03 | 100pF | 6.9 | 6.1 | 4.6 | 3 | ±5% | 2.50 | 2.00 |
| 500 VDC | | | | | | | | |
| CD15CD050D03 | 5pF | 9.1 | 8.4 | 4.3 | 5.9 | ±5pF | .69 | .55 |
| CD10CD050D03 | 5pF | 9.1 | 8.4 | 4.8 | 3.6 | ±5pF | 1.30 | 1.04 |
| CD15CD100J03 | 10pF | 11.4 | 9.1 | 4.3 | 5.9 | ±5% | .69 | .55 |
| CD10CD100J03 | 10pF | 9.1 | 8.4 | 4.8 | 3.6 | ±5% | 1.30 | 1.04 |
| CD15CD150J03 | 15pF | 11.4 | 9.1 | 4.3 | 5.9 | ±5% | .66 | .53 |
| CD10CD150J03 | 15pF | 9.1 | 8.4 | 4.8 | 3.6 | ±5% | 1.30 | 1.04 |
| CD15ED200J03 | 20pF | 11.4 | 9.1 | 4.3 | 5.9 | ±5% | .66 | .53 |
| CD10ED200J03 | 20pF | 9.4 | 8.6 | 4.8 | 3.6 | ±5% | .97 | .78 |
| CD15ED220J03 | 22pF | 11.4 | 9.1 | 4.3 | 5.9 | ±5% | .69 | .55 |
| CD10ED220J03 | 22pF | 9.4 | 8.6 | 4.8 | 3.6 | ±5% | .97 | .78 |
| CD15ED270J03 | 27pF | 11.4 | 9.1 | 4.3 | 5.9 | ±5% | .69 | .55 |
| CD10ED270J03 | 27pF | 9.4 | 8.6 | 4.8 | 3.6 | ±5% | .97 | .78 |
| CD15ED300J03 | 30pF | 11.4 | 9.1 | 4.3 | 5.9 | ±5% | .69 | .55 |
| CD10ED300J03 | 30pF | 9.4 | 8.6 | 4.8 | 3.6 | ±5% | .97 | .78 |
| CD15ED330J03 | 33pF | 11.4 | 9.1 | 4.3 | 5.9 | ±5% | .69 | .55 |

NOTE: Add Suffix "F" to Cat. No. for RoHS compliant.

| Cat. No. | Cap (pF) | Dimensions (mm) | | | | Tol | Net Price Each | |
|----------------------------|----------|-----------------|------|-----|------|-----|----------------|--------|
| | | L | H | T | S | | 1-9 | 10-Up |
| 500 VDC (CONTINUED) | | | | | | | | |
| CD10ED330J03 | 33pF | 9.4 | 8.6 | 4.8 | 3.6 | ±5% | \$.97 | \$.78 |
| CD15ED470J03 | 47pF | 11.4 | 9.1 | 4.3 | 5.9 | ±5% | .68 | .54 |
| CD10ED470J03 | 47pF | 9.4 | 8.6 | 4.8 | 3.6 | ±5% | 1.15 | .92 |
| CD15ED510J03 | 51pF | 11.4 | 9.1 | 4.8 | 5.9 | ±5% | .68 | .54 |
| CD15ED560J03 | 56pF | 11.4 | 9.1 | 4.3 | 5.9 | ±5% | .68 | .54 |
| CD10ED560J03 | 56pF | 9.4 | 8.6 | 4.8 | 3.6 | ±5% | 1.15 | .92 |
| CD15ED680J03 | 68pF | 11.4 | 9.1 | 4.6 | 5.9 | ±5% | .70 | .56 |
| CD10ED680J03 | 68pF | 9.4 | 8.6 | 4.8 | 3.6 | ±5% | 1.15 | .92 |
| CD15FD101J03 | 100pF | 11.7 | 9.1 | 4.6 | 5.9 | ±5% | .70 | .56 |
| CD10FD101J03 | 100pF | 9.4 | 8.9 | 5.1 | 3.6 | ±5% | 1.20 | .96 |
| CD15FD121J03 | 120pF | 11.7 | 9.4 | 4.6 | 5.9 | ±5% | .77 | .61 |
| CD10FD121J03 | 120pF | 9.7 | 8.9 | 5.1 | 3.6 | ±5% | 1.20 | .96 |
| CD15FD151J03 | 150pF | 11.7 | 9.4 | 4.8 | 5.9 | ±5% | .80 | .64 |
| CD10FD151J03 | 150pF | 9.7 | 9.1 | 5.3 | 3.6 | ±5% | 1.23 | .99 |
| CD15FD181J03 | 180pF | 11.7 | 9.4 | 5.3 | 5.9 | ±5% | .92 | .74 |
| CD15FD201J03 | 200pF | 11.7 | 9.7 | 4.8 | 5.9 | ±5% | .92 | .74 |
| CD15FD221J03 | 220pF | 11.7 | 9.7 | 5.1 | 5.9 | ±5% | .97 | .77 |
| CD15FD241J03 | 240pF | 11.7 | 9.7 | 5.1 | 5.9 | ±5% | 1.03 | .83 |
| CD15FD271J03 | 270pF | 11.9 | 9.9 | 5.3 | 5.9 | ±5% | 1.12 | .90 |
| CD15FD301J03 | 300pF | 11.9 | 9.9 | 5.3 | 5.9 | ±5% | 1.20 | .96 |
| CD15FD331J03 | 330pF | 11.9 | 9.9 | 5.3 | 5.9 | ±5% | 1.31 | 1.05 |
| CD15FD391J03 | 390pF | 11.9 | 9.9 | 5.3 | 5.9 | ±5% | 1.43 | 1.14 |
| CD15FD471J03 | 470pF | 11.9 | 10.2 | 5.6 | 5.9 | ±5% | 1.66 | 1.33 |
| CD19FD471J03 | 470pF | 16.3 | 13 | 5.1 | 8.7 | ±5% | 1.51 | 1.21 |
| CD15FD501J03 | 500pF | 11.7 | 9.1 | 5.6 | 5.9 | ±5% | 1.68 | 1.35 |
| CD15FD511J03 | 510pF | 11.7 | 9.1 | 5.6 | 5.9 | ±5% | 1.76 | 1.41 |
| CD19FD681J03 | 680pF | 16.8 | 13.2 | 5.3 | 8.7 | ±5% | 1.77 | 1.42 |
| CD19FD821J03 | 820pF | 16.5 | 13.0 | 5.3 | 8.7 | ±5% | 1.76 | 1.41 |
| CD19FD102J03 | 1000pF | 16.5 | 13.2 | 5.6 | 8.7 | ±5% | 1.88 | 1.50 |
| CD19FD122J03 | 1200pF | 16.8 | 13.2 | 5.6 | 8.7 | ±5% | 2.12 | 1.70 |
| CD19FD152J03 | 1500pF | 16.8 | 13.2 | 5.8 | 8.7 | ±5% | 2.43 | 1.95 |
| CD19FD202J03 | 2000pF | 17.0 | 13.5 | 6.1 | 8.7 | ±5% | 3.10 | 2.48 |
| CD19FD222J03 | 2200pF | 17.0 | 13.5 | 6.4 | 8.7 | ±5% | 3.11 | 2.49 |
| CD19FD272J03 | 2700pF | 17.3 | 13.7 | 6.9 | 8.7 | ±5% | 3.36 | 2.69 |
| CD19FD332J03 | 3300pF | 17.3 | 14.0 | 7.4 | 8.7 | ±5% | 3.89 | 3.11 |
| CD19FD392J03 | 3900pF | 17.5 | 14.2 | 7.9 | 8.7 | ±5% | 4.62 | 3.70 |
| CD19FD472J03 | 4700pF | 17.8 | 14.7 | 8.9 | 8.7 | ±5% | 5.18 | 4.14 |
| CD30FD103J03 | .01µF | 20.3 | 22.6 | 8.6 | 11.1 | ±5% | 17.02 | 13.62 |

NOTE: Add Suffix "F" to Cat. No. for RoHS compliant.



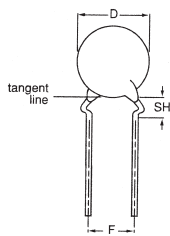
TYPE DME, POLYESTER FILM CAPACITORS

The Type DME radial-leaded, mini-dipped capacitors deliver virtually the performance of other capacitors which have cases that are twice as big. Type DME self heals shorts caused by overvoltage transients. For small size and low cost Type DME is tops. **SPECIFICATIONS:** Voltage range: 100-1000 VDC (65-250 VAC). Capacitance range: .01-10 µF. Capacitance tolerance: ±10%. Operating temperature range: -55°C to 125°C. —Full-rated voltage at 85°C—Derate linearly to 50%-rated voltage at 125°C.

| Cat. No. | Cap (µF) | Dimensions (mm) | | | | 1-9 | 10-24 | 25-Up |
|-------------------------|----------|-----------------|------|------|------|--------|--------|--------|
| | | T | H | L | S | | | |
| 100 VDC (65 VAC) | | | | | | | | |
| DME1P68K | 0.68 | 6.0 | 11.9 | 12.5 | 10.0 | \$.62 | \$.50 | \$.46 |
| DME1W1K | 1 | 7.0 | 14.0 | 12.5 | 10.0 | .71 | .57 | .53 |
| DME1W2P2K | 2.2 | 7.5 | 15.5 | 18.5 | 15.0 | 1.17 | .93 | .86 |
| DME1W3P3K | 3.3 | 9.0 | 16.5 | 18.5 | 15.0 | 1.74 | 1.39 | 1.28 |
| DME1W4P7K | 4.7 | 8.0 | 17.0 | 26.0 | 22.5 | 2.22 | 1.78 | 1.65 |
| DME1W10K | 10 | 11.5 | 21.0 | 26.0 | 22.5 | 4.01 | 3.21 | 2.97 |

NOTE: Add Suffix "F" to Cat. No. for RoHS compliant.

Continued on next page....

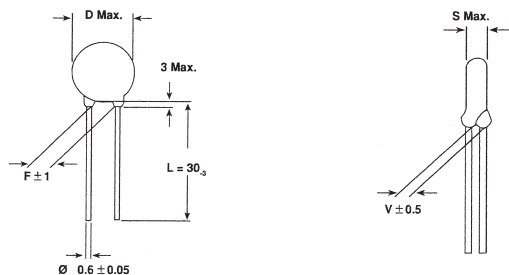


BC COMPONENTS SAFETY CERAMIC DISC CAPACITORS

SPECIFICATIONS: Disc radial leads. Climatic category: 25/125/56 or 25/85/21. Operating temperature: -30 to +125°C. Capacitance tolerance: 10%, 20%. Approvals: ENEC, UL, CSA.

| Cat. No. | Cap. (pF) | Tol. | Dimensions mm (Max.) | | | Net Price* |
|-----------------------------------|-----------|----------|----------------------|-----|-----|------------|
| | | | D | SH | F | |
| X1/Y1 440/250VAC DP SERIES | | | | | | |
| S101K33Y5PQ63V0R | 100 | ±10% | 8.5 | 4.0 | 10 | \$115.22 |
| S221K33Y5PQ63V0R | 220 | ±10% | 8.5 | 4.0 | 10 | 115.22 |
| S471K33Y5PQ63V0R | 470 | ±10% | 8.5 | 4.0 | 10 | 115.22 |
| S102M33Y5UQ63V0R | 1000 | ±20% | 8.5 | 4.0 | 10 | 214.36 |
| S222M43Y5UQ63V0R | 2200 | ±20% | 11.0 | 4.0 | 10 | 246.53 |
| S472M63Y5UQ83V0R | 4700 | ±20% | 16.0 | 4.0 | 10 | 451.53 |
| X1/X2 440/250VAC DN SERIES | | | | | | |
| S100K25U2MS63K7R | 10 | ±10% | 5.6 | 4.0 | 5.0 | 90.53 |
| S220K25U2MS63K7R | 22 | ±10% | 6.5 | 4.0 | 5.0 | 90.53 |
| S470K29U2MS63K7R | 47 | ±10% | 7.5 | 4.0 | 5.0 | 97.64 |
| S101M33Y5PS63K7R | 100 | ±20% | 8.5 | 4.0 | 7.5 | 160.86 |
| S221M33Y5PS63K7R | 220 | ±20% | 8.5 | 4.0 | 7.5 | 160.86 |
| S471M33Y5PS63K7R | 470 | ±20% | 8.5 | 4.0 | 7.5 | 160.86 |
| S102M43Y5PS63K7R | 1000 | ±20% | 11.0 | 4.0 | 7.5 | 164.60 |
| S102M29Y5US63K7R | 1000 | ±20% | 7.5 | 4.0 | 7.5 | 107.37 |
| S222M39Y5US63K7R | 2200 | ±20% | 10.0 | 4.0 | 7.5 | 147.02 |
| S472M53Y5US63K7R | 4700 | ±20% | 13.5 | 4.0 | 7.5 | 229.69 |
| S103263Y5VS83K7R | 10000 | +80/-20% | 16.0 | 4.0 | 7.5 | 335.19 |

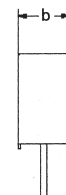
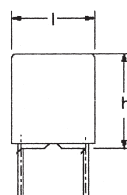
*Net Price per 1000.



DRALORIC SAFETY CERAMIC DISC CAPACITORS

SPECIFICATIONS: Disc radial leads. Climatic category: 40/125/21. Operating temperature: -40 to +125°C. Capacitance tolerance: 20%. Coating: epoxy dipped, flame retardant UL-Class 94 V-0. Approvals: ENEC, UL, CSA.

| Cat. No. | Cap. (pF) | Tol. | Dimensions mm (Max.) | | | Net Price Per 100 |
|------------------------------------|-----------|------|----------------------|-----|------|-------------------|
| | | | D | S | F | |
| WYO X1/Y2 440/274VAC SERIES | | | | | | |
| WYO102MCMBF0KR | 1000 | ±20% | 6.5 | 4.5 | 5.0 | \$5.42 |
| WYO222MCMBF0KR | 2200 | ±20% | 9.0 | 4.5 | 5.0 | 12.00 |
| WYO472MCMBF0KR | 4700 | ±20% | 12.0 | 4.5 | 7.5 | 13.20 |
| WYO103MCMCF0KR | 10000 | ±20% | 21.0 | 4.5 | 7.5 | 34.23 |
| WKO X1/Y2 440/300VAC SERIES | | | | | | |
| WKO101MPCPF0KR | 100 | ±20% | 7.0 | 4.5 | 7.5 | 8.99 |
| WKO471MPCPF0KR | 470 | ±20% | 7.0 | 4.5 | 7.5 | 8.99 |
| WKO102MPCPF0KR | 1000 | ±20% | 9.0 | 5.0 | 7.5 | 14.42 |
| WKO222MPCPF0KR | 2200 | ±20% | 12.0 | 5.0 | 7.5 | 16.10 |
| WKO472MPCPF0KR | 4700 | ±20% | 14.5 | 5.0 | 12.5 | 28.25 |
| WKP X1/Y1 760/500VAC SERIES | | | | | | |
| WKP471MCPEF0KR | 470 | ±20% | 8.0 | 6.0 | 12.5 | 14.22 |
| WKP102MCPEJ0KR | 1000 | ±20% | 10.0 | 6.0 | 12.5 | 17.76 |
| WKP222MCPEJ0KR | 2200 | ±20% | 13.0 | 6.0 | 12.5 | 26.21 |
| WKP472MCPEJ0KR | 4700 | ±20% | 18.0 | 6.0 | 12.5 | 46.97 |



BC COMPONENTS 370, 371, 372, AND 373 SERIES METALLIZED POLYESTER FILM CAPACITORS

FEATURES: Low-inductive wound cell of metalized polyethyleneerephthalate (PETP) film potted in a flame-retardant case. Typical application is for blocking and decoupling, bypass, and use as energy reservoir. **SPECIFICATIONS:** Potted type radial leads. Climatic category: 55/105/56. Rated temperature: 85°C. Maximum application temperature: 105°C. Capacitance tolerance: ±10%. Encapsulation: plastic case, epoxy resin sealed, flame retardant UL-Class 94 V-0. Performance grade: grade 1 (long life).

| Cat. No. | VDC | Cap (µF) | Dimensions (mm) | | | Net Price Per 100 |
|----------------|-----|----------|-----------------|------|------|-------------------|
| | | | B | H | L | |
| 2222 370 11104 | 63 | 0.1 | 2.5 | 6.5 | 7.2 | \$15.96 |
| 2222 370 11154 | 63 | 0.15 | 3.5 | 8.0 | 7.2 | 21.44 |
| 2222 370 11224 | 63 | 0.22 | 3.5 | 8.0 | 7.2 | 26.17 |
| 2222 370 11334 | 63 | 0.33 | 4.5 | 9.0 | 7.2 | 33.25 |
| 2222 370 11474 | 63 | 0.47 | 5.0 | 10.0 | 7.2 | 42.25 |
| 2222 370 11684 | 63 | 0.68 | 6.0 | 11.0 | 7.2 | 57.12 |
| 2222 370 11105 | 63 | 1.0 | 6.0 | 11.0 | 7.2 | 66.12 |
| 2222 371 11105 | 63 | 1.0 | 5.0 | 10.5 | 7.62 | 75.90 |
| 2222 370 21153 | 100 | 0.015 | 2.5 | 6.5 | 7.2 | 15.45 |
| 2222 370 21223 | 100 | 0.022 | 2.5 | 6.5 | 7.2 | 16.04 |
| 2222 370 21333 | 100 | 0.033 | 2.5 | 7.5 | 7.2 | 16.63 |
| 2222 370 21473 | 100 | 0.047 | 3.5 | 8.0 | 7.2 | 17.21 |
| 2222 370 21683 | 100 | 0.068 | 3.5 | 8.0 | 7.2 | 22.30 |
| 2222 370 21104 | 100 | 0.1 | 3.5 | 8.0 | 7.2 | 25.27 |
| 2222 371 21104 | 100 | 0.1 | 3.0 | 8.0 | 7.62 | 27.15 |
| 2222 372 21104 | 100 | 0.1 | 4.0 | 9.0 | 12.5 | 32.98 |
| 2222 372 21224 | 100 | 0.22 | 4.0 | 9.0 | 12.5 | 37.52 |
| 2222 372 21474 | 100 | 0.47 | 5.0 | 11.0 | 12.5 | 51.25 |
| 2222 373 21105 | 100 | 1.0 | 6.0 | 12.0 | 17.5 | 74.72 |
| 2222 373 21225 | 100 | 2.2 | 8.5 | 15.0 | 17.5 | 140.45 |
| 2222 373 21335 | 100 | 3.3 | 8.5 | 18.0 | 26.0 | 203.04 |
| 2222 373 21475 | 100 | 4.7 | 10.0 | 19.5 | 26.0 | 262.11 |
| 2222 373 21685 | 100 | 6.8 | 11.0 | 21.0 | 31.0 | 369.70 |
| 2222 373 21106 | 100 | 10.0 | 10.0 | 19.5 | 26.0 | 532.05 |
| 2222 370 41472 | 250 | 0.0047 | 2.5 | 6.5 | 7.2 | 14.87 |
| 2222 370 41682 | 250 | 0.0068 | 2.5 | 6.5 | 7.2 | 14.87 |
| 2222 370 41103 | 250 | 0.01 | 2.5 | 6.5 | 7.2 | 15.18 |
| 2222 370 41104 | 250 | 0.01 | 6.0 | 11.0 | 7.2 | 33.53 |
| 2222 370 41223 | 250 | 0.022 | 3.5 | 8.0 | 7.2 | 17.84 |
| 2222 372 41473 | 250 | 0.047 | 4.0 | 9.0 | 12.5 | 31.53 |
| 2222 372 41104 | 250 | 0.1 | 4.0 | 10.0 | 12.5 | 32.98 |
| 2222 373 43225 | 250 | 2.2 | 10.0 | 19.5 | 26.0 | 161.57 |
| 2222 370 51102 | 400 | 0.001 | 2.5 | 6.5 | 7.2 | 14.87 |
| 2222 370 51222 | 400 | 0.0022 | 2.5 | 6.5 | 7.2 | 14.87 |
| 2222 370 51103 | 400 | 0.01 | 3.5 | 8.0 | 7.2 | 16.63 |
| 2222 372 51103 | 400 | 0.01 | 4.0 | 9.0 | 12.5 | 31.26 |
| 2222 372 51223 | 400 | 0.022 | 4.0 | 9.0 | 12.5 | 31.26 |
| 2222 372 51333 | 400 | 0.033 | 4.0 | 10.0 | 12.5 | 31.26 |
| 2222 372 51473 | 400 | 0.047 | 5.0 | 11.0 | 12.5 | 31.53 |
| 2222 373 53473 | 400 | 0.047 | 5.0 | 11.0 | 17.5 | 34.82 |
| 2222 373 53104 | 400 | 0.1 | 5.0 | 11.0 | 17.5 | 41.47 |
| 2222 373 53224 | 400 | 0.22 | 6.0 | 12.0 | 17.5 | 59.82 |
| 2222 373 53105 | 400 | 1.0 | 10.0 | 19.5 | 26.0 | 142.01 |



Part's indicated with a leaf are considered RoHS July 2006 compliant based on the manufacturer's confirmation at the time of publishing. For additional information please contact Electro Sonic.