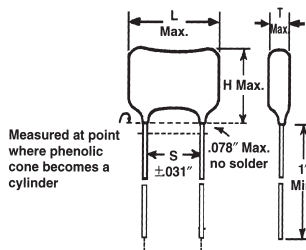


Cat. No.	Cap (µF)	Dim (mm)		Max ESR Ohms 120Hz +25°C	Max Ripple A 120Hz 105°C	Net Price Each	
		D	L			1-9	10-Up
<b>400 VDC</b>							
381LQ121M400H022	120	22	30	1.520	7.500	<b>\$3.53</b>	<b>\$3.24</b>
381LQ181M400J022	180	25	30	1.013	9.500	<b>4.64</b>	<b>4.25</b>
381LQ221M400J032	220	25	35	0.829	1.100	<b>5.33</b>	<b>4.88</b>
381LQ331M400A022	330	35	30	0.553	1.440	<b>8.68</b>	<b>7.96</b>
381LQ391M400K042	390	30	40	0.468	1.550	<b>9.13</b>	<b>8.37</b>
381LQ471M400A032	470	35	35	0.388	1.680	<b>10.71</b>	<b>9.82</b>
381LQ681M400A452	680	35	45	0.268	2.120	<b>13.65</b>	<b>12.51</b>
<b>450 VDC</b>							
381LQ151M450J022	150	25	30	1.216	7.900	<b>5.42</b>	<b>4.97</b>
381LQ181M450K022	180	30	30	1.013	.870	<b>6.97</b>	<b>6.39</b>
381LQ221M450K022	220	30	30	0.829	1.000	<b>7.57</b>	<b>6.94</b>
381LQ331M450A032	330	35	35	0.553	1.380	<b>9.70</b>	<b>8.89</b>
381LQ471M450A452	470	35	45	0.388	1.740	<b>12.75</b>	<b>11.69</b>



### MINIATURE DIPPED, MICA CAPACITORS

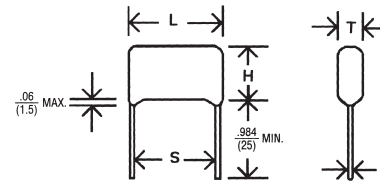
CDE miniature dipped silvered mica capacitors fit those tight spots in modules and high-density electronics. In low and moderate humidity applications, these small sizes deliver the same stability and rugged performance as the standard dipped units. **FEATURES:** Available in voltages from 50 to 500VDC. Available in capacitance from 5pF to 13000pF MIL-C-5 military style available. **SPECIFICATIONS:** Operating temperature: -55°C to 125°C. Tolerance: (C) ±1.0pF, (D) ±0.5pF, (E) ±0.5%, (F) ±1.0%, (G) ±2.0%, (J) ±5.0%.

Cat. No.	Cap (pF)	Dimensions (mm)				Tol	Net Price Each	
		L	H	T	S		1-9	10-Up
<b>300 VDC</b>								
CD5CC010D03	1pF	6.9	4.8	2.8	3	±5pF	<b>\$1.73</b>	<b>\$1.38</b>
CD5CC020D03	2pF	6.9	4.8	2.8	3	±5pF	<b>1.73</b>	<b>1.38</b>
CD5CC050D03	5pF	6.9	4.8	2.8	3	±5pF	<b>1.73</b>	<b>1.38</b>
CD5CC100J03	10pF	6.9	4.8	2.8	3	±5%	<b>1.23</b>	<b>.98</b>
CD5CC150J03	15pF	6.9	4.8	3.0	3	±5%	<b>1.29</b>	<b>1.03</b>
CD5EC200J03	20pF	6.9	5.1	3.0	3	±5%	<b>1.31</b>	<b>1.05</b>
CD5EC220J03	22pF	6.9	5.1	3.0	3	±5%	<b>1.37</b>	<b>1.09</b>
CD5EC270J03	27pF	6.9	5.1	3.3	3	±5%	<b>1.39</b>	<b>1.11</b>
CD5EC300J03	30pF	6.9	5.1	3.3	3	±5%	<b>1.47</b>	<b>1.18</b>
CD5EC330J03	33pF	6.9	5.1	3.3	3	±5%	<b>1.51</b>	<b>1.21</b>
CD5EC470J03	47pF	6.9	5.3	3.6	3	±5%	<b>1.69</b>	<b>1.35</b>
CD5EC750J03	75pF	6.9	5.8	4.1	3	±5%	<b>2.14</b>	<b>1.71</b>
CD5FC101J03	100pF	6.9	6.1	4.6	3	±5%	<b>2.50</b>	<b>2.00</b>
<b>500 VDC</b>								
CD15CD050D03	5pF	9.1	8.4	4.3	5.9	±5pF	<b>.69</b>	<b>.55</b>
CD10CD050D03	5pF	9.1	8.4	4.8	3.6	±5pF	<b>1.30</b>	<b>1.04</b>
CD15CD100J03	10pF	11.4	9.1	4.3	5.9	±5%	<b>.69</b>	<b>.55</b>
CD10CD100J03	10pF	9.1	8.4	4.8	3.6	±5%	<b>1.30</b>	<b>1.04</b>
CD15CD150J03	15pF	11.4	9.1	4.3	5.9	±5%	<b>.66</b>	<b>.53</b>
CD10CD150J03	15pF	9.1	8.4	4.8	3.6	±5%	<b>1.30</b>	<b>1.04</b>
CD15ED200J03	20pF	11.4	9.1	4.3	5.9	±5%	<b>.66</b>	<b>.53</b>
CD10ED200J03	20pF	9.4	8.6	4.8	3.6	±5%	<b>.97</b>	<b>.78</b>
CD15ED220J03	22pF	11.4	9.1	4.3	5.9	±5%	<b>.69</b>	<b>.55</b>
CD10ED220J03	22pF	9.4	8.6	4.8	3.6	±5%	<b>.97</b>	<b>.78</b>
CD15ED270J03	27pF	11.4	9.1	4.3	5.9	±5%	<b>.69</b>	<b>.55</b>
CD10ED270J03	27pF	9.4	8.6	4.8	3.6	±5%	<b>.97</b>	<b>.78</b>
CD15ED300J03	30pF	11.4	9.1	4.3	5.9	±5%	<b>.69</b>	<b>.55</b>
CD10ED300J03	30pF	9.4	8.6	4.8	3.6	±5%	<b>.97</b>	<b>.78</b>
CD15ED330J03	33pF	11.4	9.1	4.3	5.9	±5%	<b>.69</b>	<b>.55</b>

NOTE: Add Suffix "F" to Cat. No. for RoHS compliant.

Cat. No.	Cap (pF)	Dimensions (mm)				Tol	Net Price Each	
		L	H	T	S		1-9	10-Up
<b>500 VDC (CONTINUED)</b>								
CD10ED330J03	33pF	9.4	8.6	4.8	3.6	±5%	<b>\$.97</b>	<b>\$.78</b>
CD15ED470J03	47pF	11.4	9.1	4.3	5.9	±5%	<b>.68</b>	<b>.54</b>
CD10ED470J03	47pF	9.4	8.6	4.8	3.6	±5%	<b>1.15</b>	<b>.92</b>
CD15ED510J03	51pF	11.4	9.1	4.8	5.9	±5%	<b>.68</b>	<b>.54</b>
CD15ED560J03	56pF	11.4	9.1	4.3	5.9	±5%	<b>.68</b>	<b>.54</b>
CD10ED560J03	56pF	9.4	8.6	4.8	3.6	±5%	<b>1.15</b>	<b>.92</b>
CD15ED680J03	68pF	11.4	9.1	4.6	5.9	±5%	<b>.70</b>	<b>.56</b>
CD10ED680J03	68pF	9.4	8.6	4.8	3.6	±5%	<b>1.15</b>	<b>.92</b>
CD15FD101J03	100pF	11.7	9.1	4.6	5.9	±5%	<b>.70</b>	<b>.56</b>
CD10FD101J03	100pF	9.4	8.9	5.1	3.6	±5%	<b>1.20</b>	<b>.96</b>
CD15FD121J03	120pF	11.7	9.4	4.6	5.9	±5%	<b>.77</b>	<b>.61</b>
CD10FD121J03	120pF	9.7	8.9	5.1	3.6	±5%	<b>1.20</b>	<b>.96</b>
CD15FD151J03	150pF	11.7	9.4	4.8	5.9	±5%	<b>.80</b>	<b>.64</b>
CD10FD151J03	150pF	9.7	9.1	5.3	3.6	±5%	<b>1.23</b>	<b>.99</b>
CD15FD181J03	180pF	11.7	9.4	5.3	5.9	±5%	<b>.92</b>	<b>.74</b>
CD15FD201J03	200pF	11.7	9.7	4.8	5.9	±5%	<b>.92</b>	<b>.74</b>
CD15FD221J03	220pF	11.7	9.7	5.1	5.9	±5%	<b>.97</b>	<b>.77</b>
CD15FD241J03	240pF	11.7	9.7	5.1	5.9	±5%	<b>1.03</b>	<b>.83</b>
CD15FD271J03	270pF	11.9	9.9	5.3	5.9	±5%	<b>1.12</b>	<b>.90</b>
CD15FD301J03	300pF	11.9	9.9	5.3	5.9	±5%	<b>1.20</b>	<b>.96</b>
CD15FD331J03	330pF	11.9	9.9	5.3	5.9	±5%	<b>1.31</b>	<b>1.05</b>
CD15FD391J03	390pF	11.9	9.9	5.3	5.9	±5%	<b>1.43</b>	<b>1.14</b>
CD15FD471J03	470pF	11.9	10.2	5.6	5.9	±5%	<b>1.66</b>	<b>1.33</b>
CD19FD471J03	470pF	16.3	13	5.1	8.7	±5%	<b>1.51</b>	<b>1.21</b>
CD15FD501J03	500pF	11.7	9.1	5.6	5.9	±5%	<b>1.68</b>	<b>1.35</b>
CD15FD511J03	510pF	11.7	9.1	5.6	5.9	±5%	<b>1.76</b>	<b>1.41</b>
CD19FD681J03	680pF	16.8	13.2	5.3	8.7	±5%	<b>1.77</b>	<b>1.42</b>
CD19FD821J03	820pF	16.5	13.0	5.3	8.7	±5%	<b>1.76</b>	<b>1.41</b>
CD19FD102J03	1000pF	16.5	13.2	5.6	8.7	±5%	<b>1.88</b>	<b>1.50</b>
CD19FD122J03	1200pF	16.8	13.2	5.6	8.7	±5%	<b>2.12</b>	<b>1.70</b>
CD19FD152J03	1500pF	16.8	13.2	5.8	8.7	±5%	<b>2.43</b>	<b>1.95</b>
CD19FD202J03	2000pF	17.0	13.5	6.1	8.7	±5%	<b>3.10</b>	<b>2.48</b>
CD19FD222J03	2200pF	17.0	13.5	6.4	8.7	±5%	<b>3.11</b>	<b>2.49</b>
CD19FD272J03	2700pF	17.3	13.7	6.9	8.7	±5%	<b>3.36</b>	<b>2.69</b>
CD19FD332J03	3300pF	17.3	14.0	7.4	8.7	±5%	<b>3.89</b>	<b>3.11</b>
CD19FD392J03	3900pF	17.5	14.2	7.9	8.7	±5%	<b>4.62</b>	<b>3.70</b>
CD19FD472J03	4700pF	17.8	14.7	8.9	8.7	±5%	<b>5.18</b>	<b>4.14</b>
CD30FD103J03	.01µF	20.3	22.6	8.6	11.1	±5%	<b>17.02</b>	<b>13.62</b>

NOTE: Add Suffix "F" to Cat. No. for RoHS compliant.



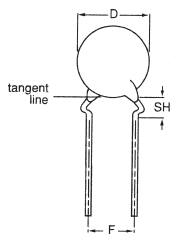
### TYPE DME, POLYESTER FILM CAPACITORS

The Type DME radial-leaded, mini-dipped capacitors deliver virtually the performance of other capacitors which have cases that are twice as big. Type DME self heals shorts caused by overvoltage transients. For small size and low cost Type DME is tops. **SPECIFICATIONS:** Voltage range: 100-1000 VDC (65-250 VAC). Capacitance range: .01-10 µF. Capacitance tolerance: ±10%. Operating temperature range: -55°C to 125°C. —Full-rated voltage at 85°C—Derate linearly to 50%-rated voltage at 125°C.

Cat. No.	Cap (µF)	Dimensions (mm)				1-9	10-24	25-Up
		T	H	L	S			
<b>100 VDC (65 VAC)</b>								
DME1P68K	0.68	6.0	11.9	12.5	10.0	<b>\$.62</b>	<b>\$.50</b>	<b>\$.46</b>
DME1W1K	1	7.0	14.0	12.5	10.0	<b>.71</b>	<b>.57</b>	<b>.53</b>
DME1W2P2K	2.2	7.5	15.5	18.5	15.0	<b>1.17</b>	<b>.93</b>	<b>.86</b>
DME1W3P3K	3.3	9.0	16.5	18.5	15.0	<b>1.74</b>	<b>1.39</b>	<b>1.28</b>
DME1W4P7K	4.7	8.0	17.0	26.0	22.5	<b>2.22</b>	<b>1.78</b>	<b>1.65</b>
DME1W10K	10	11.5	21.0	26.0	22.5	<b>4.01</b>	<b>3.21</b>	<b>2.97</b>

NOTE: Add Suffix "F" to Cat. No. for RoHS compliant.

Continued on next page....

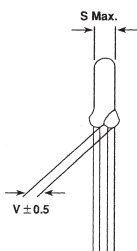
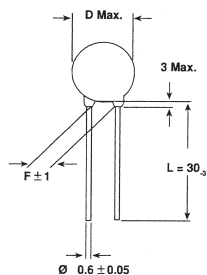


## BC COMPONENTS SAFETY CERAMIC DISC CAPACITORS

**SPECIFICATIONS:** Disc radial leads. Climatic category: 25/125/56 or 25/85/21. Operating temperature: -30 to +125°C. Capacitance tolerance: 10%, 20%. Approvals: ENEC, UL, CSA.

Cat. No.	Cap. (pF)	Tol.	Dimensions mm (Max.)			Net Price*
			D	SH	F	
<b>X1/Y1 440/250VAC DP SERIES</b>						
S101K33Y5PQ63V0R	100	±10%	8.5	4.0	10	\$115.22
S221K33Y5PQ63V0R	220	±10%	8.5	4.0	10	115.22
S471K33Y5PQ63V0R	470	±10%	8.5	4.0	10	115.22
S102M33Y5UQ63V0R	1000	±20%	8.5	4.0	10	214.36
S222M43Y5UQ63V0R	2200	±20%	11.0	4.0	10	246.53
S472M63Y5UQ83V0R	4700	±20%	16.0	4.0	10	451.53
<b>X1/X2 440/250VAC DN SERIES</b>						
S100K25U2MS63K7R	10	±10%	5.6	4.0	5.0	90.53
S220K25U2MS63K7R	22	±10%	6.5	4.0	5.0	90.53
S470K29U2MS63K7R	47	±10%	7.5	4.0	5.0	97.64
S101M33Y5PS63K7R	100	±20%	8.5	4.0	7.5	160.86
S221M33Y5PS63K7R	220	±20%	8.5	4.0	7.5	160.86
S471M33Y5PS63K7R	470	±20%	8.5	4.0	7.5	160.86
S102M43Y5PS63K7R	1000	±20%	11.0	4.0	7.5	164.60
S102M29Y5US63K7R	1000	±20%	7.5	4.0	7.5	107.37
S222M39Y5US63K7R	2200	±20%	10.0	4.0	7.5	147.02
S472M53Y5US63K7R	4700	±20%	13.5	4.0	7.5	229.69
S103263Y5VS83K7R	10000	+80/-20%	16.0	4.0	7.5	335.19

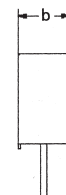
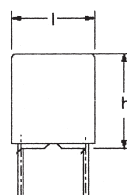
\*Net Price per 1000.



## DRALORIC SAFETY CERAMIC DISC CAPACITORS

**SPECIFICATIONS:** Disc radial leads. Climatic category: 40/125/21. Operating temperature: -40 to +125°C. Capacitance tolerance: 20%. Coating: epoxy dipped, flame retardant UL-Class 94 V-0. Approvals: ENEC, UL, CSA.

Cat. No.	Cap. (pF)	Tol.	Dimensions mm (Max.)			Net Price Per 100
			D	S	F	
<b>WYO X1/Y2 440/274VAC SERIES</b>						
WYO102MCMBF0KR	1000	±20%	6.5	4.5	5.0	\$5.42
WYO222MCMBF0KR	2200	±20%	9.0	4.5	5.0	12.00
WYO472MCMBF0KR	4700	±20%	12.0	4.5	7.5	13.20
WYO103MCMCF0KR	10000	±20%	21.0	4.5	7.5	34.23
<b>WKO X1/Y2 440/300VAC SERIES</b>						
WKO101MPCPF0KR	100	±20%	7.0	4.5	7.5	8.99
WKO471MPCPF0KR	470	±20%	7.0	4.5	7.5	8.99
WKO102MPCPF0KR	1000	±20%	9.0	5.0	7.5	14.42
WKO222MPCPF0KR	2200	±20%	12.0	5.0	7.5	16.10
WKO472MPCPF0KR	4700	±20%	14.5	5.0	12.5	28.25
<b>WKP X1/Y1 760/500VAC SERIES</b>						
WKP471MCPEF0KR	470	±20%	8.0	6.0	12.5	14.22
WKP102MCPEJ0KR	1000	±20%	10.0	6.0	12.5	17.76
WKP222MCPEJ0KR	2200	±20%	13.0	6.0	12.5	26.21
WKP472MCPEJ0KR	4700	±20%	18.0	6.0	12.5	46.97



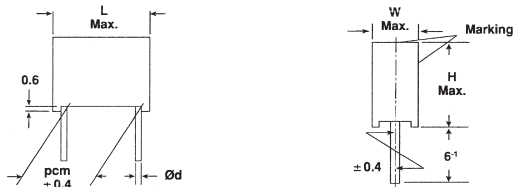
## BC COMPONENTS 370, 371, 372, AND 373 SERIES METALLIZED POLYESTER FILM CAPACITORS

**FEATURES:** Low-inductive wound cell of metallized polyethyleneerephthalate (PETP) film potted in a flame-retardant case. Typical application is for blocking and decoupling, bypass, and use as energy reservoir. **SPECIFICATIONS:** Potted type radial leads. Climatic category: 55/105/56. Rated temperature: 85°C. Maximum application temperature: 105°C. Capacitance tolerance: ±10%. Encapsulation: plastic case, epoxy resin sealed, flame retardant UL-Class 94 V-0. Performance grade: grade 1 (long life).

Cat. No.	VDC	Cap (µF)	Dimensions (mm)			Net Price Per 100
			B	H	L	
2222 370 11104	63	0.1	2.5	6.5	7.2	\$15.96
2222 370 11154	63	0.15	3.5	8.0	7.2	21.44
2222 370 11224	63	0.22	3.5	8.0	7.2	26.17
2222 370 11334	63	0.33	4.5	9.0	7.2	33.25
2222 370 11474	63	0.47	5.0	10.0	7.2	42.25
2222 370 11684	63	0.68	6.0	11.0	7.2	57.12
2222 370 11105	63	1.0	6.0	11.0	7.2	66.12
2222 371 11105	63	1.0	5.0	10.5	7.62	75.90
2222 370 21153	100	0.015	2.5	6.5	7.2	15.45
2222 370 21223	100	0.022	2.5	6.5	7.2	16.04
2222 370 21333	100	0.033	2.5	7.5	7.2	16.63
2222 370 21473	100	0.047	3.5	8.0	7.2	17.21
2222 370 21683	100	0.068	3.5	8.0	7.2	22.30
2222 370 21104	100	0.1	3.5	8.0	7.2	25.27
2222 371 21104	100	0.1	3.0	8.0	7.62	27.15
2222 372 21104	100	0.1	4.0	9.0	12.5	32.98
2222 372 21224	100	0.22	4.0	9.0	12.5	37.52
2222 372 21474	100	0.47	5.0	11.0	12.5	51.25
2222 373 21105	100	1.0	6.0	12.0	17.5	74.72
2222 373 21225	100	2.2	8.5	15.0	17.5	140.45
2222 373 21335	100	3.3	8.5	18.0	26.0	203.04
2222 373 21475	100	4.7	10.0	19.5	26.0	262.11
2222 373 21685	100	6.8	11.0	21.0	31.0	369.70
2222 373 21106	100	10.0	10.0	19.5	26.0	532.05
2222 370 41472	250	0.0047	2.5	6.5	7.2	14.87
2222 370 41682	250	0.0068	2.5	6.5	7.2	14.87
2222 370 41103	250	0.01	2.5	6.5	7.2	15.18
2222 370 41104	250	0.01	6.0	11.0	7.2	33.53
2222 370 41223	250	0.022	3.5	8.0	7.2	17.84
2222 372 41473	250	0.047	4.0	9.0	12.5	31.53
2222 372 41104	250	0.1	4.0	10.0	12.5	32.98
2222 373 43225	250	2.2	10.0	19.5	26.0	161.57
2222 370 51102	400	0.001	2.5	6.5	7.2	14.87
2222 370 51222	400	0.0022	2.5	6.5	7.2	14.87
2222 370 51103	400	0.01	3.5	8.0	7.2	16.63
2222 372 51103	400	0.01	4.0	9.0	12.5	31.26
2222 372 51223	400	0.022	4.0	9.0	12.5	31.26
2222 372 51333	400	0.033	4.0	10.0	12.5	31.26
2222 372 51473	400	0.047	5.0	11.0	12.5	31.53
2222 373 53473	400	0.047	5.0	11.0	17.5	34.82
2222 373 53104	400	0.1	5.0	11.0	17.5	41.47
2222 373 53224	400	0.22	6.0	12.0	17.5	59.82
2222 373 53105	400	1.0	10.0	19.5	26.0	142.01



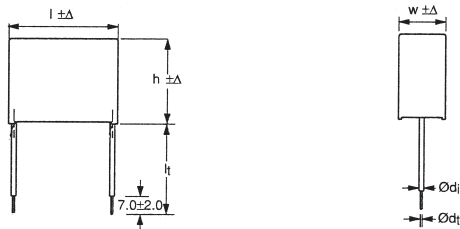
Part's indicated with a leaf are considered RoHS July 2006 compliant based on the manufacturer's confirmation at the time of publishing. For additional information please contact Electro Sonic.



## ROEDERSTEIN MKP1840 SERIES METALLIZED POLYPROPYLENE FILM CAPACITOR

**FEATURES:** Polypropylene film. Typical application in pulse operations, deflection circuits (S-connection), SMPS and thyristor circuits, storage, filter, timing, sample and hold circuits. **SPECIFICATIONS:** Potted type, radial leads. Leads: tinned wire. Climatic category: 55/100/56. Temperature range: -55 to +100°C. Capacitance tolerance: ±5%. Encapsulation: plastic moulded, flame retardant UL-Class 94 V-0.

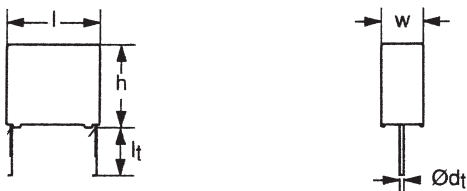
Cat. No.	VAC	Cap.	Dimensions (mm)			Net Price Per 100
			W	H	L	
⊕ MKP1840247014	100	4700pF	3.5	8.5	7.5	\$34.29
⊕ MKP1840310014	100	.01µF	3.5	8.5	7.5	36.79
⊕ MKP1840322014	100	.022µF	3.5	8.5	7.5	36.79
⊕ MKP1840347014	100	.047µF	4.5	9.5	7.5	38.34
⊕ MKP1840410014	100	0.1µF	5.5	11.5	7.5	46.76
⊕ MKP1840310254	250	.01µF	4.0	9.0	10.0	47.39
⊕ MKP1840410254	250	.01µF	6.5	11.5	13.0	68.58
⊕ MKP1840447254	250	0.47µF	8.5	17.5	18.0	141.84
⊕ MKP1840310634	630	0.01	4.5	9.5	13.0	56.74
⊕ MKP1840410634	630	0.1	8.5	17.5	18.0	108.80
⊕ MKP1840510634	630	1.0	16.5	29.5	31.5	496.60



## BC COMPONENTS 338-4 SERIES INTERFERENCE SUPPRESSION X2 FILM CAPACITORS

**FEATURES:** Low-inductive wound cell of metallized polypropylene (MKP) film potted in a flame-retardant case. Application is for electromagnetic interference suppression. **SPECIFICATIONS:** Potted type, radial leads. Climatic category: 55/105/56/B. Rated temperature: 105°C. Maximum application temperature: 105°C. Capacitance tolerance: ±20%. Encapsulation: plastic case, epoxy resin sealed, flame retardant UL-Class 94 V-0. Safety approvals: ENEC, UL1283 and CSA-C22.2 No.8.

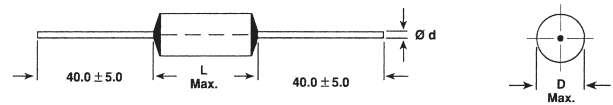
Cat. No.	VAC	Cap (µF)	Dimensions (mm)			Net Price Per 100
			W	H	L	
⊕ 2222 338 40104	275	0.1	6.0	14.0	17.5	\$52.03
⊕ 2222 338 40224	275	0.22	8.5	15.0	17.5	69.64
⊕ 2222 338 40334	275	0.33	10.0	16.5	17.5	79.42
⊕ 2222 338 40474	275	0.47	18.0	35.0	42.0	125.19
⊕ 2222 338 40105	275	1.0	12.0	22.0	26.0	210.08
⊕ 2222 338 40225	275	2.2	18.0	28.0	31.0	336.45
⊕ 2222 338 40475	275	4.7	18.0	35.0	42.0	713.19
⊕ 2222 338 40106	275	10.0	21.0	38.0	59.5	1231.94



## BC COMPONENTS 339-2 SERIES MINIATURE INTERFERENCE SUPPRESSION X2 FILM CAPACITORS

**FEATURES:** Low-inductive wound cell of metallized polypropylene (MKP) film potted in a flame-retardant case. Application is for electromagnetic interference suppression. Smallest footprint. **SPECIFICATIONS:** Potted type, radial leads. Climatic category: 55/105/56/B. Rated temperature: 105°C. Maximum application temperature: 105°C. Capacitance tolerance: ±20%. Encapsulation: plastic case, epoxy resin sealed, flame retardant UL-Class 94 V-0. Safety approvals: ENEC, UL1283, and CSA-C22.2 No.8.

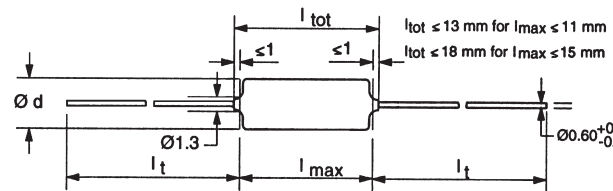
Cat. No.	VAC	Cap (µF)	Dimensions (mm)			Net Price Per 100
			W	H	L	
⊕ 2222 339 20103	275	0.01	5.0	11.0	17.5	\$41.46
⊕ 2222 339 20104	275	0.1	6.0	12.0	12.5	33.17
⊕ 2222 339 20224	275	0.22	7.0	13.5	17.5	46.70
⊕ 2222 339 20334	275	0.33	8.5	15.0	17.5	56.74
⊕ 2222 339 20474	275	0.47	10.0	16.5	17.5	70.27
⊕ 2222 339 20105	275	1.0	12.0	22.0	26.0	132.68
⊕ 2222 339 20225	275	2.2	15.0	25.0	31.0	225.21
⊕ 2222 339 20335	275	3.3	21.0	31.0	31.0	295.04
⊕ 2222 339 20475	275	4.7	21.0	31.0	31.0	398.47



## ROEDERSTEIN F1773-2000 SERIES AXIAL INTERFERENCE SUPPRESSION X2 FILM CAPACITORS

**FEATURES:** Polypropylene film in a flame-retardant case. Application is for electromagnetic interference suppression where there are height restrictions. **SPECIFICATIONS:** Axial leads. Climatic category: C < 1.0µF = 40/100/21, C > 1.0µF = 40/085/21. Rated voltage: 253VAC, 50/60Hz. Capacitance tolerance: ±10% or ±20%. Encapsulation: plastic case, epoxy resin sealed, flame retardant UL-Class 94 V-0. Safety approvals: EN 132 400, EN60068-1, IEC 60384-14/2, UL 1283.

Cat. No.	VAC	Cap (µF)	Cap Tol	Dimensions (mm)		Net Price Per 100
				D	L	
F1773410200	275	0.1	±20%	9.5	19.0	\$2.17
F1773422200	275	0.22	±10%	10.0	26.5	2.81
F1773447200	275	0.47	±10%	14.0	26.5	3.69
F1773510200	275	1.0	±10%	18.0	31.5	4.63



## BC COMPONENTS 460, 461, 462, 463, AND 464 SERIES AXIAL PRECISION POLYPROPYLENE FILM CAPACITORS

**FEATURES:** Polypropylene film foil capacitors in axial configuration. Typical applications are in circuits where close tolerance, reliability and low losses are important, such as tuned circuits, filter, and timing networks. **SPECIFICATIONS:** Axial leads. Climatic category: 40/100/56. Rated temperature: +85°C. Maximum application temperature: +100°C. Capacitance tolerance: ±1%.

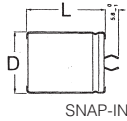
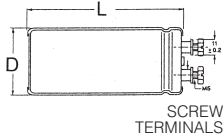
Cat. No.	VDC	Cap (µF)	Tol	Dimensions (mm)		Net Price Per 100
				D	L	
⊕ 2222 460 44703	63	.047µF	±1%	8	15	\$95.76
⊕ 2222 461 44702	160	4700pF	±1%	5	11	44.14
⊕ 2222 461 41003	160	.01µF	±1%	6	15	54.24
⊕ 2222 461 42203	160	.022µF	±1%	7	15	78.18
⊕ 2222 462 42202	250	2200pF	±1%	5	11	42.65
⊕ 2222 462 43302	250	3300pF	±1%	5	11	45.26
⊕ 2222 462 44702	250	4700pF	±1%	6	15	50.50
⊕ 2222 462 41003	250	.01µF	±1%	6.5	15	61.35
⊕ 2222 462 42203	250	.022µF	±1%	8.5	15	91.28
⊕ 2222 463 41002	400	100pF	±1%	5	11	42.27
⊕ 2222 464 41001	630	100pF	±1%	5	11	40.77
⊕ 2222 464 42201	630	220pF	±1%	5	11	40.77
⊕ 2222 464 44701	630	470pF	±1%	5	11	40.77
⊕ 2222 464 41002	630	1000pF	±1%	6	15	44.14
⊕ 2222 464 42202	630	2200pF	±1%	7	15	50.50
⊕ 2222 464 44702	630	4700pF	±1%	8.5	15	59.11

## BC COMPONENTS LONG-LIFE ELECTROLYTIC CAPACITORS

### FEATURES:

- Useful Life 2000 to 1000 hours at 105°C
- Temperature Range: -40 to +105°C
- Tolerance on Cr: +/-20%

Cat. No.	Cap (µF)	Voltage	Dimensions (mm) (D x L)	Ripple Current	Net Price
2222 138 35101	16	100	7.7 x 12.7	130	\$1.31
2222 138 35471	16	470	10 x 18	360	1.39
2222 138 15102	16	1000	10 x 30	630	1.40
2222 138 36229	25	22	6.3 x 12.7	61	1.19
2222 138 36479	25	47	7.7 x 12.7	96	1.31
2222 138 36101	25	100	6.5 x 18	160	1.03
2222 138 36221	25	220	10 x 18	270	1.39
2222 138 36471	25	470	10 x 25	440	1.68
2222 138 16102	25	1000	12.5 x 30	790	1.60
2222 138 37101	40	100	8 x 18	180	1.11
2222 138 37221	40	220	10 x 25	350	1.68
2222 138 17471	40	470	12.5 x 30	650	1.48
2222 138 17102	40	1000	15 x 30	970	2.06
2222 138 38229	63	22	6.5 x 18	100	1.03
2222 138 38479	63	47	8 x 18	150	1.11
2222 138 38101	63	100	10 x 25	280	1.68
2222 138 18221	63	220	12.5 x 30	560	1.47
2222 138 18471	63	470	15 x 30	860	2.02
2222 138 18102	63	1000	18 x 40	1460	3.21
2222 138 19101	100	100	12.5 x 30	410	1.55
2222 138 19221	100	220	15 x 30	650	2.17
2222 138 19471	100	470	18 x 40	1130	3.44



## BC COMPONENTS LONG-LIFE SNAP-IN CAPACITORS

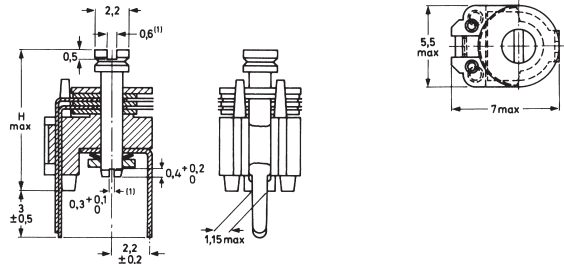
**FEATURES:** Long life up to 10000 hours at 105°C. Low ESR, high ripple current capability. **SPECIFICATIONS:** Temperature range: -40 to 105°C. Tolerance: ±20%. Shelf life at 40°C and 1.9xI<sub>r</sub> applied: 500 hours. Climatic category IEC 60068: 40/105/56.

Cat. No.	Cap (µF)	Diameter D x L (mm)	Ripple Current (A)	Max. ESR Ohms 120 Hz +20°C	Net Price
<b>40VDC</b>					
222205857222	2200	22 x 30	2.04	87	\$3.54
222205857332	3300	25 x 30	2.43	71	3.98
222205857472	4700	30 x 30	2.96	59	4.67
222205857103	10000	35 x 40	4.18	46	6.76
<b>63VDC</b>					
222205858222	2200	30 x 30	2.27	101	4.62
222205858332	3300	30 x 40	3.07	70	5.45
222205858472	4700	35 x 40	3.65	60	6.62
222205858682	6800	35 x 50	4.58	46	7.89
222205859102	1000	30 x 30	1.79	163	4.67

## BC COMPONENTS SCREW TERMINAL HIGH RIPPLE POWER CAPACITORS

**FEATURES:** Long life. Pressure relief in the sealing. **SPECIFICATIONS:** Temperature range: -40 to +85°C. Tolerance: ±20%. Shelf life at 0V, 85°C: 500 hours. Climatic category IEC 60068: 40/085/56.

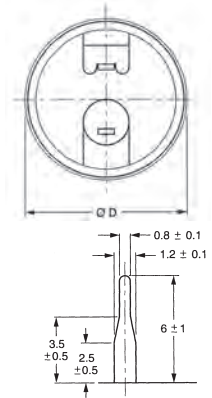
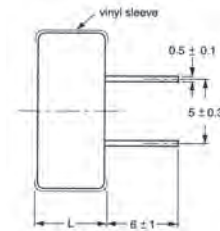
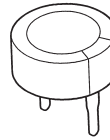
Cat. No.	Cap (µF)	Diameter D x L (mm)	Ripple Current (A)	Max. ESR Ohms 120 Hz +20°C	Net Price
<b>25VDC</b>					
222210126333	33000	50 x 80	9	19	\$21.82
222210116473	47000	35 x 105	12.1	15	21.45
<b>40VDC</b>					
222210127473	47000	50 x 105	14.6	12	31.18
<b>63VDC</b>					
222210128103	10000	35 x 105	8.1	27	20.25
222210128223	22000	50 x 105	11.1	19	29.78
222210128333	33000	65 x 105	12.9	14	42.17
<b>100VDC</b>					
222210129332	3300	35 x 80	6	42	18.98
222210129103	10000	50 x 105	10.5	21	32.92
<b>250VDC</b>					
222210223682	6800	76 x 146	18.1	21	51.89
<b>450VDC</b>					
222210227102	1000	50 x 105	5.7	118	32.35



## BC COMPONENTS 808 FILM DIELECTRIC TRIMMER CAPACITORS

The 808 series trimmer capacitors has been designed primarily for UHF and VHF industrial communications. These high stability trimmers are designed for professional or consumer use, vertical or horizontal mounting and are intended for printed circuit board usage. The vanes are stacked on a straight mopolen base with plastic dielectric foils. The top end of the rotor spindle has a screw-driver slot which facilitates adjustment of the trimmer. **SPECIFICATIONS:** Working voltage: 250VDC. Temperature range: -40°C to +70°C.

Cat. No.	Max. Cap. pF	Min. Cap. pF	Temp. Coeff. PPM	Colour of Base	Net Price
<b>5MM VERSION</b>					
222280823508	1.5	5.0	-200±300	Grey	\$0.83
222280823109	2.0	10	-200±300	Yellow	.82
222280823159	2.5	15	-50±200	Blue	.96
222280823209	4.0	20	-50±300	Green	1.09
<b>7.5MM VERSION</b>					
222280811558	1.4	5.5	-400±300	Grey	.68
222280811109	2.0	9.0	-450±450	Yellow	.68
222280811229	2.0	22	-250±350	Green	.68
222280811279	2.0	27	-250±300	Red	.68
222280811339	3.0	33	-250±300	Brown	.82
222280811409	3.0	40	-100±300	Violet	.83
222280811509	3.0	50	-100±300	Black	.99
<b>10MM VERSION</b>					
222280831809	6.0	80	-100±300	Red	1.12
222280831101	7.0	100	-100±300	Violet	1.27
222280832659	5.5	65	-200±300	Yellow	1.11



## BC COMPONENTS ELECTRIC DOUBLE LAYER CAPACITORS

Suitable for energy storage, for backup of semiconductor memories, telecommunication, audio-video, EDP, general industrial, clock and timer systems. **Specifications:** Operating Temperature Range: -25° to +70°C. Tolerance: -20% to +80%. Working Voltage: 55 WVDC. **Features:** Unlimited charge and discharge cycle numbers. No charge-discharge control circuitry and no series resistor necessary. Available in both vertical and low-profile version. Polarized capacitor with high charge density, alternative product to re-chargeable backup batteries.

Cat. No.	Cap	Diameter D x L (mm)	Inflow Current (µA)	Internal Resistance Ω(1KHz)	Net Price
<b>5.5VDC</b>					
222219612104	0.10F	13 x 7	100	75	\$1.95
222219612224	0.22F	13 x 7	135	75	2.12
222219612474	0.47F	12 x 7.5	216	30	5.30
222219612105	1.0F	12 x 7.5	315	30	5.51

Cat. No.	Case Size	Type	( $\mu$ F)	Tol	Net Price*
<b>50 VDC</b>					
NMC0603NPO220J50TRPF	0603	NPO	22pF	$\pm 5\%$	<b>\$10.91</b>
NMC0603NPO330J50TRPF	0603	NPO	33pF	$\pm 5\%$	<b>10.91</b>
NMC0603NPO470J50TRPF	0603	NPO	47pF	$\pm 5\%$	<b>10.91</b>
NMC0603NPO101J50TRPF	0603	NPO	100pF	$\pm 5\%$	<b>10.91</b>
NMC0603NPO221J50TRPF	0603	NPO	220pF	$\pm 5\%$	<b>15.28</b>
NMC0603NPO471J50TRPF	0603	NPO	470pF	$\pm 5\%$	<b>26.19</b>
NMC0603X7R102K50TRPF	0603	X7R	1000pF	$\pm 10\%$	<b>10.04</b>
NMC0603NPO102J50TRPF	0603	NPO	1000pF	$\pm 5\%$	<b>32.73</b>
NMC0603X7R472K50TRPF	0603	X7R	4700pF	$\pm 10\%$	<b>13.09</b>
NMC0603X7R103K50TRPF	0603	X7R	.01 $\mu$ F	$\pm 10\%$	<b>10.04</b>
NMC0805NPO101J50TRPF	0805	NPO	100pF	$\pm 5\%$	<b>17.46</b>
NMC0805X7R102K50TRPF	0805	X7R	1000pF	$\pm 10\%$	<b>17.46</b>
NMC0805NPO102J50TRPF	0805	NPO	1000pF	$\pm 5\%$	<b>39.28</b>
NMC0805X7R103K50TRPF	0805	X7R	.01 $\mu$ F	$\pm 10\%$	<b>17.46</b>
NMC0805X7R104K50TRPF	0805	X7R	.1 $\mu$ F	$\pm 10\%$	<b>21.82</b>
NMC1206X7R103K50TRPF	1206	X7R	.01 $\mu$ F	$\pm 10\%$	<b>39.28</b>
NMC1206X7R104K50TRPF	1206	X7R	.1 $\mu$ F	$\pm 10\%$	<b>39.28</b>

\*Net Price per 1000.

## NIC THIN FILM SMT RESISTORS

**FEATURES:** Precise tolerance and temperature coefficient. EIA standard case sizes 0402-2512. Low noise. Reflow solderable (Pb free termination finish). Sold in reels: 0402 = 10000 and 0603 to 1206 = 5000. **SPECIFICATIONS: Tolerance:** T = .01%, A = .05%, B = .1%, C = .25%, D = .5%, F = 1%. **TC:** S = 5PPM, B = 10PPM, N = 15PPM, C = 25PPM, D = 50PPM. Resistance values based on E24/E96 Decade Values.

Cat. No.	Case Size	Wattage	Res. Range	TC (PPM)	Net Price Per 1000
<b>TOLERANCE: <math>\pm 1\%</math></b>					
NTR04BXXXCTRF	0402	1/16	10-100K	25	<b>\$897.83</b>
NTR06BXXXCTRF	0603	1/16	4.7-332K	25	<b>748.19</b>
NTR10BXXXCTRF	0805	1/10	1.0-1.0M	25	<b>847.95</b>
NTR12BXXXCTRF	1206	1/8	1.0-1.0M	25	<b>1067.42</b>

**NOTE:** RoHS Compliant

## NIC CURRENT SENSING RESISTORS

**FEATURES:** Precise tolerance and temperature coefficient. EIA standard case sizes 0402-2512. Reflow solderable (Pb free termination finish). Sold in reels: 0402 = 10000 and 0603 to 1206 = 5000. **SPECIFICATIONS: Tolerance:** J = 5%, F = 1%. **TC:** E = 100PPM, K = 150PPM, G = 300PPM, H = 400PPM, J = 600PPM.

Cat. No.	Case Size	Wattage	Res. Range	TC (PPM)
<b>TOLERANCE: 1%, 5%</b>				
NCST04XRESYTRF	0402	1/16	0.051 to 1R	200-400
NCST06XRESYTRF	0603	1/10	0.02 to 1R	200-600
NCST10TXRESYTRF	0805	1/8	0.02 to 1R	200-600
NCST12XRESYTRF	1206	1/4	0.01 to 1R	100-600
NCST50XRESYTRF	2010	1/2	0.01 to 1R	100-600
NCST100XRESYTRF	2512	1.0	0.01 to 1R	100-600
NCST100XRESYTRF	2512	1.0	.005 to .01	50-150

**NOTE:** RoHS Compliant. X = Tolerance (F or J), RES = Resistance, Y = TC Code. For a full listing of resistance values please refer to the Electro Sonic Web-site [www.e-sonic.com](http://www.e-sonic.com) or contact your sales representative.

## NIC FERRITE CHIP BEADS

**FEATURES:** Rugged construction in standard EIA sizes. Effective EMC/RFI suppression up to 1 GHz. Current ratings up to 500mA. High impedance over a wide frequency range. Flow and reflow soldering applications. **Operating temperature range:** -40°C to +125°C. Sold in full reels.

Cat. No.	Case Size	Impedance Range @ 100MHz	Tol. Range	Net Price Per 1000
NCB0402PXXXTRF	0402	6.0-600	$\pm 25\%$	<b>\$39.28</b>
NCB0603RXXXTRF	0603	30-1500	$\pm 25\%$	<b>39.28</b>
NCB0805AXXXTRF	0805	30-2200	$\pm 25\%$	<b>34.92</b>
NCB1206EXXXTRF	1206	19-2000	$\pm 25\%$	<b>39.28</b>
NCB1206EXXXTRF	1206	60-70	$\pm 25\%$	<b>61.10</b>
NCB1210CXXXTRF	1210	32-2000	$\pm 25\%$	<b>56.74</b>
NCB1806EXXXTRF	1806	60-150	$\pm 25\%$	<b>99.76</b>
NCB1812DXXXTRF	1812	70-120	$\pm 25\%$	<b>139.66</b>

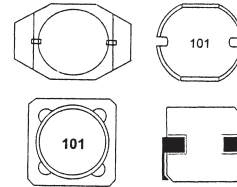
**NOTE:** RoHS Compliant. For current ratings please refer to the Electro Sonic Web-site [www.e-sonic.com](http://www.e-sonic.com) or contact your sales representative. High current NCB-H series also available.

## NIC HIGH CURRENT FERRITE CHIP BEADS

**FEATURES:** Rugged construction in standard EIA sizes. Effective EMC/RFI suppression up to 1 GHz. Current rating up to 6A. High impedance over a wide frequency range. Flow and reflow soldering applications. **Operating temperature range:** -40°C to +125°C. Sold in full reels.

Cat. No.	Case Size	Impedance Range @ 100MHz	Res. Range	Net Price
NCB-H0603RXXXTRF	0603	10-600	$\pm 25\%$	<b>\$43.65</b>
NCB-H0805AXXXTRF	0805	30-600	$\pm 25\%$	<b>39.28</b>
NCB-H1206BXXXTRF	1206	32-600	$\pm 25\%$	<b>43.65</b>
NCB-H1806EXXXTRF	1806	60-80	$\pm 25\%$	<b>139.66</b>
NCB-H1812DXXXTRF	1812	80-1300	$\pm 25\%$	<b>139.66</b>

**NOTE:** RoHS Compliant. For current ratings please refer to the Electro Sonic Web-site [www.e-sonic.com](http://www.e-sonic.com) or contact your sales representative.

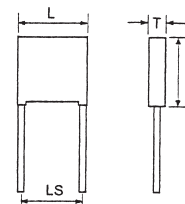


## NIC SMT POWER INDUCTORS

NIC Components NPI and NPIS Series of surface mount power inductors offer the design engineer a wide selection of inductance values, current ratings and sizes.

Cat. No.	Inductance Range $\mu$ H	Dimensions L x W x H	Reel Size	Net Price
NPI32CXXXMTRF	1.0-470	3.5 x 3.0 x 2.1	3000	<b>\$.19</b>
NPI43CXXXMTRF	1.0-560	4.5 x 4.0 x 3.2	2000	<b>.19</b>
NP152CXXXMTRF	1.0-560	5.8 x 5.2 x 2.0	3000	<b>.20</b>
NP154CXXXMTRF	10-220	5.8 x 5.2 x 4.5	1500	<b>.20</b>
NP173CXXXMTRF	10-330	7.8 x 7.0 x 3.5	1000	<b>.23</b>
NPI75CXXXMTRF	10-475	7.8 x 7.0 x 5.0	1000	<b>.23</b>
NPI104CXXXMTRF	10-560	10.0 x 9.0 x 4.0	800	<b>.26</b>
NP1105CXXXMTRF	10-820	10.0 x 9.0 x 5.4	800	<b>.26</b>
NP117LXXXMTRF	1.2-330	5.5 x 6.6 x 1.2	1000	<b>.26</b>
NP131PXXXMTRF	0.33-10	13.5 x 9.91 x 6.35	600	<b>.40</b>
NP152PXXXMTRF	0.78-15	22.35 x 16.25 x 8.0	250	<b>.54</b>
NP116WXXXMTRF	1.0-1000	4.45 x 6.6 x 2.92	2500	<b>.65</b>
NP122WXXXMTRF	3.3-330	8.0 x 10.5 x 5.0	1000	<b>.58</b>
NP130WXXXMTRF	10-1000	10.0 x 12.7 x 3.0	1000	<b>.43</b>
NP131WXXXMTRF	1.0-1000	10.0 x 12.7 x 5.0	500	<b>.40</b>
NP134WXXXMTRF	10-1000	10.0 x 12.7 x 11.0	225	<b>.54</b>
NP152WXXXMTRF	1.0-1000	15.0 x 18.4 x 7.0	250	<b>.72</b>
NP152DXXXMTRF	10-180	4.8 x 4.8 x 2.0	4000	<b>.43</b>
NP154DXXXMTRF	1.2-180	4.8 x 4.8 x 3.0	2500	<b>.43</b>
NP155DXXXMTRF	4.1-100	6.5 x 6.5 x 2.0	4000	<b>.47</b>
NP153DXXXMTRF	2.6-100	5.6 x 5.6 x 3.0	2500	<b>.47</b>
NP156DXXXMTRF	3.0-100	6.6 x 6.6 x 3.0	1500	<b>.54</b>
NP1564DXXXMTRF	3.3-100	6.6 x 6.6 x 4.0	1000	<b>.54</b>
NP1524HXXXMTRF	3.3-330	12.5 x 12.5 x 5.0	600	<b>.43</b>
NP1525HXXXMTRF	1.5-1000	12.5 x 12.5 x 8.0	400	<b>.43</b>
NP1527HXXXMTRF	1.2-1000	12.5 x 12.5 x 8.0	400	<b>.43</b>
NP1523PXXXMTRF	0.1-10	13.6 x 12.9 x 3.5	600	<b>.72</b>
NP1516RXXXMTRF	1.0-10000	4.45 x 6.6 x 2.92	2500	<b>.89</b>
NP1522RXXXMTRF	2.2-1000	8.0 x 10.5 x 5.0	1000	<b>.72</b>
NP1530RXXXMTRF	2.2-470	10.0 x 12.7 x 3.0	1000	<b>.65</b>
NP1531RXXXMTRF	1.0-390	10.0 x 12.7 x 5.0	500	<b>.58</b>
NP1552RXXXMTRF	10-1000	15.0 x 18.4 x 7.0	250	<b>.86</b>

**NOTE:** RoHS Compliant. Replace XXX in Cat. No. with inductor value.



## NIC X2 NPX SERIES FILM CAPACITORS

**FEATURES:** UL, CSA, VDE, SEMKO, NEMKO, DEMKO, FEMKO and CE Approvals for across the line applications. Non-inductive and self-healing construction. **SPECIFICATIONS: Voltage:** 275 VAC. **Tolerance:**  $\pm 10\%$ . **Operating temperature range:** -40°C to +100°C. **Dielectric strength:** 2000VDC for 1 second.

Cat. No.	Capacitance ( $\mu$ F)	Dimensions (mm) L x T x H x LS	Net Price
NPX104K275VX2F	0.1	18 x 6 x 12 x 15	<b>\$.24</b>
NPX224K275VX2F	0.22	26.5 x 7.0 x 16.5 x 22.5	<b>.43</b>
NPX474K275VX2F	0.47	32.0 x 11.0 x 20.0 x 27.5	<b>.83</b>
NPX105K275VX2F	1.0	32.5 x 16.0 x 25.0 x 27.5	<b>1.26</b>

**NOTE:** RoHS Compliant