

FIG 1. RECOMMENDED BREAKOVER VOLTAGE TEST CIRCUIT
(DISCHARGE CURRENT = 10-20MA, SENSITIVITY OF
PEAK VOLTAGE DETECT = 10-30MA)



SWITCHING GAS DISCHARGE TUBES LT SERIES GAS PLASMA VOLTAGE DEPENDENT SWITCHES

DEVICE RATINGS AND SPECIFICATIONS

Cat. No.	⁽¹⁾ V _{Bo} (V)	V _s (V)	V _T @ 5A (V)	⁽²⁾ I _{DRM} (A)	⁽³⁾ I _{Bo} (mA)	⁽⁴⁾ C _o (pF)	V _{Bo} to V _T (nS)	Net Price
LT230A	195-265	184-276	15	1.0	50	2.0	25	\$6.75
LT800A	680-920	640-960	15	1.0	50	2.0	25	6.75

NOTES: ⁽¹⁾ Measured on recommended test circuit (fig. 1). ⁽²⁾ Measured @ 100 volts DC. ⁽³⁾ Current required for transition to on-state. ⁽⁴⁾ Measured @ 1 MHz, zero volt bias.

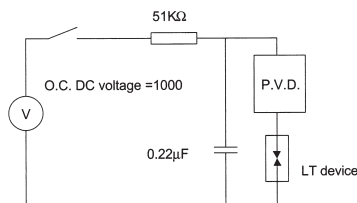
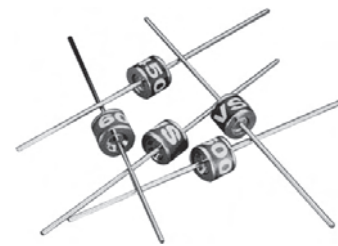


FIG 1. RECOMMENDED BREAKOVER VOLTAGE TEST CIRCUIT
(DISCHARGE CURRENT = 10-20MA; SENSITIVITY OF
PEAK VOLTAGE DETECT = 10-30MA)



SWITCHING GAS DISCHARGE TUBES VS SERIES GAS PLASMA VOLTAGE DEPENDENT SWITCHES

DEVICE RATINGS AND SPECIFICATIONS

Cat. No.	V _{Bo} ⁽¹⁾ (V)	V _T @ 5A (V)	I _{DRM} ⁽²⁾ (A)	I _{Bo} ⁽³⁾ (mA)	C _o ⁽⁴⁾ (pF)	V _{Bo} to V _T (nS)	Net Price
VS230A	200-255	15	1.0	50	2.0	25	\$7.42
VS450A	350-550	15	1.0	50	2.0	25	7.42
VS600A	400-750	15	1.0	50	2.0	25	7.42

NOTES: ⁽¹⁾ Measured on recommended test circuit (fig. 1). ⁽²⁾ Measured @ 300 volts DC. ⁽³⁾ Current required for transition to on-state. ⁽⁴⁾ Measured @ 1 MHz, zero volt bias.



GAS DISCHARGE TUBES HIGH PERFORMANCE BATA RANGE GREENTUBE™ SL1002 SERIES GAS PLASMA ARRESTERS

LITTELFUSE 2 TERMINAL MINI ARRESTER SERIES TOTALLY NON-RADIOACTIVE, UL RECOGNIZED

Cat. No.	DC Voltage @ 100V/sec (V)	Max Dynamic Breakover Voltage @ 100V/μs (Vbr)	Max Dynamic Breakover Voltage @ 1 kV/μs (Vbr)	Max Repetitive Impulse Discharge Current ⁽²⁾ (kA)	Max Single Impulse Discharge Current ⁽⁵⁾ (A)	Max Single Impulse Discharge Current ⁽⁶⁾ (A)	Max Leakage Current ⁽³⁾ (nA)	Max Capacitance ⁽⁴⁾ (pF)	Holdover Voltage ⁽¹⁾ (V)	Nominal On-State Voltage @ 1A (V)	Net Price
SL1002A090SM	90	360	700	5	2	2	100	1.2	50	20	\$1.43
SL1002A230SM	230	400	500	5	2	2	100	1.2	135	20	1.43

NOTES: ⁽¹⁾ Test according to ITU-T Rec.K12. ⁽²⁾ 10 shots, 8/20μs wave form per IEC 61000-4-5. ⁽³⁾ Measured @ 100 volts. ⁽⁴⁾ Measured @ 1 MHz, zero volt bias. ⁽⁵⁾ Measured with 2/10μs wave form. ⁽⁶⁾ Measured with 10/350μs wave form



Cat. No.	Net Price
150mW SWITCHING DIODES/SOD-523	
1N4148WT	\$.15
1N4448HWS-7	.15
200mW SWITCHING DIODES/SOD-323	
1N4148WS	.15
1N4448HWS	.15
1N4448WS	.15
BAV16WS	.16
BAV19WS	.21
BAV20WS	.21
BAV21WS	.21
200mW SWITCHING DIODE ARRAYS/SOT-363	
BAS16TW	.31
BAV199DW	.37
BAV70DW	.37
BAV756DW	.37
BAV99BRW	.50
BAV99DW	.37
BAW567DW	.37
BAW56DW	.37
MMBD4148TW	.31
MMBD4448DW	.15
MMBD4448HADW	.37
MMBD4448HAQW	.45
MMBD4448HCDW	.37
MMBD4448HSDW	.37
MMBD4448HTW	.31
SDA004	00.00
SDA006	00.00
250mW LOW LEAKAGE SIGNAL DIODES/SOD-123	
BAV116W	.15
BAV19W-7-F	.19
BAV20W-7-F	.19
BAV21W-7-F	.19
400mW SWITCHING DIODES/SOD-123	
1N4148W-13-F	.14
1N4448W-7-F	.02
BAV16W-7-F	.14
BAV3004W	.30
150mW NPN TRANSISTORS/SOT-523	
2DC4617Q	.15
2DC4617R	.15
2DC4617S	.15
BC847AT	.15
BC847BT	.15
BC847CT	.15
MMBT2222AT	.15
MMBT3904T	.15
MMBT4401T	.15
400 W TRANSIENT VOLTAGE SUPPRESSORS/SMA	
SMAJ5.0(C)A	.55
SMAJ6.0(C)A	.55
SMAJ7.0(C)A	.55
SMAJ7.5(C)A	.55
SMAJ8.0(C)A	.55
SMAJ9.0(C)A	.55
SMAJ10(C)A	.55
SMAJ12(C)A	.55
SMAJ13(C)A	.55
SMAJ14(C)A	.55
SMAJ18(C)A	.55
SMAJ20(C)A	.55
SMAJ22(C)A	.55
SMAJ24(C)A	.55
SMAJ28(C)A	.55
SMAJ30(C)A	.55
SMAJ33(C)A	.55
SMAJ40(C)A	.55

Cat. No.	Net Price
400 W TRANSIENT VOLTAGE SUPPRESSORS/SMA (CONT'D)	
SMAJ43(C)A	\$.55
SMAJ48(C)A	.55
SMAJ51(C)A	.55
SMAJ58(C)A	.55
SMAJ60(C)A	.55
SMAJ70(C)A	.55
SMAJ75(C)A	.55
SMAJ85(C)A	.55
SMAJ90(C)A	.55
SMAJ110(C)A	.55
SMAJ120(C)A	.55
SMAJ150(C)A	.55
SMAJ160(C)A	.55
SMAJ170(C)A	.55
SMAT70A	.50
600 W TRANSIENT VOLTAGE SUPPRESSORS/SMB	
SMBJ5.0(C)A	.92
SMBJ6.0(C)A	.92
SMBJ7.0(C)A	.92
SMBJ7.5(C)A	.92
SMBJ8.0(C)A	.92
SMBJ9.0(C)A	.92
SMBJ10(C)A	.92
SMBJ12(C)A	.92
SMBJ13(C)A	.92
SMBJ14(C)A	.92
SMBJ18(C)A	.92
SMBJ20(C)A	.92
SMBJ22(C)A	.92
SMBJ24(C)A	.92
SMBJ28(C)A	.92
SMBJ30(C)A	.51
SMBJ33(C)A	.92
SMBJ40(C)A	.92
SMBJ43(C)A	.92
SMBJ48(C)A	.92
SMBJ51(C)A	.92
SMBJ58(C)A	.92
SMBJ60(C)A	.92
SMBJ70(C)A	.92
SMBJ75(C)A	.92
SMBJ85(C)A	.92
SMBJ90(C)A	.57
SMBJ110(C)A	.92
SMBJ120(C)A	.92
SMBJ150(C)A	.92
SMBJ160(C)A	.92
SMBJ170(C)A	.92
SMBT70A	.60
1500 W TRANSIENT VOLTAGE SUPPRESSORS/SMC	
SMCJ5.0(C)A	1.72
SMCJ6.0(C)A	1.72
SMCJ7.0(C)A	1.72
SMCJ7.5(C)A	1.72
SMCJ8.0(C)A	1.72
SMCJ9.0(C)A	1.72
SMCJ10(C)A	1.72
SMCJ12(C)A	1.72
SMCJ13(C)A	1.72
SMCJ14(C)A	1.72
SMCJ18(C)A	1.72
SMCJ20(C)A	1.72
SMCJ22(C)A	1.72
SMCJ24(C)A	1.72
SMCJ28(C)A	1.72
SMCJ30(C)A	1.72
SMCJ33(C)A	1.72
SMCJ40(C)A	1.72
SMCJ43(C)A	1.72
SMCJ48(C)A	1.72
SMCJ51(C)A	1.72

Cat. No.	Net Price
1500 W TRANSIENT VOLTAGE SUPPRESSORS/SMC (CONT'D)	
SMCJ58(C)A	\$1.72
SMCJ60(C)A	1.72
SMCJ70(C)A	1.72
SMCJ75(C)A	1.72
SMCJ85(C)A	1.72
SMCJ90(C)A	1.72
SMCJ100(C)A	1.72
SMCJ110(C)A	1.72
SMCJ120(C)A	1.72
SMCJ150(C)A	1.72
SMCJ160(C)A	1.72
SMCJ170(C)A	1.72
1500 W TRANSIENT VOLTAGE SUPPRESSORS/DO-201AD	
1.5KE6V8(C)A	.87
1.5KE7V5(C)A	.87
1.5KE8V2(C)A	.87
1.5KE9V1(C)A	.87
1.5KE10(C)A	.87
1.5KE11(C)A	.87
1.5KE12(C)A	.87
1.5KE13(C)A	.87
1.5KE15(C)A	.87
1.5KE16(C)A	.87
1.5KE18(C)A	.87
1.5KE20(C)A	.87
1.5KE22(C)A	.87
1.5KE24(C)A	.87
1.5KE27(C)A	.87
1.5KE30(C)A	.87
1.5KE33(C)A	.87
1.5KE36(C)A	.87
1.5KE39(C)A	.87
1.5KE43(C)A	.87
1.5KE47(C)A	.87
1.5KE51(C)A	.87
1.5KE56(C)A	.87
1.5KE62(C)A	.87
1.5KE68(C)A	.87
1.5KE75(C)A	.87
1.5KE82(C)A	.87
1.5KE91(C)A	.87
1.5KE100(C)A	.87
1.5KE110(C)A	.87
1.5KE120(C)A	.90
1.5KE130(C)A	.90
1.5KE150(C)A	.90
1.5KE160(C)A	.90
1.5KE170(C)A	.90
1.5KE180(C)A	.90
1.5KE200(C)A	.90
1.5KE220(C)A	1.25
1.5KE250(C)A	1.25
1.5KE300(C)A	1.25
1.5KE350(C)A	1.25
1.5KE400(C)A	1.25
1.0A SCHOTTKY RECTIFIERS/DO-41	
1N5817	00.00
1N5818	00.00
1N5819	00.00
1.0A SUPER-/ULTRA-FAST RECOVERY RECTIFIERS/DO-41	
UF1001TR	.11
UF1002-B	.22
UF1003-TR-5000	.11
UF1004	.20
UF1005	.22
UF1006	.25
UF1007	.27

Continued on next page....