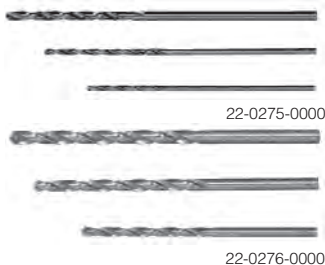


PLUG-IN IC PROTOTYPE BOARD

IC's plug directly into board. 0.1" spacing accepts 14 x 14 pin or 16 pin IC's, up to 20 pin IC's. Silver plated lands with 24 way card edge connector plug on one end. Made of tough phenolic. 0.1" centers x 2 3/8" wide x 4" long x 1/16" thick.

Cat. No.	Net Price
22-0500-0000	\$3.17



DRILL BIT SETS

For drilling component lead wire holes in phenolic and glass epoxy PC boards. Made of high speed tool steel for long life.

Cat. No.	Set Contains	Net Price
22-0275-0000	No. 66 bit .0330" dia., no. 60 bit .0440" dia., no. 1/16 bit .0625" dia.	\$6.20
22-0276-0000	No. 31 bit .1200" dia., no. 27 bit .1440" dia., no. 3/32 bit .0928" dia.	5.12



ETCH RESIST INK PENS

Black felt tip pen for making resist circuits directly on PC boards. Dries instantly for neat, easy application. Can be removed with PC board stripping solution (22-0240-0000).

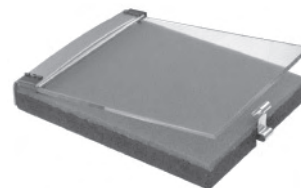
Cat. No.	Description	Net Price
22-0220-0000	Std. size, 1/32" wide	\$3.24
22-0222-0000	Fine line, 1/64" wide	3.45



PURE COPPER CIRCUIT TAPE

6 foot roll of self adhesive pure copper tape for quick repairs or circuit modification. Adheres readily to PC boards chassis and similar surfaces, solders readily. Flexible enough to be used around corners. Extremely low resistance (.020" thick). Supplied on 1" I.D. core.

Cat. No.	Dimensions	Net Price
22-0507-0000	1/8" wide	\$3.86
22-0509-0000	1/4" wide	4.28



EXPOSING FRAMES

Contact frames for use with Exposing Stand. Assures perfect transfer of circuit to sensitized PC board. Special plate glass is hinged for easy use. Foam cushion assures tight contact.

Cat. No.	For Board Size	Net Price
22-0280-0000	4 1/2" x 6 1/2"	\$37.48
22-0393-0000	10" x 12"	52.10



PROFESSIONAL PC BOARD POWER ETCHING SYSTEM KIT

A semi-automatic etching device for use in labs, schools, prototype shops and for limited PC board production. Reduces etching time to minutes. Air pump agitates etching solution for fast, very even etches. Handles up to two 8" x 10" PC boards at a time, either single or double sided. Tank comes with a tip proof wire stand that can remain portable or attached to the bench with screws. Boards fit into a submersible rack with handles that keep hands away from etchant as well as separating the PC boards. Lid prevents splashes, reduces evaporation, and can be turned upside down and used as an auxiliary tray. Kit contains: 1 Etching tank and reservoir lid (12"H x 2 1/2" W x 10 1/2" L) molded polyethylene-ABS PC board holder. 1 Etch-O-Matic power agitating pump, 120 VAC operation, 1 Permanent or portable tip free base. 1 PC board holder and handle. 10 feet of supply hose.

Cat. No.	Description	Net Price
22-0394-0000	Etching System	\$99.03
22-0392-0000	Thermostat Heater	21.11

A001 SERIES DORMER HIGH SPEED STRAIGHT SHANK JOBBER LENGTH NUMBER SIZE DRILL BITS

Cat. No.	Net Price
A002-10.70MM	\$17.48
A002-10.60MM	16.96
A002-10.50MM	16.73
A002-10.40MM	16.73
A002-10.30MM	15.78
A002-11.20MM	19.67
A002-11.10MM	19.17
A002-11.00MM	12.90
A002-10.90MM	18.32
A002-10.80MM	17.99
A002-11.30MM	20.19
A002-11.70MM	22.23
A001-11.60MM	21.72
A001-11.50MM	14.17
A002-11.40MM	20.69
A002-12.20MM	24.95
A002-12.10MM	24.42
A002-12.00MM	15.61
A002-11.90MM	23.25
A002-11.80MM	22.73
A002-12.70MM	17.48
A002-12.60MM	27.49
A002-12.50MM	16.96
A002-12.40MM	26.12
A002-12.30MM	25.64
A002-13.00MM	18.67
A002-12.90MM	29.36
A002-12.80MM	28.66



2200, 2202, AND 2500 SERIES DORMER HIGH SPEED STEEL PLUG TAPS

Cat. No. & Size	Net Price
2500 4-32 REF.XNS	\$34.72
2202 8-32 REF.XGPM	8.66
2202 10-24 REF.XGPM	9.20



0903, 0904, 0909, 0913 SERIES DORMER DRILL KITS FRACTIONAL AND METRIC SIZES

Dormer Drill Kits come in retractable steel cases or moulded plastic containers. Drill indexes have easy to read decimal equivalents. Will hold short drills as well as standard length. Most compact and efficient filing system for twist drills. Comes complete with Drills.

Cat. No.	No. of Drills	Range	Net Price
RETRACTABLE STEEL CASE—FRACTIONAL SIZES			
0903 4	11	1/16" to 3/8" by 32nds	\$65.49
0903 12	60	Drill Gauge Sizes 1-60	168.64
0903 18	29	1/16" to 1/2" by 64ths	301.61
0903 20	15	1/16" to 1/2" by 32nds	125.00
0903 60	13	1/16" to 1/4" by 64ths	60.00
RETRACTABLE STEEL CASE—METRIC SIZES			
0913201	19	1mm to 10mm by .5mm	90.00
0913202	51	1mm to 6mm by .1mm	110.00
0913204	25	1mm to 13mm by .5mm	170.00
MOULDED PLASTIC CONTAINERS—FRACTIONAL SIZES			
0904 61-80	20	Drill Gauge Sizes 61-80	65.00

GIVING YOU WHAT YOU WANT!



- SPEED
- PRODUCTS
- INFORMATION
- PROCUREMENT
- LINKS

IT'S ALL HERE... www.e-sonic.com