



SINGLE CABLE RING

- Mounts to standard 19" rack rails.
- Steel construction.
- 3.5" long x 1.25" wide.
- Rugged textured black powder paint finish.
- Mounting hardware not included, please order separately.

Cat. No.	Panel Height		Units	Net Price
	Inches			
CMRBK1	1.75		1	\$7.21
CMR3BK1	3.50		2	9.61



RACK MOUNT/TABLE TOP INSTRUMENT

- Easy assembly.
- Strong construction using .125" thick side panels and 0.62" thick top and bottom panels.
- Light weight design—all aluminum.
- Can be used with or without rack mounting brackets (included).
- Front & rear panel are interchangeable (one is off white and the other smooth black).
- Enclosure is finished in textured black powder paint.
- Includes top, bottom, side panels, feet, rack mount brackets and all hardware.
- Easy access to inside, as only 4 screws need to be removed from any panel.
- Aluminum chassis panel is optional.

Cat. No.	Panel Height		Width (In.)	Depth (In.)	Inside Clearance with Chassis Installed (In.)	Net Price
	Inches	Units				

SOLID TOP AND BOTTOM

RMCS19018BK1	1.75	1	17	8	0.81	\$77.82
RMCS190113BK1	1.75	1	17	13	0.81	91.56
RMCS19038BK1	3.50	2	17	8	2.56	86.98
RMCS190313BK1	3.50	2	17	13	2.56	109.87
RMCS190513BK1	5.25	3	17	13	4.31	125.89
RMCS190713BK1	7.00	4	17	13	6.06	144.20
RMCS190813BK1	8.75	5	17	13	7.81	173.96
RMCS191013BK1	10.50	6	17	13	9.56	192.27
RMCS191015BK1	10.50	6	17	15	9.56	189.98

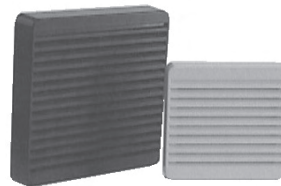
VENTILATED TOP AND BOTTOM

RMCV19018BK1	1.75	1	17	8	0.81	85.60
RMCV190113BK1	1.75	1	17	13	0.81	100.71
RMCV19038BK1	3.50	2	17	8	2.56	95.67
RMCV190313BK1	3.50	2	17	13	2.56	120.84
RMCV190513BK1	5.25	3	17	13	4.31	138.49
RMCV190713BK1	7.00	4	17	13	6.06	158.62
RMCV190813BK1	8.75	5	17	13	7.81	191.36
RMCV191013BK1	10.50	6	17	13	9.56	211.49
RMCV191015BK1	10.50	6	17	15	9.56	208.98

CHASSIS PANEL

Cat. No.	Width	Use with Enclosure Depth (In.)	Net Price
RMP908	8.5	8	\$18.20
RMP1908	17	8	27.24
RMP1913	17	13	31.58
RMP1915	17	15	34.67

ENVIRONMENT CONTROL



ECONOMY PLASTIC FILTER FAN GRILLS

- Create your own filter fans or exhaust grill.
- Mounts easily with 4 screws using template and hardware provided.
- Complete with flame retardant ABS plastic grill & flame retardant synthetic filter.
- Can be used with standard 3.15" (80mm) or 4.7" (120 mm) square fans.

Cat. No.	Grill Size		Use with Square Fan Size	Colour	Net Price
	H	W			
XPFA80BK	4.13"	4.13"	3.15"	Black	\$8.07
XPFA80CG	4.13"	4.13"	3.15"	Grey/Beige	8.07
XPFA80GY	4.13"	4.13"	3.15"	ASA 61 Grey	8.07
XPFA120BK	5.91"	5.91"	4.70"	Black	12.29
XPFA120CG	5.91"	5.91"	4.70"	Grey/Beige	12.29
XPFA120GY	5.91"	5.91"	4.70"	ASA 61 Grey	12.29

REPLACEMENT FILTERS FOR ABOVE (5 PER PACK)

Cat. No.	Use with Square Fan Size	Net Price
PFF1000	3.15" (XPFA80 series)	\$8.70
PFF2000	4.70" (XPFA120 series)	9.93



Most electronic control systems generate a substantial amount of heat during operation. This heat factor is intensified as electronic controls are made more compact, perform more functions, and are placed in confined areas.

Additional problems are encountered when the electronic process control system is located on-line in an industrial setting, rather than in a clean computer room. The factory environment can be hostile to the point that performance and effective life of the electronic components are materially reduced, or the control system fails completely. Ambient temperature might be excessively high, as that found in a steel mill. Moisture-laden air and airborne particulate matter might be present to adversely affect the electronic components, as in the paper manufacturing industry.

Air conditioners are designed to perform reliably under many of these harsh conditions and to provide the cooling and environmental protection required by sensitive electronic production control systems.

Cat. No.	Rating	Rated Voltage	Hz	Height	Width	Depth	Net Price
DTS1200A115	1200BTU/H	115	60	13.00	14.76	7.48	\$2404.53
DTS2000A115	2000BTU/H	115	60	17.52	12.40	10.04	2506.38
DTS3500A115	3500BTU/H	115	60	36.00	15.35	7.87	3163.18
DTS6000A115	6000BTU/H	115	60	53.15	15.35	7.87	3839.02
DTS8000A115	8000BTU/H	115	60	53.15	15.63	10.63	4225.22
DTS12000A115	12000BTU/H	115	60	53.15	15.63	10.63	5445.85

A115 units can be operated 50 Hz at 110 V



FILTER FANS



DESCRIPTION:

- Filter fans provide an economical method of ensuring your enclosure does not overheat.
- Filtered passive ventilation can be provided for either convection cooling or in combination with a fan in forced air cooling.

STANDARDS:

- UR, CUR, and CE.
- Built to IP54 standards (except PF1000/PFA1000-IP43 standards).

FEATURES:

- All models are 115 V with an expected service life of 30,000 hours.
- Flammability - UL94-VO.
- Conversion of the unit from pressurizing to exhaust is done by reversing direction of fan motor.
- High performance fan motors with finger guards.
- Polycarbonate fire retardant plastic grilles, and a durable, reusable filter mat.
- Grilles are black allowing for a complementary match.
- Patented "Click and Fit" system allows for rapid filter fan and exhaust filter installation without screws; this time saving feature will cut installation time by up to 30 minutes from traditional box fan packages.

ACCESSORIES:

- Exhaust filters.
- RAL7032 beige grilles.
- Replacement filters.

Cat. No.	Free Flow Air Delivery (CFM)	Air Delivery w/Exhaust (CFM)	Max. Static Pressure (Pa)	Filter Grade (G/Sq. Ft)	Net Price
PF1000	16	10	29	1615	\$203.16
PF2000	38	28	69	3767	279.35
PF2500	89	62	57	3767	334.15
PF3000	169	142	89	3767	399.78
PF5000	324	249	205	3767	515.00
PF6000	410	295	225	3767	589.91

Filter level is 73%.

Ambient temperature °F max/min is 122/14 except PF1000 which is 140/14.



FILTERED FAN BOXES

DESCRIPTION:

- High airflow with low noise operation makes these versatile cooling fans very popular in a wide range of applications.
- Reliable cooling is achieved particularly in areas with minimum space requirements.
- The cooling system incorporates the filtered fan boxes as its air inlet, while the exhaust grille is the air outlet.
- The washable aluminum filter grille and the air filter are easily accessible and can be removed for cleaning.
- The filtered fan boxes are available in either 115VAC or 230VAC, 50/60 Hz.

STANDARDS:

- UR/CUR/CE approved fan motors.

FEATURES:

- 115VAC or 230VAC, 50/60 Hz.
- Optional 12, 24, or 48 Volt brushless DC.
- Exceptionally quiet operation.
- Versatile mounting and adaptability.
- Heavy-gauge steel construction with attractive stainless steel grilles.
- All models can pressurize or exhaust.
- Aluminum filter is coated with adhesive baffle surfaces for dust and dirt collection. Can be recoated after cleaning for optimum performance.
- NOTE: One grille and filter are included with each fan package. Normally, an additional exhaust grille and filter are required for each installation and must be ordered separately.

ACCESSORIES:

- Filtered coat.

FILTERED FAN BOXES

Cat. No.	Free Flow Air Delivery CFM	Volts	PM Nominal	Running Amps	Dimensions			Net Price
					H	W	D	
XF4115	105	115	3000	0.18	6.13	7.38	2.38	\$151.73
XF4230	105	230	3000	0.09	6.13	7.38	2.38	161.02
XF6115	220	115	3300	0.29	7.63	8.88	3.00	257.38
XF6230	220	230	3300	0.15	7.63	8.88	3.00	270.83
XF10115	560	115	1600	0.87	11.63	13.00	4.56	359.62

EXHAUST GRILLE AND FILTERS

Cat. No.	H	W	D	Opening W	Net Price
XFG4	6.13	7.38	5.63	6.38	\$67.05
XFG6	7.63	8.88	7.13	7.88	71.07
XFG10	11.63	13.00	11.13	11.88	94.30

*Dimension for mounting and cabinet cutout. Secure sheet metal with #8 hardware.



EXHAUST FILTERS

EXHAUST FILTERS

- Built to IP54 standards (except PFA1000 - IP43 standards).
- Flammability - UL94-VO.
- Polycarbonate fire retardant plastic grilles, and a durable, re-usable filter mat.
- Grilles are black allowing for a complementary match to all cabinet colours.
- Gasket included.

Cat. No.	Filter Grade (G/Sq. Ft)	Filtering Level	Comparable IP Standard	Net Price
PFA1000	1615	73%	IP43	\$42.80
PFA2000	3767	73%	IP54	49.22
PFA3000	3767	73%	IP54	92.29
PFA5000	3767	73%	IP54	108.51



HEATERS

- Designed to provide enclosed electronic, pneumatic, hydraulic and mechanical equipment with protection from low temperatures, condensation and corrosion.
- The PTC (Positive Temperature Coefficient) heater unit maintains a stable temperature environment within enclosures, allowing critical components to perform with consistent reliability for longer periods.
- Thermostats are also available.

Cat. No.	Watts	Surface Temp. (Degrees F)	Starting Current	Net Price
SHG14000	15	149	0.6A	\$89.52
SHG14001	30	167	1.2A	92.72
SHG14003	45	194	1.5A	124.48
SHG14006	75	203	2.0A	158.63
SHG14007	100	212	3.0A	175.45



HEATER FANS

- When larger heating capacities or internal forced air circulation is required.
- Designed to prevent condensation or maintain minimum temperature in enclosures.
- Thermostats available.
- AC 110-120V, 50/60 Hz.

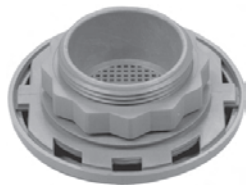
Cat. No.	Watts	Surface Temp	Starting Current	Dimensions L×W×D	Net Price
SHGL04600	250 W	167°F	2.2 A	7×3.15×3.15	\$438.98
SHGL04601	400 W	167°F	3.5 A	9.76×3.15×3.15	464.92



CONTROL PANEL HEATER

- When larger heating capacities or internal forced air circulation is required and space is limited.
- Compact design to prevent condensation or maintain minimum temperature in enclosures.
- Operating voltage of AC 110-120V, 50/60 Hz.

Cat. No.	Watts	Current (Amps)	Temperature Maximum with Fan	Net Price
SHV031029	100 W	0.89	250°F/120°C	\$277.27
SHV031039	150 W	1.30	320°F/160°C	287.07
SHV031139	200 W	1.79	250°F/120°C	313.87
SHV031149	300 W	2.62	320°F/160°C	328.28
SHV031159	400 W	3.45	3.60°F/180°C	340.67



BREATHER KIT (PRESSURE COMPENSATION PLUGS)

- Packaged individually.
- Provides for controlled pressure compensation due to temperature variations (i.e. night/day operation).
- Recommend two plugs per cabinet in opposite locations.
- Minimum cutout diameter 1.46".

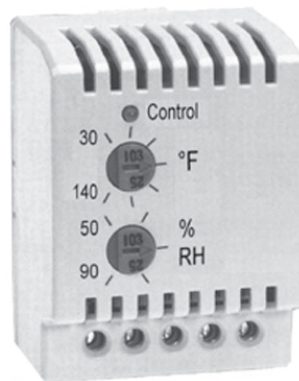
Cat. No.	Dimensions (Diameter×H)	Ship Wt. (Lbs.)	Net Price
SDA412	2.6"×1.2"	1	\$12.97



THERMOSTAT

- Designed to provide air temperature control and monitoring in switch-gear cabinets.
- Switching Capacity: 15A(1) AC 120V, 10A(1) AC 250V
- Thermostat NC (Normally Closed) for the control of heaters and heater fans.
- Thermostat NO (Normally Open) for the control of cooling units, or for switching signal transmitters in case of overheating.

Cat. No.	Scale	Contact Type	Dimensions			Net Price
			H	W	D	
SKT011409NC	°F	Normally Closed	2.4"	1.3"	1.4"	\$39.75
SKT011409NC-C	°C	Normally Closed	2.4"	1.3"	1.4"	39.75
SKT011419NO	°F	Normally Open	2.4"	1.3"	1.4"	39.75
SKT011419NO-C	°C	Normally Open	2.4"	1.3"	1.4"	39.75



ELECTRICAL HUMIDITY AND TEMPERATURE CONTROL

- Designed to provide both air temperature and humidity control as well as monitoring in electrical and electronic enclosures.
- Independently senses the relative humidity and temperature. Resistive and inductive loads (heaters or filter fans) can be switched.
- Highly effective in ATMs, parking control gates, ticket dispensers and traffic control systems where equipment is exposed to wide ranging outdoor elements.

Cat. No.	Dimensions	Switching Capacity	Net Price
SKTH012009	2.64×1.97×1.54	AC 8 A @ 115 V DC 0.5 A @ 100 V DC 8 A @ 12 V DC 5 A @ 35 V	\$280.12