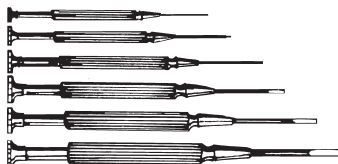




### FLEXIBLE EXTENSION SHAFT, 3.5 POUNDS OF TORQUE CORDLESS SCREWDRIVER

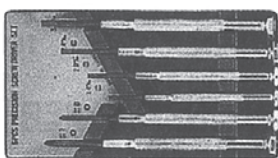
Cat. No.	Description	Net Price
73-610	Extension	\$14.64



### LENLINE JEWELERS SCREWDRIVER SET

This useful set of jewelers' screwdrivers represent excellent value. For work on watches, clocks, instruments, optical products, models. Handles solid, non-rusting-brass, nicely nickel plated for good appearance. Straight knurled for good grip. Swivel heads, also nickel plated brass, hex shaped to prevent rolling off bench. Tool steel blades, properly tempered for long life. Easily sharpened on bench stone. 6 screwdrivers packed in an attractive plastic box. Width of blades ( $\frac{1}{32}$ " to  $\frac{1}{8}$ ""). Diameter of handles ( $\frac{3}{64}$ " to  $\frac{3}{32}$ "").

Cat. No.	Net Price
CDVSP	\$1.79



### 6 PIECE PRECISION SCREWDRIVER SET

6 piece precision screwdriver set with 2 phillips and 4 slot heads. Nickel plated knurled metal bodies for easy gripping. Swivel heads and steel tempered blades, complete in a plastic case. Phillips tips: no's 0 & 1. Slot tips: 1.0 1.2 1.6 & 2.0 mm.

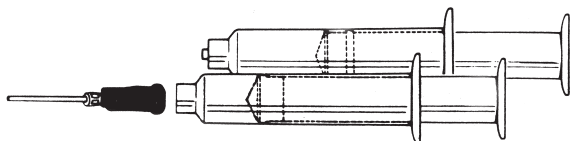
Cat. No.	Net Price
08-395E	\$1.79



### LENLINE TRIMMING TOOL SET

10 piece trimming tool set. Manufactured from ABS plastic trimming tools are extra strong and easy to grip.

Cat. No.	Net Price
08-001	\$3.93



### LENLINE DISPENSERS AND TIPS FOR SOLDER PASTES AND FLUIDS

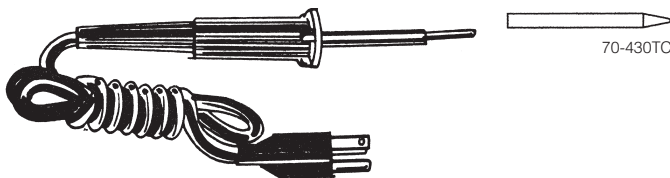
Lenline dispensers are available in three barrel sizes and seven tip sizes. Complete assemblies are complete with plunger, stopper, barrel, and tip.

### COMPLETE ASSEMBLIES

Cat. No.	Barrel Length mm	Barrel I.D. mm	Top Gauge	Net Price
<b>BARREL SIZE 5cc</b>				
57-0122-0	77.5	12.7	18	\$2.50
57-0123-0	77.5	12.7	20	2.50
57-0124-0	77.5	12.7	21	2.50
57-0125-0	77.5	12.7	22	2.50
57-0126-0	77.5	12.7	23	2.50
57-0128-0	77.5	12.7	25	2.50
57-0131-0	77.5	12.7	30	2.50
<b>BARREL SIZE 10cc</b>				
57-0142-0	89.5	15.8	18	2.95
57-0143-0	89.5	15.8	20	2.95
57-0144-0	89.5	15.8	21	2.95
57-0145-0	89.5	15.8	22	2.95
57-0146-0	89.5	15.8	23	2.95
57-0148-0	89.5	15.8	25	2.95
57-0151-0	89.5	15.8	30	2.95

### TIPS

Cat. No.	Tip Gauge	Net Price
FDT18	18	\$.43
FDT20	20	.43
FDT21	21	.43
FDT22	22	.43
FDT23	23	.43
FDT25	25	.43
FDT30	30	.43



### LENLINE 30 WATT SOLDERING IRON

30 watt CSA approved soldering iron with a 3 wire grounded AC cord. Stainless steel barrel and nickel plated replacement tips. Black heat resistant high impact handle.

Cat. No.	Description	Net Price
70-430T	Soldering iron	\$8.21
70-430TC	Conical—4mm replacement tip	.75

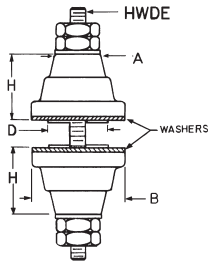


### LENLINE PROFESSIONAL HEAT GUN

The PG-103A heat gun operates on two temperatures and two speeds. The temperature ranges from 700 degrees F to 1100 degrees F. Operating voltage: 120 volts/1400 watts, cUL approved. Ideally suited for heat shrink tubing and comes complete with a hooked reflector nozzle and concentrator.

Cat. No.	Net Price
PG-103A	\$35.71

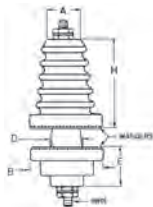
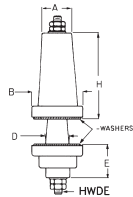
## HH Smith



### STEATITE INSULATED THRU-PANEL BUSHINGS

Consists of a pair of steatite insulators along with cushion washers and hardware. The 9555 assembly has interlocking insulators which are self centering in mounting hole and may be used on very thin panels. Cushion washers are "Champak" compressed paper or cork. These insulators are ideal for high-voltage, high temperature applications.

Cat. No.	Dimension				Hdwre
	H	B	D	A	
9550AA	1/2"	3/4"	1/2"	3/8"	6-32
9552AA	1-1/8"	1-3/4"	1-1/4"	7/8"	1/4"-20



N

### THRU-PANEL HIGH VOLTAGE INSULATORS

These insulators are ideal for high-voltage, high-temperature standoff and/or feedthru applications. They are not intended for high-vacuum or hermetically sealed use, nor with heavy shear-loads. Compression mounted by means of a stud throughout the entire length of the unit. Extrusion of insulator base extends thru mounting hole, increasing the voltage breakdown rating. Units have flat mounting surfaces and are furnished with cushion washer. Types with jacks have terminal permitting connection above, as well as below panel.

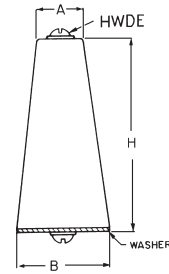
#### STEATITE

Cat. No.	Illus.	H	B	D	E	A	Hdwre.
9542AA	L	7/8"	3/4"	1/8"	3/8"	1/2"	10-32
9540AB	L	1-1/4"	15/16"	7/16"	1/2"	19/32"	10-32

#### PORCELAIN

9545	N	1-3/8"	1-1/4"	1/2"	1 1/16"	5/8"	10-32
9546AA	L	2-3/4"	1-3/8"	1 1/16"	1"	15/16"	1/4"-20
9547AA	L	4-1/2"	2-1/8"	3 1/32"	1-1/2"	1-1/16"	1/4"-20

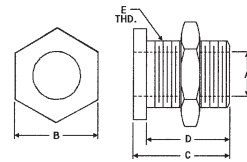
**NOTE: PLEASE CONTACT YOUR ELECTRO SONIC SALES REPRESENTATIVE FOR PRICING AND AVAILABILITY**



### STEATITE CONE INSULATORS

Constructed of grade L-423 or better steatite, with threaded holes. Insulators are furnished complete with two nickel-plated machine screws, nickel-plated brass washers, with cork cushion washer.

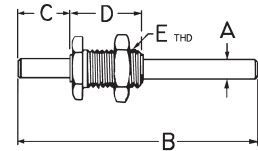
Cat. No.	H	B	A	Hdwre
9500	2 1/32"	5/8"	7/16"	6-32
9501	1-1/32"	3/4"	1/2"	8-32



### PANEL BEARING

**MATERIAL:** Brass, nickel-plated. Supplied with hex nut. Thread: 3/8-32. For 1/4 shaft.

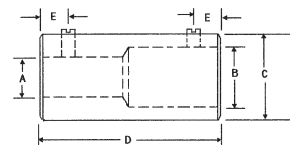
Cat. No.	Dimensions (Inches)			
	A	B	C	D
119	.253	7/16	1/2	7/16



### HH SMITH PANEL BEARING ASSEMBLIES

Brass, nickel-plated for 1/4" and 1/8" shafts.

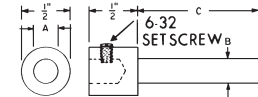
Cat. No.	Dimensions				
	A	B	C	D	E
148	.250"	3"	1/2"	1/2"	3/8"-32
149	.250"	6"	1/2"	1/2"	3/8"-32



### SHAFT COUPLERS

**MATERIAL:** Brass, nickel-plated. #2 screws.

Cat. No.	Dimensions (Inches)				
	A	B	C	D	E
120	1/4	1/4	7/16	3/4	3/16



### HH SMITH SHAFT EXTENDERS LONG SHAFT TYPE

Cat. No.	A	B	C	Material
150	1/4"-1/4"		1-1/4"	Brass
160	1/4"-1/4"		3/8"	Brass