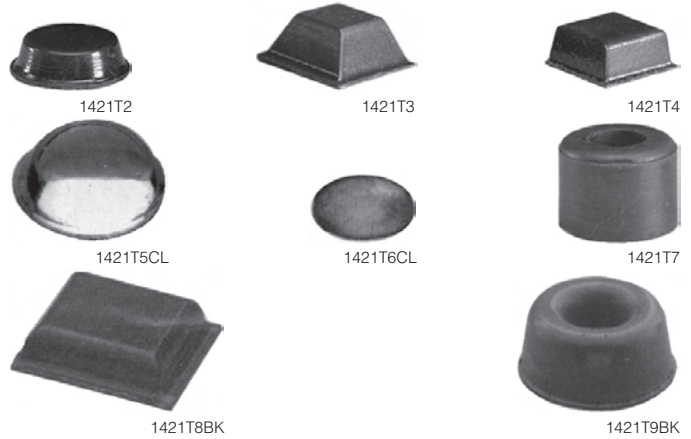


1427D SERIES BAILS (TILT STANDS)

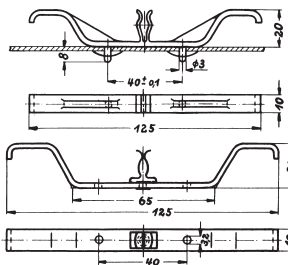
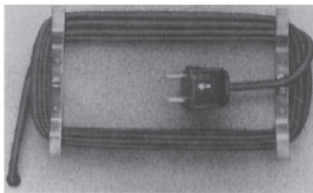
These bails lock in either the elevated or folded position. The bail is .14" dia. chromed steel. 4-screw-on nylon feet (0.6" high) and self-tapping screws are included, two for rear mount and two to mount front mounting bail.

Cat. No.	Mounting Centers	Net Price
BAILS (TILT STAND)		
1427D5	5.5"	\$14.85
1427D7	7.0"	16.35
1427D10	10.0"	17.28



HAMMOND 1421 SERIES RUBBER MOUNTING FEET

Cat. No.	Description	Colour	Dimensions	Style	Pkg. Qty.	Net Price
RUBBER MOUNTING FEET						
1421T2	Self-adhesive	Black	.5" x .14"	Flat Round	24	\$5.62
1421T2CL	Self-adhesive	Clear	.5" x .14"	Flat Round	24	5.62
1421T2GY	Self-adhesive	Grey	.5" x .14"	Flat Round	24	5.62
1421T3	Self-adhesive	Black	.5" x .23"	Square	24	7.76
1421T4	Self-adhesive	Black	.81" x .30"	Square	24	12.34
1421T5BK	Self-adhesive	Black	.44" x .20"	Hemisphere	24	4.99
1421T5CL	Self-adhesive	Clear	.44" x .20"	Hemisphere	24	4.99
1421T6CL	Self-adhesive	Clear	.31" x .09"	Flat Round	24	4.63
1421T7	Screw-on	Black	.75" x .5"	Round	24	29.96
1421T8BK	Self-adhesive	Black	.47" x .12"	Square	24	4.99
1421T9BK	Self-adhesive	Black	.88" x .40"	Round	24	29.96



CABLE BRACKETS

Cable brackets are used to take up the slack in power and other cables and to safely clamp and retain cable plugs where required. The two brackets can be mounted at any desired distance apart, inside or outside the case.

M795 PLASTIC CABLE BRACKETS

Grey RAL7001 plastic brackets with spring elements. Mounts with two 3mm plastic studs and Pal nuts on 40mm spacing. Sold in pairs. 4.8" (122mm) overall length.

M795-2 STEEL CABLE BRACKETS

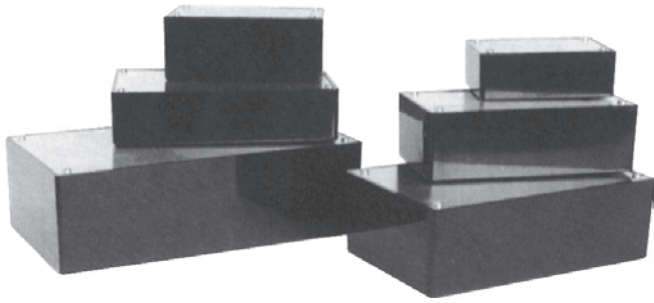
Zinc-plated steel brackets with spring elements. Mounts using two 3.2mm mounting holes on 40mm spacing (mounting hardware not included). Sold in pairs. 5" (126mm) overall length.

Cat. No.	Description	Net Price
CABLE BRACKETS		
M795	Grey plastic brackets (per pair)	\$7.12
M795-2	Zinc-plated steel brackets (per pair)	10.00

HARDWARE

Cat. No.	Replacement & Accessory Screws	Qty. per Pkg.	Screw Size	Net Price
1421J6	Self tapping for most metal case series	6	6-32 philips, nickel plated	\$4.33
1551ATS100	Self tapping type for 1551 series	100	#2 x 3/16" nickel plated	6.83
1590MS100	Machine type for 1590 (except L, M & R) series	100	6-32 x 1/2" nickel plated	5.20
1590MS50BK	Black machine type for 1590 series	50	6-32 x 1/2"	5.20
1590MS50GY	Grey machine type for 1590 series	50	6-32 x 1/2"	5.20
1591MS100	Machine type for 1591 & 1598 series	100	M3 - 0.5 x 10 mm	5.20
1591TS100	Self tapping type for 1591 styrene and 1551 series	100	#4 x 0.5" nickel plated	5.20
1591TS100BK	Black self tapping type for 1591 styrene and 1551 series	100	#4 x 0.5"	5.20
1593MS100	Self tapping, oval head for 1593 series	100	#4 x 0.625" (15.9 mm)	5.20
1594MS100	Machine type for 1594, 1599B, and 1592 series	100	M3 - 0.5 x 18 mm	4.32
1594TS100	Self tapping for 1594 & 1599ES styrene series	100	#4 x 25.4 mm (1")	4.32
1594WMS100	Machine type for 1594 watertight series & 1599E	100	M3 - 0.5 x 25 mm	4.32
1595MS100	Machine type for 1595 series	100	M3 - 0.5 x 8 mm	4.32
1598ATS100	Screws for stand-off bosses in 1595 and 1598 series	100	#6 x 1/4" (6.4 mm)	4.32
1598TS100	Self tapping for 1598 styrene series	100	#4 x 5/8"	4.32
1599BTS100	Self tapping for 1599BS styrene series	100	#4 x 3/4"	4.32
1599HMS100	Machine type for 1599H series	100	M3 - 0.5 x 28 mm	4.32
1599HTS100	Self tapping for 1599HS styrene series	100	#4 x 1 1/16"	4.32

Continued on next page...

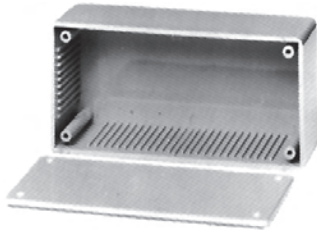


PLASTIC CASES

Black plastic cases w/ aluminum cover plates.

Cat. No.	Dimensions	Net Price
53-520-0	82L x 54W x 31H*	\$3.25
53-522-0	83L x 54W x 30H	3.42

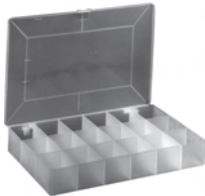
*Plastic cover.



PLASTIC CASES

Grey ABS plastic w/ ABS plastic covers.

Cat. No.	Dimensions	Net Price
53-541-0	99L x 49W x 40H	\$2.83
53-551-0	125L x 60W x 40H	4.00
53-571-0	145L x 85W x 50H	5.42
53-581-0	180L x 110W x 60H	6.83



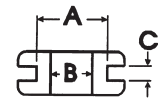
Cat. No.	Description	Net Price
53-918-0	275Lx182Wx40H polypropylene box with 18 compartments	\$4.97



KNOBS

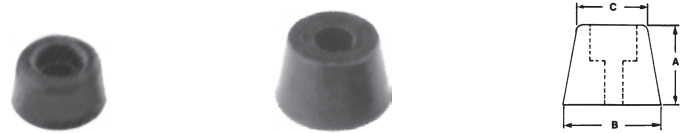
All knobs have brass bushings with set screw.

Cat. No.	A	B	C	Shaft	Net Price
54-122-0	15mm	15mm	12mm	6.35mm	\$1.25
54-217-0	18mm	23mm	15mm	6.35mm	.67
54-218-0	27mm	33mm	17mm	6.35mm	1.05
54-227-0	25mm	31mm	15mm	6.35mm	1.08
54-228-0	31mm	37mm	15mm	6.35mm	1.35
54-232-0	16mm	20mm	12mm	6.35mm	.77
54-234-0	24mm	27mm	16mm	6.35mm	.92
54-278-0	23mm	37mm	15mm	6.35mm	1.50
54-279-0	23mm	37mm	15mm	6.35mm	1.50
54-374-0	30mm	Pointer knob		6.35mm	.60



RUBBER GROMMETS

Cat. No.	A	B	C	Net Price Per 100
54-811-0	5/16"	3/16"	1/16"	\$8.83
54-814-0	3/8"	1/4"	1/16"	9.70
54-817-0	1/2"	3/8"	1/16"	9.70



RUBBER FEET

Complete w/ mounting hardware.

Cat. No.	Pkge.	A	B	C	Net Price Per 100
54-865-0	-8	7mm	19mm	15mm	\$41.67
54-870-0	-8	12mm	20mm	16mm	43.33
54-875-0	-4	16mm	25mm	21mm	91.67



ADHESIVE RUBBER FEET

Cat. No.	Size	Thickness	Net Price Per 100
54-880-0	1/2" round	.232"	\$13.67
54-885-0	1/2" square	.232"	13.67