

## WEIDMÜLLER SCREWDRIVERS

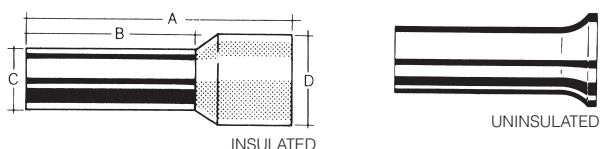
Parallel-blade screwdrivers should be selected for tightening the clamping screws in Weidmüller terminals. Tapered blade screwdrivers may cause fractures in the molding when tightening the clamping screw. These screwdrivers have a plane-parallel blade, DIN 7437, recommended for use with Weidmüller terminal blocks.

Cat. No.	Type	For Use With Blocks	A mm(In.)	B mm(In.)	C mm(In.)	Net Price
900832	SD1	SAK/WDU 2.5	0.5(0.20)	3.0(0.12)	75(2.96)	\$8.80
900834	SD3	SAK/WDU 10-16	0.8(0.31)	4.0(0.16)	100(3.94)	10.90

## FERRULES

Ferrules simplify insertion of stranded wires that are repeatedly connected and disconnected. Ferrules available for wire sizes AWG 20-1. Insulation sleeves are temperature resistant to 120°C (250°F).

Use crimping tool PZ 4 (901250) for H 0.5 to H 4.

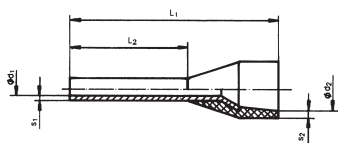


### INSULATED FERRULES

Cat. No.	Type	AWG	Strip Length	Colour	Dimensions in mm				Net Price Per 100
					A	B	C	D	
40950	H 0.5/12	26-22	8mm	orange	12.8	6.0	1.3	3.0	\$6.80
69070	H 0.5/14	26-22	10mm	orange	14.0	8.0	1.3	3.0	6.80
40960	H 0.75/12	20	8mm	white	12.8	6.0	1.5	3.2	6.80
46290	H 0.75/14	20	11mm	white	14.6	8.2	1.5	3.2	6.80
40970	H 1.0/12	18	8mm	yellow	12.8	6.0	1.7	3.5	8.40
46300	H 1.0/14	18	11mm	yellow	14.6	8.2	1.7	3.5	8.40
46310	H 1.5/14	16	11mm	red	14.6	8.2	2.0	4.0	8.40
63510	H 1.5/16	16	13mm	red	16.6	10.0	2.0	4.0	14.00
56560	H 1.5/24	16	21mm	red	24.4	18.0	2.0	4.0	14.10
133310	H 2.5/14	14	11mm	blue	14.2	8.2	2.6	4.2	8.50
901918	H 2.5/25	14	21mm	blue	25.0	18.0	2.6	4.2	16.90

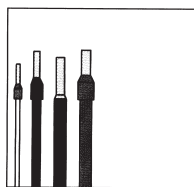
### UNINSULATED FERRULES

Cat. No.	Type	AWG	Strip Length	Length in mm	Net Price Per 100
28260	H 0.5	26-22	6mm	6.0	\$2.40
28270	H 0.75	20	6mm	6.0	2.40
54250	H 0.75	20	10mm	10.0	3.50
37260	H 1.0	18	6mm	6.0	3.30
28280	H 1.0	18	10mm	10.0	3.30
37270	H 1.5	16	7mm	7.0	2.80
18650	H 1.5	16	10mm	10.0	3.30
18610	H 2.5	14	12mm	12.0	4.40
19190	H 6	10	12mm	12.0	6.30
28290	H 10	8	12mm	12.0	9.80

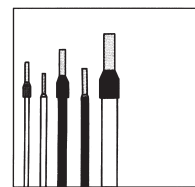


### FERRULES WITH PLASTIC INSULATING COLLARS

Cat. No.	Type	Colour	AWG	Dimensions		Net Price Per 100
				L1	L2	
902574	H 0.25/10	Light Blue	24	10	6	\$7.10
902605	H 0.25/10 (strip pack)	Light Blue	24	10	6	7.70
902587	H 0.5/16	Orange	20	16	10	6.10
902586	H 0.75/16	White	18	16	10	7.10
902595	H 1/16	Yellow	17	16	10	9.20
901917	H 2.5/18D	Blue	14	18	12	16.00
901918	H 2.5/24D	Blue	14	24	18	16.90
901920	H 4/20D	Gray	12	20	20	18.60
901921	H 4/26D	Gray	12	26	18	19.30



901250



901146

## PZ4 CRIMP TOOL

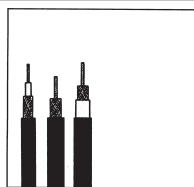
Crimps ferrules type "Weidmüller" with and without plastic collars as well as others according to DIN from 0.5...4 mm<sup>2</sup>. Only one die for entire wire range. Optimal lever transmission for minimal actuating force. Ergonomically designed handles for effortless operation. Ratchet for precise crimping. Ratchet release option in case of incorrect operation. Ferrule insertion from the side. Metal parts made of hardened steel.

Cat. No.	Type	Length	Net Price
901250	PZ4	200mm	\$192.60

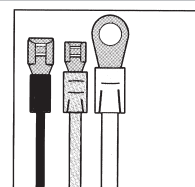
## PZ 6/5 CRIMP TOOLS

Crimps ferrules type "Weidmüller" with and without plastic collars as well as others according to DIN from 0.5...6 mm<sup>2</sup>. Crimp conforms to EN 50 027. Five crimping stations for the rated conductor cross-sections. Ferrule insertion from the side. Ergonomically designed handles for effortless operation. Metal parts made of hardened steel. Ratchet for precise crimping. Ratchet release option in case of incorrect operation.

Cat. No.	Type	Length	Net Price
901146	PZ 6/5	200mm	\$237.50



903050



903201

## CST STRIPPING TOOL

Strips coaxial cables from 2.5...8 mm ø. One tool for two and three level stripping simultaneously. Adjustable and interchangeable screw holder for fast resetting to other cable types. Interchangeable cassettes with standard blade distances. Two-sided blade cassettes for prolonged use. Different colored cassettes for various applications. Ergonomically designed for effortless operation.

Cat. No.	Type	Length	Net Price
903050	CST	100mm	\$44.20

### BLADE CASSETTE FOR CST

Cat. No.	Colour	Stripping Dim.
903201	Brown	7.5/3.5mm = C/B

NOTE: Contact your Electro Sonic sales representative for pricing.

## CT 16 CRIMPING TOOL

Crimps in the cross-section range 0.5...6 mm<sup>2</sup> PVC and polyamide insulated connectors according to DIN such as: Cable lugs. Pin-type cable lugs. Parallel and serial connectors. Connectors. Adjustable locator for exact positioning of crimping parts. Three crimping stations for the rated conductor cross-sections with color coding. Precision crimping die for precise crimping. Crimp with control mark. Conical insulation profiles for additional anti-kink protection and strain relief. Ergonomically designed handles for effortless operation. Metal parts made of hardened steel. Ratchet for precise crimping. Ratchet release option in case of incorrect operation.

Cat. No.	Type	Length	Weight	Net Price
900612	CT 16	260mm	730m	\$222.20



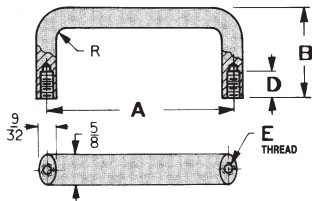
## STRIPAX

This tool cuts and strips PVC wire from 20 to 12 AWG. Settings may be adjusted for insulation thickness and strip length. Use the Mini Stripax for wire AWG 18 and smaller.

Cat. No.	Description
900500	Stripax
905403	Stripax Blade Set

NOTE: Contact your Electro Sonic sales representative for pricing.

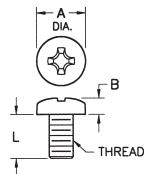
Cat. No.	Dimensions						Net Price
	A	B	E	D	R	C	
<b>ALUMINUM (CONTINUED)</b>							
512	5.000	1.500	8-32	.562	.250	.250	\$4.95
518	5.000	1.750	8-32	.562	.250	.250	4.95
513	5.500	1.500	8-32	.562	.250	.250	5.09
514	6.000	1.500	8-32	.562	.250	.250	5.21
519	6.000	1.750	8-32	.562	.250	.250	5.21
7175	3.000	1.500	10-32	.562	.312	.312	5.21
7176	4.000	1.500	10-32	.562	.312	.312	5.49
523	4.000	1.750	10-32	.562	.312	.312	5.49
520	4.500	1.500	10-32	.562	.312	.312	5.49
524	4.500	1.750	10-32	.562	.312	.312	5.49
7177	4.562	1.500	10-32	.562	.312	.312	5.57
521	5.000	1.500	10-32	.562	.312	.312	5.57
525	5.000	1.750	10-32	.562	.312	.312	5.57
522	5.500	1.500	10-32	.562	.312	.312	5.70
7178	6.000	1.500	10-32	.562	.312	.312	5.72
526	6.000	1.750	10-32	.562	.312	.312	5.85
7179	6.437	1.750	10-32	.562	.312	.312	5.85
7180	4.000	1.375	10-32	.375	.375	.375	5.21
7181	6.000	1.375	10-32	.375	.375	.375	5.85



### OVAL INSTRUMENTATION HANDLES (.625 x .281)

**MATERIALS:** Brass: Nickel Plate. Aluminum: Black Anodize.

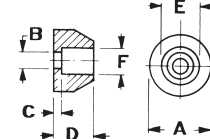
Cat. No.	Dimensions					Net Price
	A	B	E	D	R	
<b>BRASS</b>						
7156	4.000	1.750	10-32	.500	.500	\$24.14
534	4.000	2.000	10-32	.500	.500	24.63
530	4.500	1.750	10-32	.500	.500	25.17
535	4.500	2.000	10-32	.500	.500	25.60
531	5.000	1.750	10-32	.500	.500	26.16
536	5.000	2.000	10-32	.500	.500	26.52
532	5.500	1.750	10-32	.500	.500	27.16
537	5.500	2.000	10-32	.500	.500	26.80
7157	6.000	1.375	10-32	.375	.500	26.70
533	6.000	1.750	10-32	.500	.500	28.11
538	6.000	2.000	10-32	.500	.500	28.51
7158	6.437	1.750	10-32	.500	.500	29.24
<b>ALUMINUM</b>						
7186	4.000	1.750	10-32	.500	.500	8.12
544	4.000	2.000	10-32	.500	.500	8.59
540	4.500	1.750	10-32	.500	.500	8.55
545	4.500	2.000	10-32	.500	.500	8.89
541	5.000	1.750	10-32	.500	.500	8.89
546	5.000	2.000	10-32	.500	.500	9.22
542	5.500	1.750	10-32	.500	.500	9.18
547	5.500	2.000	10-32	.500	.500	9.47
7187	6.000	1.375	10-32	.375	.500	9.44
543	6.000	1.750	10-32	.500	.500	9.47
548	6.000	2.000	10-32	.500	.500	9.79
7188	6.437	1.750	10-32	.500	.500	9.79



### HANDLE MOUNTING SCREWS

Phillips drive pan head machine screws. **MATERIAL:** Stainless Steel.

Cat. No.	Length "L"	Thread	A	B	Drive Size	Net Price Per 1000
9900	1/4 (.250)	4-40	.212	.065	1	\$37.17
9901	3/8 (.375)					37.17
9902	1/2 (.500)					44.61
9903	1/4 (.250)	6-32	.263	.092	2	\$52.02
9904	3/8 (.375)					49.09
9905	1/2 (.500)					52.02
9907	1/2 (.500)					74.33
9908	3/4 (.750)					107.76
9909	3/8 (.375)	10-32	.365	.128	2	\$107.76
9910	1/2 (.500)					110.25
9911	3/4 (.750)					196.95



### FERRULES FOR ROUND HANDLES

To protect and support panel surface.

Cat. No.	Dimensions							Net Price
	Dia.	A	B	C	D	E	F	
<b>BRASS</b>								
7162	.156	.250	.120	.047	.125	.200	.161	\$ .51
9120	.187	.312	.120	.062	.125	.265	.203	.78
9121	.187	.312	.144	.062	.125	.265	.203	.78
7163	.250	.375	.170	.062	.187	.320	.260	.60
7164	.312	.562	.196	.062	.250	.406	.320	.89
<b>ALUMINUM</b>								
7192	.156	.250	.120	.047	.125	.200	.161	.77
9122	.187	.312	.120	.062	.125	.265	.203	1.13
9123	.187	.312	.144	.062	.125	.265	.203	1.13
7193	.250	.375	.170	.062	.187	.320	.260	.89
7194	.312	.562	.196	.062	.250	.406	.320	.91



MINIATURE



COMPACT

### SURFACE MOUNT TEST POINTS ON TAPE AND REEL

**MINIATURE**  
**FEATURES:** Ultra low profile ideally suited for advanced surface mount printed circuit board applications. Designed for long life and durability. Manufactured using flat wire to provide a large mounting surface area. Ideal for use with miniature probes, clips, and hooks. Efficient, safe, board level testing. **MATERIAL:** Contact Material: .010 Phosphor Bronze. Contact Finish: Tin Lead. Tape material: 8mm wide; 4mm pitch; conductive polycarbonate carrier tape meets ANSI/EIA-481 standard.

**COMPACT**  
**FEATURES:** Unique design provides exceptional strength and durability. Simplifies testing on dense SMT circuit boards. Ideal for use with most probes, clips, and hooks. Efficient, safe, board level testing. **MATERIAL:** Contact Material: .015 Phosphor Bronze. Contact Finish: Tin Lead. Tape material: 12mm wide; 4mm pitch; conductive polycarbonate carrier tape meets ANSI/EIA-481 standard.

Cat. No.	Reel Size (Inches)	Pieces Per Reel	Net Price Per Reel
<b>MINIATURE</b>			
5015	7	1000	\$ .28
5017	13	5000	.28
<b>COMPACT</b>			
5016	7	1000	.26
5018	13	5000	.26