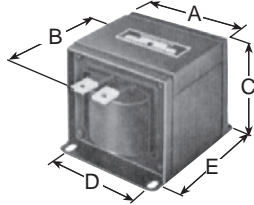


Reactors/Filter Chokes

• **Heavy Current Series** — for high current 5-150 Amps (usually low voltage), power supplies, where low filter voltage drop and good regulation is required — see the **195 Series**.

• **Medium Current Series** — for medium current 1-10 Amps (usually high voltage), power supplies requiring smaller size — see the **154 — 159Z Series**.

• **Low Current Series** — low current .008-3 Amps (usually high voltage & high inductance) power supplies requiring open or shielded units — see the **153 — 193 Series**.



REACTORS FILTER CHOKES 195 SERIES REACTORS HEAVY CURRENT—0.5 TO 100 MILLIHENRY—5 TO 100 AMPS

- For OEM or replacement use in D.C. power supplies, battery chargers, etc.
- Economical open core & coil, 4 slot mounting, for inside other enclosures.
- Tolerance of 15% on both inductance and resistance
- Inductances measured at rated D.C. current
- Connections are made to a screw terminal or heavy copper tabs with holes
- Perfect for high current power supply filtering

Cat. No.	Dimensions				
	A	B±	C	D	E
195B150	5.25	5.50	4.47	4.38	4.13
195C20	3.00	3.06	2.50	2.50	2.25
195C30	3.75	3.85	3.13	3.13	2.50
195C50	4.50	5.25	3.75	3.75	3.50
195C75	5.25	6.00	4.47	4.38	4.63
195C100	5.25	6.50	4.47	4.38	5.13
195E20	3.75	4.20	3.13	3.13	2.75
195E30	4.50	5.25	3.75	3.75	3.50
195E50	5.25	6.00	4.47	4.38	4.63
195E75	6.00	6.63	5.16	5.00	4.88
195E100	9.00	9.75	7.50	7.00	6.00
195G10	3.75	3.60	3.13	3.13	2.25
195G20	4.50	4.75	3.75	3.75	3.00
195G30	5.25	5.00	4.47	4.38	3.63
195G50	7.50	6.50	6.25	6.00	4.50
195G75	9.00	9.50	7.76	7.00	7.00
195J10	3.75	4.35	3.13	3.13	3.00
195J20	5.25	5.00	4.47	4.38	3.63
195J30	6.00	7.50	5.00	5.00	5.88
195J50	9.00	9.75	7.50	7.00	6.25
195M10	4.50	4.75	3.75	3.75	3.00
195M20	6.00	7.50	5.00	5.00	5.88
195M30	6.00	7.63	5.16	5.00	5.88
195P5	3.75	4.20	3.13	3.13	2.75
195P10	4.50	5.25	3.75	3.75	3.50
195P20	5.25	6.91	4.47	4.38	5.54
195R10	5.25	5.50	4.47	4.38	4.13
195R20	9.00	8.25	7.50	7.00	5.75
195T5	4.50	5.25	3.75	3.75	3.50
195T10	7.50	6.00	6.25	6.00	4.25

195 SERIES

Cat. No.	Inductance Millihenries	Current D.C. Amps	Resis. Ohms	INS CL	Slot	Wt. Lb.	Net Price
----------	-------------------------	-------------------	-------------	--------	------	---------	-----------

REACTORS

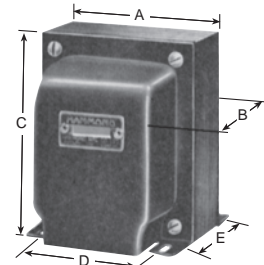
195 B150	0.5	150	.0018	B	.28×.56	26.0	\$436.36
195 C20	1.0	20	.013	A	.20×.38	3.0	49.67
195 C30	1.0	30	.009	A	.20×.38	6.0	67.02
195 C50	1.0	50	.005	A	.20×.38	14.5	140.82
195 C75	1.0	75	.0040	A	.28×.56	23.0	249.87
195 C100	1.0	100	.0036	B	.28×.56	26.0	307.91
195 E20	2.5	20	.022	A	.20×.38	6.5	62.22
195 E30	2.5	30	.013	A	.20×.38	12.5	91.16
195 E50	2.5	50	.008	A	.28×.56	23.5	353.55
195 E75	2.5	75	.008	B	.28×.56	32.5	212.73
195 E100	2.5	100	.006	B	.44×.75	88.0	605.45
195 G10	5	10	.040	A	.20×.38	5.5	57.24
195 G20	5	20	.03	A	.20×.38	10.5	79.89
195 G30	5	30	.023	A	.28×.56	16.0	260.31
195 G50	5	50	.021	B	.38×.63	38.0	320.00

±B dimension is approximate maximum over coil or copper tabs.

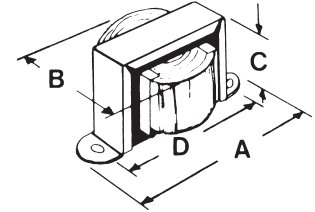
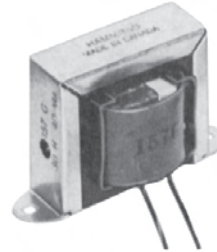
195 SERIES (CONTINUED)

Cat. No.	Inductance Millihenries	Current D.C. Amps	Resis. Ohms	INS CL	Slot	Wt. Lb.	Net Price
195 G75	5	75	.01	B	.44×.75	87.0	\$674.65
195 J10	10	10	.07	A	.20×.38	8.0	71.02
195 J20	10	20	.045	A	.28×.56	17.5	108.78
195 J30	10	30	.037	A	.31×.50	36.0	256.73
195 J50	10	50	.023	B	.44×.75	79.0	638.18
195 M10	20	10	.013	A	.20×.38	10.2	88.22
195 M20	20	20	.075	A	.31×.50	36.0	324.05
195 M30	20	30	.045	B	.28×.56	41.0	418.18
195 P5	30	5	.23	A	.28×.38	6.5	54.44
195 P10	30	10	.16	A	.20×.38	16.0	88.89
195 P20	30	20	.13	B	.28×.56	28.0	340.00
195 R10	50	10	.165	A	.28×.56	26.0	135.42
195 R20	50	20	.13	B	.44×.75	72.0	629.09
195 T5	100	5	.64	A	.20×.38	14.0	76.36
195 T10	100	10	.42	B	.38×.63	35.0	330.91

±B dimension is approximate maximum over coil or copper tabs.



TYPE X MOUNTING



DIMENSIONAL OUTLINE
HORIZONTAL BRACKET

REACTORS OR FILTER CHOKES 150/190 SERIES

- Economical "open bracket" or "Type X" mounting.
- Coils are vacuum varnish impregnated for long life.
- Minimum 5" long leads.
- Tolerance ±15% on inductance and resistance.
- Units will exhibit less inductance at slightly higher currents or more at lower currents.
- Inductances are measured with rated DC current flowing.
- All dimensions in inches ±.06", except "B" which is maximum.

DIMENSIONS

Cat. No.	Dimensions				
	A	B	C	D	E
153 E	1.63	0.88	0.81	1.38	—
153 H	1.63	0.88	0.81	1.38	—
153 L	1.63	0.88	0.81	1.38	—
153 M	1.63	0.88	0.81	1.38	—
154 E	2.06	1.25	1.19	1.75	—
154 G	2.06	1.25	1.19	1.75	—
154 H	2.06	1.25	1.19	1.75	—
154 M	2.06	1.25	1.19	1.75	—
155 C	2.38	1.38	1.38	2.00	—
155 G	2.38	1.38	1.38	2.00	—
155 H	2.38	1.38	1.38	2.00	—
155 J	2.38	1.38	1.38	2.00	—
156 C	2.81	1.50	1.69	2.38	—
156 G	2.81	1.50	1.69	2.38	—
156 L	2.81	1.50	1.69	2.38	—
156 M	2.81	1.50	1.69	2.38	—
156 R	2.81	1.50	1.69	2.38	—
157 G	3.25	1.75	2.00	2.81	—
157 J	3.25	1.75	2.00	2.81	—
157 L	3.25	1.75	2.00	2.81	—
157 M	3.25	1.75	2.00	2.81	—
157 Q	3.25	1.75	2.00	2.81	—
157 R	3.25	1.75	2.00	2.81	—
158 L	3.25	2.00	2.00	2.81	—

Continued on next page...

Hammond Reactors/Filter Chokes

DIMENSIONS

Cat. No.	Dimensions				
	A	B	C	D	E
158M	3.25	2.00	2.00	2.81	—
158Q	3.25	2.00	2.00	2.81	—
158S	3.25	2.00	2.00	2.81	—
158T	3.25	2.00	2.00	2.81	—
159M	4.03	2.25	2.63	3.56	—
159P	4.03	2.25	2.63	3.56	—
159Q	4.03	2.25	2.63	3.56	—
159S	4.03	2.25	2.63	3.56	—
159T	4.03	2.25	2.63	3.56	—
159V	4.03	2.25	2.63	3.56	—
159Y	4.03	2.25	2.63	3.56	—
154B	2.06	1.25	1.19	1.75	—
155B	2.38	1.38	1.38	2.00	—
156B	2.81	1.50	1.69	2.38	—
157D	3.25	1.75	2.00	2.81	—
159ZA	4.03	2.25	2.63	3.56	—
159ZC	4.03	2.25	2.63	3.56	—
159ZE	4.03	2.25	2.63	3.56	—
159ZG	4.03	2.25	2.63	3.56	—
159ZJ	4.03	2.25	2.63	3.56	—
159ZL	4.03	2.25	2.63	3.56	—
193B	2.50	2.75	3.06	2.00	1.69
193C	2.50	3.25	3.06	2.00	2.19
193D	2.50	3.25	3.06	2.00	2.19
193G	3.13	3.25	3.81	2.50	1.94
193H	2.50	2.75	3.06	2.00	1.69
193J	3.13	3.75	3.81	2.50	2.44
193K	2.50	3.25	3.06	2.00	2.19
193L	3.13	3.75	3.81	2.50	2.44
193M	3.75	4.50	4.56	3.00	3.31
193N	3.13	3.75	3.81	2.50	2.44
193P	3.75	4.50	4.56	3.00	3.31
193Q	3.75	5.50	4.56	3.00	4.31
193R	3.13	3.50	3.81	2.50	2.19
193S	3.75	4.00	4.56	3.00	2.81
193T	2.50	2.75	3.06	2.00	1.69
193U	3.13	4.25	3.81	2.50	2.94
193V	3.75	4.50	4.56	3.00	3.31

150/190 SERIES FILTER CHOKES

Cat. No.	Induc. Henrys	D.C. Current Ma.	Resist. Ohms	Max. Op. Volts D.C.	Wt. Lb.	Net Price
OPEN BRACKET						
153E	7.0	25	770	300	.10	\$29.29
153H	2.2	50	305	300	.10	19.42
153L	0.9	75	125	300	.10	28.84
153M	0.6	100	86	300	.10	28.56
154E	20	20	1666	300	.25	13.71
154G	9	40	700	300	.25	13.09
154H	4	50	300	300	.25	13.04
154M	2	100	175	300	.25	12.45
155C	60	8	2750	400	.30	14.65
155G	7	40	340	400	.30	14.87
155H	5	50	270	400	.30	15.16
155J	15	30	1026	400	.30	15.64
156C	150	8	3700	400	.50	15.96
156G	9	40	300	400	.50	14.65
156L	5	75	135	400	.50	15.16
156M	3	100	86	400	.50	14.96
156R	1.5	200	56	400	.50	15.11
157G	30	40	595	400	1.0	28.27
157J	10	65	205	400	1.0	27.13
157L	14	75	429	400	1.0	28.09
157M	8	100	259	400	1.0	27.64
157Q	3.5	150	98	400	1.0	26.95
157R	2	200	57	400	1.0	26.76
158L	15	75	411	400	1.25	24.68
158M	10	100	262	400	1.25	24.47
158Q	5	150	105	400	1.25	24.78
158S	1.5	250	60	400	1.50	24.20
158T	1.0	300	40	400	1.50	23.55
159M	15	100	256	500	2.25	31.42
159P	10	125	155	500	2.25	31.42
159Q	7	150	100	500	2.25	31.05
159S	4	225	65	500	2.25	30.55
159T	2.5	300	43	500	2.25	30.60
159V	1.5	500	27	500	2.25	30.85
159Y	0.6	750	11	500	2.25	30.85

HIGH CURRENT BRACKET MOUNTED CHOKES

154B	3mH	1.5Amp	0.14	300	.25	12.25
155B	6mH	2Amp	0.3	400	.30	13.18
156B	1.5mH	5Amp	0.07	400	.50	15.31
157D	1mH	10Amp	0.038	400	1.0	19.38
159ZA	300mH	1Amp	6.0	500	2.50	30.27
159ZC	60mH	2Amp	0.7	500	2.50	30.35
159ZE	28mH	3Amp	0.43	500	2.75	30.18

150/190 SERIES FILTER CHOKES

Cat. No.	Induc. Henrys	D.C. Current Ma.	Resist. Ohms	Max. Op. Volts D.C.	Wt. Lb.	Net Price
HIGH CURRENT BRACKET MOUNTED CHOKES (CONTINUED)						
159ZG	15 mH	4 Amp	0.25	500	2.75	\$29.93
159ZJ	10 mH	5 Amp	0.16	500	2.75	29.85
159ZL	2.5 mH	10 Amp	0.044	500	2.75	30.40
SHIELDED TYPE X MOUNTING						
193B	12	100	155	600	2.5	36.56
193C	20	100	181	600	3.25	44.20
193D	8	150	75	600	3.25	44.16
193G	10	150	102	800	4.25	65.09
193H	5	200	65	600	2.5	36.58
193J	10	200	82	800	5.5	60.93
193K	2.6	300	21	800	3.25	53.05
193L	5	300	57	800	5.5	45.31
193M	10	300	63	800	10.5	74.49
193N	3	500	35	600	5.0	61.91
193P	5	500	26	800	10.75	106.13
193Q	10	500	53	1000	21.0	99.11
193R	.3	1000	3.5	1000	4.5	63.78
193S	1.0	1000	5.75	1000	8.0	85.25
193T	.05	2000	0.7	300	2.5	35.42
193U	.2	2000	1.7	300	6.0	59.33
193V	.15	3000	1.0	300	9.0	74.33

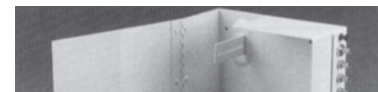


**1537 SERIES
HIGH CURRENT CHOKES**
FROM 10 uH TO 100 uH: 1.25 TO 20 AMPS

FEATURES:

- Ideally suited for power supply filtering.
- Large ferrite core extends saturation point.
- 1.5" long leads (+/-0.1")
- Core provides optimum frequency range of .01-2 Mhz.
- Coils covered with vinyl shrink sleeve.

Cat. No.	Inductance uH ±5%	Min. Q	D.C. Res. Ohms	Current Rating Amps	Outside Coil Dia. Inches	Lead Dia. Gauge	Net Price
1 KHz TEST FREQUENCY							
1537E	10	4.5	.006	20.0	.63	14	\$5.49
1537F	20	6.5	.013	12.5	.60	16	5.05
1537G	30	5.3	.024	8.0	.58	18	5.09
1537H	40	5.2	.039	5.0	.57	20	4.98
1537J	50	3.4	.064	3.2	.56	20	4.95
1537K	75	3.2	.128	2.0	.54	20	4.95
1537L	100	10.5	.050	8.0	.71	18	5.13
1537M	250	12.0	.114	5.0	.69	18	5.40
1537N	500	11.6	.260	3.2	.65	20	5.13
1537P	750	10.0	.465	2.0	.61	20	5.13
1537R	1000	7.4	.830	1.25	.59	20	10.00



**1536 SERIES
HEAVY DUTY HASH CHOKES**

FEATURES:

- 3.35 to 1000 uH: 1 to 20 Amps.
- Moulded powdered iron form.
- High inductance and high current.
- 1.25" long leads (+/-0.1")

Cat. No.	uH ±20%	Ohms	Freq. MHz.	Amps	Size		Net Price
					Dia.	Lgth.	
HEAVY DUTY HASH CHOKES							
1536D	3.35	0.010	45	20	0.53	1.31	\$7.33
1536E	4.9	0.016	42	15	0.50	1.25	7.24
1536F	8.8	0.021	28	10	0.50	1.25	7.22
1536G	4.0	0.012	24.3	8	0.31	0.91	3.95
1536H	40.0	0.082	10.4	3	0.31	1.25	4.16
1536S	68.0	0.054	5.7	5	0.53	1.25	3.91
1536T	100.0	0.216	4.1	2	0.31	1.25	3.78
1536TA*	100.0	0.55	—	1	0.80	1.10	16.91
1536W	125.0	0.08	2.65	3.5	0.50	1.25	4.31
1536X	250.0	0.17	1.5	2.5	0.43	1.25	3.95
1536Y	500.0	0.26	1.17	2.0	0.56	1.25	4.04
1536Z	1000.0	0.55	—	1.0	0.50	1.03	4.05

*Dual choke—all measurements are per section.