



HD15 (M)



HD15 (F)

## VGA MONITOR CABLES

These cables use 28 AWG 14 conductor wire. Heavy duty mylar foil shield. Molded connectors with thumb screws. VGA cable HD15 (M)/HD15 (F) 6'.

Cat. No.	Net Price
45-0435-0000	\$3.97



45-0578-0000



45-0579-0000

## MOUSE ADAPTERS

These adapters make it possible to connect a serial mouse to your IBM PS/2® computer.

Cat. No.	Description	Net Price
45-0578-0000	Serial mouse to PS/2, DB9 (M)/MD6 (M)	\$3.53
45-0579-0000	PS/2 Mouse to IBM® AT, DB9 (F)/MD6 (F)	3.53



45-0400-0000



45-0401-0000

## POWER CORDS AND ADAPTER CABLES

These cables are used as replacements for computer, printers, and other small office/home office devices with a current draw of less than 7A @ 125 VAC. Cords are made with 18 AWG stranded U/L listed cable, and molded ends.

Cat. No.	Description	Net Price
45-0400-0000	Computer power cord, AC (M)/molded (F) 6'	\$3.40
45-0401-0000	Power adapter shrouded (M)/AC (F) 1'	3.09



45-0570-0000



45-0571-0000



45-0573-0000

## KEYBOARD ADAPTERS

Cat. No.	Description	Net Price
45-0570-0000	Keyboard adapter D5 (F)/MD6 (M) 6"	\$2.90
45-0573-0000	Keyboard adapter D5 (F)/MD6 (M)	3.95
45-0571-0000	Keyboard adapter D5 (F)/MD6 (F) 6"	2.90



45-2510-0000



45-2511-0000

## LOW PROFILE PORT ADAPTERS

These connectors are used to change the I/O (input/output) ports from one type of connector to another. They are most commonly used when hooking up peripheral devices such as a monitor or printer to your PC.

Cat. No.	Description	Net Price
45-2510-0000	Low profile serial adapter, DB9 (M) / DB25 (F)	\$3.45
45-2511-0000	Low profile serial adapter, DB9 (F) / DB25 (M)	3.24
45-2509-0000	Low profile serial adapter, DB9 (F) / DB25 (F)	3.45
45-2512-0000	Low profile serial adapter, DB9 (M) / DB25 (M)	3.45



## IBM COMPATIBLE PORT ADAPTOR

Eliminates need for special printer cable. Adaptor plugs into "Centronics-Type" 36-Pin connector on most parallel printers and converts the connector to a standard female 25-Pin "D".

Cat. No.	Net Price
45-0598-0000	\$4.70



## NULL MODEM CABLES

The cables allow you to connect two DCE or DTE devices in order to communicate between them. Null modem cable DB9 (F)/DB9 (F) 6'.

Cat. No.	Net Price
45-0389-0000	\$4.91



## DB-9 GENDER CHANGERS & ADAPTORS

Cat. No.	Description	Net Price
45-0510-0000	DB-9, Male/Male	\$3.13
45-0515-0000	DB-9, Female/Female	2.61



45-0560-0000



45-0561-0000

## DB-15 GENDER CHANGERS

Cat. No.	Description	Net Price
45-0560-0000	High Density DB-15 Male/Male	\$5.62
45-0561-0000	High Density DB-15 Female/Female	9.35



## LOW PROFILE GENDER CHANGERS

Ideal for use where a low-profile is needed in a permanent installation (only 0.7" deep at thickest point). Gold flashed contacts. Fully shielded.

Cat. No.	Description	Net Price
45-0517-0000	DB-9 Male/Male	\$3.13
45-0518-0000	DB-9 Female/Female	3.13
45-0519-0000	DB-9 Male/Female	3.24
45-0527-0000	DB-15 Male/Male	3.34
45-0528-0000	DB-15 Female/Female	3.86
45-0507-0000	DB-25 Male/Male	3.13
45-0508-0000	DB-25 Female/Female	3.21
45-0509-0000	DB-25 Male/Female, Slim	3.66



## TELCO ADAPTORS FOR DB-9 OR DB-25 PORTS

Allows use of low cost TELCO® (telephone) wire between computers and peripherals. Available in either DB-25 or DB-9 connectors on one end and 4, 6 or 8 contact Telco connectors on the other.

Cat. No.	Description	Net Price
45-5112-0000	DB-9 Female to 6 Conductor	\$2.61
45-5113-0000	DB-9 Female to 8 Conductor	2.61
45-5109-0000	DB-9 Male to 6 Conductor	2.61
45-5110-0000	DB-9 Male to 8 Conductor	2.61
45-0512-0000	DB-25 Female to 4 Conductor	3.11
45-5126-0000	DB-25 Female to 6 Conductor	2.51
45-5127-0000	DB-25 Female to 8 Conductor	2.84
45-5121-0000	DB-25 Male to 4 Conductor	2.36
45-5123-0000	DB-25 Male to 6 Conductor	2.84
45-5108-0000	Telco Adapter DB-9 Male to 4 Conductor	2.61
45-5111-0000	Telco Adapter DB-9 Female to 4 Conductor	2.61



## PORT RECONFIGURATION KITS

These RS232 jumper boxes have both male & female connectors mounted on a printed circuit board with pads for soldering connections and a bus area for tying lines together. A snap-on re-usable shell is provided to protect your connections and make the unit into a permanent adapter.

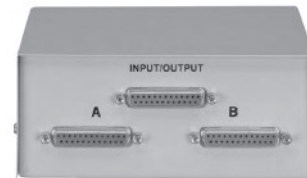
Cat. No.	Description	Net Price
45-0480-0000	DB25 (M) / (F) + Hardware	\$9.21



## STANDARD NULL MODEM

Standard DB-25 connectors each end, male to female. Fits in line to connect like devices, either DTE or DCE. This is the most commonly used circuit for the Null Modem Adaptors; see schematic for wiring.

Cat. No.	Description	Net Price
45-0582-0000	DB-25 Male/Female	\$3.55



## RS-232 DB-25 SWITCH

One I/O DB-25 Female connects to two (A/B). Cross Switch type has four DB-25 Female connectors, two configured as Input, two as Output.

Cat. No.	Net Price
64-2001-0000	\$13.48



45-1035-0000

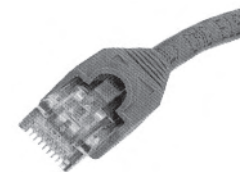


45-1060-0000

## STANDARD "D" CONNECTORS

For cable mounting or shell may be discarded for panel mounting. All contacts molded in place permanently. Hardware included; solder connection.

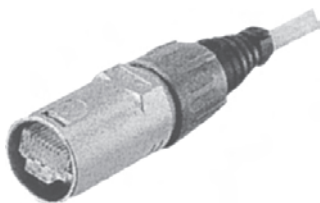
Cat. No.	Description	Net Price
45-1035-0000	DB9 Male	\$2.90
45-1036-0000	DB9 Female	2.90
45-1060-0000	DB25 Male	2.90
45-1061-0000	DB25 Female	2.90



## CAT 5E DATACOM PATCH AND JUMPER CABLES

Pre-made jumper cables are tested and certified to 350 MHz. All cables have snugless boots that join the connector to the cable and prevents disconnection due to accidental stresses. Connectors are plated to 50 micro-inches of gold. Cable is stranded Cat 5e (4 pair/24 AWG) UTP, meeting and tested to UL and CSA requirements.

Cat. No.	Description	Net Price
45-6860-00BU	3' snugless boot, blue	\$1.59
45-6867-00BU	7' snugless boot, blue	2.61
45-6868-00BU	14' snugless boot, blue	3.99



NE8MC



NE8FAH

## NEUTRIK ETHERCON RJ45 DATA CONNECTORS FOR ROUGH ENVIRONMENTS

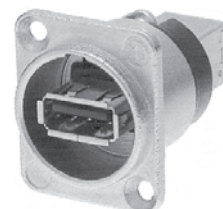
Neutrik unveils the EtherCon series a new generation of ruggedized RJ45 connectors. The first products out of the Ethercon series are a male cable connector carrier with class D channel performance and are designated for Category 5 and also a female chassis connector. EtherCon series is available shielded or unshielded and is compatible for use with 10 Base-T and 100 Base-TX systems. Ethernet has made its arrival into the entertainment industry. The EtherCon series is especially developed for audio and stage applications including DMX systems. It is also suited for harsh commercial and industrial applications and allows even outdoor internet access. The EtherCon male cable connector carrier comes along in a robust diecast shell and the unique Neutrik chuck-type strain relief for optimal cable and plug protection. The proven Neutrik quality and design makes it easy field attachable. The female chassis connector is based on the proven standard XLR A series with the secure latching system. For easy identification both male and female EtherCon are available with 9 different colour coding bushings and colour coding rings respectively.

Cat. No.	Description	Net Price
<b>MALE CABLE CONNECTORS*</b>		
♣ NE8MC	"D" series cable housing with chuck and bushing.	\$5.01
♣ NE8MC-1	Same as NE8MC above, but equipped with X series boot.	4.38
♣ NE8MC-B	"D" series black chromium housing with chuck and bushing.	5.90
♣ NE8MC-B-1	Same as NE8MC-B above, but equipped with X series boot.	5.01
<b>FEMALE RECEPTACLE</b>		
♣ NE8FAH	"A" series female receptacle for horizontal PCB mounting.	7.62
♣ NE8FBH	"B" series female receptacle for horizontal PCB mounting.	8.58
♣ NE8FAV	"A" series female receptacle for vertical PCB mounting.	7.73
♣ NE8FAV-YK	"A" series female receptacle with vertical PCB attached. IDC Krone terminals included.	15.06
♣ NE8FAV-Y110	"A" series female receptacle for vertical PCB attached. IDC 110 punch down included.	15.06
♣ NE8FBV	"B" series female receptacle for vertical PCB mounting.	8.68
♣ NE8FDP	"D" series female feed-through receptacle with metal flange. Mounting screws included.	17.80
♣ NE8FDV	"D" series female receptacle with secure latching system for vertical PCB mounting.	9.05
♣ NE8FDV-B	Black version of NE8FDV above.	9.66
♣ NE8FDV-YK	"D" series female receptacle with secure latching system for vertical PCB mounting. IDC Krone terminals included.	14.97
♣ NE8FDV-Y110	"D" series female receptacle with secure latching system for vertical PCB mounting. IDC 110 punch down included.	16.52
♣ NE8FF	CAT5 Ethercon D-size coupler; uses NE8MC connectors or standard RJ45 plugs.	30.13
♣ BSE-0	Black boot for Ethercon cable connectors. For other colours replace -0 with -2 = red, -3 = orange, -4 = yellow, -5 = green, -6 = blue, -7 = purple, -8 = grey, -9 = white.	.54
E-SCREW-1-10	Self-tapping PT-screw for Ethercon receptacles (NE8FDV-YK, NE8FDV, NE8FDV-Y110), 2.9 x 12 countersunk—black.	23.74

\*Cable connector comes without RJ-45 plug, plug has to be provided by end user.



NA1394-6



NAUSB

## NEUTRIK USB SERIES GENDERCHANGER TYPE CONNECTOR

The USB is a genderchanger type (USB A - USB B) which is reversible to offer both connector possibilities at the front and rear end. The Firewire is equipped with the most common IEEE1394 6-pol (Firewire 6) connector on both ends. These connectors are required to integrate computer-based equipment into sound and video systems, but also for audio networking like M-LAN, etc.

Cat. No.	No. of Contacts	Description	Net Price
NAUSB	4	USB bulk head reversible.	\$6.44
NAUSB-B	4	USB bulk head reversible, black.	7.08
NA1394-6	6	Firewire connector bulk head.	9.74
NA1394-6-B	6	Firewire connector bulk head, black.	10.22



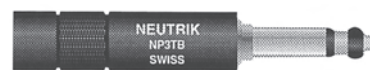
NP2C



NP3C



NP3C-BAG



NP3TB



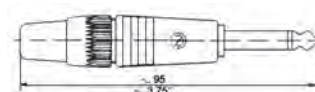
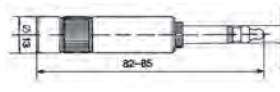
NP2RCS



NTP3RC



NP3TT-1



Continued on next page...