

# Panduit Spiral Wrapping

MANU  
356  
CODE

Cat. No.	Material	Colour	A In. (mm)	B In. (mm)	T In. (mm)	Bundle Size In. (mm)	Length	Net Price	
∅ T12N-C	Nylon (Black Nylon is weather resistant)	Natural	0.125" (3.2)	0.218" (5.5)	0.015" (.38)	1/16" (1.6) - 1/2" (12.7)	100' (30.5M)	\$89.17	
∅ T12N-C0		Black	0.125" (3.2)	0.218" (5.5)	0.015" (.38)	1/16" (1.6) - 1/2" (12.7)	100' (30.5M)	112.33	
∅ T19N-C		Natural	0.188" (4.8)	0.250" (6.4)	0.020" (0.51)	1/8" (3.2) - 1" (25.4)	100' (30.5M)	163.23	
∅ T19N-C0		Black	0.188" (4.8)	0.250" (6.4)	0.020" (0.51)	1/8" (3.2) - 1" (25.4)	100' (30.5M)	163.23	
∅ T25N-C		Natural	0.25" (6.4)	0.375" (9.5)	0.023" (.58)	3/16" (4.8) - 2" (50.8)	100' (30.5M)	162.12	
∅ T25N-C0		Black	0.25" (6.4)	0.375" (9.5)	0.023" (.58)	3/16" (4.8) - 2" (50.8)	100' (30.5M)	202.65	
∅ T38N-C		Natural	0.375" (9.5)	0.437" (11.1)	0.03" (.76)	5/16" (7.9) - 3" (76.2)	100' (30.5M)	275.18	
∅ T38N-C0		Black	0.375" (9.5)	0.437" (11.1)	0.03" (.76)	5/16" (7.9) - 3" (76.2)	100' (30.5M)	302.72	
∅ T50N-C		Natural	0.5" (12.7)	0.5" (12.7)	0.032" (.81)	3/8" (9.5) - 4" (101.6)	100' (30.5M)	477.99	
∅ T50N-C0		Black	0.5" (12.7)	0.5" (12.7)	0.032" (.81)	3/8" (9.5) - 4" (101.6)	100' (30.5M)	597.46	
∅ T62N-C	TEFLON‡	Natural	0.625" (15.9)	0.625" (15.9)	0.035" (.89)	1/2" (12.7) - 4 1/2" (114.3)	100' (30.5M)	671.62	
∅ T62N-C0		Black	0.625" (15.9)	0.625" (15.9)	0.035" (.89)	1/2" (12.7) - 4 1/2" (114.3)	100' (30.5M)	899.99	
∅ T75N-C		Natural	0.75" (19.1)	0.875" (22.2)	0.4" (1.01)	5/8" (15.9) - 5" (127)	100' (30.5M)	835.96	
∅ T75N-C0		Black	0.75" (19.1)	0.875" (22.2)	0.4" (1.01)	5/8" (15.9) - 5" (127)	100' (30.5M)	1180.15	
∅ T100N-C		Natural	1" (25.4)	1.125" (28.6)	0.045" (1.0)	7/8" (22.2) - 6" (152.4)	100' (30.5M)	1170.31	
∅ T100N-C0		Black	1" (25.4)	1.125" (28.6)	0.045" (1.0)	7/8" (22.2) - 6" (152.4)	100' (30.5M)	1462.92	
∅ T12T-C		TEFLON‡	Natural	0.125" (3.2)	0.218" (5.5)	0.02" (.5)	1/16" (1.6) - 1/2" (12.7)	100' (30.5M)	532.67
∅ T19T-C			Natural	0.188" (4.8)	0.250" (6.4)	0.03" (.76)	1/8" (3.2) - 1" (25.4)	100' (30.5M)	764.73
∅ T25T-L			Natural	0.25" (6.4)	0.375" (9.5)	0.03" (.76)	3/16" (4.8) - 2" (50.8)	50' (15.2M)	486.79
∅ T50T-Q			Natural	0.5" (12.7)	0.5" (12.7)	0.03" (.76)	3/8" (9.5) - 4" (101.6)	25' (7.6M)	506.89
∅ T62T-Q	Natural		0.625" (15.9)	0.625" (15.9)	0.03" (.76)	1/2" (12.7) - 4 1/2" (114.3)	25' (7.6M)	632.88	
∅ T75T-X	Natural		0.75" (19.1)	0.875" (22.2)	0.03" (.76)	5/8" (15.9) - 5" (127)	10' (3.0M)	353.89	
∅ T100T-X	Natural		1" (25.4)	1.125" (28.6)	0.04" (1.01)	7/8" (22.2) - 6" (152.4)	10' (3.0M)	547.02	

‡TEFLON or equivalent fluorocarbon PTFE material is used. TEFLON is a registered trademark of E.I. DuPont Co.



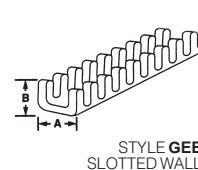
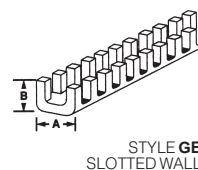
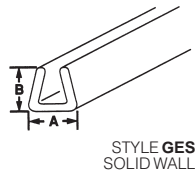
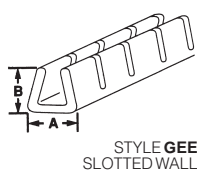
## PANDUIT PAN-WRAP™ SPLIT HARNESS WRAP

Pan-Wrap Split Harness Wrap is an innovative addition to the Panduit Abrasion Protection Line. Engineered for wire harness protection. Pan-Wrap bundles and protects wire, cable, and hoses. The Pan-Wrap design provides full 360° coverage with pre-cut slots for break-outs to maximize reliability and reduce installation time. **FEATURES:** Flexible design allows maneuverability and protects wire and cables during movement. Installation tool reduces installation time and lowers installed cost.

Cat. No.	Size I.D. In. (mm)	Maximum Bundle Diameter In. (mm)	Material	Colour	Length Ft. (M)	Net Price
∅ PW50F-T	0.50 (12.7)	0.55 (13.97)	Polyethylene	Natural	200 (61.05)	\$263.03
∅ PW75F-C	0.75 (19.05)	0.80 (20.32)	Polyethylene	Natural	100 (30.48)	189.73
∅ PW50F-T20	0.50 (12.7)	0.55 (13.97)	Polyethylene	Black	200 (61.05)	288.90
∅ PW75F-C20	0.75 (19.05)	0.80 (20.32)	Polyethylene	Black	100 (30.48)	204.82

### INSTALLATION TOOL

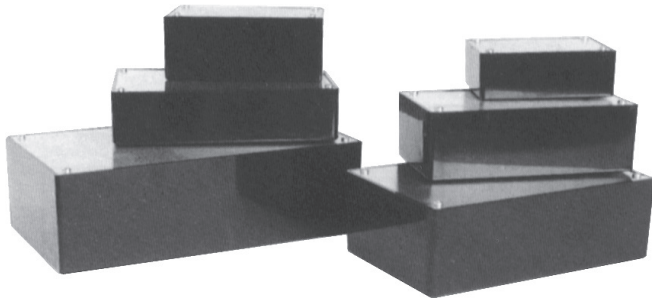
Cat. No.	Material	Colour	Size (In.)	Net Price
∅ PWT50	ABS	White	0.50	\$8.72
∅ PWT75	ABS	White	0.75	9.11



## PANDUIT GROMMET EDGING

Protects and insulates wires and cables from chafing against sharp edges. Choose from five materials—**Nylon:** Self extinguishing. For indoor use up to 149°F (65°C). **Polyethylene:** General purpose material for indoor use up to 122°F (50°C). Style GEE and GES provided in .030" (0.88mm) thick material, making them highly flexible. Available with slotted or solid wall construction. **Weather Resistant Polyethylene:** For outdoor use to 122°F (50°C). Excellent resistance to acid rain and ultra-violet light. **Flame Retardant Polyethylene:** UL94-0 rated material. Will not support a flame. Available in slotted or solid wall construction. **Adhesive Lined Polyethylene:** Base is lined with a pressure sensitive adhesive. Available in natural and weather resistant Adhesive ensures that the product will stay where it is installed.

Continued on next page....

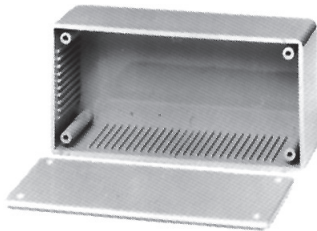


## PLASTIC CASES

Black plastic cases w/ aluminum cover plates.

Cat. No.	Dimensions	Net Price
53-520-0	82L x 54W x 31H*	\$3.25
53-522-0	83L x 54W x 30H	3.42

\*Plastic cover.



## PLASTIC CASES

Grey ABS plastic w/ ABS plastic covers.

Cat. No.	Dimensions	Net Price
53-541-0	99L x 49W x 40H	\$2.83
53-551-0	125L x 60W x 40H	4.00
53-571-0	145L x 85W x 50H	5.42
53-581-0	180L x 110W x 60H	6.83



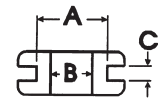
Cat. No.	Description	Net Price
53-918-0	275Lx182Wx40H polypropylene box with 18 compartments	\$4.97



## KNOBS

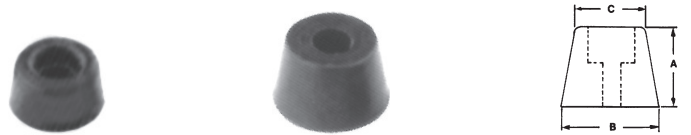
All knobs have brass bushings with set screw.

Cat. No.	A	B	C	Shaft	Net Price
54-122-0	15mm	15mm	12mm	6.35mm	\$1.25
54-217-0	18mm	23mm	15mm	6.35mm	.67
54-218-0	27mm	33mm	17mm	6.35mm	1.05
54-227-0	25mm	31mm	15mm	6.35mm	1.08
54-228-0	31mm	37mm	15mm	6.35mm	1.35
54-232-0	16mm	20mm	12mm	6.35mm	.77
54-234-0	24mm	27mm	16mm	6.35mm	.92
54-278-0	23mm	37mm	15mm	6.35mm	1.50
54-279-0	23mm	37mm	15mm	6.35mm	1.50
54-374-0	30mm	Pointer knob		6.35mm	.60



## RUBBER GROMMETS

Cat. No.	A	B	C	Net Price Per 100
54-811-0	5/16"	3/16"	1/16"	\$8.83
54-814-0	3/8"	1/4"	1/16"	9.70
54-817-0	1/2"	3/8"	1/16"	9.70



## RUBBER FEET

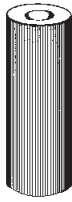
Complete w/ mounting hardware.

Cat. No.	Pkge.	A	B	C	Net Price Per 100
54-865-0	-8	7mm	19mm	15mm	\$41.67
54-870-0	-8	12mm	20mm	16mm	43.33
54-875-0	-4	16mm	25mm	21mm	91.67



## ADHESIVE RUBBER FEET

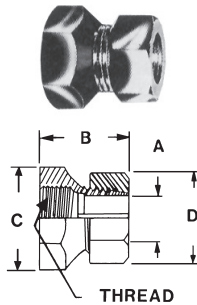
Cat. No.	Size	Thickness	Net Price Per 100
54-880-0	1/2" round	.232"	\$13.67
54-885-0	1/2" square	.232"	13.67



## HH SMITH NICKEL PLATED BRASS SPACERS

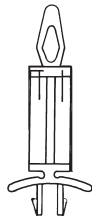
ALL 1/4" O.D.

Cat. No.	Length	Clearance Hole
<b>ROUND CLEARANCE</b>		
2105	.250	#8
2340	.250	#4
2107	.500	#8
2108	.750	#8
2109	1.000	#8
<b>ROUND THREADED</b>		
2374	1.000	4-40



## HH SMITH BRASS, NICKEL-PLATED SHAFT LOCK

Cat. No.	For Shaft Size	Dimensions				Thread Size
		A	B	C	D	
181	1/4"	.253"	1/2"	1/2"	7/16"	3/8-32

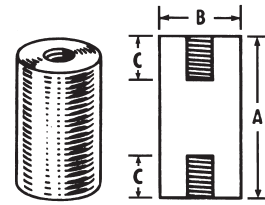


## PRINTED CIRCUIT BOARD SUPPORTS

Made of flame retardant nylon. Snaps into circuit board and chassis. Fits in chassis hole .187 diameter. Fits in PC board hole .156.

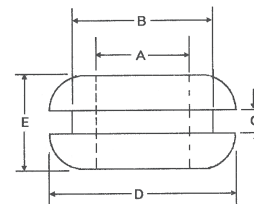
Cat. No.	Length
4295	3/8"

**NOTE: PLEASE CONTACT YOUR ELECTRO SONIC SALES REPRESENTATIVE FOR PRICING AND AVAILABILITY**



## HH SMITH CERAMIC STANDOFFS OUTSIDE GLAZED

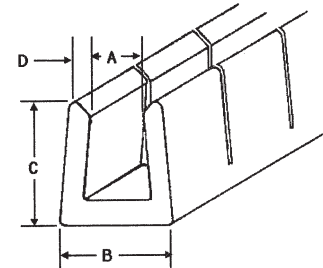
Cat. No.	Dimensions		
	A	B	C
2642	3/8"	3/8"	5/32"
2644	1/2"	1/2"	9/64"
2645	3/4"	1/2"	1/4"
2646	1"	1/2"	3/8"
2647	1-1/2"	1/2"	9/16"



## RUBBER GROMMETS

**MATERIALS:** Black Buna-S synthetic rubber (SBR), approximately 60 durometer.

Cat. No.	Dimensions (Inches)				
	A	B	C	D	E
2187	5/8	7/8	1/16	1-1/8	5/16



## CATERPILLAR GROMMETS

**MATERIALS:** Black nylon, type 6/6. **APPLICATIONS:** "U" shaped nylon extrusion, with slits along length to make grommets fit and size (Minimum 1" dia.) or shape hole, in chassis from 1/32 to 1/8" thick.

Cat. No.	Chassis Thickness (Inches)	Dimensions (Inches)			
		A	B	C	D
2692	.032-.052	.052	.125	.190	.040
2693	.052-.085	.170	.205	.205	.045
2694	.084-.125	.125	.210	.220	.045

**MOVING? CHANGING JOBS?  
PLEASE LET US KNOW TO KEEP OUR RECORDS  
UP TO DATE AND KEEP YOU INFORMED.**