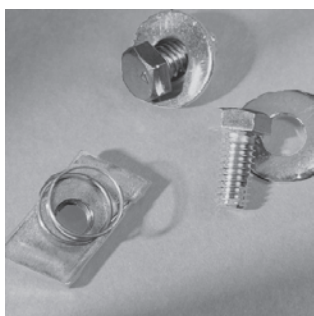




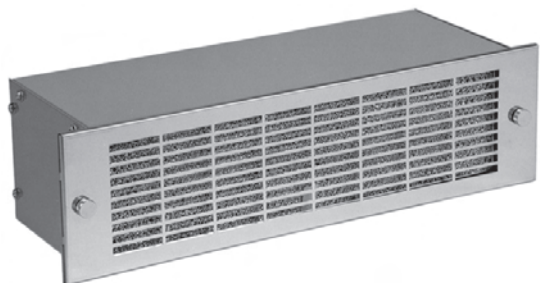
1/4-20 spring loaded nuts and 0.62" round head slotted bolts and washers for "C" channels.

Cat. No.	Description	Net Price
1421S	Pkg. of 4	\$14.82



3/8 x 16 spring loaded nuts and 0.75" hex head bolts and washers for "C" channels (used in racks with Amhal strut rail mounting).

Cat. No.	Description	Net Price
1463S	Pkg. of 3	\$22.80



RACK INTAKE BLOWERS

- Standard 19" rack mount.
- Each unit contains a quadruplex centrifugal blower, powered by a single precision ball-bearing motor.
- Air delivery from more than 50% of their 17" width.
- Internal neoprene isolation mounts reduce transmission of vibration to the rack.
- Air intake only, to pressurize the rack with filtered air.
- Heavy steel construction.
- Attractive 19" stainless steel grill included.
- 115 VAC, 50/60 Hz, motor is UR/CSA listed, ball bearing type, cooled by incoming air.
- Includes permanent filter.
- Comes with 6' STJW 3-wire cord.

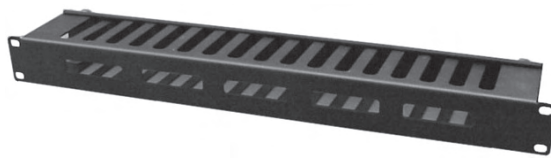
Cat. No.	Free Flow Air Delivery (CFM)	Ambient Temp (F)	Panel Height		Net Price
			Inches	Units	
KP350A	150	-20 to +250	3.50	2	\$574.16
KP529A	300	-20 to +250	5.25	3	600.65
KP729A	470	-20 to +250	7.00	4	870.09



CABLE ORGANIZING RING PANELS

- Five steel rings welded to a folded (for extra strength) 19" rack panel.
- Rings extend 3.5" from panel front.
- Rugged textured black powder paint finish.
- Mounting hardware not included, please order separately.

Cat. No.	Panel Height		Net Price
	Inches	Units	
PCMBS19001BK1	1.75	1	\$43.49
PCMBS19003BK1	3.50	2	48.07



FRONT VIEW

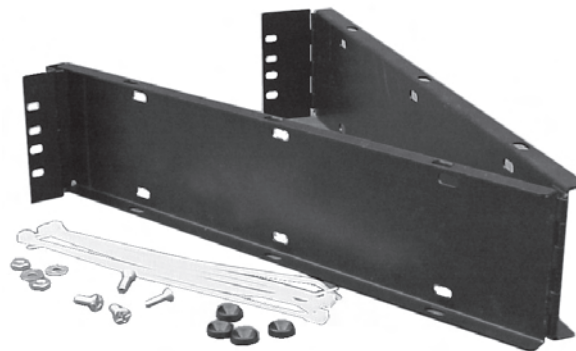


REAR VIEW

CABLE ORGANIZING METAL FINGER PANELS

- 19" rack mount.
- Snap open, hinged rear door.
- Rack mount side has five slotted openings.
- Extends 3" (not including snap buttons) into rack depth.
- Rugged textured black powder paint finish.
- Mounting hardware not included, please order separately.

Cat. No.	Panel Height		Net Price
	Inches	Units	
PCMDS19001BK1	1.75	1	\$83.56
PCMDS19003BK1	3.50	2	96.71
PCMDS19005BK1	5.25	3	162.51



HINGED CABLE GUIDE

- Mounts to standard 19" rack rails.
- Steel construction.
- Includes mounting hardware & tie wraps.
- Rugged textured black powder paint finish.

Cat. No.	Panel Height		Net Price
	Inches	Units	
CGUIDE	3.50	2	\$91.76



SINGLE CABLE RING

- Mounts to standard 19" rack rails.
- Steel construction.
- 3.5" long x 1.25" wide.
- Rugged textured black powder paint finish.
- Mounting hardware not included, please order separately.

Cat. No.	Panel Height		Units	Net Price
	Inches			
CMRBK1	1.75		1	\$7.21
CMR3BK1	3.50		2	9.61



RACK MOUNT/TABLE TOP INSTRUMENT

- Easy assembly.
- Strong construction using .125" thick side panels and 0.62" thick top and bottom panels.
- Light weight design—all aluminum.
- Can be used with or without rack mounting brackets (included).
- Front & rear panel are interchangeable (one is off white and the other smooth black).
- Enclosure is finished in textured black powder paint.
- Includes top, bottom, side panels, feet, rack mount brackets and all hardware.
- Easy access to inside, as only 4 screws need to be removed from any panel.
- Aluminum chassis panel is optional.

Cat. No.	Panel Height		Width (In.)	Depth (In.)	Inside Clearance with Chassis Installed (In.)	Net Price
	Inches	Units				

SOLID TOP AND BOTTOM

RMCS19018BK1	1.75	1	17	8	0.81	\$77.82
RMCS190113BK1	1.75	1	17	13	0.81	91.56
RMCS19038BK1	3.50	2	17	8	2.56	86.98
RMCS190313BK1	3.50	2	17	13	2.56	109.87
RMCS190513BK1	5.25	3	17	13	4.31	125.89
RMCS190713BK1	7.00	4	17	13	6.06	144.20
RMCS190813BK1	8.75	5	17	13	7.81	173.96
RMCS191013BK1	10.50	6	17	13	9.56	192.27
RMCS191015BK1	10.50	6	17	15	9.56	189.98

VENTILATED TOP AND BOTTOM

RMCV19018BK1	1.75	1	17	8	0.81	85.60
RMCV190113BK1	1.75	1	17	13	0.81	100.71
RMCV19038BK1	3.50	2	17	8	2.56	95.67
RMCV190313BK1	3.50	2	17	13	2.56	120.84
RMCV190513BK1	5.25	3	17	13	4.31	138.49
RMCV190713BK1	7.00	4	17	13	6.06	158.62
RMCV190813BK1	8.75	5	17	13	7.81	191.36
RMCV191013BK1	10.50	6	17	13	9.56	211.49
RMCV191015BK1	10.50	6	17	15	9.56	208.98

CHASSIS PANEL

Cat. No.	Width	Use with Enclosure Depth (In.)	Net Price
RMP908	8.5	8	\$18.20
RMP1908	17	8	27.24
RMP1913	17	13	31.58
RMP1915	17	15	34.67

ENVIRONMENT CONTROL



ECONOMY PLASTIC FILTER FAN GRILLS

- Create your own filter fans or exhaust grill.
- Mounts easily with 4 screws using template and hardware provided.
- Complete with flame retardant ABS plastic grill & flame retardant synthetic filter.
- Can be used with standard 3.15" (80mm) or 4.7" (120 mm) square fans.

Cat. No.	Grill Size		Use with Square Fan Size	Colour	Net Price
	H	W			
XPFA80BK	4.13"	4.13"	3.15"	Black	\$8.07
XPFA80CG	4.13"	4.13"	3.15"	Grey/Beige	8.07
XPFA80GY	4.13"	4.13"	3.15"	ASA 61 Grey	8.07
XPFA120BK	5.91"	5.91"	4.70"	Black	12.29
XPFA120CG	5.91"	5.91"	4.70"	Grey/Beige	12.29
XPFA120GY	5.91"	5.91"	4.70"	ASA 61 Grey	12.29

REPLACEMENT FILTERS FOR ABOVE (5 PER PACK)

Cat. No.	Use with Square Fan Size	Net Price
PFF1000	3.15" (XPFA80 series)	\$8.70
PFF2000	4.70" (XPFA120 series)	9.93



Most electronic control systems generate a substantial amount of heat during operation. This heat factor is intensified as electronic controls are made more compact, perform more functions, and are placed in confined areas.

Additional problems are encountered when the electronic process control system is located on-line in an industrial setting, rather than in a clean computer room. The factory environment can be hostile to the point that performance and effective life of the electronic components are materially reduced, or the control system fails completely. Ambient temperature might be excessively high, as that found in a steel mill. Moisture-laden air and airborne particulate matter might be present to adversely affect the electronic components, as in the paper manufacturing industry.

Air conditioners are designed to perform reliably under many of these harsh conditions and to provide the cooling and environmental protection required by sensitive electronic production control systems.

Cat. No.	Rating	Rated Voltage	Hz	Height	Width	Depth	Net Price
DTS1200A115	1200BTU/H	115	60	13.00	14.76	7.48	\$2404.53
DTS2000A115	2000BTU/H	115	60	17.52	12.40	10.04	2506.38
DTS3500A115	3500BTU/H	115	60	36.00	15.35	7.87	3163.18
DTS6000A115	6000BTU/H	115	60	53.15	15.35	7.87	3839.02
DTS8000A115	8000BTU/H	115	60	53.15	15.63	10.63	4225.22
DTS12000A115	12000BTU/H	115	60	53.15	15.63	10.63	5445.85

A115 units can be operated 50 Hz at 110 V