

FIG. 13

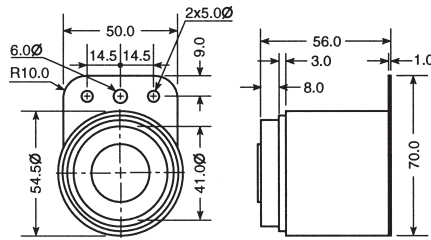


FIG. 14

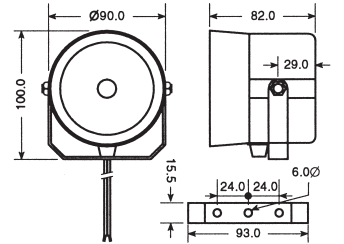


FIG. 15

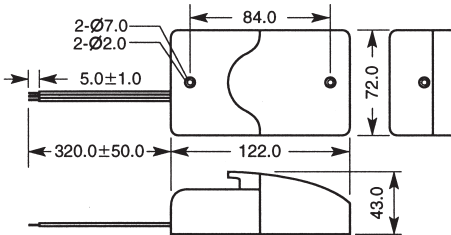


FIG. 16

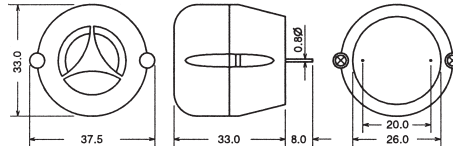


FIG. 19

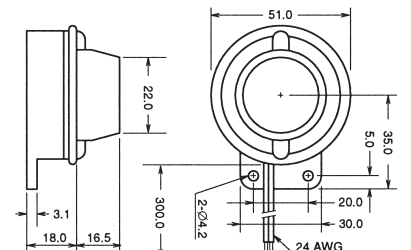


FIG. 20

All dimensions are in millimeters

## MOUNTED PIEZO TRANSDUCERS

Cat. No.	Resonant Frequency (KHZ±0.5)	dB (Min) @ Res. Freq. 10cm, 5 V square wave	Operating Voltage (Max Vp-p)	D×H	Fig.	Mounting & Features	Net Price
<b>EXTERNAL DRIVE—NO FEEDBACK</b>							
PT-1540P	4.0	80	25	17.0×7.0	1	P.C. Board—2 Pin (10.0MM c/c)	\$1.47
PT-2040P	4.0	90	30	22.0×7.0	1	P.C. Board—2 Pin (10.0MM c/c)	1.33
PT-2130P	3.0	90	25	24.0×9.5	1	P.C. Board—2 Pin (10.0MM c/c)	2.42
PT-1250W	4.8	80	25	13.8×4.0	1	2 Wire	2.20
PT-1550W	5.0	80	25	16.8×4.0	1	2 Wire	1.55
PT-2060W	6.0	95	30	24.0×5.0	2	Flange Mount (29.0 c/c)—2 Wire	1.43
PT-2725W	2.5	90	30	30.0×10.0	2	Flange Mount (35.0 c/c)—2 Wire	2.06
PT-2745W	4.5	90	30	30.0×5.5	2	Flange Mount (35.0 c/c)—2 Wire	1.51

## MOUNTED PIEZO TRANSDUCERS

Cat. No.	Resonant Frequency (KHZ ± 0.5)	dB (Min) @ 30 cm @ 12 VDC	Operating Voltage (VDC)	D×H	Fig.	Mounting & Features	Net Price
<b>SELF DRIVE—WITH FEEDBACK</b>							
PT-2735FP	3.5	88	3-28	30.0×10.0	3	3 blade—3.0mm standoff	\$2.42
PT-3529FP	2.9	90	3-28	42.0×16.0	1	3 pin	3.01
PT-2065FW	6.5	85	3-28	24.0×5.0	2	Flange Mount (29.0 c/c)—2 Wire	1.68
PT-2745FW	4.5	85	3-28	30.0×5.5	2	Flange Mount (35.0 c/c)—2 Wire	1.63
PT-3529FW	2.9	90	3-28	42.0×16.0	2	Flange Mount (50.0 c/c)—2 Wire	2.66

## MOUNTED PIEZO TRANSDUCERS

Cat. No.	Resonant Frequency (KHZ ± 0.5)	dB (Min) @ 30	Max. Input (watts)	D×H	Fig.	Mounting & Features	Net Price
<b>MINIATURE SPEAKER—CONE TYPE</b>							
PB-2015W	1500	75 @ 1.0KHz	0.15	23.0×3.2	2	Flange Mount—2 Wire	\$5.16
PB-2712P	1250	85 @ 1.0KHz	0.2	30.0×13.0	1		5.21

## MOUNTED PIEZO TRANSDUCERS

Cat. No.	Resonant Frequency (HZ)	dB (Min) @ Res. Freq. 10cm	Operating Voltage	D×H	Fig.	Mounting	Net Price
----------	-------------------------	----------------------------	-------------------	-----	------	----------	-----------

## ELECTRO-MAGNETIC TRANSDUCERS

PB-0927P	2731	85 @ 5.0V	5	5.5×9.0	1	2 pin (4.0mm c/c)	\$2.78
PB-1220P	2048	85 @ 1.5V	1.1-1.7	12.0×8.5	1	2 pin (6.5mm c/c)	1.46
PB-1221P	2048	80 @ 1.5V	1.1-1.7	12.0×8.5	1	1 pin (6.5mm c/c)	1.46
PB-1620P	2048	85 @ 1.5V	1.1-3.0	See Figure	6	2 pin (7.6mm c/c)	2.93
PB-1621P	2048	85 @ 5.0V	3-8	See Figure	6	2 pin (7.6mm c/c)	2.93
PB-1622P	2048	85 @ 12V	6-18	See Figure	6	2 pin (7.6mm c/c)	2.93

# Mallory Audible Signals

## MOUNTED PIEZO INDICATORS

Cat. No.	Operating Voltage (VDC)	Oscillating Frequency $\pm 0.5\%$	dB (minimum) @ 12VDC	D x H (mm)	Fig.	Mounting & Features	Net Price
<b>FAST PULSE</b>							
PF-21N30W	4-28	3.0	80 @ 30cm	24.0 x 9.5	2	Flange Mount (29.0 c/c), 2 wire	<b>\$7.35</b>
PF-35N29W	3-28	2.9	90 @ 30cm	42.0 x 16.0	2	Flange Mount (50.0 c/c), 2 wire	<b>7.73</b>
PF-35A29W	3-20	2.9	95 @ 30cm	42.0 x 16.0	2	Flange Mount (50.0 c/c), 2 wire	<b>8.82</b>
PF-20A35EW	3-28	3.5	95 @ 30cm	See Figure	5	Panel or Flange Mount (33.5 c/c), 2 wire	<b>7.65</b>
PF-27N35PS	3-28	3.5	90 @ 30cm	30.0 x 16.0	1	PC Board, 2 Pin	<b>7.35</b>
PF-21A31P	3-24	3.0	90 @ 30cm	24.0 x 13.5	1	PC Board, 2 Pin (Sealed Back)	<b>9.12</b>
<b>CONSTANT &amp; FAST PULSE</b>							
PFD-21A29W	3-24	3.0	90 @ 30cm	24.0 x 13.5	2	Flange Mount (29.0 c/c), 3 wire	<b>8.60</b>
PFD-21N30W	4-28	3.0	80 @ 30cm	24.0 x 9.5	2	Flange Mount (29.0 c/c), 3 wire	<b>7.50</b>
PFD-27N36W	3-28	3.5	90 @ 30cm	30.0 x 10.0	2	Flange Mount (39.0 c/c), 3 wire	<b>7.28</b>
PFD-27A35W	3-20	3.5	95 @ 30cm	30.0 x 16.0	2	Flange Mount (39.0 c/c), 3 wire	<b>8.60</b>
PFD-20A35EW	3-28	3.5	95 @ 30cm	See Figure	5	Panel or Flange Mount (33.5 c/c), 3 wire	<b>8.39</b>
PFD-27N36P	3-28	3.5	90 @ 30cm	30.0 x 10.0	1	PC Board, 3 Pin	<b>7.50</b>
PFD-21N30P	4-28	3.0	80 @ 30cm	24.0 x 9.5	1	PC Board, 3 Pin	<b>7.50</b>
PFD-27A35P	3-20	3.5	95 @ 30cm	30.0 x 16.0	1	PC Board, 3 Pin	<b>8.60</b>
<b>CONSTANT</b>							
PK-20A38W	3-20	3.8	95 @ 30cm	23.4 x 18.0	2	Flange Mount (29.0 c/c), 2 wire	<b>5.29</b>
PK-21N30W	1.5-30	3.0	80 @ 30cm	24.0 x 9.5	2	Flange Mount (29.0 c/c), 2 wire	<b>4.26</b>
PK-20A25W	3-20	2.5	95 @ 30cm	23.4 x 18.0	2	Flange Mount (29.0 c/c), 2 wire	<b>5.29</b>
PK-27N26W	3-28	2.5	90 @ 30cm	30.0 x 10.0	2	Flange Mount (39.0 c/c), 2 wire	<b>4.86</b>
PK-27A35W	3-20	3.5	95 @ 30cm	30.0 x 16.0	2	Flange Mount (39.0 c/c), 2 wire	<b>5.97</b>
PK-35N29W	3-28	2.9	90 @ 30cm	42.0 x 16.0	2	Flange Mount (50.0 c/c), 2 wire	<b>5.59</b>
PK-35A29W	3-20	2.9	95 @ 30cm	42.0 x 16.0	2	Flange Mount (50.0 c/c), 2 wire	<b>6.33</b>
PK-12N40P	3-15	4.1	83 @ 10cm	13.0 x 7.5	1	PC Board, 2 Pin	<b>3.67</b>
PK-20A25P	3-20	2.5	95 @ 30cm	23.4 x 18.0	1	PC Board, 2 Pin	<b>5.29</b>
PK-20A38P	3-20	3.8	95 @ 30cm	23.4 x 18.0	1	PC Board, 2 Pin	<b>5.00</b>
PK-21A31P	3-24	3.5	90 @ 30cm	24.0 x 13.5	1	PC Board, 2 Pin	<b>5.59</b>
PK-27N36PS	3-28	3.5	90 30CM	30.0 x 10.0	1	PC BOARD, 2 PIN	<b>4.86</b>
PK-27N26PS	3-28	2.5	90 30CM	30.0 x 10.0	1	PC BOARD, 2 PIN	<b>4.86</b>
PK-27A25PS	3-20	2.5	95 30CM	30.0 x 16.0	1	PC BOARD, 2 PIN	<b>5.97</b>
PK-27A35PS	3-20	3.5	95 30CM	30.0 x 16.0	1	PC BOARD, 2 PIN	<b>5.97</b>
<b>SLOW PULSE</b>							
PL-21N30W	4-28	3.0	80 @ 30cm	24.0 x 9.5	2	Flange Mount (29.0 c/c), 2 wire	<b>6.92</b>
PL-27A35W	3-20	3.5	95 @ 30cm	30.0 x 16.0	2	Flange Mount (39.0 c/c), 2 wire	<b>8.47</b>
PL-27N26W	3-28	2.5	90 @ 30cm	30.0 x 10.0	2	Flange Mount (39.0 c/c), 2 wire	<b>7.35</b>
PL-35N29W	3-28	2.9	90 @ 30cm	42.0 x 16.0	2	Flange Mount (50.0 c/c), 2 wire	<b>7.73</b>
PL-35A29W	3-20	2.9	95 @ 30cm	42.0 x 16.0	2	Flange Mount (50.0 c/c), 2 wire	<b>8.82</b>
PL-20A35EW	3-28	3.5	95 @ 30cm	See Figure	5	Panel or Flange Mount (33.5 c/c), 2 wire	<b>7.65</b>
PL-21A31P	3-24	3.0	90 @ 30cm	24.0 x 13.5	1	PC Board, 2 Pin	<b>9.12</b>
PL-27N35PS	3-28	3.5	90 @ 30cm	30.0 x 16.0	1	PC Board, 2 Pin	<b>7.35</b>
<b>CONSTANT &amp; SLOW PULSE</b>							
PLD-27N36W	3-28	3.5	90 @ 30cm	30.0 x 10.0	2	Flange Mount (39.0 c/c), 3 wire	<b>7.50</b>
PLD-35A29W	3-20	2.9	95 @ 30cm	42.0 x 16.0	2	Flange Mount (50.0 c/c), 3 wire	<b>8.98</b>
PLD-20A35EW	3-28	3.5	95 @ 30cm	See Figure	5	Panel or Flange Mount, 3 wire	<b>8.39</b>
PLD-21N30P	4-28	3.0	80 @ 30cm	24.0 x 9.5	1	PC Board, 3 Pin	<b>7.50</b>
PLD-27N36P	3-28	3.5	90 @ 30cm	30.0 x 10.0	1	PC Board, 3 Pin	<b>7.50</b>

## ELECTRO-MAGNETIC INDICATORS

Cat. No.	Operating Voltage (VDC)	Oscillating Frequency $\pm 0.5\%$	dB (minimum)	D x H (mm)	Fig.	Mounting & Features	Net Price
<b>CONSTANT</b>							
PB-12N23P-01	1.25-2.0	2300 $\pm$ 200	80 @ 10cm	12.0 x 9.5	1	2 Pin—Sealed	<b>\$5.00</b>
PB-12N23P-03	2.5-4.0	2300 $\pm$ 200	85 @ 10cm	12.0 x 9.5	1	2 Pin—Sealed	<b>3.83</b>
PB-12N23P-05	4.0-6.5	2300 $\pm$ 200	85 @ 10cm	12.0 x 9.5	1	2 Pin—Sealed	<b>3.83</b>
PB-12N23P-12	10.0-14.0	2300 $\pm$ 200	85 @ 10cm	12.0 x 9.5	1	2 Pin—Sealed	<b>3.83</b>
PK-16N04W-03	2.0-4.0	400 $\pm$ 100	82 @ 30cm	See Figure	8	Electric Solid State Buzzer	<b>7.50</b>
PK-16N04W-06	4.0-8.0	400 $\pm$ 100	85 @ 30cm	See Figure	8	Electric Solid State Buzzer	<b>7.95</b>
PK-16N04W-12	8.0-16.0	400 $\pm$ 100	85 @ 30cm	See Figure	8	Electric Solid State Buzzer	<b>7.50</b>
PK-16N04W-24	20.0-28.0	400 $\pm$ 100	85 @ 30cm	See Figure	8	Electric Solid State Buzzer	<b>7.95</b>

## PIEZO SIRENS

Cat. No.	Sweep (Pulse) Rate @ 12VDC (HZ $\pm 20\%$ )	Operating Voltage (Rated 12VDC)	Operating Frequency (KHz)	dB @ 100cm 12V (min)	Fig.	Net Price
<b>CONSTANT</b>						
PS-580	—	6-14	2.8 $\pm$ 0.5	100	13	<b>\$9.48</b>
PS-550	—	7-15	2.8 $\pm$ 0.5	105	11	<b>14.69</b>
PS-520	—	7-15	3.0 $\pm$ 0.5	105	9	<b>11.92</b>
<b>HI-LO</b>						
PS-562	1.2	7-15	2.5/3.5	100	12	<b>7.93</b>
PS-552	1.2	7-15	2.5/3.5	105	11	<b>14.30</b>
PS-522	1.2	7-15	2.5/3.5	105	9	<b>11.92</b>
<b>PULSE</b>						
PS-551	1.2	7-15	2.8 $\pm$ 0.5	105	11	<b>14.30</b>
PS-521	1.2	7-15	3.0 $\pm$ 0.5	105	9	<b>11.92</b>
<b>SWEEP</b>						
PS-593	3.5	5-16	1.5-3.5	115	14	<b>17.41</b>
PS-583	3.3	6-14	1.5-3.5	100	13	<b>10.61</b>
PS-953	4.5	6-14	2.0-3.5	105	19	<b>12.65</b>
PS-533	3.3	7-15	1.5-3.5	105	10	<b>14.69</b>
PS-553	3.3	7-15	1.5-3.5	105	11	<b>14.69</b>
<b>INTRUDER ALARM WITH STROBE</b>						
PS-913	4.5	11-14	1.5-3.5	105	16	<b>36.74</b>