

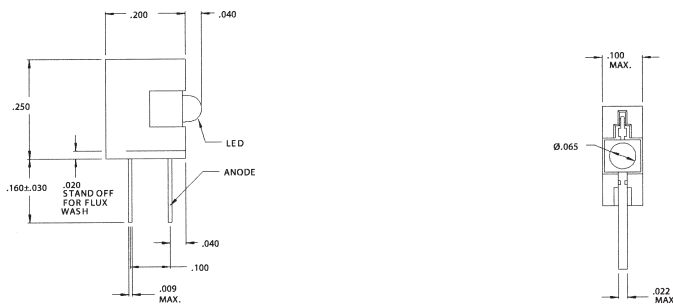
Cat. No.	Colour	Voltage	Typical Intensity (Mcd)	Current AC/DC	Net Price Each	
					1-299	300-Up
<b>T10 BA9 STYLE SINGLE CONTACT BAYONET BASE, FIG 4</b>						
18602250	Red	12	350	15	\$9.79	\$8.70
18602251	Green	12	1000	15	15.84	14.08
18602252	Yellow	12	300	15	9.79	8.70
18602257	Blue	12	400	15	15.84	14.08
18602350	Red	24	350	15	9.79	8.70
18602351	Green	24	1000	15	15.84	14.08
18602357	Yellow	24	300	15	15.84	14.08
18602352	Blue	24	400	15	9.79	8.70
1860235W3	White	24	750	15	15.84	14.08
1860245W3	White	28	750	15	15.84	14.08
18602450	Red	28	350	15	9.79	8.70
18602451	Green	28	1000	15	15.84	14.08



### CIRCUIT BOARD INDICATORS SERIES 5300H, 5302H, AND 5308H

**FEATURES:** Block mounting and spacing alignment saves assembly cost and time. Full range of brightness. TTL compatible. Standoffs prevent flux entrapment. Requires no external current limiting resistors (**series 5302H-5 only**). Housing: Black nylon, UL94V-0.

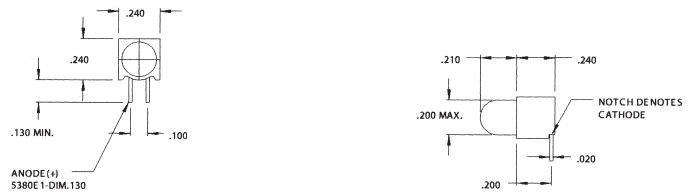
Cat. No.	Lens Colour	Forward		Lumen mcd	Net Price
		Volts	mA		
5300H1	Red	2.0	10	6.3	\$ .56
5300H1-5	Red/Green	2.2	10	6.0	1.40
5300H5-1	Green/Red	2.2	10	6.0	1.40
5300H5	Green	2.2	10	10.0	.56
5300H7	Yellow	2.1	10	6.3	.56
5302H1-5V	Red	5.0	10	8.0	1.09
5302H3-5V	Amber	5.0	10	8.0	1.09
5302H5-5V	Green	5.0	12	8.0	1.09
5302H1-12V	Red	12.0	12	8.0	1.09
5302H3-12V	Amber	12.0	12	8.0	1.09
5302H5-12V	Green	12.0	12	8.0	1.09
5308H1	Red	2.1	20	68.0	1.00
5308H-5	Green	2.2	20	100.0	1.00
5308H7	Yellow	2.2	20	160.0	1.00



### CIRCUIT BOARD INDICATORS SERIES 5350T

**FEATURES:** Perfect height and center spacing with 6 T-1 LEDs. Stackable. Labor-saving single-block installation. Standoffs prevent flux entrapment. Press-in pins hold part through soldering. Compact, only 5.6mm high housing: Black thermoplastic polyester, UL94V-0.

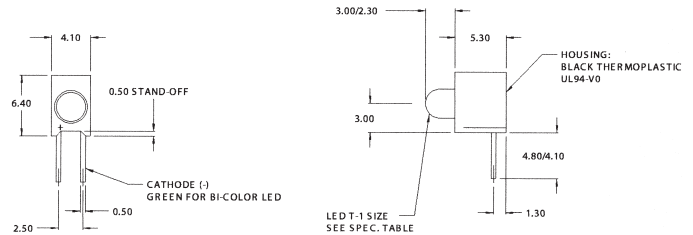
Cat. No.	Lens Colour	Forward		Lumen mcd	Net Price
		Volts	mA		
5352T1-5V	Red	5.0	9.6	5.0	\$1.37
5352T3-5V	Amber	5.0	10	5.0	1.37
5352T5-5V	Green	5.0	10	5.0	1.37
5350T1LC	Red	1.8	2	.5	1.43
5350T5LC	Green	1.8	2	1.2	1.43
5350T7LC	Yellow	1.9	2	.5	1.43
5352T1-5VLC	Red	5.0	3.5	2.0	1.43
5352T3-5VLC	Amber	5.0	3.5	4.0	1.43
5352T5-5VLC	Green	5.0	3.5	2.0	1.43



### CIRCUIT BOARD INDICATORS SERIES 5380

**FEATURES:** Block mounting, height and spacing alignment saves assembly cost and time. Super brite, high intensity light output, diffused lens. Built-in resistor chip operates off 5V supply without external resistor. Standoffs prevent flux entrapment. Housing: Black nylon, UL94V-0.

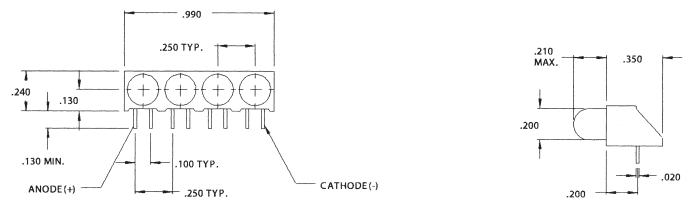
Cat. No.	Lens Colour	Forward		Lumen mcd	Net Price
		Volts	mA		
5380E1	Red	1.7	20	3.0	\$ .78
5380H5	Green	2.2	20	30.0	.78
5380H7	Yellow	2.1	20	25.0	.78
5380H1-5V	Red	5.0	10	5.5	1.09
5380H3-5V	Amber	5.0	10	7.0	1.09
5380H5-5V	Green	5.0	12	10.0	1.09



### MINIATURE CIRCUIT BOARD INDICATORS T1 (3MM) LED BLOCK ASSEMBLY SERIES 5600F, 5602F

**FEATURES:** Small T-1 lamp pre-assembled into nylon plastic block. Height and spacing alignment, saves assembly cost. High light output—diffused lens. Low current—only 2mA. Built-in resistor chip operates off 5 volt supply without external resistor. Standoffs prevent flux entrapment. Housing: Black nylon, UL94V-0.

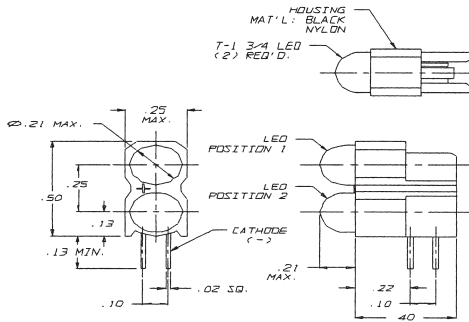
Cat. No.	Lens Colour	Forward		Lumen mcd	Net Price
		Volts	mA		
5600F1	Red	2.0	10	6.0	\$ .75
5600F5	Green	2.2	20	12.0	.75
5600F7	Yellow	2.1	20	20.0	.75
5600F3	Amber	2.0	10	5.0	.78
5602F1-5V	Red	5.0	10	8.0	1.09
5602F3-5V	Amber	5.0	10	8.0	1.09
5602F5-5V	Green	5.0	12	8.0	1.09



### CIRCUIT BOARD QUAD ASSEMBLY INDICATORS SERIES 5640H

**FEATURES:** Quad assemblies with our T-1¼ LEDs allowing for easy installation—assures matched height and center to center spacing—reduces assembly time and cost. Low current—only 2mA. High light output and diffused lenses. Standoff prevent flux entrapment. Housing: Black nylon, UL94V-0.

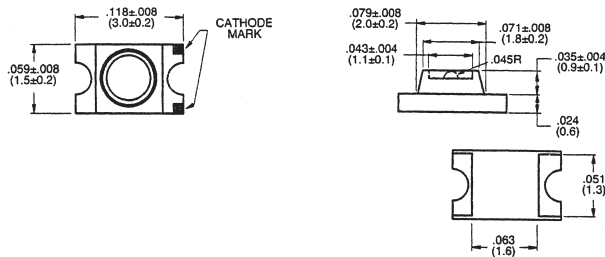
Cat. No.	Lens Colour	Forward		Lumen mcd	Net Price
		Volts	mA		
5640H1	Red	2.0	10.0	6.3	\$3.34
5640H3	Amber	2.0	10.0	10.0	3.34
5640H5	Green	2.2	10.0	10.0	3.34



## CIRCUIT BOARD RIGHT ANGLE 2 HIGH LED ASSEMBLIES SERIES 5670H

**FEATURES:** Dual block mounting allows 2 LEDs in same board area. Single block mounting-height and spacing alignment, saves assembly cost. Super brite LEDs, high light output, diffused lens. Low current, only 2mA needed. Built-in resistor chip operates off 5 volt supply without external resistor. Standoffs prevent flux entrapment. Housing: Black nylon, UL94V-0.

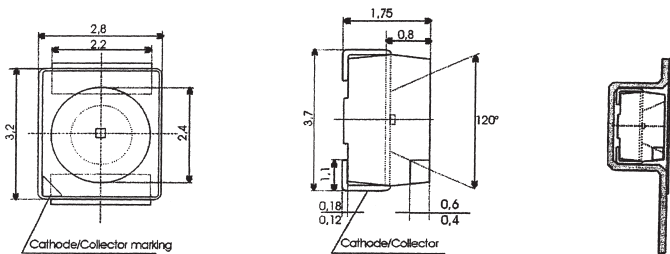
Cat. No.	Lens Colour	Forward		Lumen mcd	Net Price
		Volts	mA		
5670H;1	Red/Red	2.0	20.0	30.0	<b>\$1.80</b>
5670H3;3	Amber/Amber	2.0	20.0	20.0	<b>1.80</b>
5670H5;3	Green/Green	2.2	20.0	30.0	<b>1.80</b>
5670H7;3	Yellow/Yellow	2.1	20.0	25.0	<b>1.80</b>



## 1206 SURFACE MOUNT LEDS SERIES CMDA1

**FEATURES:** Tape and reel packaged for high speed auto insertion. Convection and vapor-phase reflow compatible. Industry standard 1206 package. Consistent high brightness. Integral lensing for narrow angle light dispersion. Bi-colour available. Ideal for use with Chicago Miniature Bright Pipe Optical Light Pipes. Stringent process controls assure quality. Extensive qualification testing to meet strictest requirements. Designed to permit easy post-reflow solder joint inspection. Package type: Single.

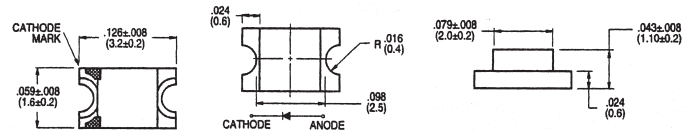
Cat. No.	Emitted Colour	Lens Colour	Forward		Lumen mcd	Net Price
			Volts	mA		
◊ CMDA1AY7A1X	Green	Clear	2.1	20	38.0	<b>\$.22</b>
◊ CMDA1CY7A1X	Yellow	Clear	2.0	20	18.0	<b>.22</b>
◊ CMDA1BR7A1X	Red	Clear	2.0	20	6.0	<b>.30</b>
◊ CMDA1DR7A1X	Red	Clear	1.7	20	30.0	<b>.22</b>
◊ CMDA1AB7A1X	Blue	Clear	3.8	20	33.0	<b>2.02</b>
◊ CMDA1BA7A1X	Amber	Clear	2.0	20	73.0	<b>.28</b>
◊ CMDA1AR7A1X	Red	Clear	2.1	20	85.0	<b>.28</b>
◊ CMDA1DY7A1X	Yellow	Clear	2.0	20	81.0	<b>.28</b>



## SURFACE MOUNT LEDS SERIES CMDA4

**FEATURES:** Tape and reel packaged for high speed auto insertion. Convection and vapor-phase reflow compatible. Industry standard PLCC (Top LED) package. Consistent high brightness. Bi-colour available. Ideal for use with Chicago Miniature Bright Pipe Optical Light Pipes. Stringent process controls assure quality. Extensive qualification testing to meet strictest requirements. Designed to permit easy post-reflow solder joint inspection. Package type: Single.

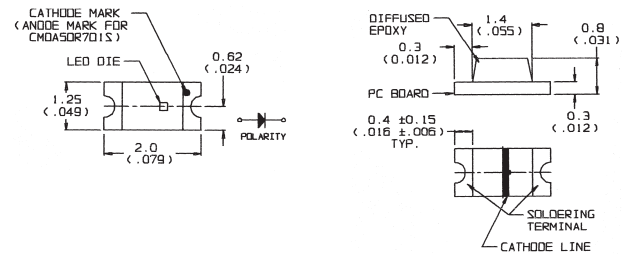
Cat. No.	Emitted Colour	Lens Colour	Forward		Lumen mcd	Net Price
			Volts	mA		
◊ CMDA4AY7A1X	Green	Clear	2.1	20	28.0	<b>\$.52</b>
◊ CMDA4CY7A1X	Yellow	Clear	2.0	20	10.0	<b>.47</b>
◊ CMDA4BR7A1X	Red	Clear	2.1	20	20.0	<b>.62</b>
◊ CMDA4DR7A1X	Red	Clear	1.7	20	40.0	<b>.62</b>
◊ CMDA4AW7A1X	White	Clear	3.6	20	150.0	<b>3.97</b>
◊ CMDA4BB7A1X	Blue	Clear	3.8	20	55.0	<b>2.25</b>
◊ CMDA4BA7A1X	Amber	Clear	2.0	20	67.0	<b>1.17</b>
◊ CMDA4AR7A1X	Red	Clear	2.0	20	67.0	<b>1.17</b>
◊ CMDA4DY7A1X	Yellow	Clear	2.0	20	127.0	<b>.85</b>



## 1206 SURFACE MOUNT LEDS SERIES CMDA2

**FEATURES:** Tape and reel packaged for high speed auto insertion. Convection and vapor-phase reflow compatible. Industry standard 1206 package. Consistent high brightness. Bi-colour available. Ideal for use with Chicago Miniature Bright Pipe Optical Light Pipes. Stringent process controls assure quality. Extensive qualification testing to meet strictest requirements. Designed to permit easy post-reflow solder joint inspection. Package type: Single.

Cat. No.	Emitted Colour	Lens Colour	Forward		Lumen mcd	Net Price
			Volts	mA		
◊ CMDA2DR7D1S	Red	White Diffused	1.8	20	17.0	<b>\$.22</b>
◊ CMDA2BR7D1S	Red	White Diffused	2.1	20	10.0	<b>.22</b>
◊ CMDA2CY7D1S	Yellow	White Diffused	2.1	20	8.0	<b>.22</b>
◊ CMDA2AY7D1S	Green	White Diffused	2.2	20	15.0	<b>.22</b>
◊ CMDA2CB7D1S	Blue	White Diffused	3.4	20	55.0	<b>2.50</b>
◊ CMDA2AG7D1S	Green	White Diffused	3.4	20	145.0	<b>2.50</b>
◊ CMDA2AR7D1S	Red	White Diffused	1.9	20	90.0	<b>.28</b>
◊ CMDA2BA7D1S	Amber	White Diffused	1.9	20	90.0	<b>.28</b>
◊ CMDA2DY7D1S	Yellow	White Diffused	1.9	20	90.0	<b>.28</b>



## 0805 SURFACE MOUNT LEDS SERIES CMDA5

**FEATURES:** Tape and reel packaged for high speed auto insertion. Convection and vapor-phase reflow compatible. Industry standard 0805 package. Consistent high brightness. Ideal for use with Chicago Miniature Bright Pipe Optical Light Pipes. Stringent process controls assure quality. Extensive qualification testing to meet strictest requirements. Designed to permit easy post-reflow solder joint inspection. Package type: Single.

Cat. No.	Emitted Colour	Lens Colour	Forward		Lumen mcd	Net Price
			Volts	mA		
◊ CMDA5DR7D1S	Red	Clear Diffused	1.8	20	17.0	<b>\$.22</b>
◊ CMDA5BR7D1S	Red	Clear Diffused	2.0	20	10.0	<b>.22</b>
◊ CMDA5CY7D1S	Yellow	Clear Diffused	2.1	20	8.0	<b>.22</b>
◊ CMDA5AY7D1S	Green	Clear Diffused	2.2	20	15.0	<b>.22</b>
◊ CMDA5CG7D1Z	Green	Clear Diffused	2.1	20	6.4	<b>.22</b>
◊ CMDA5AR7D1S	Red	Clear Diffused	2.1	20	90.0	<b>.25</b>
◊ CMDA5AG7D1S	Green	Clear Diffused	3.4	20	14.5	<b>.25</b>
◊ CMDA5BA7D1S	Amber	Clear Diffused	1.9	20	90.0	<b>.25</b>
◊ CMDA5DY7D1S	Yellow	Clear Diffused	1.9	20	90.0	<b>.25</b>
◊ CMDA5CB7D1S	Blue	Clear Diffused	3.4	20	55.0	<b>.25</b>
◊ CMDA5AW7C1X	White	Clear Diffused	3.6	20	110.0	<b>.25</b>