

## LUXO WAVE+, WAVE+ UV AND WAVE+ ESD SERIES MAGNIFIERS

A WAVE+ magnifier combines innovative product design and functional engineering to achieve a superior product. Its 3.5 diopter lens (1.85X), measuring 6.75" x 4.5", delivers a crisp, distortion-free viewing window. Precision-balanced arms maintain the position they're placed in and superior quality "necks" permit the head of the magnifier to be angled properly. Two 13-watt quad fluorescent tubes give excellent illumination. Accessory lenses allow inspection at magnification levels up to 4.35X. Available with ESD (electrostatic discharge) and anti-reflective (A/R) lenses that disperse glare from other lights in the immediate environment and also dissipate static electricity. Wave + magnifiers are also available in ultraviolet (UV) versions. **ESD models available in black only. Standard models available in black or grey. Add -BLK for black and -GRY for grey to Cat. No. when ordering.**

Cat. No.	Description	Net Price
<b>45" ARM REACH</b>		
WAVE+/A	Standard	\$490.05
WAVE+/A-ESD	ESD	831.60
WAVE+/A-UV	UVD	689.40
<b>30" ARM REACH</b>		
WAVE+2/A	Standard	490.05
WAVE+2/A-ESD	ESD	831.60
WAVE+2/A-UV	UV	689.40



## LUXO IFM ILLUMINATED MAGNIFIERS

Recently upgraded to a stamped steel shade with handle, this medium-duty illuminated magnifier is a smart economical choice for tight budgets. This magnifier comes in 3 or 5 diopter models with 45" or 30" arm. It comes with a clamp, built-in starter and 22 watt fluorescent tube. Available in light grey only.

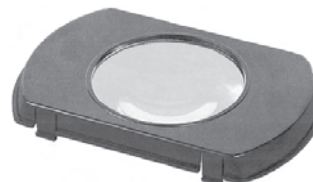
Cat. No.	Net Price
<b>45" ARM REACH</b>	
IFM-1/A-3D	\$153.00
IFM-1/A-5D	172.80
<b>30" ARM REACH</b>	
IFM-1/A-3D	153.00
IFM-1/A-5D	172.80



## LUXO KFM ILLUMINATED MAGNIFIERS

Designed for visual accuracy in the assembling of miniature components for inspection and quality control, for repair of small parts, reading numbers and fine print. Features the Bi-Convex precision ground lens, 5" diameter, mounted on Luxo spring-balanced arm with a 45" reach or 30" reach. Provisions built-in for clip-on lens attachments to increase magnification. Arm can be rotated around its stand through a full circle on the horizontal plane, and can be moved individually through an arc of 150° in any vertical plane. Single button starter switch. 22W circline lamp (included). "A" mounting bracket (included). **Models available in black, white or light grey. Add -BK for black, -WT for white and -LG for light grey to Cat. No. when ordering.**

Cat. No.	Net Price
<b>45" ARM REACH</b>	
KFM-1/A-3D	\$283.50
KFM-1/A-5D	305.78
<b>30" ARM REACH</b>	
KFM-2/A-3D	283.50
KFM-2/A-5D	292.50



## AUXILIARY LENSES FOR WAVE+ LAMPS

Auxiliary 4-diopter and 8-diopter lenses snap readily into underside of the tight housing for greater magnification—up to 2-3/4 power.

Cat. No.		Net Price
4D AUX-LENS WAVE+	4-diopter	\$97.20
8D AUX-LENS WAVE+	8-diopter	97.20



## AUXILIARY LENSES FOR KFM LAMPS

These lenses clip onto underside of magnifier shade to combine with permanently installed 3 or 5 diopter lens for increased magnification.

Cat. No.		Net Price
4D AUX-LENS KFM	4-diopter	\$108.00
8D AUX-LENS KFM	8-diopter	108.00
3D RPL-LENS KFM	3-diopter	56.70
5D RPL-LENS KFM	5-diopter	75.60



## SWING-AWAY AUXILIARY LENS FOR LUXO MAGNIFIERS (LFM/KFM/WAVE+)

Additional 10-diopter swing-away auxiliary lens for all Luxo magnifiers.

Cat. No.		Net Price
10D SWING-LENS	10-diopter	\$129.60



BRACKET A



BRACKET B



BRACKET C



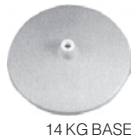
FLOOR STAND WITH CASTERS



DRAFTING BOARD BRACKET



11 KG BASE



14 KG BASE

## LUXO ACCESSORIES

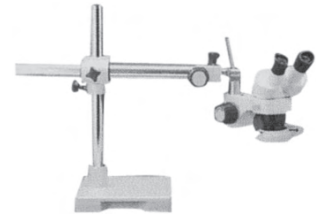
	Colour	Net Price
<b>A-BRACKET—EDGE MOUNT</b>		
A-BRACKET LG	Light Grey	\$21.60
A-BRACKET BK	Black	21.60
A-BRACKET WT	Almond	21.60
<b>B BRACKET—WALL MOUNT (SCREW TO ANY SURFACE)</b>		
B-BRACKET LG	Light Grey	28.13
B-BRACKET BK	Black	28.13
B-BRACKET WT	Almond	28.13
<b>C-BRACKET—SURFACE MOUNT (SCREWS TO ANY HORIZONTAL SURFACE)</b>		
C-BRACKET LG	Light Grey	28.13
C-BRACKET BK	Black	28.13
C-BRACKET WT	Almond	28.13
<b>11 KG BASE—FOR USE WITH LUXO INDUSTRIAL TASK LIGHTS (30" ARM REACH)</b>		
11 KG BASE LG	Light Grey	124.20
11 KG BASE BK	Black	124.20
11 KG BASE WT	Almond	124.20
<b>14 KG BASE—FOR USE WITH LUXO MAGNIFIERS (30" ARM REACH)</b>		
14 KG BASE LG	Light Grey	157.95
14 KG BASE BK	Black	157.95
14 KG BASE WT	Almond	157.95
<b>DRAFTING BOARD BRACKET</b>		
F-BRACKET LG	Light Grey	57.38
F BRACKET BK	Black	57.38
F-BRACKET WT	Almond	57.38
<b>FLOOR STAND WITH CASTERS</b>		
50036 LG	Light Grey	160.00
50036 BK	Black	160.00
50036 WT	Almond	160.00

## MICROSCOPE SYSTEMS

Luxo offers a wide selection of complete system packages to suit your needs. Here are a sample of popular packages. Luxo can assemble a customized system to match your requirements.



MICROLUX K2A



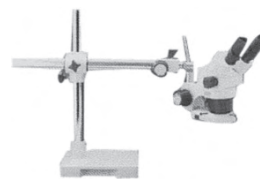
150-FL

### LUXO MICROLUX/K2A WITH 5W LIGHTS

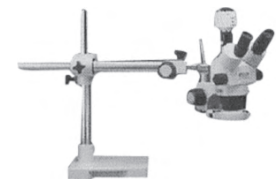
The Luxo Microlux/K2A with 5w lights comes standard with Stereoscopic 1X-2X microscope, two 10X eyepieces, two 5W halogen lights, and a K2 arm with heavy base.

### LUXO MICROSCOPE SYSTEM 150-FL

The Luxo System 150-FL model comes standard with Stereoscopic 1X-2X microscope, two 10X eyepieces, a fluorescent ring light and boom stand with base.



250-FL



350-FLX

### LUXO MICROSCOPE SYSTEM 250-FL

The Luxo System 250-FL model comes standard with Binocular Stereo-Zoom microscope, two 10X eyepieces, a fluorescent ring light, and boom stand with base.

### LUXO MICROSCOPE SYSTEM 350-FLX

The Luxo System 350-FLX model comes standard with Trinocular Stereo-Zoom microscope, two 10X eyepieces, a fluorescent ring light, and boom stand with base. A CCD-camera and frame grabber kit allows you to transfer images to your computer.

Cat. No.		Net Price
18555	Microlux K2A	\$1806.30
18722	150-FL	2175.00
18712	250-FL	3296.70
18718FG2	350-FLX with frame grabber	8526.12

## LUXO MICROSCOPE ACCESSORIES

Cat. No.		Net Price
LFOD150	Fiber optic illuminator 150W	\$751.50
LFORL-CR	Ring light for LFOD150	891.40
LFODG	Dual gooseneck for LFOD150	910.00
LFOSG	Single gooseneck for LFOD150	378.00
18731	Boom stand with clamp	1065.00
18732	Articulated arm stand with clamp	1198.50