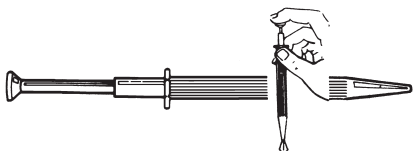




LENLINE INSPECTION MIRROR

Inspection mirror with double ball joints, adjusts to any angle. Chrome plated steel finish. Telescoping. Mirror Dia.: 31 mm. Length of handle: 150mm.

| Cat. No. | Net Price |
|----------|-----------|
| 08-390 | \$2.29 |



LENLINE PICK-UP TOOL

All metal pick-up tool. The spring claws make it easy to retrieve any small parts from hard to reach areas. Length: 120mm. **70-7059** extra long, flexible cable pick-up tool with spring claws. Length: 425mm.

| Cat. No. | Description | Net Price |
|----------|-------------------------|-----------|
| 70-171 | Pick-up tool | \$3.57 |
| 70-7059 | Extra long pick-up tool | 2.86 |



LENLINE MAGNETIC PICK-UP TOOL

Magnetic pick-up tool with pocket clip. Telescoping. Length: 140mm.

| Cat. No. | Net Price |
|----------|-----------|
| 70-7064A | \$3.21 |



70-450

LENLINE ERASING AND BURNISHING BRUSH

Designed for a variety of industrial applications. Adjustable for reaching corners, crevices and other hard places. Stiff cleaning action or soft brushing action depending on extension. Removes foreign matter from various surfaces. Cleans contacts, PCB's removes oxidization and restores contact making surfaces to new condition.

| Cat. No. | Description | Net Price |
|----------|---|-----------|
| 70-450 | Propelling Pencil with fibre glass eraser | \$6.43 |
| 70-456 | Fibre glass refill for 70-450. Pkg. of 12 | 8.21 |



200F

LENLINE CONTACT BURNISHING TOOL

A pocket size burnishing tool fitted in a handsome pen type case. It is of great value in keeping contacts on relays, solenoids, brushes, thermostats, and other electrical devices smooth and free from carbon-like deposits which would otherwise leave them inoperative. The microfine finish of the burnisher element assures mild, controlled cleaning action which polishes the surface as it cleans. Insulated case permits use on live contacts. Spare burnisher element and "Slim-Grip" burnisher included in the case. "Slim-Grip" insulating handle can be reversed when element becomes worn.

| Cat. No. | Description | Net Price |
|----------|--|-----------|
| 180K | Contact Burnishing Tool | \$25.71 |
| 101F | Replaceable blade (Per 6) | 2.86 |
| 200F | "Slim Grip" mini burnisher-reversible blade. | 3.00 |



LENLINE INSULATED IC PULLER

For placing and removing IC components. 102 mm long.

| Cat. No. | Net Price |
|----------|-----------|
| 08-609 | \$1.50 |



LENLINE PLCC PULLER

For efficient and safe removal of PLCC type components.

| Cat. No. | Net Price |
|----------|-----------|
| 08-610 | \$4.64 |



7711



7701



7702



7703



7501

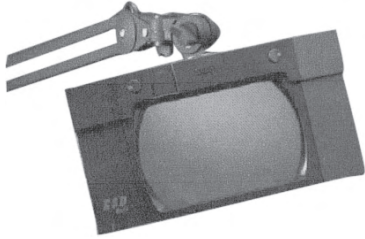


7501L

LENLINE ILLUMINATED MAGNIFIERS WITH COMFORT LIGHTING

| Cat. No. | Lens. Dia. | Magnification | Net Price |
|----------|------------|---------------|-----------|
| 7711 | 110mm | 2.5 X | \$7.50 |
| 7701 | 90mm | 2.5 X | 6.43 |
| 7702 | 75mm | 3.5 X | 5.36 |
| 7703 | 50mm | 4.5 X | 4.21 |
| 7501 | 50mm | 4.5 X | 4.21 |
| 7501L | 90mm | 2.5 X | 6.43 |

NOTE: Uses 2 "C" cell batteries (not included).



LUXO WAVE+, WAVE+ UV AND WAVE+ ESD SERIES MAGNIFIERS

A WAVE+ magnifier combines innovative product design and functional engineering to achieve a superior product. Its 3.5 diopter lens (1.85X), measuring 6.75" x 4.5", delivers a crisp, distortion-free viewing window. Precision-balanced arms maintain the position they're placed in and superior quality "necks" permit the head of the magnifier to be angled properly. Two 13-watt quad fluorescent tubes give excellent illumination. Accessory lenses allow inspection at magnification levels up to 4.35X. Available with ESD (electrostatic discharge) and anti-reflective (A/R) lenses that disperse glare from other lights in the immediate environment and also dissipate static electricity. Wave + magnifiers are also available in ultraviolet (UV) versions. **ESD models available in black only. Standard models available in black or grey. Add -BLK for black and -GRY for grey to Cat. No. when ordering.**

| Cat. No. | Description | Net Price |
|----------------------|-------------|-----------|
| 45" ARM REACH | | |
| WAVE+/A | Standard | \$490.05 |
| WAVE+/A-ESD | ESD | 831.60 |
| WAVE+/A-UV | UVD | 689.40 |
| 30" ARM REACH | | |
| WAVE+2/A | Standard | 490.05 |
| WAVE+2/A-ESD | ESD | 831.60 |
| WAVE+2/A-UV | UV | 689.40 |



LUXO IFM ILLUMINATED MAGNIFIERS

Recently upgraded to a stamped steel shade with handle, this medium-duty illuminated magnifier is a smart economical choice for tight budgets. This magnifier comes in 3 or 5 diopter models with 45" or 30" arm. It comes with a clamp, built-in starter and 22 watt fluorescent tube. Available in light grey only.

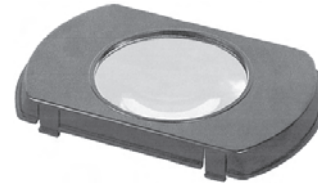
| Cat. No. | Net Price |
|----------------------|-----------|
| 45" ARM REACH | |
| IFM-1/A-3D | \$153.00 |
| IFM-1/A-5D | 172.80 |
| 30" ARM REACH | |
| IFM-1/A-3D | 153.00 |
| IFM-1/A-5D | 172.80 |



LUXO KFM ILLUMINATED MAGNIFIERS

Designed for visual accuracy in the assembling of miniature components for inspection and quality control, for repair of small parts, reading numbers and fine print. Features the Bi-Convex precision ground lens, 5" diameter, mounted on Luxo spring-balanced arm with a 45" reach or 30" reach. Provisions built-in for clip-on lens attachments to increase magnification. Arm can be rotated around its stand through a full circle on the horizontal plane, and can be moved individually through an arc of 150° in any vertical plane. Single button starter switch. 22W circline lamp (included). "A" mounting bracket (included). **Models available in black, white or light grey. Add -BK for black, -WT for white and -LG for light grey to Cat. No. when ordering.**

| Cat. No. | Net Price |
|----------------------|-----------|
| 45" ARM REACH | |
| KFM-1/A-3D | \$283.50 |
| KFM-1/A-5D | 305.78 |
| 30" ARM REACH | |
| KFM-2/A-3D | 283.50 |
| KFM-2/A-5D | 292.50 |



AUXILIARY LENSES FOR WAVE+ LAMPS

Auxiliary 4-diopter and 8-diopter lenses snap readily into underside of the tight housing for greater magnification—up to 2-3/4 power.

| Cat. No. | Description | Net Price |
|-------------------|-------------|-----------|
| 4D AUX-LENS WAVE+ | 4-diopter | \$97.20 |
| 8D AUX-LENS WAVE+ | 8-diopter | 97.20 |



AUXILIARY LENSES FOR KFM LAMPS

These lenses clip onto underside of magnifier shade to combine with permanently installed 3 or 5 diopter lens for increased magnification.

| Cat. No. | Description | Net Price |
|-----------------|-------------|-----------|
| 4D AUX-LENS KFM | 4-diopter | \$108.00 |
| 8D AUX-LENS KFM | 8-diopter | 108.00 |
| 3D RPL-LENS KFM | 3-diopter | 56.70 |
| 5D RPL-LENS KFM | 5-diopter | 75.60 |