

Simpson Panel Meters & Shunts

MANU
442
CODE

Cat. No.	Input	Output	Relays	Excitation	Net Price
RESISTANCE CONTROLLERS					
⊕ H335-1-81-0-1-0	200 ohm	None	One	None	\$277.00
⊕ H335-1-82-0-1-0	2K ohm	None	One	None	277.00
⊕ H335-1-83-0-1-0	20K ohm	None	One	None	277.00
⊕ H335-1-84-0-1-0	200K ohm	None	One	None	277.00
TEMPERATURE CONTROLLERS					
⊕ H340-1-91-0-0-0	Type J	None	None	None	228.00
⊕ H340-1-91-0-1-0	Type J	None	One	None	271.00
⊕ H340-1-91-0-2-0	Type J	None	Two	None	293.00
⊕ H340-1-92-0-2-0	Type K	None	Two	None	293.00
⊕ H340-1-93-0-2-0	RTD PT 100	None	Two	None	304.00

*Current transformers are available 50A-1000A.

If other options are required, please configure from the above chart and call Electro Sonic for pricing.



MINI & MINI-MAX DIGITAL PANEL METERS

Simpson's Mini-Max series provide high quality, accuracy, and reliability. M235 and M245 have a 0.5 LCD display and are available with a bright red negative backlight option. M235 has a 3-1/2 digit display and M245 has a 4-1/2 digit display. M240 temperature meters are 4 digit LED displays. The Mini-Max features a user-selectable decimal point and requires a 0.88" x 2.68" panel cutout with 2.36" depth. Units feature a unique mounting bracket for vertical or horizontal stacking of multiple indicators.

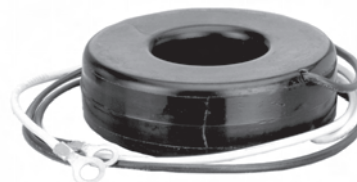
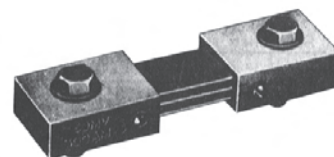
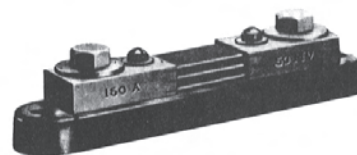
Cat. No.	Input	Backlight	Net Price
DC VOLTAGE			
⊕ M235-0-0-11-0	200mV	None	\$106.00
⊕ M235-0-0-12-0	2V	None	106.00
⊕ M235-0-0-13-0	20V	None	106.00
⊕ M235-0-0-14-0	200V	None	106.00
⊕ M235-1-0-11-0	200mV	Negative Red	129.00
⊕ M235-1-0-12-0	2V	Negative Red	129.00
⊕ M235-1-0-13-0	20V	Negative Red	129.00
⊕ M235-1-0-14-0	200V	Negative Red	129.00
⊕ M245-0-0-11-0	200mV	None	141.00
⊕ M245-0-0-12-0	2V	None	141.00
⊕ M245-0-0-13-0	20V	None	141.00
⊕ M245-0-0-14-0	200V	None	141.00
⊕ M245-1-0-11-0	200mV	Negative Red	164.00
⊕ M245-1-0-12-0	2V	Negative Red	164.00
⊕ M245-1-0-13-0	20V	Negative Red	164.00
⊕ M245-1-0-14-0	200V	Negative Red	164.00
DC CURRENT			
⊕ M235-0-0-24-0	200mA	None	106.00
⊕ M235-0-0-25-0	2A	None	106.00
⊕ M235-1-0-24-0	200mA	Negative Red	129.00
⊕ M235-1-0-25-0	2A	Negative Red	129.00
⊕ M245-0-0-24-0	200mA	None	141.00
⊕ M245-0-0-25-0	2A	None	141.00
⊕ M245-1-0-24-0	200mA	Negative Red	164.00
⊕ M245-1-0-25-0	2A	Negative Red	164.00
AC VOLTAGE (TRMS)			
⊕ M235-0-0-34-0	200V	None	147.00
⊕ M235-0-0-35-0	750V	None	147.00
⊕ M235-1-0-34-0	200V	Negative Red	170.00
⊕ M235-1-0-35-0	750V	Negative Red	170.00
⊕ M245-0-0-34-0	200V	None	147.00
⊕ M245-1-0-34-0	200V	Negative Red	170.00
AC CURRENT (TRMS)			
⊕ M235-0-0-44-0	200mA	None	147.00
⊕ M235-0-0-45-0	2A	None	147.00
⊕ M235-0-0-46-0*	5A	None	147.00
⊕ M235-1-0-44-0	200mA	Negative Red	170.00
⊕ M235-1-0-45-0	2A	Negative Red	170.00
⊕ M235-1-0-46-0*	5A	Negative Red	170.00
⊕ M245-0-0-44-0	200mA	None	182.00
⊕ M245-0-0-45-0	2A	None	182.00
⊕ M245-0-0-46-0*	5A	None	205.00
⊕ M245-1-0-44-0	200mA	Negative Red	205.00
⊕ M245-1-0-45-0	2A	Negative Red	205.00
⊕ M245-1-0-46-0*	5A	Negative Red	205.00

*Scale display and use external current transformer for higher current levels.

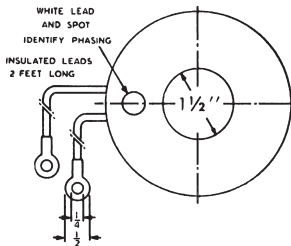
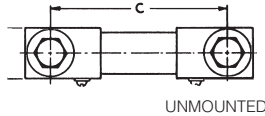
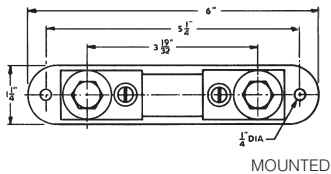
Cat. No.	Input	Backlight	Net Price
DC PROCESS			
⊕ M235-0-0-71-0	4-20mA	None	\$123.00
⊕ M235-0-0-73-0	0-10V	None	123.00
⊕ M235-1-0-71-0	4-20mA	Negative Red	147.00
⊕ M235-1-0-73-0	0-10V	Negative Red	147.00
⊕ M235-0-2-71-0	4-20mA	None	159.00
⊕ M235-1-2-71-0	4-20mA	Negative Red	205.00
⊕ M245-0-0-71-0	4-20mA	None	158.00
⊕ M245-1-0-71-0	4-20mA	Negative Red	194.00
⊕ M245-0-2-71-0	4-20mA	None	422.21
⊕ M245-1-2-71-0	4-20mA	Negative Red	217.00
FREQUENCY			
⊕ M235-0-0-81-0	20-199.9Hz RMS	None	106.00
⊕ M235-0-0-82-0	20-1999Hz RMS	None	106.00
⊕ M235-1-0-81-0	20-199.9Hz RMS	Negative Red	129.00
⊕ M235-1-0-82-0	20-1999Hz RMS	Negative Red	129.00
TEMPERATURE			
⊕ M240-0-91-0-F	J T/C	LED Display	188.00
⊕ M240-0-92-0-F	K T/C	LED Display	188.00
⊕ M240-0-93-0-F	RTD PT100	LED Display	188.00
⊕ M240-0-94-0	mVDC	LED Display	188.00

*Scale display and use external current transformer for higher current levels.

1-800-56-SONIC
www.e-sonic.com



Continued on next page....



EXTERNAL SHUNTS FOR DC AMMETERS

For use with DC panel ammeters with 50 millivolt basic movements. Shunts are supplied with a 5 foot .065 ohm lead set. Calibration is adjusted for the extra resistance. Other lead lengths are available to special order.

Cat. No.	Amps	Dim "C"	Net Price
MOUNTED TYPE			
06700	1	—	\$56.36
06703	5	—	56.36
06704	10	—	56.36
06705	15	—	56.36
06707	25	—	56.36
06709	50	—	56.36
06711	75	—	56.36
06713	100	—	56.36
06714	150	—	56.36
06715	200	—	56.36
UNMOUNTED TYPE			
06500	100	3 1/2"	56.36
06503	150	3 1/2"	60.02
06504	200	3 1/2"	60.02
06505	250	4"	60.02
06506	300	4"	60.02
06507	400	4"	74.32
06508	500	4"	85.79

TOROIDAL CURRENT TRANSFORMERS FOR AC AMMETERS

For use with AC panel ammeters with 5 ampere basic movements. The primary is formed by passing the primary conductor through the window in the toroid the number of times indicated in the table. Secondary leads are 2 ft. in length. One lead is white and phasing is identified in that the secondary current leaving the transformer by this lead will be in phase with a primary current entering the transformer on the side identified with a white spot.

Cat. No.	Primary Amps	Secondary Amps	Turns Ratio	Capacity	O.D.	Net Price
01293	50	5	10:1	2VA	3 1/4"	\$42.07
01306	75	5	15:1	2VA	3 1/4"	44.23
01297	100	5	20:1	2VA	3 1/4"	43.40
01298	150	5	30:1	2VA	3 1/4"	43.40
01299	200	5	40:1	2VA	3 1/4"	43.40
01313	250	5	50:1	2VA	3 1/4"	43.40
01300	300	5	60:1	2VA	3 1/4"	43.40
01305	400	5	80:1	2VA	3 1/4"	43.40
01301	500	5	100:1	5VA	3 1/4"	43.40
02303	600	5	120:1	5VA	3 1/4"	43.40
02459	750	5	150:1	5VA	3 1/4"	56.00
02304	1000	5	200:1	5VA	3 1/4"	79.00

GIVING YOU WHAT YOU WANT!



- SPEED
- PRODUCTS
- INFORMATION
- PROCUREMENT
- LINKS

IT'S ALL HERE... www.e-sonic.com