

### PRINTED CIRCUIT TEST JACKS

Double entry design; probe inserts from either end of jack. Closed entry construction will not accept probes larger than .084", will contact down to 074". Closed bottom construction keeps jack from fouling with solder or flux. Locking ears hold jack firmly in board until soldered. Precise dimensions allow for automated assembly on boards. **BODY:** Molded mylon per MIL-P-20693. **SPRING:** Beryllium copper. **MOUNTING:** Mounts in .052" holes. **DATA:** Insertion force: 30 oz. max. Withdraw force: 8 oz. min. with .080" (±.100") probe. **RATING:** Operating voltage 1,500 volts, 60 cps RMS, sea level. 350 volts, 60 cps RMS at 50,000 feet. 5 amps aC max. current rating. Contact resistance 20 millivolt drop max. at special current at 25°C.

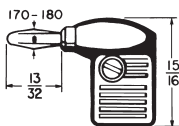
Cat. No.	Colour	Length (L)	Plating	Board Thickness	Net Price
<b>COMMERCIAL TYPES</b>					
430-101	White	.203"	Gold	3/16"	\$1.43
430-102	Red	.203"	Gold	3/16"	1.39
430-103	Black	.203"	Gold	3/16"	1.39
430-104	Green	.203"	Gold	3/16"	1.43
430-106	Orange	.203"	Gold	3/16"	1.39



### INTERCHANGEABLE TIP TEST LEAD KIT

**PROD HANDLE:** Molded ABS. **PROD TIP:** Brass, nickel plated. **BANANA PLUG:** Molded polycarbonate handle. Beryllium copper spring, nickel plated. **WIRE:** #18 PVC insulated, extra-flexible, kink resistant. Nominal length 48", supplied as a pair, one Red and one Black. **DESCR.:** Banana plug test lead kit, with additional parts for universal attachment to various instrument input connectors. Adapters plug on Banana Plug end.

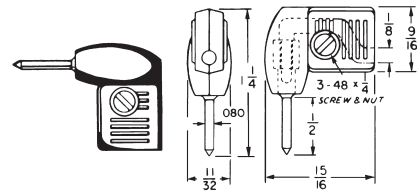
Cat. No.	Description	Net Price
610P	Tip Prods	\$32.00



### METER BANANA PLUG

**HANDLE:** Molded Phenolic plastic, Red and Black. **PLUG:** Brass, nickel plated. **SPRING:** Four-leaved phosphor bronze, nickel plated. **RATING:** 10 Amps AC for 10°C Temp. rise, continuous duty. **DESCR.:** Molded in two halves for easy assembly with screw and nut. Fits standard banana jacks.

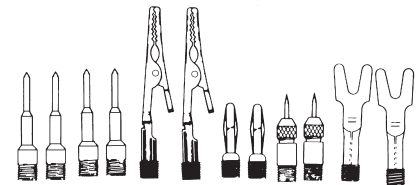
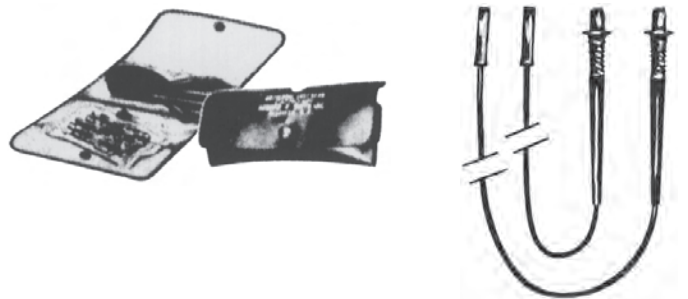
Cat. No.	Colour	Net Price
255-102	Red	\$3.65
255-103	Black	3.65



### METER TIP PLUG

**HANDLE:** Molded Phenolic plastic. Red and Black. **PLUG:** Brass, nickel plated. **RATING:** 12 Amps AC for 10°C Temp. rise, continuous duty. **DESCR.:** Molded in two halves for easy assembly with screw and nut. Fits standard phone tip jacks.

Cat. No.	Colour	Net Price
235-102	Red	\$2.22
235-103	Black	2.22



### "UNIVERSAL" TEST LEAD KIT COMPLETELY INTERCHANGEABLE

**DESCR.:** An indispensable kit for every technician, laboratory, production control station and repair/service facility. A pair of ribbed safety-grip test prod, permanently fixed on one end. Meter ends and prods have modular connectors into which fit a complete assortment of instrument input accessories. One pair of leads and accessories are supplied in a handy folding vinyl pouch. **WIRE:** #18 PVC insulated; extra-flexible kink resistant. Nominal length 48", one Red and one Black.

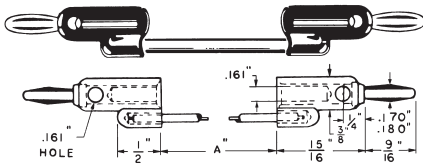
Cat. No.	Net Price
699	\$40.52



### STANDARD ALLIGATOR CLIP BOTH ENDS

**CLIPS:** Steel, Cadmium plated (No. 300). **BOOTS:** Vinyl plastic. Boot colors match wire. **RATING:** 5 Amps AC for 10°C Temp. rise, continuous duty. **WIRE:** 10 KV PVC flexible wire, 65 strands #36 copper, #18 AWG, insulated to an O.D. of .140". Available in Red or Black.

Cat. No.	Length	Net Price
<b>RED</b>		
1596-12-102	12"	\$4.99
1596-24-102	24"	5.98
1596-36-102	36"	6.98
1596-48-102	48"	7.05
1596-60-102	60"	7.55
<b>BLACK</b>		
1596-12-103	12"	4.99
1596-24-103	24"	5.98
1596-36-103	36"	6.98
1596-48-103	48"	7.05
1596-60-103	60"	7.55

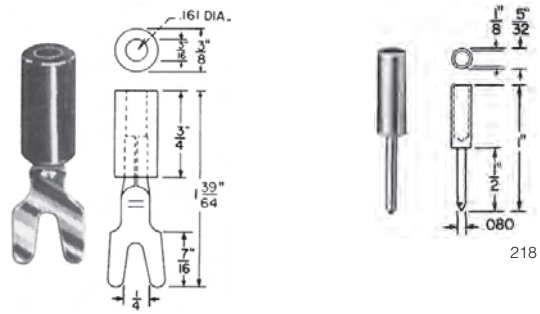


### CROSS PATCH BANANA PLUG CORD

**HANDLE:** Molded Butyrate, per Fed. Spec. L-P349A, Type 3, Class MS. Red, Black, Yellow, Green, Blue, White. **BODY:** Brass, nickel plated. **SPRING:** Four-leaved beryllium copper, nickel plated. **WIRE:** 10 KV PVC flexible wire, 65 strands #36 copper, #18 AWG, insulated to an O.D. of .140". **DESCR.:** Interconnects unlimited number of multiple circuits. Positive, lasting contact for all banana plugs on top and side.

#### WITH PLUG SPRING 3/16" LONG

Cat. No.	Colour	Length (A)	Net Price
1510-08-102	Red	8"	\$9.42
1510-08-103	Black		9.42
1510-08-104	Green		9.42
1510-12-102	Red	12"	10.08
1510-12-103	Black		10.08
1510-24-102	Red	24"	11.80
1510-24-103	Black		11.80
1510-36-102	Red	36"	12.28
1510-36-103	Black		12.28



### INSULATED SPADE LUG

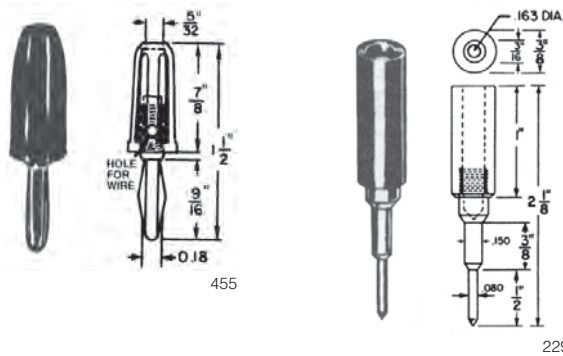
**HANDLE:** Molded Butyrate per Fed. Spec. L-P349A, Type 3, Class MS. Red and Black. **LUG:** Steel electro .020 thick. **RATING:** 15 Amp AC for 10°C Temp. rise, continuous duty. **DESCR.:** Tapered slot from 1/4" dia. down to #6 dia. Fits all standard binding posts. Accepts standard banana plugs in rear. Solder bridge for wire connection up to No. 18 AWG.

Cat. No.	Colour	Description	Net Price
218-102	Red	Insulated Spade Lug	\$1.41
218-103	Black	Insulated Spade Lug	1.41

### SOLDER TYPE PHONE TIP

**MATERIAL:** Brass, Nickel Plated. **RATING:** 12 Amps AC for 10°C Temp. rise, continuous duty.

Cat. No.	Type	Net Price
108	Standard	\$ .63



### INSULATED BANANA PLUG SOLDERLESS

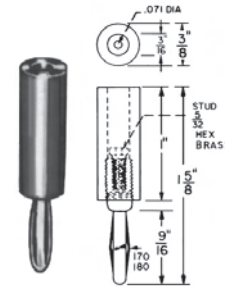
**HANDLE:** Molded Nylon, per MIL-P-20693A. **COLORS:** Red or Black. **PLUG:** Brass, Nickel-plated. **SPRING:** Phosphor bronze, nickel-plated. **RATING:** 15 Amps AC for 10°C Temp. rise, continuous duty. **DESCR.:** Solderless: Wire fits through handle and body of tip then wrapped around screw portion. Inserts flush to handle, no metal exposed, eliminates possibility of shock or grounding. Fits standard banana jacks.

Cat. No.	Colour	Net Price
455-102	Red	\$3.58
455-103	Black	3.58

### INSULATED TIP PLUG HEAVY DUTY TYPE

**HANDLE:** Molded Nylon, per MIL-P-20693A. Red, Black. **PLUG:** Brass, nickel plated. **RATING:** 12 Amps AC for 10°C Temp. rise, continuous duty. **DESCR.:** Large diameter well enables soldering of heavy duty wire directly into plug. Fits standard phone tip jacks.

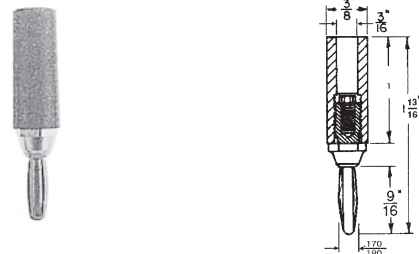
Cat. No.	Colour	Net Price
229-102	Red	\$1.60
229-103	Black	1.60



### INSULATED BANANA PLUG

**HANDLE:** Molded Nylon, per MIL-P-20693A. Red, Black. **PLUG:** brass, nickel-plated. **SPRING:** Four-leaved phosphor bronze, nickel-plated. **RATING:** 15 Amps AC for 10°C Temp. rise, continuous duty. **DESCR.:** Wire can be soldered to brass stud or directly into plug itself. Stud also locks wire to plug for solderless connection. Fits standard banana jacks.

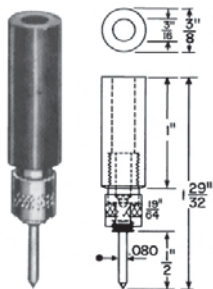
Cat. No.	Colour	Net Price
211-102	Red	\$3.44
211-103	Black	3.44



### INSULATED BANANA PLUGS

**BODY:** Brass, nickel-plated. **SPRING:** Beryllium copper. **RATING:** 15 amps. **HANDLE:** Nylon.

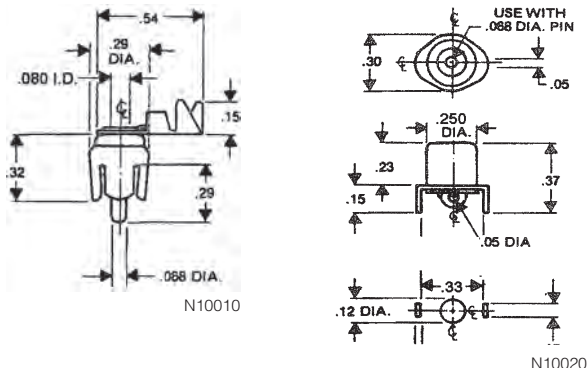
Cat. No.	Colour	Wiring	Net Price
212-102	Red	Stud or Well	\$2.98
212-103	Black	Stud or Well	2.98



### INSULATED TIP PLUG SOLDERLESS

**HANDLE:** Molded Nylon, Red or Black. **PLUG:** Brass, nickel plated. **RATING:** 12 Amps AC for 10°C Temp. rise, continuous duty. **DESCR.:** Solderless: wire fits through body of tip then wrapped around screw portion and tightened with knurled collar. Threaded type. Fits standard phone tip jacks.

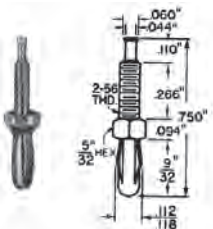
Cat. No.	Colour	Net Price
201-102	Red	\$2.15
201-103	Black	2.15



### MINIATURE PHONE PLUGS AND PHONE JACKS

**MATERIAL:** Bright tin plated steel shell with .125" diameter nickel plated pins. The insulation is low loss Phenolic material.

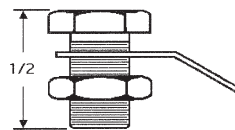
Cat. No.	Description	Net Price
N10010	Miniature Phone Plug	\$1.15
N10020	Miniature Phone Jack	1.15



### MINIATURE BANANA PLUG

**BODY:** Brass, silver plated. **SPRING:** Four-leaved beryllium copper, silver plated. **RATING:** 10 Amps AC for 10°C Temp. rise, continuous duty. **DESCR.:** One piece beryllium copper spring insures positive and lasting contact.

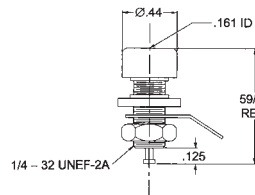
Cat. No.	Net Price
192	\$2.57



### UNINSULATED BANANA JACK

**BODY:** Hex brass, nickel plated. **MOUNTING:** Threaded body held to panel with nut (supplied). **WIRING:** Solders to lug between nut and panel (supplied).

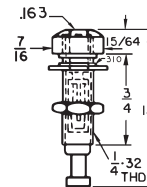
Cat. No.	Head Dia.	Head Height	Body Length	Thread	Net Price
101	3/8	3/32	13/32	1/4-32	\$1.35



### INSULATED BANANA JACK

**HEAD:** Nylon, red, or black. **BODY:** Brass, nickel plated. **RATING:** 15 amps AC for 10°C temperature rise, continuous duty. Voltage 1 KVAC. Capacitance 4.0pf. **DESCRIPTION:** Extruded portion of head and washer provides excellent insulation from panel. Supplied with hex nut, brass tinned lug. Mounts in 5/16" hole in panels up to 1/4" thick. Accepts standard banana plugs.

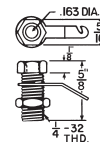
Cat. No.	Colour	Net Price
205-102	Red	\$4.20
205-103	Black	4.20



### INSULATED JACK COMBINATION TYPE

**HEAD:** Nylon, red, black, yellow, green, blue, white. **BODY:** Brass, nickel plated. **SPRING:** Phosphor bronze. **CONTACT:** 12 Amps AC for 10°C Temp. rise, continuous duty. 750 Volts 60 cycle AC continuous working voltage. Capacitance 4.0 mmfd. **DESCR.:** Supplied with hex nut & fibre washer. Accepts standard phone tip plugs or standard banana plugs. Mounts in 5/16" hole in panels up to 1/2" thick.

Cat. No.	Colour	Net Price
206-102	Red	\$2.64
206-103	Black	2.64



### BANANA JACK

**BODY:** Hex brass, nickel plated. **RATING:** 15 Amps AC for 10°C Temp. rise, continuous duty. **DESCR.:** Supplied with hex nut and brass tinned lug. Mounts in 1/4" hole in panels up to 3/8" thick. Accepts standard banana plugs.

Cat. No.	Net Price
109	\$1.67