

PANEL MOUNT LED ASSEMBLIES 5100H AND 5101H WITH 1/4" MOUNTING HOLE 5110F AND 5111F WITH 5/32" MOUNTING HOLE

These assemblies are available with High Bright LEDs, or 5V and 12V LEDs, and come with your choice of either 24 gauge bonded wire leads or wire wrap terminals. **5100H and 5101H series** parts are designed to snap into panel cut outs that are .249/.254 (6.33/6.45) in diameter and .031/.062 (.787/1.58) thick. The **5110F and 5111F series** parts are designed to snap fit into panel cut outs that are .155/.158 (3.94/4.01) in diameter and .031/.062 (.787/1.58) thick.

Cat. No.	Lens Colour	Forward		Lumen mcd	Net Price
		Volts	mA		
SUPER BRITE LED					
5100H1	Red	2.0	20	30.0	\$1.75
5100H3	Amber	2.0	20	20.0	1.90
5100H5	Green	2.2	20	30.0	1.75
5100H6	Blue	3.4	45	3.0	3.12
5100H7	Yellow	2.1	20	25.0	1.75

LOW CURRENT					
5100H1LC	Red	1.8	2.0	2.0	2.21
5100H5LC	Green	1.8	2.0	2.5	3.02
5100H7LC	Yellow	1.9	2.0	2.0	2.21

BUILT-IN RESISTOR 5 VOLTS					
5102H1-5V	Red	5.0	10.0	6.0	2.43
5102H3-5V	Amber	5.0	10.0	7.0	2.43
5102H5-5V	Green	5.0	12.0	10.0	2.43

BUILT-IN RESISTOR 12 VOLTS					
5102H1-12V	Red	12.0	13.0	4.0	2.43
5102H3-12V	Amber	12.0	13.0	4.0	2.43
5102H5-12V	Green	12.0	13.0	4.0	2.43

BI-COLOUR (RED/GREEN) LED INDICATOR					
5100H1/5	Red/Green	2.2	20	6.0	2.84

HIGH INTENSITY LEDS (SUPER-BRITE)					
5101H1	Red	2.2	10.0	6.3	1.62
5101H3	Amber	2.1	10.0	10.0	1.62
5101H5	Green	2.1	10.0	10.0	1.62
5101H7	Yellow	2.1	10.0	6.3	1.62

LOW CURRENT					
5101H1LC	Red	1.8	2.0	2.0	2.12
5101H5LC	Green	1.8	2.0	2.5	2.12
5101H7LC	Yellow	1.9	2.0	2.0	2.12

BUILT-IN RESISTOR 5-VOLT					
5101H1-5V	Red	5.0	10.0	6.0	2.03
5101H3-5V	Amber	5.0	10.0	7.0	2.03
5101H5-5V	Green	5.0	12.0	10.0	2.03

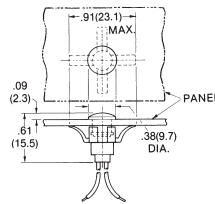
STANDARD LED, WIRE LEADS					
5110F1	Red	2.0	10.0	10.0	1.96
5110F3	Amber	2.0	10.0	7.0	2.21
5110F5	Green	2.2	20.0	16.0	1.96
5110F6	Blue	3.8	20.0	11.0	3.12
5110F7	Yellow	2.1	20.0	6.3	1.96

LOW CURRENT, WIRE LEADS					
5110F1LC	Red	1.8	2.0	2.5	2.65
5110F5LC	Green	1.8	2.0	2.1	2.65
5110F7LC	Yellow	1.9	2.0	1.8	2.65

BUILT-IN RESISTOR 5 VOLT, WIRE LEADS					
5110F1-5V	Red	5.0	10.0	8.0	2.87
5110F3-5V	Amber	5.0	10.0	8.0	2.87
5110F5-5V	Green	5.0	10.0	8.0	2.87

BUILT-IN RESISTOR 12 VOLT, WIRE LEADS					
5110F1-12V	Red	12.0	13.0	8.0	2.87
5110F3-12V	Amber	12.0	13.0	8.0	2.87
5110F5-12V	Green	12.0	13.0	8.0	2.87

Cat. No.	Lens Colour	Forward		Lumen mcd	Net Price
		Volts	mA		
STANDARD LED, WIRE WRAP TERMINALS					
5111F1	Red	2.0	10.0	10.0	\$1.09
5111F3	Amber	2.2	10.0	7.0	1.09
5111F5	Green	2.2	10.0	16.0	1.09
5111F7	Yellow	2.1	10.0	6.3	1.09
LOW CURRENT					
5111F1LC	Red	1.8	2.0	2.5	1.62
5111F5LC	Green	1.8	2.0	2.1	1.62
5111F7LC	Yellow	1.9	2.0	1.8	1.62
BUILT-IN RESISTOR 5 VOLT, WIRE WRAP TERMINALS					
5111F1-5V	Red	5.0	10.0	8.0	2.00
5111F3-5V	Amber	5.0	10.0	8.0	2.00
5111F5-5V	Green	5.0	10.0	8.0	2.00

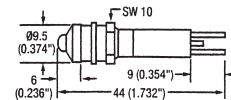


NOTE: TO INSTALL, INSERT LENS INTO PANEL AND PRESS FIRMLY TO SNAP LED ASSEMBLY ONTO REAR OF LENS.

PANEL MOUNTED LED INDICATOR LIGHT 5400A SERIES WIRE LEADS & 5/16" DIA. MOUNTING HOLE

Consists of a lens and a housing-LED assembly. Place the lens into the mounting hole from the panel front and snap the housing assembly onto the lens from the panel rear. Allows prewiring of circuit for pre-testing. Low profile damage resistant lens, offers static discharge protection and wide angle viewing. Will snap-fit into .312/.317 (7.93/8.05) dia. hole in .020/.098 (0.51/2.49) thick panels. No. 24 AWG 4.4/4.8 (111.8/121.9) long, stripped .43/.57 (10.9/14.5) leads. Red lead indicates anode. Polycarbonate lens. Natural nylon housing.

Cat. No.	Lens Colour	Forward		Lumen mcd	Includes Lens No.	Net Price
		Volts	mA			
USE 4740/4750 SERIES LENS						
5400A1	Red	2.0	20	120	4741	\$4.15
5400A3	Amber	2.0	20	120	4743	4.15
5400A5	Green	2.1	20	120	4745	4.15
5400A7	Yellow	2.1	20	120	4747	4.15

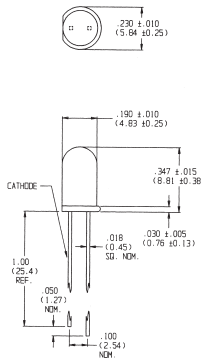


PANEL-MOUNT SUNLIGHT VISIBLE 8MM LED INDICATORS

FEATURES: Mounts in 0.315/0.323" (8/8.2mm) dia. hole in panels with a maximum thickness of 0.217" (5.5mm). Super bright LEDs with colour diffused lenses and chrome bezels. Rating: IP40. Brass terminals: Anode. Brass-tinned terminal: Cathode Solder tab terminals: 0.110 x 0.031" (2.8mm x 0.8).

Cat. No.	Colour	Voltage	Current (mA)	Net Price Each	
				1-299	300-Up
19080250	Red	12VAC/DC	9/17	\$7.36	\$5.79
19080252	Yellow	12VAC/DC	9/17	7.36	5.79
19080255	Green	12VAC/DC	9/17	13.41	10.53
19080257	Blue	12VAC/DC	9/17	13.41	10.53
1908025W	White	12VAC/DC	9/17	13.41	10.53
19080350	Red	24VAC/DC	9/17	7.54	5.93
19080352	Yellow	24VAC/DC	9/17	7.54	5.93
19080355	Green	24VAC/DC	9/17	13.41	10.53
19080357	Blue	24VAC/DC	9/17	13.41	10.53
1908035W	White	24VAC/DC	9/17	13.41	10.53

NOTE: Black bezel available.



ALL DIMENSIONS ARE IN INCHES (MM)

4300HLC SERIES SOLID STATE LED BRITE LAMPS LOW CURRENT T-1-3/4 (5MM)

FEATURES: Low current requires only 2mA. Ideal for limited current. Package type: Diffused/Non-Diffused.

Cat. No.	Lens And Output Colour	Forward Voltage		Lumen mcd	Net Price
		Typ.	Max.		
4300H1LC	Red	1.8	2.2	2.3	\$.62
4300H5LC	Green	1.8	2.2	2.3	\$.62
4300H7LC	Yellow	1.9	2.7	2.1	\$.62



IDI PANEL MOUNT LENSES

Provide quick and economical panel mounting, plus electrostatic discharge protection for T-1 and T-1¼ LEDs. Constructed from polycarbonate material. The 4331-4337 series snap into .170/.174 (4.32/4.42) dia. hole; the 4351-4357 series snap into .187/.192 (4.75/4.87) dia. hole; 4311-4317, 4321-4322 and 4371-4377 into .248/.252 (6.30/6.40) dia. hole and 4341-4347 into .354/.360 (9.00/9.14) dia. hole. Series 4311-4317, 4321-4327 and 4371-4370 feature molded in Fresnel rings that spread light evenly, providing wide viewing angle viewing (up to 180°) with a bright attractive appearance. Series 4341-4347 and 4371-4377 can be used with narrow beam LEDs. The 4370 spacer is required with the 4371-4377 series lenses where the panel thickness is less than .19 (.48). T-1 LEDs use 4330, 4350 Series lenses; T-1¼ LEDs use 4310, 4320 and 4370 Series, and 4340 series fit T-1¼ narrow beam LEDs as well as Incandescent and Neon Lamps.

Cat. No.	Lens Colour	Net Price
----------	-------------	-----------

PANEL MOUNT LENSES

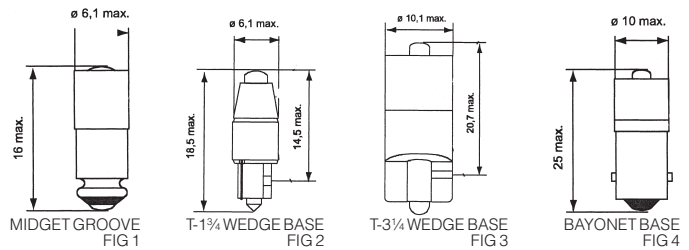
FOR T-1 (3MM) LEDs

4331	Red	\$.59
4335	Green	\$.59
4337	Yellow	\$.59
4351	Red	\$.69
4352	Clear	\$.69
4354	White	\$.69
4355	Green	\$.69
4357	Yellow	\$.69

FOR T-1¼ (5MM) LEDs

4311	Red	\$.56
4312	Clear	\$.56
4315	Green	\$.56
4317	Yellow	\$.56

Cat. No.	Lens Colour	Net Price
4321	Red	\$.69
4322	Clear	\$.69
4325	Green	\$.69
4327	Yellow	\$.69
4341	Red	\$.69
4342	Clear	\$.69
4343	Amber	\$.69
4344	White	\$.69
4345	Green	\$.69
4347	Yellow	\$.69
4371	Red	\$.69
4372	Clear	\$.69
4375	Green	\$.69
4377	Yellow	\$.69
4370	Spacer	\$.20



BASED LEDs

Based LEDs are available in various base styles, sizes, voltages and colours. Life on these based LEDs are typically in excess of 100K hours as opposed to as low as 500 for some based incandescent bulbs.

Cat. No.	Colour	Voltage	Typical Intensity (Mcd)	Current AC/DC	Net Price Each	
					1-299	300-Up
T-1¼ MIDGET GROOVE BASE, FIG 1						
1512125UR3	Red	12	330	7/14	\$8.63	\$7.67
1512125UG3	Green	12	910	7/14	14.59	12.97
1512125UY3	Yellow	12	280	7/14	8.63	7.67
1512125B3	Blue	12	350	7/14	14.59	12.97
1512125W3	White	12	700	7/14	14.59	12.97
1512135UR3	Red	24	330	7/14	8.88	7.89
1512135UG3	Green	24	910	7/14	14.84	13.19
1512135UY3	Yellow	24	280	7/14	8.89	7.89
1512135B3	Blue	24	350	7/14	14.84	13.19
1512135W3	White	24	700	7/14	14.84	13.19
1512145UR3	Red	28	330	7/14	8.88	7.89
1512145UG3	Green	28	910	7/14	14.84	13.19
1512145UY3	Yellow	28	280	7/14	8.88	7.89
1512145B3	Blue	28	350	7/14	14.84	13.19
1512145W3	White	28	700	7/14	14.84	13.19

T-1¼ WEDGE BASE, FIG 2

1511A25UR3	Red	12	280	6/12	8.88	7.89
1511A25UG3	Green	12	780	6/12	14.84	13.19
1511A25UY3	Yellow	12	240	6/12	8.88	7.89
1511A25B3	Blue	12	300	6/12	14.84	13.19
1511A25W3	White	12	600	6/12	14.84	13.19
1511A35UR3	Red	24	230	5/10	8.88	7.89
1511A35UG3	Green	24	650	5/10	14.84	13.19
1511A35UY3	Yellow	24	200	5/10	8.88	7.89
1511A45UR3	Red	28	230	5/10	8.88	7.89
1511A45UG3	Green	28	650	5/10	14.84	13.19
1511A45B3	Blue	28	250	5/10	14.84	13.19
1511A45W3	White	28	500	5/10	14.84	13.19

T-3/4 WEDGE BASE, FIG 3

1511A25UR3	Red	12	330	7/14	8.88	7.89
1511A25UGE	Green	12	910	7/14	14.84	13.19
1511A25UY3	Yellow	12	280	7/14	8.88	7.89
1511A25B3	Blue	12	350	7/14	14.84	13.19
1511A25W3	White	12	700	7/14	14.84	13.19
1511A35UR3	Red	24	330	7/14	8.88	7.89
1511A35UG3	Green	24	910	7/14	14.84	13.19
1511A35UY3	Yellow	24	280	7/14	8.88	7.89
1511A35B3	Blue	24	350	7/14	14.84	13.19
1511A35W3	White	24	700	7/14	14.84	13.19
1511A45UR3	Red	28	330	7/14	8.88	7.89
1511A45UG3	Green	28	910	7/14	14.84	13.19
1511A45UY3	Yellow	28	280	7/14	8.88	7.89
1511A45B3	Blue	28	350	7/14	14.84	13.19
1511A45W3	White	28	700	7/14	14.84	13.19

Continued on next page....