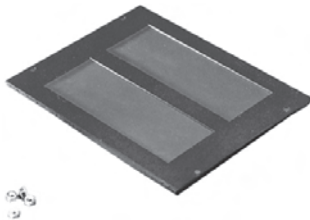


CONTEMPRA 2 SOLID BOTTOM

- Constructed of 14 gauge steel.
- For use when bottom of rack must be closed.
- Mounting hardware is included.

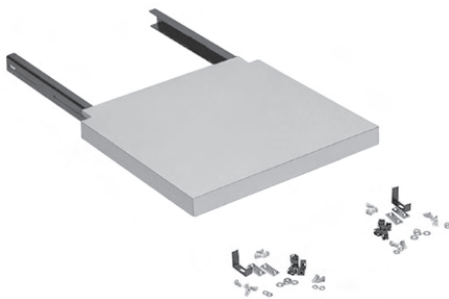
Cat. No.	Panel Width	Use for Rack Frame Depth	Net Price
GREY/BEIGE			
⚡ C2BPS1923CG1	19"	23.63"	\$32.92
⚡ C2BPS1931CG1	19"	31.5" or 36"	45.36
BLACK			
⚡ C2BPS1923BK1	19"	23.63"	32.92
⚡ C2BPS1931BK1	19"	31.5" or 36"	45.36



MICRO CELL CABLE ENTRY BOTTOM

- Constructed of 14 gauge steel.
- Features 2 cutouts for cable access.
- Underside of cutouts covered with black foam rubber which, when punctured for cable access, still maintains a virtually sealed bottom.
- Mounting hardware is included.

Cat. No.	Panel Width	Use for Rack Frame Depth	Cutout Size (2 cutouts)	Net Price
GREY/BEIGE				
⚡ C2BPCE1923CG1	19"	23.63"	11.93" x 3.5"	\$78.21
⚡ C2BPCE1931CG1	19"	31.5" or 36"	11.93" x 6"	104.00
BLACK				
⚡ C2BPCE1923BK1	19"	23.63"	11.93" x 3.5"	78.21
⚡ C2BPCE1931BK1	19"	31.5" or 36"	11.93" x 6"	104.00



CONTEMPRA 2 DESK UNIT

- Constructed of beige laminate (CG4) and 14 gauge steel support channels.
- Ideal for writing surface, keyboard, or instrument mounting requirements.
- Mounts onto rails, but is notched on both sides permitting it to be flush with cabinet sides.
- Mounting hardware is included.

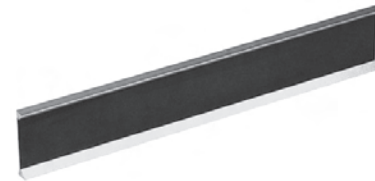
Cat. No.	For Panel Width	Net Price
⚡ CW19CG4	19	\$525.09



CONTEMPRA 2 GANGING KIT

- Complete hardware kit allowing two racks to be ganged at six points along vertical frame side.

Cat. No.	Net Price
⚡ CGH01	\$66.24



CONTEMPRA 2 TRIM KIT

- Attractive extruded aluminum dress kit with black inlay.
- Horizontal inlay provides an excellent surface for custom identification.
- Covers the horizontal top of the frame face.
- Attaches to the cabinet with a strong adhesive requiring no drilling or hardware.
- Compatible with flush doors only.

Cat. No.	For Panel Width	Net Price
⚡ C2ID19	19	\$79.80



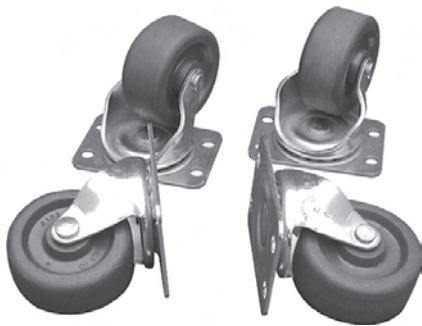
CONTEMPRA 2 GROUND BUS BARS

- Full length copper strip 0.13" x 0.63".
- Includes hardware for mounting on side struts.
- Mounting hardware is included.

Cat. No.	Panel Height		Use with Rack Frame	Net Price
	Inches	Units		
⚡ CBB35	35	20	C2F1935...	\$67.99
⚡ CBB42	42	24	C2F1942...	72.73
⚡ CBB49	49	28	C2F1949...	78.31
⚡ CBB56	56	32	C2F1956...	84.40
⚡ CBB63	63	36	C2F1963...	89.51
⚡ CBB70	70	40	C2F1970...	98.26
⚡ CBB78	78	45	C2F1978...	111.35
⚡ CBB85	85	49	C2F1985...	120.07



Continued on next page....



HEAVY DUTY CASTERS

FEATURES:

- Set of 4 medium duty casters—four bolt mounting to hole pattern in base of REFK series rack only (2" wheel diameter).
- No drilling required.
- Features ball bearing swivel and hard composition wheels.
- Small foot print 2.125" x 15/16" hole mounting pattern.
- Hard composition grey wheels (adds 3/8" to rack height).
- Manufacturer's specified capacity—600 pounds.
- Includes mounting hardware.

Cat. No.	Net Price
1425PHD	\$64.70



CASTERS

- Casters supplied in a set of 4.
- Features a manufacturer's specified capacity of 400 lbs. per set.
- Constructed of twin nylon swivel wheels with zinc axles and hoods.
- Wheel has a 2.37" dia. with a final mounting height of 2.75". 5/16-18 threaded stem mounts into existing holes in base.

Cat. No.	Net Price
1425P	\$32.74



LIGHT-DUTY WELDED STEEL RACK

APPLICATION:

- Suitable for many 19" applications, providing complete access to equipment.
- Provides an economical option to an enclosed rack.
- Welded construction.
- Engineered for use as a solid, single, free-standing unit.

STANDARDS:

- EIA RS-310-D.
- Weight load tested to 840 lbs.

CONSTRUCTION:

- Constructed of 12 gauge steel.
- EIA spacing is standard on the **front flange only**.
- Holes are drilled and tapped 10-32.
- Base is punched to accept four casters.



FINISH:

- Finished in black textured powder paint.

ACCESSORIES:

- 19" rack mount accessories.

Cat. No.	Panel Height		Panel Width	Overall Height	Ship Wt. Lbs.	Net Price
	Inches	Units				
DNRR42LDW	42	24	19	44.6	38	\$226.13
DNRR63LDW	63	36	19	65.6	41	251.53
DNRR70LDW	70	40	19	72.6	42	254.87
DNRR77LDW	77	44	19	79.6	45	266.07
DNRR84LDW	84	48	19	86.6	47	271.44



HEAVY-DUTY WELDED STEEL RACK

APPLICATIONS:

- Suitable for many 19" applications, providing complete access to equipment.
- Provides an economical, extremely sturdy option to an enclosed rack.
- Welded construction.
- Engineered for use as a solid, single, free-standing unit.

STANDARDS:

- EIA RS-310-D.
- Weight load tested to 1,530 lbs.

CONSTRUCTION:

- Constructed of 10 gauge steel.
- EIA spacing is standard on the **front flange only**.
- Holes are drilled and tapped 10-32.

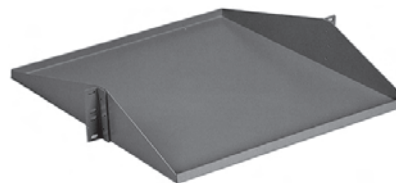
FINISH:

- Finished in black textured powder paint.

ACCESSORIES:

- Heavy duty dolly—1424T.
- 19" rack mount accessories.

Cat. No.	Panel Height		Panel Width	Overall Height	Ship Wt. Lbs.	Net Price
	Inches	Units				
DNRR42HDW	42	24	19"	48.13	65	\$273.82
DNRR63HDW	63	36	19"	69.13	77	306.02
DNRR70HDW	70	40	19"	76.13	80	310.76
DNRR77HDW	77	44	19"	83.13	82	322.13
DNRR84HDW	84	48	19"	90.13	87	326.64



RAIL MOUNTED DUAL MODEM SHELVES

- Formed 16 gauge steel construction.
- Permits convenient front and rear access to modems on relay racks.
- Rugged powder paint finish.
- Overall 19.5" deep.
- Mounting hardware not included, please order separately.
- Uses 3.5" (2U) of panel space.

Cat. No.	Colour	Net Price
UNVENTED SHELF		
DNDMS19BK1	Black	\$81.08
DNDMS19GY2	ASA 61 Grey	81.08
VENTED SHELF		
DNDMV19BK1	Black	81.08
DNDMV19GY2	ASA 61 Grey	81.08