

## P30/P40 SERIES DEFINITE PURPOSE MAGNETIC CONTACTOR 30/40 AMPERE FULL LOAD, 40/50 AMPERE RESISTIVE AC & DC COILS

### FEATURES:

- Available with auxiliary switch.
- Variety of main contact terminals.
- For control of motors, power supplies, heating elements and lighting.
- P30 switches 30A, P40 switches 40A.
- Field replaceable contacts, optional auxiliary switch, universal mounting plate.
- Approx. dimensions a(67.3)×b(96.5)×c(101.1h).
- Weight 794g.
- Contact Rating (P30) 30FLA, 120LRA @ 600VAC, 40A res. @ 600VAC, (P40) 40FLA, 160LRA @ 600VAC.
- UL File E22575, CSA File LR15734, TUV P30 No. R97070, TUV P40 No. R97071.

### P30/P40 CONTACTORS

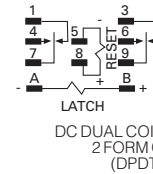
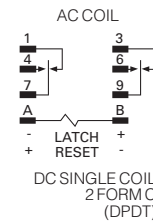
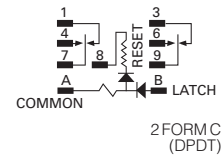
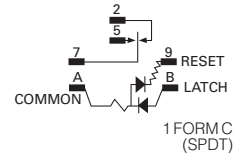
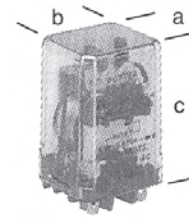
Cat. No.	Coil			Contacts		Net Price
	Input	Inrush VA (Max.)	Sealed VA (Max.)	Arrang.	Amp Rating	
<b>AC COIL MODELS</b>						
P30P47A12P1-120	120	92	12	4PST-NO-DM	30•*∅	\$122.93
P40P42A12P1-24	24	92	12	3PST-NO-DM	40•*∅	113.70
P40P42A12P1-120	120	92	12	3PST-NO-DM	40•*∅	109.29
P40P42A12D1-120	120	92	12	3PST-NO-DM + Aux. Switch	40•*∅	118.88

- Denotes UL.
- \*Denotes CSA.
- ∅Denotes TUV.

### P30/P40 CONTACTORS

Cat. No.	Coil			Contacts		Net Price
	Input	Res. in Ohms	Max. Power (W)	Arrang.	Amp Rating	
<b>DC COIL MODELS</b>						
P30P42D12P1-24	24	84	7.5	3PST-NO-DM	30•*∅	\$89.37
P40P42D12P1-24	24	84	7.5	3PST-NO-DM	40•*∅	94.01
P30P47D12P1-24	24	84	7.5	4PST-NO-DM	30•*∅	102.87

- Denotes UL.
- \*Denotes CSA.
- ∅Denotes TUV.



WIRING DIAGRAMS (BOTTOM VIEWS)

## KUL SERIES 10 AMP MAGNETIC LATCHING RELAY

**Note:** Contact positions shown are the result of the "RESET" coil having been energized last.

### FEATURES:

- Single or dual-wound DC coils or single-wound AC coils.
- Contact arrangements to 3PDT.
- Reset occurs by reversing polarity in a single coil relay or by energizing the reset winding in dual coil relays.
- Uses same sockets as other KU relays.
- Approx. dimensions a(38.9)×b(35.7)×c(54.8h).
- Weight 96g.
- Contact Rating 10A @ 28VDC or 240VAC, 1/4HP @ 120VAC, 1/3HP @ 250-600VAC.
- UL File E22575, CSA File 15734.

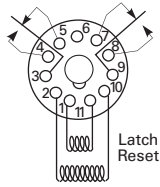
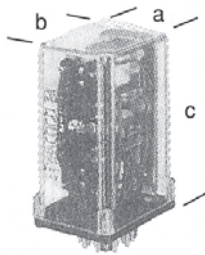
### KUL LATCHING RELAYS

Cat. No.	Coil			Contacts		Net Price
	Input	Res. in Ohms	Nom. Power	Arrang.	Amp Rating	
KUL-5A15S-24	120	3,700	—	SPDT	10•*	\$45.07
KUL-11A15S-24	24	176	—	DPDT	10•*	48.48
KUL-11A15S-120	120	3,700	—	DPDT	10•*	49.70
KUL-11D15D-12	12	90	1.65W	DPDT	10•*	64.57
KUL-11D15D-24	24	350	—	DPDT	10•*	64.57
KUL-11D15S-12	12	120	1.2W	DPDT	10•*	36.82
KUL-11D15S-24	24	472	—	DPDT	10•*	36.82

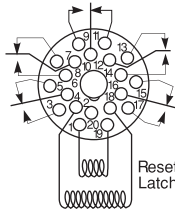
KUL-11A15S-24: "A" denotes AC coil.  
KUL-11D15S-24: "D" denotes DC coil.  
KUL-11D15D-24: "D" denotes dual coil.  
KUL-11D15S-24: "S" denotes single coil.

- Denotes UL.
- \*Denotes CSA.

**NOTE:** For sockets see KUP section.



KBP11



KBP20

KBP WIRING DIAGRAMS (BOTTOM VIEWS)  
NOTE: SHOWN WITH RESET COIL ENERGIZED LAST.

### KB/KBP SERIES 5 AND 10 AMP DUAL COIL LATCHING RELAY

#### FEATURES:

- Dual coil latching relay accepts a momentary impulse to one coil to latch and a second impulse to the other coil to release.
- Enclosed in a clear polycarbonate dust cover.
- AC or DC coils.
- Contact up to 5PDT.
- Mounts in 8, 11 or 20-pin octal-type plugs.

#### KB/KBP LATCHING RELAYS

Cat. No.	Coil			Contacts		Net Price
	Input	Res. in Ohms	Nom. Power	Arrang.	Amp Rating	
<b>OPEN-STYLE RELAYS</b>						
<b>KB-17AG-120</b>	120	1,030	5VA	4PDT	10	<b>\$158.76</b>
<b>KB-17DG-12</b>	12	52	2.7W	4PDT	10	<b>164.21</b>
<b>ENCLOSED RELAYS</b>						
<b>KBP-11AG-120</b>	120	1,030	5VA	DPDT	10●	<b>205.56</b>
<b>KBP-11DG-24</b>	24	230	2.7W	DPDT	10●	<b>208.50</b>
<b>KBP-11DG-110</b>	110	4560				<b>214.32</b>
<b>KBP-20AG-120</b>	120	700	7.8VA	5PDT	10●	<b>268.08</b>

**KB-17AY-120:** "KB" denotes open-style relay with two .156 (3.96) mtg. holes on 1.375 (34.9) centres.

**KBP-11A-120:** "KBP" denotes enclosed relay with plug-in base.

**KB-17AY-120:** "A" denotes AC coil.

**KB-17DG-12:** "D" denotes DC coil.

● Denotes UL.

\* Denotes CSA.

### SOCKETS FOR KBP SERIES RELAYS 11 PIN PLUG-IN MODELS FIT KRPA SOCKETS

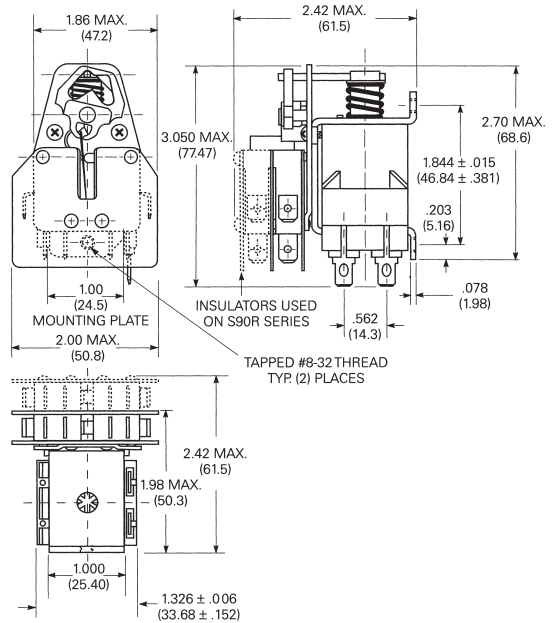
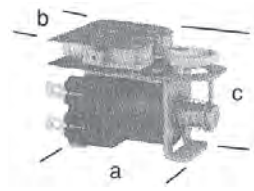
Cat. No.	Net Price
<b>27E892</b>	<b>\$15.20</b>

#### CHASSIS MOUNT 20-PIN SOCKET WITH SOLDER TERMINALS

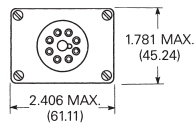
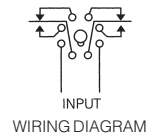
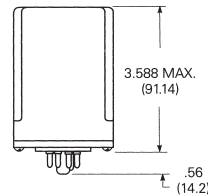
#### FEATURES:

- Mounts in 32.13 dia. hole.
- Secure to chassis via 2 holes 3.99 dia. on 38.00 centres.

Cat. No.	Net Price
<b>27E928</b>	<b>\$17.65</b>



OPEN RELAYS



ENCLOSED RELAYS  
S89 SERIES

### OUTLINE DIMENSIONS S89/S90R SERIES BISTABLE, IMPULSE RELAY 10 TO 20 AMP INDUSTRIAL RATING CONTINUOUS COIL RATING

#### FEATURES:

- Operates on 75ms min. pulse.
- S89R available with plastic cover and octal plug-in base.
- Approx. dimensions a(68.6) × b(50.8) × c(61.5h).
- Weight 241g.
- Contact Rating (S89) 15A @ 250VAC, 1/2HP @ 125VAC, (S90) 20A @ 277VAC, 2HP @ 250VAC.
- UL File E22575, CSA File LR15734.

Continued on next page....