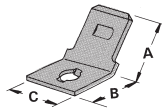
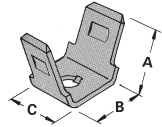


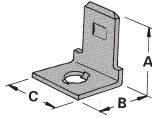
1005
1006
1007
1008



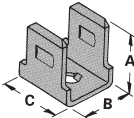
2004
1271
1280



2005
1263
1258



2002
1261
1256

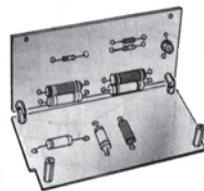
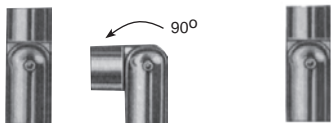


2003
1262
1257

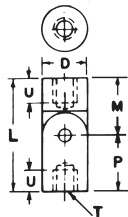
45° AND 90° QUICK-FIT RIVET TYPE TERMINALS

MATERIAL: Bright Brass

Cat. No.	Tab Size	Material Thick	Dimension			Hole Dia.	Pairs	Net Price Each
			A	B	C			
MULTIPLE 90°								
1005	.250	.032	.703	.375	—	.130	2	\$.43
1006	.250	.032	1.075	.375	—	.130	3	\$.47
1007	.250	.032	1.422	.375	—	.130	4	\$.55
1008	.250	.032	1.837	.375	—	.130	5	\$.77
45°								
2004	.110	.020	.350	.270	.180	.096	—	\$.14
1271	.187	.020	.375	.250	.250	.099	—	\$.18
1280	.250	.032	.405	.312	.312	.130	—	\$.09
2005	.110	.020	.350	.383	.180	.096	—	\$.16
1263	.187	.020	.312	.375	.265	.135	—	\$.14
1258	.250	.032	.405	.343	.312	.130	—	\$.11
90°								
2002	.110	.020	.360	.250	.180	.096	—	\$.14
1261	.187	.020	.375	.250	.250	.099	—	\$.14
1256	.250	.032	.405	.312	.312	.130	—	\$.09
2003	.110	.020	.350	.383	.180	.096	—	\$.16
1262	.187	.020	.312	.250	.250	.099	—	\$.20
1257	.250	.032	.405	.343	.312	.130	—	\$.11



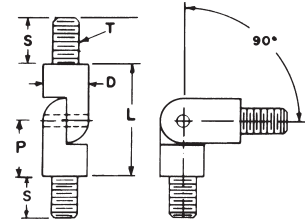
ONLY 2 SCREWS USED TO FASTEN BOARD IN PLACE OR OPEN THE HINGED BOARD.



KEYSTONE FEMALE/FEMALE HINGED STANDOFFS FOR TERMINAL BOARDS

HINGE

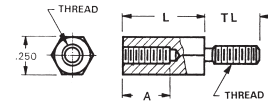
Cat. No.	Dimensions						Net Price Each	
	T Thread	D Dia.	L Length	U	M	P	1-19	20-Up
351	4-40	.187	3/4	.172	.375	.375	\$1.06	\$.95
352	4-40	.187	1	.250	.375	.625	1.13	1.02
353	6-32	.250	3/4	.172	.375	.375	1.48	1.32
354	6-32	.250	1	.250	.375	.625	1.52	1.36
355	8-32	.250	3/4	.172	.375	.375	1.35	1.20
356	8-32	.250	1	.250	.375	.675	1.42	1.28



KEYSTONE MALE/MALE HINGED STANDOFFS FOR TERMINAL BOARDS

HINGE

Cat. No.	Dimensions					Net Price Each	
	T Thread	D Dia.	L Length	S	P	1-19	20-Up
357	4-40	.187	1/2	1/4	1/4	\$1.42	\$1.28
358	6-32	.250	1/2	5/16	1/4	1.46	1.31
359	8-32	.250	1/2	5/16	1/4	1.62	1.45



MALE/FEMALE .250 HEX THREADED STANDOFFS 4-40 THREAD

MATERIAL: Brass, Nickel Plate. Aluminum, Clear Iridite Plate. Stainless Steel.

Thread Size	TL External	A Internal
4-40	3/16 (.187)	1/4 (.250)
6-32	1/4 (.250)	3/8 (.375)
8-32	3/8 (.375)	3/8 (.375)

Cat. No.	Length (Inches) "L"	Net Price Each		
		1-499	500-999	1000-Up
STAINLESS STEEL				
8712	1/4 (.250)***	\$1.64	\$1.15	\$.74
2087	3/8 (.375)**	1.55	1.24	1.24
2088	1/2 (.500)	1.62	1.29	1.29
2089	5/8 (.625)	1.69	1.35	1.35
2090	3/4 (.750)	1.79	1.42	1.42
2091	7/8 (.875)	1.85	1.47	1.47
2092	1 (1.000)	1.88	1.49	1.49
2093	1-1/8 (1.125)	1.98	1.58	1.58
2094	1-1/4 (1.250)	2.05	1.64	1.64
2095	1-3/8 (1.375)	2.11	1.69	1.69
2096	1-1/2 (1.500)	2.15	1.71	1.71
2097	1-5/8 (1.625)	2.19	1.75	1.75
2098	1-3/4 (1.750)	2.22	1.77	1.77
2099	2 (2.000)	2.34	1.87	1.87
BRASS				
8713	1/4 (.250)***	.33	.23	.15
8799	3/16 (.187)***	.50	.35	.23
7200	3/8 (.375)**	.37	.26	.17
1944	1/2 (.500)	.48	.34	.22
1945	5/8 (.625)	.49	.34	.22
1946	3/4 (.750)	.58	.41	.26
7201	7/8 (.875)	.59	.41	.27
1947	1 (1.000)	.65	.46	.29
7202	1-1/8 (1.125)	.70	.49	.32
1948	1-1/4 (1.250)	.99	.70	.45
1949	1-3/8 (1.375)	1.02	.72	.46
1950	1-1/2 (1.500)	1.07	.75	.48
7203	1-5/8 (1.625)	1.08	.76	.49
7205	1-3/4 (1.750)	1.20	.85	.55
1951	2 (2.000)	1.21	.85	.55

**Internal Thread .250 Deep.
***Internal Thread .130/.150 Deep.

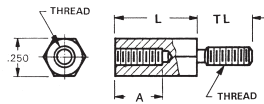
Continued on next page...

Cat. No.	Length (Inches) "L"	Net Price Each		
		1-499	500-999	1000-Up
ALUMINUM				
8714	1/4 (.250)***	\$.29	\$.20	\$.13
8400	3/8 (.375)**	.32	.23	.15
8401	1/2 (.500)	.45	.32	.20
8402	5/8 (.625)	.49	.34	.22
8403	3/4 (.750)	.49	.35	.22
8404	7/8 (.875)	.54	.38	.24
8405	1 (1.000)	.57	.40	.26
8406	1-1/8 (1.125)	.69	.49	.32
8407	1-1/4 (1.250)	.70	.49	.32
8408	1-3/8 (1.375)	.82	.58	.37
8409	1-1/2 (1.500)	.84	.59	.38
8410	1-5/8 (1.625)	.86	.61	.39
8411	1-3/4 (1.750)	.88	.62	.40
8412	2 (2.000)	.91	.64	.42

**Internal Thread .250 Deep.
***Internal Thread .130/.150 Deep.

Cat. No.	Length (Inches) "L"	Net Price Each		
		1-499	500-999	1000-Up
ALUMINUM				
8717	1/4 (.250)***	\$.32	\$.22	\$.14
8413	3/8 (.375)**	.33	.24	.15
8414	1/2 (.500)	.34	.24	.15
8415	5/8 (.625)	.43	.30	.19
8416	3/4 (.750)	.43	.30	.20
8417	7/8 (.875)	.47	.33	.21
8418	1 (1.000)	.49	.35	.22
8419	1-1/8 (1.125)	.51	.36	.23
8420	1-1/4 (1.250)	.54	.38	.25
8421	1-3/8 (1.375)	.62	.43	.28
8422	1-1/2 (1.500)	.70	.50	.32
8423	1-5/8 (1.625)	.72	.50	.33
8424	1-3/4 (1.750)	.75	.53	.34
8425	2 (2.000)	.77	.54	.35

**Internal Thread .250 Deep.
***Internal Thread .130/.150 Deep.



MALE/FEMALE .250 HEX THREADED STANDOFFS 6-32 THREAD

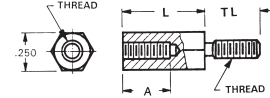
MATERIAL: Brass, Nickel Plate, Aluminum, Clear Iridite Plate, Stainless Steel.

Thread Size	TL External	A Internal
4-40	3/16 (.187)	1/4 (.250)
6-32	1/4 (.250)	3/8 (.375)
8-32	3/8 (.375)	3/8 (.375)

Cat. No.	Length (Inches) "L"	Net Price Each		
		1-499	500-999	1000-Up
STAINLESS STEEL				
8715	1/4 (.250)***	\$1.41	\$.99	\$.64
2119	3/8 (.375)**	1.30	1.04	1.04
2120	1/2 (.500)	1.38	1.11	1.11
2121	5/8 (.625)	1.46	1.17	1.17
2122	3/4 (.750)	1.69	1.35	1.35
2123	7/8 (.875)	1.72	1.37	1.37
2124	1 (1.000)	1.79	1.42	1.42
2125	1-1/8 (1.125)	1.98	1.58	1.58
2126	1-1/4 (1.250)	2.15	1.71	1.71
2127	1-3/8 (1.375)	2.15	1.71	1.71
2128	1-1/2 (1.500)	2.19	1.75	1.75
2129	1-5/8 (1.625)	2.19	1.75	1.75
2130	1-3/4 (1.750)	2.26	1.81	1.81
2131	2 (2.000)	2.34	1.87	1.87

Cat. No.	Length (Inches) "L"	Net Price Each		
		1-499	500-999	1000-Up
BRASS				
8716	1/4 (.250)***	.32	.23	.15
7210	3/8 (.375)**	.38	.27	.17
1952	1/2 (.500)	.41	.29	.19
1953	5/8 (.625)	.52	.37	.24
1954	3/4 (.750)	.55	.39	.25
7211	7/8 (.875)	.63	.44	.29
1644	1 (1.000)	.65	.46	.30
7212	1-1/8 (1.125)	.69	.49	.32
1955	1-1/4 (1.250)	.82	.58	.37
1956	1-3/8 (1.375)	.89	.63	.40
1645	1-1/2 (1.500)	.90	.63	.41
7214	1-5/8 (1.625)	1.08	.76	.49
7215	1-3/4 (1.750)	1.20	.85	.55
1646	2 (2.000)	1.21	.85	.55

**Internal Thread .250 Deep.
***Internal Thread .130/.150 Deep.



MALE/FEMALE .250 HEX THREADED STANDOFFS 8-32 THREAD

MATERIAL: Brass, Nickel Plate, Aluminum, Clear Iridite Plate, Stainless Steel.

Thread Size	TL External	A Internal
4-40	3/16 (.187)	1/4 (.250)
6-32	1/4 (.250)	3/8 (.375)
8-32	3/8 (.375)	3/8 (.375)

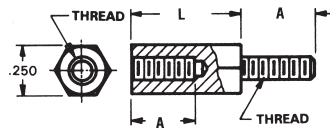
Cat. No.	Length (Inches) "L"	Net Price Each		
		1-19	20-99	100-Up
STAINLESS STEEL				
2149	3/8 (.375)**	\$1.85	\$1.66	\$1.60
2150	1/2 (.500)	1.88	1.70	1.64
2151	5/8 (.625)	1.92	1.74	1.68
2152	3/4 (.750)	2.02	1.82	1.76
2153	7/8 (.875)	2.15	1.94	1.88
2154	1 (1.000)	2.22	2.02	1.94
2155	1-1/8 (1.125)	3.11	2.82	2.72
2156	1-1/4 (1.250)	3.27	2.95	2.85
2157	1-3/8 (1.375)	3.32	3.00	2.90
2158	1-1/2 (1.500)	3.36	3.04	2.94
2159	1-5/8 (1.625)	3.40	3.07	2.96
2160	1-3/4 (1.750)	3.45	3.12	3.01
2161	2 (2.000)	3.57	3.23	3.12

**Internal Thread .250 Deep.
***Internal Thread .130/.150 Deep.

Cat. No.	Length (Inches) "L"	Net Price Per 1000		
		1-499	500-999	1000-Up
BRASS				
7220	3/8 (.375)**	\$438.88	\$308.97	\$199.51
1957	1/2 (.500)	443.19	312.01	201.47
1958	5/8 (.625)	616.49	434.00	280.25
1959	3/4 (.750)	647.40	455.77	294.30
7221	7/8 (.875)	708.80	498.99	322.21
1960	1 (1.000)	743.62	523.51	338.04
7222	1-1/8 (1.125)	797.60	561.51	362.58
1961	1-1/4 (1.250)	994.36	700.03	452.02
1962	1-3/8 (1.375)	1018.62	717.11	463.05
1963	1-1/2 (1.500)	1066.33	750.69	484.74
7224	1-5/8 (1.625)	1076.13	757.59	489.19
7225	1-3/4 (1.750)	1200.91	845.44	545.92
1964	2 (2.000)	1210.49	852.18	550.27

Cat. No.	Length (Inches) "L"	Net Price Each		
		1-499	500-999	1000-Up
ALUMINUM				
8426	3/8 (.375)**	443.19	312.01	201.47
8427	1/2 (.500)	450.63	317.25	204.85
8428	5/8 (.625)	485.46	341.76	220.68
8429	3/4 (.750)	516.36	363.51	234.73
8430	7/8 (.875)	573.86	404.00	260.87
8431	1 (1.000)	608.67	428.50	276.69
8432	1-1/8 (1.125)	816.38	574.74	371.12
8433	1-1/4 (1.250)	845.71	595.37	384.45
8434	1-3/8 (1.375)	912.99	642.74	415.03
8435	1-1/2 (1.500)	922.38	649.36	419.30
8436	1-5/8 (1.625)	931.75	655.95	423.56
8437	1-3/4 (1.750)	941.55	662.85	428.02
8438	2 (2.000)	951.32	669.73	432.46

**Internal Thread .250 Deep.
***Internal Thread .130/.150 Deep.



NYLON MALE/FEMALE .250 HEX THREADED STANDOFFS

MATERIAL: Nylon 6/6.

Thread Size	"A"
4-40	3/16 (.187)
6-32	1/4 (.250)
8-32	3/8 (.375)

Cat. No.	Length (Inches) "L"	Net Price Per 1000		
		1-499	500-999	1000-Up
4-40 THREAD				
4799	3/16 (.187)	\$367.10	\$258.43	\$166.88
4800	1/4 (.250)	332.50	234.08	151.15
4801	3/8 (.375)	339.15	238.77	154.18
4802	1/2 (.500)	352.84	248.40	160.39
4803	5/8 (.625)	359.87	253.35	163.59
4804	3/4 (.750)	366.93	258.32	166.80
4805	7/8 (.875)	373.58	263.00	169.82
4806	1 (1.000)	380.21	267.67	172.84
4807	1-1/8 (1.125)	384.12	270.42	174.61
4808	1-1/4 (1.250)	387.26	272.63	176.05
4809	1-3/8 (1.375)	393.92	277.31	179.07
4810	1-1/2 (1.500)	400.97	282.28	182.27
4811	1-5/8 (1.625)	407.60	286.95	185.29
4812	1-3/4 (1.750)	414.63	291.90	188.48
4813	2 (2.000)	421.30	296.60	191.52

6-32 THREAD

4814	1/4 (.250)*	332.50	234.08	151.15
4815	3/8 (.375)	339.15	238.77	154.18
4816	1/2 (.500)	352.84	248.40	160.39
4817	5/8 (.625)	359.87	253.35	163.59
4818	3/4 (.750)	366.93	258.32	166.80
4819	7/8 (.875)	373.58	263.00	169.82
4820	1 (1.000)	380.21	267.67	172.84
4821	1-1/8 (1.125)	384.12	270.42	174.61
4822	1-1/4 (1.250)	387.26	272.63	176.05
4823	1-3/8 (1.375)	393.92	277.31	179.07
4824	1-1/2 (1.500)	400.97	282.28	182.27
4825	1-5/8 (1.625)	407.60	286.95	185.29
4826	1-3/4 (1.750)	414.63	291.90	188.48
4827	2 (2.000)	421.30	296.60	191.52

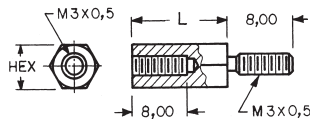
**Internal Thread .130/.150 Deep.

***Internal Thread .250 Deep.

Cat. No.	Length (Inches) "L"	Net Price Per 1000		
		1-499	500-999	1000-Up
8-32 THREAD				
4828	1/4 (.250)*	\$332.50	\$234.08	\$151.15
4829	3/8 (.375)**	339.15	238.77	154.18
4830	1/2 (.500)	352.84	248.40	160.39
4831	5/8 (.625)	359.87	253.35	163.59
4832	3/4 (.750)	366.93	258.32	166.80
4833	7/8 (.875)	373.58	263.00	169.82
4834	1 (1.000)	380.21	267.67	172.84
4835	1-1/8 (1.125)	384.12	270.42	174.61
4836	1-1/4 (1.250)	387.26	272.63	176.05
4837	1-3/8 (1.375)	393.92	277.31	179.07
4838	1-1/2 (1.500)	400.97	282.28	182.27
4839	1-5/8 (1.625)	407.60	286.95	185.29
4840	1-3/4 (1.750)	414.63	291.90	188.48
4841	2 (2.000)	421.30	296.60	191.52

**Internal Thread .130/.150 Deep.

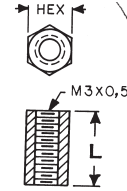
***Internal Thread .250 Deep.



METRIC M3 X 0.5MM MALE/FEMALE THREADED STANDOFFS

MATERIAL: Brass, Nickel Plated

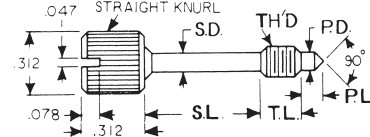
Cat. No.	Dimensions			Net Price
	"L"	"A"	"B"	
5.0MM HEX				
4313	10.0	8.0	8.0	\$.56
4314	12.0	8.0	8.0	.57
4315	15.0	8.0	8.0	.60
4316	18.0	8.0	8.0	.64
4317	20.0	8.0	8.0	.66
4318	25.0	8.0	8.0	.73
5.5MM HEX				
4319	10.0	8.0	8.0	.58
4320	12.0	8.0	8.0	.59
4321	15.0	8.0	8.0	.63
4322	18.0	8.0	8.0	.68
4323	20.0	8.0	8.0	.70
4324	25.0	8.0	8.0	.78



METRIC M3 THREADED STANDOFFS

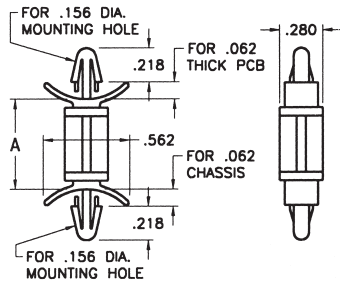
MATERIAL: Brass, ASTM-B16, Nickel Plate (QQ-N-290)

Cat. No.	Dimension "L"	Net Price
4390	5.0mm	\$.37
4391	10.0mm	.43
4392	15.0mm	.48
4393	20.0mm	.57
4394	25.0mm	.62
5.5MM HEX		
4395	5.0mm	.37
4396	10.0mm	.45
4397	15.0mm	.50
4398	20.0mm	.61
4399	25.0mm	.67

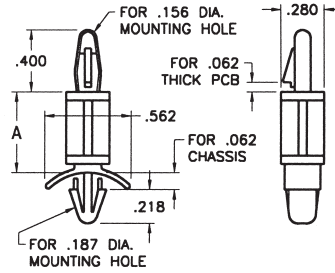


STAINLESS STEEL CAPTIVE PANEL SCREWS

Cat. No.	TH'D	T.L.	S.D.	S.L.	P.D.	P.L.	Net Price
		+ .000 - .015	+ .005	± .010	+ .000 - .010	± .015	
8706	4-40	.125	.078	.171	.078	.078	\$2.68
8707	4-40	.125	.078	.296	.078	.078	2.94
8708	4-40	.125	.078	.421	.078	.078	3.15
8709	6-32	.218	.095	.187	.095	.093	2.94
8710	6-32	.218	.095	.312	.095	.093	3.15
8711	6-32	.218	.095	.437	.095	.093	3.36



8815, 8816, 8817, 8818, 8819, 8820, 8821



8807, 8808, 8809, 8810, 8811, 8812, 8813, 8814

INSULATED PC LOCK-IN SUPPORTS

FEATURES: Easy snap-in assembly. Designed for .062 thick PC Boards and chassis. Releaseable for repairs. Strong dependable grip. No tools required for installation. **MATERIALS:** Nylon, UL Rated 94V-0.

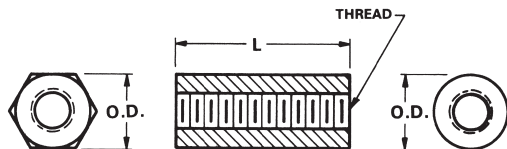
Cat. No.	Dim. "A"	Description	Net Price Per 1000
8815	.187	One end locks into chassis, the other end into the PC Board	\$131.84
8816	.250		144.33
8817	.375		151.39
8818	.500		162.52
8819	.625		173.68
8820	.750		184.62
8821	.875		194.82
8807	.187	One end locks into chassis, the other end locks into the PC Board with easy release lever	119.32
8808	.250		127.14
8809	.375		133.39
8810	.500		143.17
8811	.625		153.34
8812	.750		163.12
8813	.875		173.30
8814	1.000		183.46



HEX



ROUND



HEX AND ROUND THREADED STANDOFFS
ALUMINUM IRIDITE FINISH

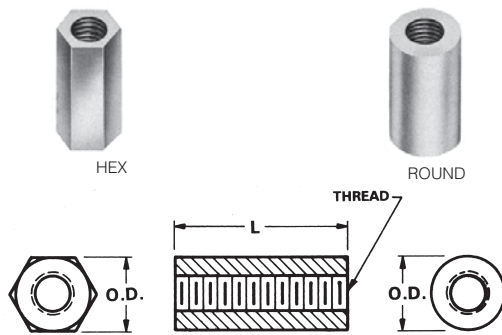
Cat. No.	Thread	O.D.	Length	Net Price Per 1000				
				1-499	500-999	1000-Up		
HEX								
1797A	2-56	.156 (5/32)	3/16 (.187)	\$479.57	\$337.62	\$218.00		
1797B			1/4 (.250)	514.79	362.41	234.01		
1797C			5/16 (.312)	535.91	377.27	243.62		
1797D			3/8 (.375)	406.62	286.26	184.84		
1891	4-40	.187 (3/16)	1/4 (.250)	254.07	178.87	115.49		
1892			3/8 (.375)	298.46	210.11	135.67		
1893			1/2 (.500)	328.59	231.33	149.37		
1894			5/8 (.625)	386.10	271.80	175.51		
1895			3/4 (.750)	427.96	301.28	194.54		
1896			7/8 (.875)	470.97	331.56	214.09		
1897			1 (1.000)	516.36	363.51	234.73		
2201			4-40	.250 (1/4)	1/4 (.250)	245.68	172.95	111.68
2202					3/8 (.375)	275.00	193.60	125.01
2203					1/2 (.500)	304.34	214.26	138.35
1808	5/8 (.625)	328.19			231.04	149.19		
2204	3/4 (.750)	370.43			260.78	168.40		
1809	7/8 (.875)	422.07			297.13	191.87		
2205	6-32	.250 (1/4)	1 (1.000)	470.97	331.56	214.09		
2206			1-1/2 (1.500)	802.30	564.82	364.72		
2207			2 (2.000)	925.69	651.69	420.81		
2208			1/4 (.250)	245.68	172.95	111.68		
2209			3/8 (.375)	275.00	193.60	125.01		
2210			1/2 (.500)	304.34	214.26	138.35		
1813			5/8 (.625)	346.97	244.26	157.73		
2211			3/4 (.750)	370.43	260.78	168.40		
1816			7/8 (.875)	394.68	277.85	179.42		
2212			1 (1.000)	470.97	331.56	214.09		
1818			1-1/4 (1.250)	710.75	500.37	323.10		
2213			1-1/2 (1.500)	802.30	564.82	364.72		
1819	1-3/4 (1.750)	837.51	589.60	380.72				
2214	2 (2.000)	925.69	651.69	420.81				
1820	8-32	.250 (1/4)	2-1/4 (2.250)	1027.61	723.44	467.14		
1825			2-1/2 (2.500)	1123.64	791.04	510.79		
2215			1/4 (.250)	245.68	172.95	111.68		
2216			3/8 (.375)	275.00	193.60	125.01		
2217			1/2 (.500)	304.34	214.26	138.35		
1827			5/8 (.625)	336.01	236.55	152.74		
2218			3/4 (.750)	362.23	255.01	164.66		
1828			7/8 (.875)	449.85	316.68	204.49		
2219			1 (1.000)	470.97	331.56	214.09		
2220			1-1/2 (1.500)	802.30	564.82	364.72		
2221			2 (2.000)	925.69	651.69	420.81		
1926A			8-32	.375 (3/8)	3/8 (.375)	414.63	291.90	188.48
1926B					1/2 (.500)	434.21	305.68	197.38
1926C					5/8 (.625)	568.38	400.14	258.38
1926D					3/4 (.750)	660.31	464.85	300.17
1926E					1 (1.000)	801.13	563.99	364.18
1801A					2-56	.156 (5/32)	3/16 (.187)	450.25
1801B			1/4 (.250)	445.53			313.65	202.53
1801C	5/16 (.312)	482.32	339.55	219.25				
1901D	3/8 (.375)	00.00	00.00	00.00				
2025	4-40	.187 (3/16)	1/4 (.250)	251.92	177.35	114.52		
2026			3/8 (.375)	290.64	204.61	132.12		
2027			1/2 (.500)	320.77	225.82	145.82		
2028			5/8 (.625)	378.66	266.57	172.13		
2029			3/4 (.750)	422.07	297.13	191.87		
2030			7/8 (.875)	462.36	325.50	210.18		
2031			1 (1.000)	516.36	363.51	234.73		
3478			4-40	.250 (1/4)	1/4 (.250)	222.98	156.98	101.36
3479					3/8 (.375)	246.84	173.77	112.21
3480					1/2 (.500)	277.34	195.25	126.07
1839	5/8 (.625)	300.80			211.76	136.74		
3481	3/4 (.750)	337.99			237.94	153.64		
1846	7/8 (.875)	415.82			292.74	189.02		
3482	1 (1.000)	459.64			323.59	208.94		
3483	1-1/2 (1.500)	776.09			546.37	352.80		
3484	2 (2.000)	898.92	632.84	408.64				

NOTE: Spacers over 1.000" long are tapped .375" deep each end.

Continued on next page....

Cat. No.	Thread	O.D.	Length	Net Price Per 1000				
				1-499	500-999	1000-Up		
ROUND (CONTINUED)								
3485	6-32	.250 (1/4)	1/4 (.250)	\$222.98	\$156.98	\$101.36		
3486			3/8 (.375)	246.84	173.77	112.21		
3487			1/2 (.500)	277.34	195.25	126.07		
1847			5/8 (.625)	329.36	231.86	149.72		
3488			3/4 (.750)	337.99	237.94	153.64		
1848			7/8 (.875)	371.03	261.21	168.67		
3489			1 (1.000)	459.64	323.59	208.94		
1853			1-1/4 (1.250)	696.49	490.33	316.61		
3490			1-1/2 (1.500)	776.09	546.37	352.80		
1855			1-3/4 (1.750)	823.61	579.82	374.40		
3491			2 (2.000)	898.92	632.84	408.64		
1856			2-1/4 (2.250)	1000.62	704.44	454.87		
1857			2-1/2 (2.500)	1096.46	771.90	498.44		
3492			8-32	.250 (1/4)	1/4 (.250)	222.98	156.98	101.36
3493					3/8 (.375)	246.84	173.77	112.21
3494	1/2 (.500)	277.34			195.25	126.07		
1858	5/8 (.625)	300.80			211.76	136.74		
3495	3/4 (.750)	337.99			237.94	153.64		
1859	7/8 (.875)	371.03			261.21	168.67		
3496	1 (1.000)	459.64			323.59	208.94		
3497	1-1/2 (1.500)	776.09			546.37	352.80		
3498	2 (2.000)	898.92			632.84	408.64		
2315A	8-32	.375 (3/8)			3/8 (.375)	612.96	431.52	278.64
2315B					1/2 (.500)	688.46	484.67	312.97
2315C					5/8 (.625)	741.65	522.12	337.15
2315D					3/4 (.750)	795.64	560.13	361.69
2315E					1 (1.000)	948.98	668.08	431.39

NOTE: Spacers over 1.000" long are tapped .375" deep each end.



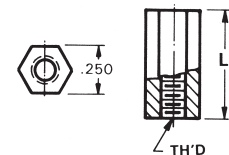
HEX AND ROUND THREADED STANDOFFS BRASS ZINC PLATE

Cat. No.	Thread	O.D.	Length	Net Price Per 1000		
				1-499	500-999	1000-Up
HEX						
1798A	2-56	.156 (5/32)	3/16 (.187)	\$562.90	\$396.28	\$255.88
1798B			1/4 (.250)	471.75	332.11	214.45
1798C			5/16 (.312)	729.16	513.32	331.46
1798D			3/8 (.375)	677.49	476.95	307.98
1450	4-40	.187 (3/16)	1/4 (.250)	284.78	200.48	129.46
1803			3/8 (.375)	333.67	234.91	151.68
1656			1/2 (.500)	391.58	275.67	178.00
1804			5/8 (.625)	476.07	335.15	216.41
1656A			3/4 (.750)	537.88	378.67	244.51
1805			7/8 (.875)	659.90	464.57	299.98
1656B	1 (1.000)	693.54	488.25	315.28		
1450A	4-40	.250 (1/4)	1/4 (.250)	265.99	187.26	120.91
1450B			3/8 (.375)	333.27	234.62	151.50
1450C			1/2 (.500)	385.31	271.25	175.16
1829			5/8 (.625)	520.27	366.27	236.51
1450D			3/4 (.750)	595.37	419.14	270.64
1830			7/8 (.875)	632.94	445.59	287.72
1450E			1 (1.000)	670.08	471.73	304.61
1831			1-1/2 (1.500)	1268.57	893.07	576.67
1832			2 (2.000)	1300.25	915.37	591.08

NOTE: Spacers over 1.000" long are tapped .375" deep each end.

Cat. No.	Thread	O.D.	Length	Net Price Per 1000				
				1-499	500-999	1000-Up		
HEX (CONTINUED)								
1451A	6-32	.250	1/4 (.250)	\$265.99	\$187.26	\$120.91		
1451B			3/8 (.375)	333.27	234.62	151.50		
1451C			1/2 (.500)	385.31	271.25	175.16		
1451D			5/8 (.625)	520.27	366.27	236.51		
1474A	8-32	.250 (1/4)	1/4 (.250)	265.99	187.26	120.91		
1474B			3/8 (.375)	333.27	234.62	151.50		
1474C			1/2 (.500)	385.31	271.25	175.16		
1834			5/8 (.625)	520.27	366.27	236.51		
1474D			3/4 (.750)	595.37	419.14	270.64		
1836			7/8 (.875)	632.94	445.59	287.72		
1474E			1 (1.000)	670.08	471.73	304.61		
1452A			8-32	.375 (3/8)	3/8 (.375)	534.14	376.03	242.81
1452B					1/2 (.500)	686.89	483.57	312.25
1452C					5/8 (.625)	887.95	625.12	403.65
1452D	3/4 (.750)	957.59			674.14	435.31		
1452E	1 (1.000)	1235.90			870.08	561.83		
1876	7/8 (.875)	623.54			438.97	283.45		
1547E	1 (1.000)	694.71			489.07	315.80		
1877	1-1/2 (1.500)	1230.83			866.50	559.52		
1878	2 (2.000)	1257.62			885.36	571.70		
1802A	2-56	.156 (5/32)			3/16 (.187)	445.53	313.65	202.53
1802B			1/4 (.250)	479.19	337.35	217.84		
1802C			5/16 (.312)	496.38	349.45	225.65		
1802D			3/8 (.375)	496.38	349.45	225.65		
1548E			3/4 (.750)	537.48	378.39	244.33		
1879			7/8 (.875)	593.81	418.04	269.94		
1548F			1 (1.000)	616.89	434.29	280.43		
1881			1-1/4 (1.250)	856.27	602.81	389.25		
1882			1-1/2 (1.500)	1230.83	866.50	559.52		
1883			1-3/4 (1.750)	1257.62	885.36	571.70		
1884	2 (2.000)	1257.62	885.36	571.70				
1885	2-1/4 (2.250)	1289.69	907.94	586.28				
1886	2-1/2 (2.500)	1326.85	934.10	603.17				
1547	4-40	.187 (3/16)	1/4 (.250)	286.32	201.57	130.16		
1864			3/8 (.375)	329.36	231.86	149.72		
1657			1/2 (.500)	387.26	272.63	176.05		
1865			5/8 (.625)	474.09	333.76	215.51		
1657A			3/4 (.750)	523.58	368.60	238.01		
1866			7/8 (.875)	658.73	463.74	299.45		
1657B			1 (1.000)	687.69	484.13	312.62		
1889			1-1/2 (1.500)	1230.83	866.50	559.52		
1899			2 (2.000)	1322.56	931.08	601.22		
1547A			4-40	.250 (1/4)	1/4 (.250)	306.68	215.90	139.42
1547B	3/8 (.375)	358.70			252.53	163.06		
1547C	1/2 (.500)	437.52			308.01	198.89		
1867	5/8 (.625)	494.05			347.80	224.59		
1547D	3/4 (.750)	553.12			389.39	251.44		

NOTE: Spacers over 1.000" long are tapped .375" deep each end.



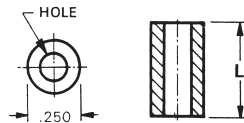
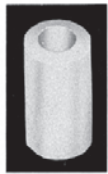
HEX THREADED NYLON STANDOFFS

Economical for terminal or printed circuit board supports. **MATERIAL:** Nylon 6/6.

Cat. No.	"L" Length (Inches)	Net Price Per 1000		
		1-499	500-999	1000-Up
4-40 THREAD				
1902A	1/4 (.250)	\$466.68	\$328.53	\$212.14
1902B	3/8 (.375)	477.62	336.24	217.12
1902C	1/2 (.500)	497.57	350.29	226.19
1902F	5/8 (.625)	433.42	305.12	197.03
1902D	3/4 (.750)	639.18	449.98	290.56
1902G	7/8 (.875)	488.20	343.69	221.93
1902E	1 (1.000)	643.09	452.74	292.34

Continued on next page....

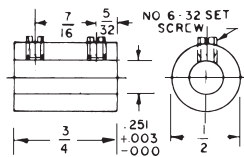
Cat. No.	"L" Length (Inches)	Net Price Per 1000		
		1-499	500-999	1000-Up
6-32 THREAD				
1903A	1/4 (.250)	\$466.68	\$328.53	\$212.14
1903B	3/8 (.375)	477.62	336.24	217.12
1903C	1/2 (.500)	497.57	350.29	226.19
1903F	5/8 (.625)	433.42	305.12	197.03
1903D	3/4 (.750)	639.18	449.98	290.56
1903G	7/8 (.875)	488.20	343.69	221.93
1903F	1 (1.000)	433.42	305.12	197.03
8-32 THREAD				
1904A	1/4 (.250)	466.68	328.53	212.14
1904B	3/8 (.375)	477.62	336.24	217.12
1904C	1/2 (.500)	497.57	350.29	226.19
1904F	5/8 (.625)	433.42	305.12	197.03
1904D	3/4 (.750)	639.18	449.98	290.56
1904G	7/8 (.875)	488.20	343.69	221.93
1904E	1 (1.000)	643.09	452.74	292.34



ROUND THRU-HOLE NYLON SPACERS

Economical for terminal or printed circuit board supports. **MATERIAL:** Nylon 6/6.

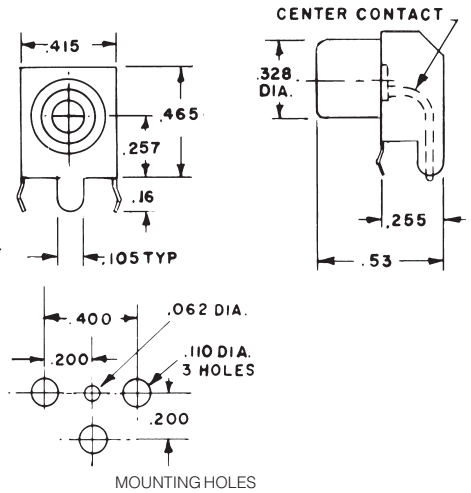
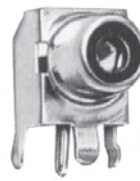
Cat. No.	"L" Length (Inches)	Net Price Per 1000		
		1-499	500-999	1000-Up
#4 SCREW, .120 HOLE				
875	1/8 (.125)	\$107.00	\$75.33	\$48.64
876	1/4 (.250)	116.18	81.79	52.81
877	3/8 (.375)	122.83	86.47	55.84
878	1/2 (.500)	130.26	91.71	59.21
879	5/8 (.625)	140.42	98.86	63.83
880	3/4 (.750)	142.78	100.51	64.91
881	7/8 (.875)	145.90	102.71	66.32
882	1 (1.000)	154.13	108.50	70.06
#6 SCREW, .140 HOLE				
883	1/8 (.125)	107.00	75.33	48.64
884	1/4 (.250)	116.18	81.79	52.81
885	3/8 (.375)	122.83	86.47	55.84
886	1/2 (.500)	130.26	91.71	59.21
887	5/8 (.625)	140.42	98.86	63.83
888	3/4 (.750)	142.78	100.51	64.91
889	7/8 (.875)	145.90	102.71	66.32
890	1 (1.000)	154.13	108.50	70.06
#8 SCREW, .171 HOLE				
891	1/8 (.125)	107.00	75.33	48.64
892	1/4 (.250)	116.18	81.79	52.81
893	3/8 (.375)	122.83	86.47	55.84
894	1/2 (.500)	130.26	91.71	59.21
895	5/8 (.625)	140.42	98.86	63.83
896	3/4 (.750)	142.78	100.51	64.91
897	7/8 (.875)	145.90	102.71	66.32
898	1 (1.000)	154.13	108.50	70.06



1/4" - 1/4" SHAFT COUPLING

Material: Brass, Nickel Plated (QQ-N-290). Two set screws hold shaft securely. Supplied unassembled.

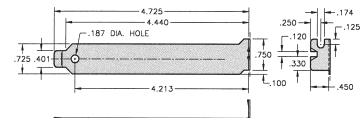
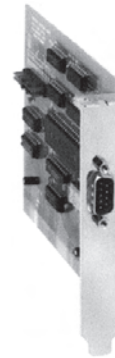
Cat. No.	Net Price
1453	\$2.51



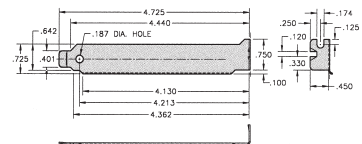
SNAP-FIT 90° PC PHONE JACK

Complete one piece jack for insertion into PC board. Time saving. No wiring required. **MATERIAL:** Shell: Steel. Contact: Brass.

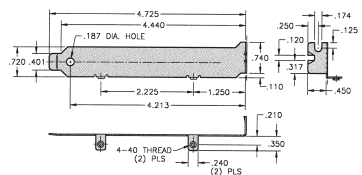
Cat. No.	Description	Net Price Per 1000
901	Tin Plate	\$1163.35
900	Gold Plate	1401.17



9200



9201



9202

Continued on next page....