

FIG 1. RECOMMENDED BREAKOVER VOLTAGE TEST CIRCUIT
(DISCHARGE CURRENT = 10-20MA, SENSITIVITY OF
PEAK VOLTAGE DETECT = 10-30MA)



SWITCHING GAS DISCHARGE TUBES LT SERIES GAS PLASMA VOLTAGE DEPENDENT SWITCHES

DEVICE RATINGS AND SPECIFICATIONS

Cat. No.	⁽¹⁾ V _{BO} (V)	V _S (V)	V _T @ 5A (V)	⁽²⁾ I _{DRM} (A)	⁽³⁾ I _{BO} (mA)	⁽⁴⁾ C _O (pF)	V _{BO} to V _T (nS)	Net Price
LT230A	195-265	184-276	15	1.0	50	2.0	25	\$6.75
LT800A	680-920	640-960	15	1.0	50	2.0	25	6.75

NOTES: ⁽¹⁾ Measured on recommended test circuit (fig. 1). ⁽²⁾ Measured @ 100 volts DC. ⁽³⁾ Current required for transition to on-state. ⁽⁴⁾ Measured @ 1 MHz, zero volt bias.

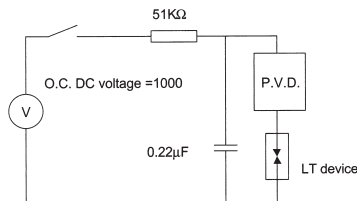
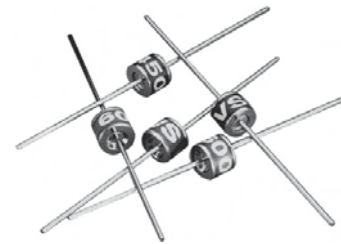


FIG 1. RECOMMENDED BREAKOVER VOLTAGE TEST CIRCUIT
(DISCHARGE CURRENT = 10-20MA; SENSITIVITY OF
PEAK VOLTAGE DETECT = 10-30MA)



SWITCHING GAS DISCHARGE TUBES VS SERIES GAS PLASMA VOLTAGE DEPENDENT SWITCHES

DEVICE RATINGS AND SPECIFICATIONS

Cat. No.	V _{BO} ⁽¹⁾ (V)	V _T @ 5A (V)	I _{DRM} ⁽²⁾ (A)	I _{BO} ⁽³⁾ (mA)	C _O ⁽⁴⁾ (pF)	V _{BO} to V _T (nS)	Net Price
VS230A	200-255	15	1.0	50	2.0	25	\$7.42
VS450A	350-550	15	1.0	50	2.0	25	7.42
VS600A	400-750	15	1.0	50	2.0	25	7.42

NOTES: ⁽¹⁾ Measured on recommended test circuit (fig. 1). ⁽²⁾ Measured @ 300 volts DC. ⁽³⁾ Current required for transition to on-state. ⁽⁴⁾ Measured @ 1 MHz, zero volt bias.



GAS DISCHARGE TUBES HIGH PERFORMANCE BATA RANGE GREENTUBE™ SL1002 SERIES GAS PLASMA ARRESTERS

LITTELFUSE 2 TERMINAL MINI ARRESTER SERIES TOTALLY NON-RADIOACTIVE, UL RECOGNIZED

Cat. No.	DC Voltage @ 100V/sec (V)	Max Dynamic Breakover Voltage @ 100V/μs (Vbr)	Max Dynamic Breakover Voltage @ 1 kV/μs (Vbr)	Max Repetitive Impulse Discharge Current ⁽²⁾ (kA)	Max Single Impulse Discharge Current ⁽⁵⁾ (A)	Max Single Impulse Discharge Current ⁽⁶⁾ (A)	Max Leakage Current ⁽³⁾ (nA)	Max Capacitance ⁽⁴⁾ (pF)	Holdover Voltage ⁽¹⁾ (V)	Nominal On-State Voltage @ 1A (V)	Net Price
SL1002A090SM	90	360	700	5	2	2	100	1.2	50	20	\$1.43
SL1002A230SM	230	400	500	5	2	2	100	1.2	135	20	1.43

NOTES: ⁽¹⁾ Test according to ITU-T Rec.K12. ⁽²⁾ 10 shots, 8/20μs wave form per IEC 61000-4-5. ⁽³⁾ Measured @ 100 volts. ⁽⁴⁾ Measured @ 1 MHz, zero volt bias. ⁽⁵⁾ Measured with 2/10μs wave form. ⁽⁶⁾ Measured with 10/350μs wave form

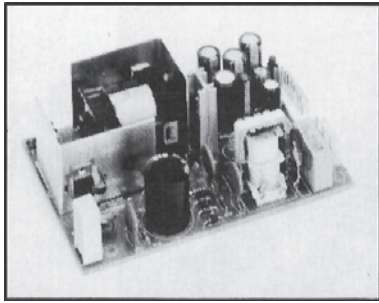


Cat. No.	Net Price
150mW SWITCHING DIODES/SOD-523	
1N4148WT	\$.15
1N4448HWS-7	.15
200mW SWITCHING DIODES/SOD-323	
1N4148WS	.15
1N4448HWS	.15
1N4448WS	.15
BAV16WS	.16
BAV19WS	.21
BAV20WS	.21
BAV21WS	.21
200mW SWITCHING DIODE ARRAYS/SOT-363	
BAS16TW	.31
BAV199DW	.37
BAV70DW	.37
BAV756DW	.37
BAV99BRW	.50
BAV99DW	.37
BAW567DW	.37
BAW56DW	.37
MMBD4148TW	.31
MMBD4448DW	.15
MMBD4448HADW	.37
MMBD4448HAQW	.45
MMBD4448HCDW	.37
MMBD4448HSDW	.37
MMBD4448HTW	.31
SDA004	00.00
SDA006	00.00
250mW LOW LEAKAGE SIGNAL DIODES/SOD-123	
BAV116W	.15
BAV19W-7-F	.19
BAV20W-7-F	.19
BAV21W-7-F	.19
400mW SWITCHING DIODES/SOD-123	
1N4148W-13-F	.14
1N4448W-7-F	.02
BAV16W-7-F	.14
BAV3004W	.30
150mW NPN TRANSISTORS/SOT-523	
2DC4617Q	.15
2DC4617R	.15
2DC4617S	.15
BC847AT	.15
BC847BT	.15
BC847CT	.15
MMBT2222AT	.15
MMBT3904T	.15
MMBT4401T	.15
400 W TRANSIENT VOLTAGE SUPPRESSORS/SMA	
SMAJ5.0(C)A	.55
SMAJ6.0(C)A	.55
SMAJ7.0(C)A	.55
SMAJ7.5(C)A	.55
SMAJ8.0(C)A	.55
SMAJ9.0(C)A	.55
SMAJ10(C)A	.55
SMAJ12(C)A	.55
SMAJ13(C)A	.55
SMAJ14(C)A	.55
SMAJ18(C)A	.55
SMAJ20(C)A	.55
SMAJ22(C)A	.55
SMAJ24(C)A	.55
SMAJ28(C)A	.55
SMAJ30(C)A	.55
SMAJ33(C)A	.55
SMAJ40(C)A	.55

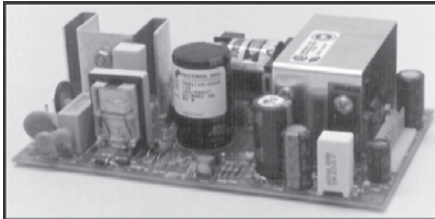
Cat. No.	Net Price
400 W TRANSIENT VOLTAGE SUPPRESSORS/SMA (CONT'D)	
SMAJ43(C)A	\$.55
SMAJ48(C)A	.55
SMAJ51(C)A	.55
SMAJ58(C)A	.55
SMAJ60(C)A	.55
SMAJ70(C)A	.55
SMAJ75(C)A	.55
SMAJ85(C)A	.55
SMAJ90(C)A	.55
SMAJ110(C)A	.55
SMAJ120(C)A	.55
SMAJ150(C)A	.55
SMAJ160(C)A	.55
SMAJ170(C)A	.55
SMAT70A	.50
600 W TRANSIENT VOLTAGE SUPPRESSORS/SMB	
SMBJ5.0(C)A	.92
SMBJ6.0(C)A	.92
SMBJ7.0(C)A	.92
SMBJ7.5(C)A	.92
SMBJ8.0(C)A	.92
SMBJ9.0(C)A	.92
SMBJ10(C)A	.92
SMBJ12(C)A	.92
SMBJ13(C)A	.92
SMBJ14(C)A	.92
SMBJ18(C)A	.92
SMBJ20(C)A	.92
SMBJ22(C)A	.92
SMBJ24(C)A	.92
SMBJ28(C)A	.92
SMBJ30(C)A	.51
SMBJ33(C)A	.92
SMBJ40(C)A	.92
SMBJ43(C)A	.92
SMBJ48(C)A	.92
SMBJ51(C)A	.92
SMBJ58(C)A	.92
SMBJ60(C)A	.92
SMBJ70(C)A	.92
SMBJ75(C)A	.92
SMBJ85(C)A	.92
SMBJ90(C)A	.57
SMBJ110(C)A	.92
SMBJ120(C)A	.92
SMBJ150(C)A	.92
SMBJ160(C)A	.92
SMBJ170(C)A	.92
SMBT70A	.60
1500 W TRANSIENT VOLTAGE SUPPRESSORS/SMC	
SMCJ5.0(C)A	1.72
SMCJ6.0(C)A	1.72
SMCJ7.0(C)A	1.72
SMCJ7.5(C)A	1.72
SMCJ8.0(C)A	1.72
SMCJ9.0(C)A	1.72
SMCJ10(C)A	1.72
SMCJ12(C)A	1.72
SMCJ13(C)A	1.72
SMCJ14(C)A	1.72
SMCJ18(C)A	1.72
SMCJ20(C)A	1.72
SMCJ22(C)A	1.72
SMCJ24(C)A	1.72
SMCJ28(C)A	1.72
SMCJ30(C)A	1.72
SMCJ33(C)A	1.72
SMCJ40(C)A	1.72
SMCJ43(C)A	1.72
SMCJ48(C)A	1.72
SMCJ51(C)A	1.72

Cat. No.	Net Price
1500 W TRANSIENT VOLTAGE SUPPRESSORS/SMC (CONT'D)	
SMCJ58(C)A	\$1.72
SMCJ60(C)A	1.72
SMCJ70(C)A	1.72
SMCJ75(C)A	1.72
SMCJ85(C)A	1.72
SMCJ90(C)A	1.72
SMCJ100(C)A	1.72
SMCJ110(C)A	1.72
SMCJ120(C)A	1.72
SMCJ150(C)A	1.72
SMCJ160(C)A	1.72
SMCJ170(C)A	1.72
1500 W TRANSIENT VOLTAGE SUPPRESSORS/DO-201AD	
1.5KE6V8(C)A	.87
1.5KE7V5(C)A	.87
1.5KE8V2(C)A	.87
1.5KE9V1(C)A	.87
1.5KE10(C)A	.87
1.5KE11(C)A	.87
1.5KE12(C)A	.87
1.5KE13(C)A	.87
1.5KE15(C)A	.87
1.5KE16(C)A	.87
1.5KE18(C)A	.87
1.5KE20(C)A	.87
1.5KE22(C)A	.87
1.5KE24(C)A	.87
1.5KE27(C)A	.87
1.5KE30(C)A	.87
1.5KE33(C)A	.87
1.5KE36(C)A	.87
1.5KE39(C)A	.87
1.5KE43(C)A	.87
1.5KE47(C)A	.87
1.5KE51(C)A	.87
1.5KE56(C)A	.87
1.5KE62(C)A	.87
1.5KE68(C)A	.87
1.5KE75(C)A	.87
1.5KE82(C)A	.87
1.5KE91(C)A	.87
1.5KE100(C)A	.87
1.5KE110(C)A	.87
1.5KE120(C)A	.90
1.5KE130(C)A	.90
1.5KE150(C)A	.90
1.5KE160(C)A	.90
1.5KE170(C)A	.90
1.5KE180(C)A	.90
1.5KE200(C)A	.90
1.5KE220(C)A	1.25
1.5KE250(C)A	1.25
1.5KE300(C)A	1.25
1.5KE350(C)A	1.25
1.5KE400(C)A	1.25
1.0A SCHOTTKY RECTIFIERS/DO-41	
1N5817	00.00
1N5818	00.00
1N5819	00.00
1.0A SUPER-/ULTRA-FAST RECOVERY RECTIFIERS/DO-41	
UF1001TR	.11
UF1002-B	.22
UF1003-TR-5000	.11
UF1004	.20
UF1005	.22
UF1006	.25
UF1007	.27

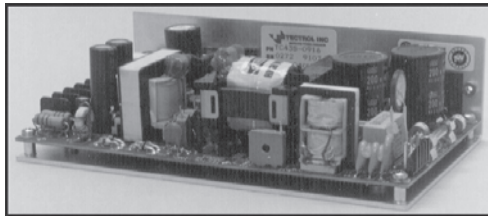
Continued on next page....



TO51-10



TO81-10



TO151-10

SWITCH MODE POWER SUPPLIES UNIVERSAL INPUT SERIES (90-264 VAC)

STANDARD FEATURES:

- Efficiency Above 70%
- Short Circuit Protection
- Meets FCC, VDE EMI Standards
- UL, CSA (TUV) VDE Approved (or in Process of Approval)
- Over Voltage Protection
- Inrush Current Limited & Soft Start
- Current & Power Limited
- Low Ripple & Noise

UNIVERSAL INPUT SERIES DIMENSIONS

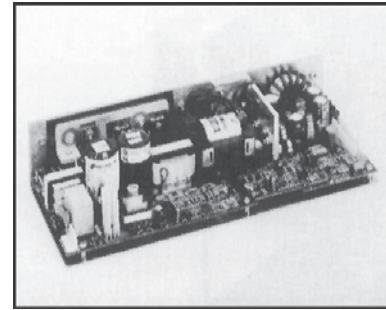
Cat. No.	Dimensions Inches (mm)		
	Width	Length	Depth
TO31-10/11/12	3.0 (76)	5.0 (127)	1.45 (37)
TO39-10B	3.0 (76)	5.0 (127)	1.45 (37)
TO51-10/11/12	3.75 (95)	5.7 (145)	1.7 (43)
TO81-10	4.0 (102)	6.5 (165)	1.6 (41)
TO101-10/11/12	4.25 (108)	7.75 (197)	1.9 (48)
TO131-10/11/12	4.5 (114)	7.75 (197)	2.3 (58)
TO151-10/12	4.45 (113)	7.5 (191)	2.0 (51)
TO221-10/11/12	5.0 (127)	9.0 (229)	2.5 (63.5)

UNIVERSAL INPUT SERIES (90-264VAC), VERY LOW CROSS-REGULATION BETWEEN MAIN AND AUXILIARY RAILS

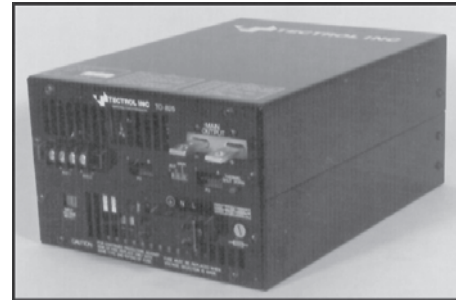
Cat. No.	Watts	Output Voltage and Current				Net Price
		#1	#2	#3	#4	
LOW POWER, UNIVERSAL INPUT, SINGLE/MULTI-OUTPUT						
TO31-10	30	5V/3A	+12V/1.5A	-12V/35A	—	\$73.80
TO31-11	30	5V/3A	+24V/0.8A	-12V/35A	—	59.04
TO31-12	30	5V/3A	+15V/1.5A	-15V/35A	—	64.94
TO39-10B	40	5V/4.5A	+12V/2A	-12V/35A	—	76.80
TO51-10	50	5V/6A	+12V/2A	-12V/0.5A	-5V/0.1A	77.38
TO51-12	50	5V/6A	+15V/1.5A	-15V/0.5A	-5V/0.1A	77.38

MEDIUM POWER, UNIVERSAL INPUT, MULTI-OUTPUT

TO81-10	80	5V/10A	+12V/3A	-12V/1.25A	+12V/1A	116.67
TO101-10	100	5V/12A	+12V/3.5A	-12V/1.5A	-5V/0.3A	160.19
TO101-11	100	5V/12A	+12V/3.5A	-12V/1.5A	+24V/1.5A	160.19
TO101-12	100	5V/12A	+15V/3.5A	-15V/1.5A	-5V/0.3A	160.19
TO131-10	130	5V/15A	+12V/4A	-12V/1.5A	-5V/0.3A	202.38
TO151-10	150	5V/25A	+12V/4A	-12V/3A	—	223.81
TO151-12	150	5V/25A	+15V/4A	-15V/3A	—	223.81
TO221-10	220	5V/30A	+12V/6A	-12V/1.5A	-5V/1A	279.76
TO221-12	220	5V/30A	+15V/6A	-15V/1.5A	-5V/1A	279.76



TO304-10



TO825-10B

SWITCH MODE POWER SUPPLIES PROFESSIONAL POWER SUPPLIES

SEMI-MODULAR POWER SUPPLIES: Short circuit protected. Inrush current limited and soft start. No cross-regulation between main and auxiliary rails. High surge load capability. Remote sensing on main output. HIGH-POWER SINGLE/MULTIPLE OUTPUT: Up to 5 fully regulated outputs. Forced current sharing for parallel redundant operation. Power fail warning. Front panel AC select.

STANDARD FEATURES:

- 77-86% Efficiency
- Inhibit—Active Low
- Over Voltage Protection
- Over Temperature Protection
- Power Trading Between Secondaries
- UL, CSA & (TUV) VDE Approved (or in Process of Approval)
- High surge capability for starting motor loads, disk-drives, etc.
- Current Limited Outputs
- Meets FCC & VDE EMI Standards

PROFESSIONAL POWER SUPPLIES DIMENSIONS

Cat. No.	Dimensions Inches (mm)		
	Width	Length	Depth
TO204-10/11	5.0 (127)	10.5 (267)	2.6 (66)
TO304-10/12	5.0 (127)	12.0 (305)	2.6 (66)
TO404-10/17	5.0 (127)	14.0 (356)	2.6 (66)
TO825-10B	8.0 (203)	11.75 (298)	5.0 (127)

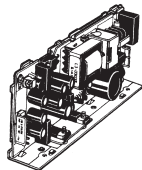
PROFESSIONAL POWER SUPPLIES

Cat. No.	Watts	Output Voltage and Current				Net Price
		#1	#2	#3	#4	
SEMI-MODULAR POWER SUPPLIES						
TO204-10	250	5V/30A	12V/8A	12V/8A	—	\$355.95
TO404-10	450	5V/50A	12V/10A	12V/10A	+24V/12A	594.05
TO404-17	450	5V/50A	15V/10A	15V/10A	+24V/12A	594.05

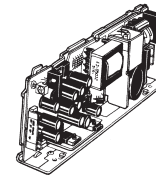
HIGH-POWER SINGLE/MULTIPLE OUTPUT

TO825-10B	825	5V/150A	12V/20A	12V/20A	12V/20A	1375.00
-----------	-----	---------	---------	---------	---------	----------------

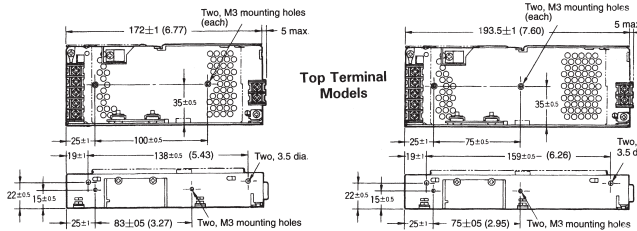
NOTE: Modular add-in regulators are available for TO204, TO304 and TO404 output #4.



30-W MODELS
NOTE: UNITS: MM (INCH)



50-W MODELS



S8E3 TRIPLE OUTPUT SWITCH-MODE POWER SUPPLY

- Miniature power supplies, 30W and 50W
- Open-frame or enclosed models available
- All models have screw terminals
- Voltage input is AC120V

Power Ratings	30W	50W
Efficiency	73%	
Input		
Frequency	47 to 450Hz	
Noise filter	Yes	
Output		
Adjustment	5% (on V1 only)	
Ripple/Noise	2% (p-p max)	
Load regulation	0.8% max (for V1) 2.5% max (for V2 and V3)	
Line regulation	0.4% max (at 100% load)	
Overload protection	105% for V1 (automatic reset)	

Cat. No.	Style	V1		V2		V3		Dims	Net Price
		V	I	V	I	V	I		
30W									
S8E3-03031B	Open-frame	5V	3.0A	12V	1.2A	-12V	0.3A	196×69×33	\$135.00
S8E3-03031E	Covered	5V	3.0A	12V	1.2A	-12V	0.3A		139.00
S8E3-03032B	Open-frame	5V	3.0A	15V	1.0A	-15V	0.3A		135.00
S8E3-03032E	Covered	5V	3.0A	15V	1.0A	-15V	0.3A		139.00
50W									
S8E3-05031B	Open-frame	5V	5.0A	12V	1.5A	-12V	0.5A	217×69×33	160.00
S8E3-05031E	Covered	5V	5.0A	12V	1.5A	-12V	0.5A		163.00
S8E3-05032B	Open-frame	5V	5.0A	15V	1.2A	-15V	0.5A		160.00
S8E3-05032E	Covered	5V	5.0A	15V	1.2A	-15V	0.5A		163.00

GIVING YOU WHAT YOU WANT!



- SPEED
- PRODUCTS
- INFORMATION
- PROCUREMENT
- LINKS

IT'S ALL HERE... www.e-sonic.com



WIDE RANGE SERIES



DOMESTIC SERIES

WIDE RANGE INPUT SERIES SWITCHING POWER SUPPLIES

APPROVED BY ALL MAJOR REGULATORY AGENCIES

A/C Input: 90-264 VAC 47/63 Hz via IEC320 Connector. Inrush current: Internally by thermister. Cold start peak current at 250 VAC 25 amps max. Input protection: Internal input line fuse. Regulation: +/-5% typical. Overload protection: Output protected against overload and short circuit. Automatic recovery upon removal of overload condition. Size: MIXX = 5" x 3" x 1.3", M420XX = 4.3" x 2.5" x 1.3", WRI = 6.3" x 3.82" x 2.66", W15XX = 3.3" x 2" x 1.3", W40XX = 4.13" x 2.36" x 1.2", W42XX = 5.8" x 3.3" x 1.5".

Cat. No.	Output 1		Output 2		Output 3		Max. Watts	NetPrice
	VDC	A	VDC	A	VDC	A		
REGULATED TABLETOPS—SINGLE OUTPUT								
W1505-760	5	2.5	—	—	—	—	13	\$53.37
M12007-760	7	2.9	—	—	—	—	20	112.77
W1512-760	12	1.25	—	—	—	—	15	53.37
M42012-760	12	1.7	—	—	—	—	20	58.96
M12612-760	12	2.17	—	—	—	—	26	112.23
W4012-760	12	3.8	—	—	—	—	46	103.25
M12815-760	15	1.9	—	—	—	—	28	112.23
W4015-760	15	3.4	—	—	—	—	51	103.25
M12818-760	18	1.56	—	—	—	—	28	112.77
W4018-760	18	2.8	—	—	—	—	50	103.25
M12824-760	24	1.17	—	—	—	—	28	112.23
W4024-760	24	2.1	—	—	—	—	50	103.25
REGULATED TABLETOPS—DUAL OUTPUT								
W4221-D5	5	3	12	2.5	—	—	42	172.08
WRI3021-D5	5	2	12	1.5	—	—	30	174.14
WRI2721-D5*	5	4	12	0.5	—	—	27	155.37
REGULATED TABLETOPS—TRIPLE OUTPUT								
W4231-D5	5	3	12	2.5	-12	0.5	42	172.08
W4232-D5	5	4.8	12	1.5	-12	0.5	42	172.08

*Minimum load 2 watts for full regulation.

DOMESTIC INPUT SERIES LINEAR POWER SUPPLIES

APPROVED BY CSA, NRTL(UL)

A/C Input: 108-132 VAC 80 Hz. Regulation: +/-6%. Overload protection: Output protected against overload and short circuit. Automatic recovery upon removal of overload condition. Size: WP11XX = 2.2" x 1.8" x 1.1", WP12XX = 3" x 2" x 1", WMXXX = VARIOUS.

Cat. No.	Output 1		Output 2		Output 3		Max. Watts	NetPrice
	VDC	A	VDC	A	VDC	A		
REGULATED WALLMOUNT UNITS—SINGLE OUTPUT								
WM050-1950-760	5	1.2	—	—	—	—	6	\$28.68
WM075-1950-760	5	1.5	—	—	—	—	7.5	47.39
WP1105-760	5	1.6	—	—	—	—	8	38.69
WM101-1950-760	5	2	—	—	—	—	10	47.62
WP1205-760	5	2.4	—	—	—	—	12	40.53
WM060-1950-760	12	0.5	—	—	—	—	6	37.41
WP1112-760	12	0.8	—	—	—	—	10	40.03
WP1212-760	12	1	—	—	—	—	12	40.53
WP1224-760	24	0.5	—	—	—	—	12	40.53
WM144-1950-S*	12	1.2	—	—	—	—	14.4	54.87
WM061-1950-760	15	0.4	—	—	—	—	6	48.97
WP1218-760	18	0.67	—	—	—	—	12	40.72
WM080-1950-760	24	0.33	—	—	—	—	8	34.92
REGULATED—DUAL OUTPUT								
WM090-1950-D5	5	0.7	-5	0.7	—	—	7	52.63
WM112-D5	5	0.8	12	0.7	—	—	12.4	60.43
WM070-1950-D5	5	0.6	12	0.33	—	—	7	44.27
WM072-1950-D5	12	0.3	-12	0.3	—	—	7.2	42.40
WM071-1950-D5	15	0.24	-15	0.24	—	—	7.5	44.27
REGULATED—TRIPLE OUTPUT								
WM063-1950-D5	5	0.6	12	0.16	-12	0.16	6.3	51.13
WM113-S	5	0.86	12	0.3	-12	0.3	11.3	63.60

*S = Shield DC output cable.



FAST-TRACK POWER SUPPLIES

FEATURES: Wide range AC input. Fully enclosed plastic case. Fully regulated output. High efficiency. Over voltage and current protection. Operating temperature: 0°C to 40°C. EMI: Meets FCC class B, CISPR 22 class B. Safety: UL, CSA and CE Marked. Output connector: Barrel type, except FW72 and FW100 which are 5 pin DIN. **SPECIFICATIONS:** Input voltage: 100-240VAC. Input frequency: 47-63Hz. Input connector: 3 pin IEC 320 input receptacle. Ripple/noise (V_{pp}): +/-1% (20 MHz bandwidth). AC cord optional.

Cat. No.	Voltage	Power	Current	Dimensions (In.)	Net Price
FW1805-760	5V	15W	3.00A	3.35 x 1.97 x 1.3	\$41.25
FW1812-760	12V	18W	1.50A	3.35 x 1.97 x 1.3	40.60
FW1824-760	24V	18W	0.75A	3.35 x 1.97 x 1.3	40.60
FW3012-760	12V	30W	2.5A	4.25 x 2.54 x 1.3	58.36
FW3024-760	24V	30W	1.25A	4.25 x 2.54 x 1.3	58.36
FW5012-760	12V	50W	4.16A	5.0 x 3.0 x 1.3	67.34
FW5024-760	24V	50W	2.08A	5.0 x 3.0 x 1.3	67.34
FW7212-D5	12V	72W	6.0A	6.5 x 3.85 x 2.6	88.31
FW7224-D5	24V	72W	3.0A	6.5 x 3.85 x 2.6	88.31
FW10012-D5	12V	100W	8.0A	6.5 x 3.85 x 2.6	65.13
FW10024-D5	24V	100W	4.0A	6.5 x 3.85 x 2.6	90.76