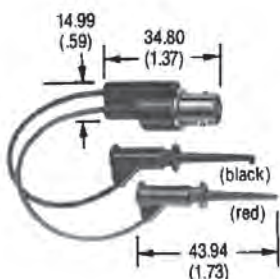


OVERALL LENGTH: 177.8 MM (7.0)

BNC FEMALE TO STACKING BANANA PLUGS

1ST END: BNC Female. Brass body, tarnish resistant plated. Center contact beryllium copper, gold plated. Nominal impedance: 50 ohms. Insulation: Polypropylene, black. **WIRE:** 18 AWG, 65 x 36 t.c., PVC insulated, 3.66mm (.144) O.D. One black and one red. **2ND END:** Stacking Banana Plugs. Brass body, beryllium copper spring, nickel plated. Insulation: Polypropylene, one black and one red. **RATING:** Operating voltage: 500 VRMS max.; +55°C. (+131°F) max.

Cat. No.	Length	Net Price
3073	177.8mm (7.0)	\$10.86

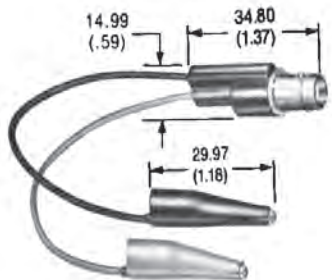


OVERALL LENGTH: 177.8 MM (7.0)

BNC FEMALE TO MICROGRABBER TEST CLIPS

This molded breakout converts a coaxial cable with a BNC male to a test cable with clips. **1ST END:** BNC Female. Brass body, tarnish resistant plated. Center contact, beryllium copper, gold plated. Nominal Impedance: 50 Ohms. Insulation: Polypropylene, black. **WIRE:** 20 AWG, 41 x 36 t.c., PVC insulated, 2.21mm (.087) O.D., one red and one black. **2ND END:** Micrograbber. Contacts, beryllium copper, gold plated. Glass filled nylon insulation, one red and one black. **RATING:** Operating voltage: 150V max.; +55°C. (+131°F) max.

Cat. No.	Length	Net Price
5188	177.8mm (7.0)	\$14.88



OVERALL LENGTH: 177.8 MM (7.0)

BNC FEMALE TO TEST CLIPS

1ST END: BNC Female. Brass body, tarnish resistant plated. Center contact, beryllium copper, gold plated. Nominal Impedance: 50 ohms. Insulation: polypropylene, black. **WIRE:** 18 AWG on alligator clips. 20 AWG on miniature clips. One black and one red. **2ND END:** Alligator clips, Steel, nickel plated. Minigators, Steel, cadmium plated. Vinyl boots, one black and one red. **RATING:** Operating voltage: 500 VRMS max.; +50°C. (+122°F) max.

Cat. No.	Description	Length	Net Price
2630	Alligator Clips	177.8mm	\$11.65
2631	Minigator Clips	177.8mm	11.65



PRECISION ELECTRONIC PROBE KIT WITH REPLACEMENT TIPS

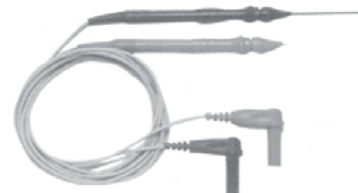
This probe kit has the smallest package available, with all the features of larger probes including ergonomic styling and a 1000 volt rating. Kit contains a pair (black/red) of Precision Electronic Probes, and five sets of .040" dia. Replacement tips. Included are 2 ea.: 1" long stainless Steel Tips, 3" long stainless Steel Tips, Gold-plated Plunger Tips with Sharp Point, Gold-plated 3-point Plunger Tips, and Gold-plated 4-point Plunger Tips. Supplied in a reusable plastic case. Plugs fit most Fluke, Tektronix, HP, and Wavetek Meters. Conforms to IEC1010-2-031, Overvoltage Category III, 1000V. Max. current 3 Amps.

Cat. No.	Description	Net Price
6341	Includes 5 tips	\$38.18

PRECISION ELECTRONIC PROBE SETS

This probe has the smallest package available, with all the features of larger probes including ergonomic styling and a 1000 volt rating. Set contains two probes, one black and one red. Fit most DMMs from Fluke, Tektronix, HP, Keithley, Amprobe, and Wavetek Meters. Conforms to IEC1010-2-031, Overvoltage Category III. **RATING:** 1000V, 3 Amps Max.

Cat. No.	Probe Tips	Net Price
6275	Stainless	\$19.23
6342	Gold Plated	21.92



RETRACTABLE TIP TEST PROBES SHARP, THIN TIPS FOR HARD-TO-REACH PLACES

Silicone insulated 4 ft. leads fit most meters from Fluke, Wavetek (Meterman), HP, Amprobe, Greenlee and others. Fully insulated tip extends to 3'. Durable .40" stainless-steel tips reach into inaccessible areas. Set of 2 probes, one black and one red.

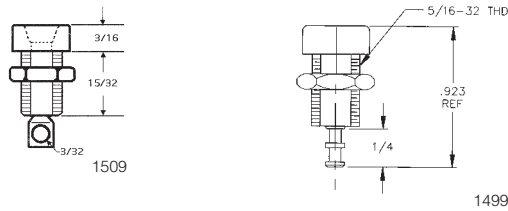
Cat. No.	Plug Type	Ratings	Net Price
5953A	Right-angle DMM	CAT II 600V	\$24.75
5952A	Stacking banana	30VAC, 70VDC	24.75



SMD MICROTIP TEST PROBE

The microtip is specially designed to probe SMD contacts. It features a stainless steel needle point tip that is flexible to help prevent damage to the SMD lands. The microtip is curved to aid in probing of hard to reach areas. **1ST END:** SMD Microtip Test Probe. Chuck, brass, nickel plated. Replaceable microtip, stainless steel. Insulation: nylon. **WIRE:** 20 AWG 41 x 36 t.c., PVC insulation, 2.21mm (.087) O.D. **2ND END:** Stacking Banana Plug. Brass body, beryllium copper spring, nickel plated. Insulation: Polypropylene. **RATING:** 1200V AC/DC; 5 amps; +55°C. (+131°F) max.

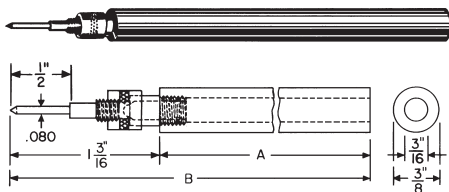
Cat. No.	Colour	Length	Net Price
5144-48-0	Black	1219.2 (48.0)	\$13.83
5144-48-2	Red	1219.2 (48.0)	13.83



INSULATED BANANA JACKS

MOUNTING: Jacks mount and are insulated from panel in 5/16" holes. **INSULATION MATERIAL:** Polycarbonate. Both jacks are held in place with a nut (supplied). **RATING:** 15 amps AC for 10°C temperature rise, continuous duty. Voltage 1 KVAC. 5/16-32 body thread. **HEAD DIA.:** 7/16" **HEAD HEIGHT:** 3/16". **BODY LENGTH:** 15/32".

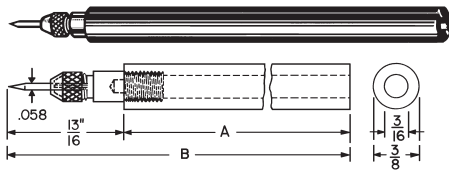
Cat. No.	Colour	I.D. (Inches)	Net Price
STANDARD ALL INSULATED "D" BODY			
1509-102	Red	.161	\$1.07
1509-103	Black	.161	1.07
1499-102	Red	.161	1.68
1499-103	Black	.161	1.68



SOLDERLESS TEST PROD—THREADED TYPE

HANDLE: Molded Butyrate, per Fed. Spec. L-P349A, Type 3, Class MS. Red or Black. **PLUG:** Brass, nickel plated. **RATING:** 12 Amps AC for 10°C Temp. rise, continuous duty. **DESCR.:** Solderless: Wire fits through handle and body of plug, then wraps around screw portion and is tightened with knurled collar.

Cat. No.	Colour	Handle (A)	Overall (B)	Net Price
302-102	Red	4"	5 1/4"	\$12.22
302-103	Black	4"	5 1/4"	12.22
303-102	Red	5 1/2"	6 3/4"	12.22
303-103	Black	5 1/2"	6 3/4"	12.22



PHONO NEEDLE TEST PROD

HANDLE: Molded Butyrate, per Fed. Spec. L-P349A, Type 3, Class MS. Red or Black. **PLUG:** Brass, nickel plated. **RATING:** 12 Amps AC for 10°C Temp. rise, continuous duty. **DESCR.:** Removable chuck for easy replacement or broken needles. Needle pierces corrosion or plating for positive reading.

Cat. No.	Colour	Handle (A)	Overall (B)	Net Price
317-102	Red	4"	4 13/16"	\$7.60
317-103	Black	4"	4 13/16"	7.60
318-102	Red	5 1/2"	6 9/16"	7.79
318-103	Black	5 1/2"	6 9/16"	7.79



R.F. PATCH CORDS

Wire: RG 58/U coaxial cable. Insulation: PE. Impedance: 50 ohms. Jacket: Black PVC.

Cat. No.	Length (Inches)	Net Price
1580-24	24	\$15.52
1580-36	36	16.12
1580-48	48	17.01
1580-60	60	17.34



R.F. PATCH CORD

Wire: RG 58/U coaxial cable. Insulation: PE. Impedance: 50 ohms. Jacket: Black PVC.

Cat. No.	Length (Inches)	Net Price
1581-12	12	\$17.99
1581-24	24	18.98
1581-36	36	19.26
1581-48	48	22.92
1581-60	60	25.29



BNC MALE PATCH CORDS

Wire: RG 58/U coaxial cable. Insulation: Polyethylene. Impedance: 50 ohms CTR. Jacket: Black PVC.

Cat. No.	Length (Inches)	Net Price
1584-12	12	\$15.20
1584-24	24	16.02
1584-36	36	18.42
1584-60	60	21.92



BNC MALE PATCH CORDS

Wire: RG 58/U coaxial cable. Insulation: Polyethylene. Impedance: 50 ohms CTR. Jacket: Black PVC.

Cat. No.	Length (Inches)	Net Price
1587-12	12	\$21.21
1587-24	24	22.44
1587-36	36	24.80
1587-48	48	31.02



MODEL 9361

Optional, Screw-on Alligator Clip Adapters.

Cat. No.	Colour	Description	Net Price
9361-102	Red	Standard	\$2.82
9361-103	Black	Standard	2.82



TL970 HOOK AND PINCER KIT

Handy all-in-one kit. Includes TL940, TL950, TL960.

Cat. No.	Net Price
TL970	\$91.00



H900 TEST LEAD HOLDER

Heavy duty construction with mounting holes. 10 slots for wires up to 0.320 in. dia. Overall dimensions: 11 in. L x 3.5 in. W x 1.25 in. H.

Cat. No.	Net Price
H900	\$24.00



TL221 SUREGRIP™ SILICONE TEST LEAD EXTENSION KIT

Superior strain relief. Includes two adapters to extend leads 1.5 m. CAT III 1000 V, 10 A, CAT IV 600 V, 10 A.

Cat. No.	Net Price
TL221	\$29.00



TL222 SUREGRIP™ SILICONE INSULATED TEST LEADS

Recommended for use with AC220, AC280, AC283 test clips. Superior strain relief. CAT III 1000 V, 10 A, CAT IV 600 V, 10 A.

Cat. No.	Net Price
TL222	\$29.00



TL224 SUREGRIP™ SILICONE INSULATED TEST LEADS

1.5 m silicone-insulated wire resists heat and cold. Superior strain relief. CAT III 1000 V, 10 A, CAT IV 600 V, 10 A.

Cat. No.	Net Price
TL224	\$29.00



TL27 HEAVY DUTY TEST LEADS

Rugged EPDM insulation. 1.5 m long with shrouded, straight connectors and excellent strain reliefs on each end. CAT III 1000 V, 10 A, CAT IV 600 V, 10 A.

Cat. No.	Net Price
TL27	\$32.00



TP1, TP2, TP4 AND TP38 SLIM REACH™ TEST PROBES

Slender probe bodies for probing closely spaced or recessed points. TP1 has a flat blade ideal for electrical wall sockets. TP2 has 2 mm diameter tip for precise electronic probing. TP4 has 4 mm diameter tip ideal for European electrical wall sockets. TP38 has stainless steel probe insulated to 4 mm from end. CAT III 1000 V, 10 A, CAT IV 600 V, 10 A.

Cat. No.	Net Price
TP1	\$16.00
TP2	16.00
TP4	16.00
TP38	16.00

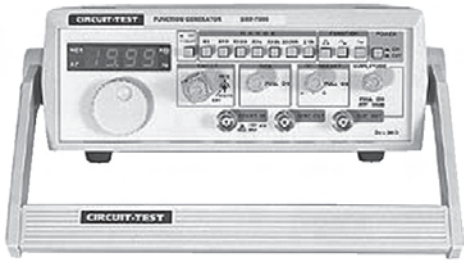


TP220 SUREGRIP™ INDUSTRIAL TEST PROBES

Sharp, 1/2 in. stainless steel tip provides reliable contact. Flexible finger barrier improves grip. CAT III 1000 V, 10 A, CAT IV 600 V, 10 A.

Cat. No.	Net Price
TL220	\$72.00

TEST INSTRUMENTS AND ACCESSORIES



SWF-7000

FUNCTION GENERATORS

The Circuit-Test Sweep Function Generator is a versatile signal source which can be used as a function, pulse, or sweep generator. These generators feature sine, square, triangle, and pulse waveform outputs covering a frequency range of 0.02Hz to 2MHz. Also include a built-in continuously variable DC offset and variable attenuation.

Cat. No.	Range	Frequency Counter	Display	Net
SWF-6000	0.02 Hz–2 MHz	No	Dial Pointer Display	\$441.49
SWF-7000	0.02 Hz–2 MHz	Yes	Digital Display	480.00

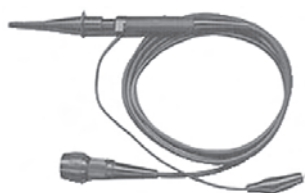


OS-2100

DUAL TRACE OSCILLOSCOPE

Two channel analog oscilloscope. This laboratory grade test instrument provides quality and reliability at a reasonable price. With a wide range of electronic measurements they are ideal for troubleshooting audio, computer, or video circuits. **FEATURES:** Dual trace, two 10 × 1 × switchable probes, two year warranty, 0.1µs/Div-0.2s/Div(+/-3%) sweep time, sensitivity at 5mV-5V/Div @ × 1 mode +/-3% and sensitivity at 1mV-1V/Div @ × 5 mode +/-5%.

Cat. No.	Bandwidth	Delayed Sweep	CRT Acceleration	Rise Time	Net
OS-2030	30 MHz	No	2.1kV	17.5nS	\$786.46
OS-2100	100 MHz	Yes	14kV	2.5nS	1968.00



OP-60A



OP-150

OSCILLOSCOPE PROBES

Cat. No.	Bandwidth	Length	Attenuation	Input Capacitance	Net Price
OP-60A	60 MHz	1.5m (4')	× 1/× 10	55/16pF	\$35.25
OP-100	100 MHz	1.5m (4')	× 1/× 10	75/11pF	57.18
OP-150	150 MHz	1.5m (4')	× 1/× 10	75/11pF	76.26



TL-222

TL-305

TL-310

REPLACEMENT TEST LEADS

Cat. No.	Description	Net Price
TL-222	Banana plugs to test probe with detachable alligator clips 39"	\$11.00
TL-305	42" alligator clips to BNC plug RG-58	7.75
TL-310	36" seizer probes to BNC plug RG-58	10.98



380-200

ALLIGATOR CLIP LEADS

Set of 10 alligator clip leads, colours include 2 each of black, red, yellow, green, and white.

Cat. No.	Description	Net Price
380-100	12" leads—small 31mm insulated clips	\$4.52
380-200	12" leads—medium 34mm insulated clips	5.45
380-300	12" leads—large 44mm insulated clips	6.83



377-441 377-421
377-442 377-422



377-501
377-502

DUAL STACKING BANANA PLUGS

Cat. No.	Description	Net Price
377-421	Black plastic nickel contact—14 AWG max	\$3.00
377-422	Red plastic nickel contact—14 AWG max	3.00
377-441	Black plastic gold contact—14 AWG max	3.62
377-442	Red plastic gold contact—14 AWG max	3.62
377-501	Black plastic gold contact—8 AWG max	5.91
377-502	Red plastic gold contact—8 AWG max	5.91



378-120



378-130

BNC ADAPTERS

Cat. No.	Description	Net Price
378-120	BNC plug to 2 binding posts adapter	\$7.48
378-130	BNC jack to 2 binding posts adapter	6.88