

JOHNSON Components™



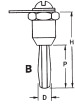
108-0750-001



108-0754-001



108-0753-001



STANDARD BANANA PLUGS

This group of standard banana plugs has accurately machined brass studs which extend the full length of the plugs, providing extra strength. Springs are nickel-silver-highly resistant to corrosion. Bodies and hardware .0001 nickel-plated.

Cat. No.	Dwg.	S	P	D	H	Thread	Net Price
108-0750-001	A	3/8"	17/32"	.175"	1 1/8"	6-32	\$3.05
108-0750-002	A	3/4"	17/32"	.175"	1 1/2"	6-32	3.39
108-0753-001	B	—	17/32"	.175"	1 5/16"	6-32	2.55

This banana plug is similar to the standard types listed above, except that it is designed for riveting. Springs are beryllium copper, cadmium-plated.

108-0754-001	C	1/32"	1 3/32"	.155"	1 3/16"	—	2.14
--------------	---	-------	---------	-------	---------	---	------



108-0740-001



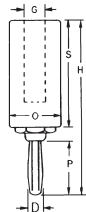
STANDARD BANANA JACKS

High quality, machined brass banana jack. Nickel-plated. Furnished complete with solder terminal and nut.

Cat. No.	F	D	S	H	Hole Dia.	Thread	Net Price
108-0740-001	3/8"	1/4"	17/32"	5/8"	.166"	1/4"-28	\$2.80
108-0740-102	3/8"	1/4"	1 3/32"	5/8"	1/16"	1/4"-32	3.84



108-0752-001



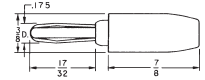
STANDARD INSULATED BANANA PLUGS

These standard insulated banana plugs are equipped with plastic handles, brass nickel-plated bodies, and nickel-silver springs. The 108-0752-001 has a black plastic handle-the 108-0752-002, red.

Cat. No.	S	P	D	H	G	O	Net Price
108-0752-001	1 3/8"	1 7/32"	.175"	2 1/8"	7/32"	7/16"	\$3.66
108-0752-002	1 3/8"	1 7/32"	.175"	2 1/8"	7/32"	7/16"	3.66



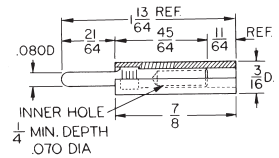
108-0300-001



SOLDERLESS BANANA PLUGS

Compact, high voltage insulated plug for a wide variety of applications. Designed for fast, solderless connection of up to 16 gauge stranded wire. Body and pin are constructed of one-piece nickel-plated brass with high grade nickel-silver springs. Sleeve is molded. Current rating: 15 amps.

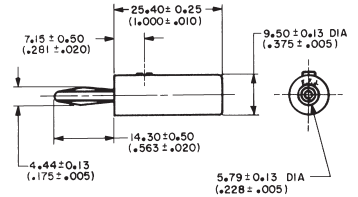
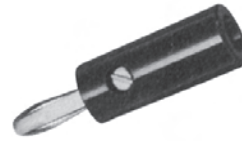
Cat. No.	Colour	Net Price
108-0301-001	White	\$2.36
108-0302-001	Red	2.36
108-0303-001	Black	2.36
108-0304-001	Green	2.36
108-0307-001	Yellow	2.36
108-0310-001	Blue	2.36



INSULATED SMALL HANDLE TIP PLUG

For standard tip jack, .080" dia. Brass body, nickel plated. Nylon insulated handle. Solder type connection. Current: 10 amps. Contact resistance: 0.010 ohms max.

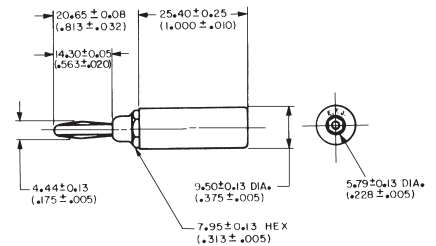
Cat. No.	Colour	Net Price
105-0771-001	White	\$2.03
105-0772-001	Red	2.03
105-0773-001	Black	2.03



SOLDERLESS BANANA PLUG WITH SIDE SET SCREW

Set screw provides dependable connection for low voltage applications. Quickly makes terminations with up to 16 gauge wire. Nickel silver spring with nickel plated brass body. Current rating: 15 amps. Breakdown voltage: 50 VDC. Contact resistance: 0.010 ohms max.

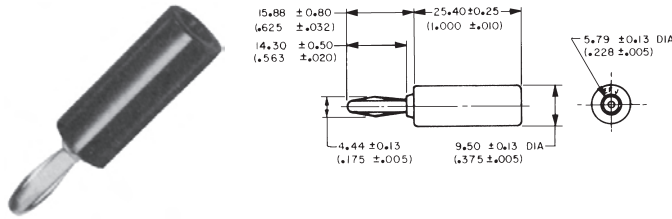
Cat. No.	Colour	Net Price
108-1702-101	Red	\$3.64
108-1703-101	Black	3.64



SOLDER STUD HEX BODY BANANA PLUG

Versatile plug offers two assembly methods. Solder wire to tin plated stud or make solderless connection by feeding wire through stud flaring strands and screw stud into body. Solder stud accepts up to 16 gauge wire. Nickel silver spring with nickel plated brass body. Current rating: 15 amps. Breakdown voltage: 5000 VDC. Contact resistance: 0.010 ohms max.

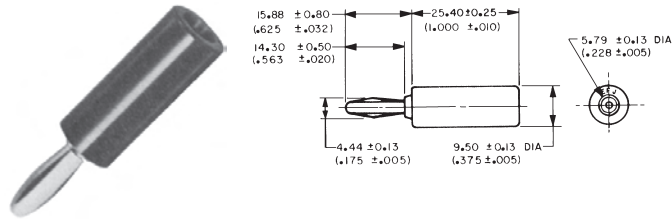
Cat. No.	Colour	Net Price
108-1762-101	Red	\$3.83
108-1763-101	Black	3.83



SOLDER STUD ROUND BODY BANANA PLUG

Versatile plug design offers two assembly methods. Solder wire to tin plated stud or make solderless connection by feeding wire through stud, flaring strands, and screwing stud into body. Solder stud accepts up to 16 gauge wire. Nickel silver spring with nickel plated brass body. Current rating: 15 amps. Breakdown voltage: 5000 VDC. Contact resistance: 0.010 ohms max.

Cat. No.	Colour	Net Price
108-1722-101	Red	\$4.58
108-1723-101	Black	4.58



SOLDERLESS ROUND BODY BANANA PLUG

Plug design gives dependable service with functional 1 inch handle. Wire passes through plug, wraps around neck of plug and locks in place by screwing handle on to body for solderless connection. Use up to 16 gauge wire with plug. Nickel silver spring with nickel plated brass body. Current rating: 15 amps. Breakdown voltage: 5000 VDC. Contact resistance: 0.010 ohms max.

Cat. No.	Colour	Net Price
108-1722-103	Red	\$3.48
108-1723-103	Black	3.48

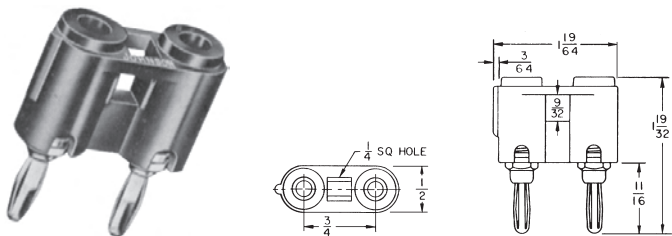


108-1000-001

MINIATURE BANANA PLUGS

Extremely small insulated banana plugs with precision machined phosphor bronze body, nickel-plated. One-piece springs are beryllium copper, nickel plated, .120" dia., Polyamide sleeve. Current rating: 15 amps.

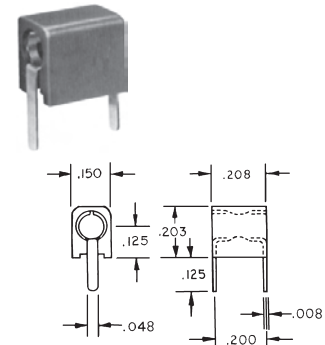
Cat. No.	Colour	Net Price
108-1002-001	Red	\$3.48
108-1003-001	Black	3.48



DUAL BANANA PLUGS

Extremely versatile dual banana plug available for either solderless or set screw connection. Molded body incorporates polarity indication and strain relief hole for wire leads. Springs are high quality nickel-silver—bodies are nickel plated. Accurately machined brass studs extend full length of pins for extra strength. Voltage breakdown: 10,000 VDC. Capacity plug to plug: 1.3 pf. Current rating: 15 amps.

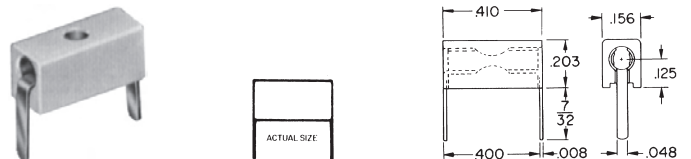
Cat. No.	Colour	Net Price
WITH SET SCREWS		
108-0252-001	Red	\$12.42
108-0253-001	Black	12.42



MINIATURE HORIZONTAL TEST JACK

Compact size fits into today's high density circuit board designs. Probe access from both ends. Contact: Copper aluminum alloy. Finish: Nickel silver. Body: Nylon per MIL-M-20693A. Current: rating: 5 amps. Breakdown voltage: 3000 VDC min. Contact resistance: 0.010 ohms max. Adjacent jack C: 1pF maximum at 1 MHz. Accepts 0.080" dia. tip plug in either end.

Cat. No.	Colour	Net Price
105-1102-001	Red	\$.96
105-1103-001	Black	.96



HORIZONTAL TEST JACK

Unique design accepts .080" dia. tip plug in either end, or from top or bottom. Available in silver-plated and iridized beryllium copper formed contacts or gold-plated beryllium contacts. Two common terminals. Current rating 5 amps, breakdown voltage 3000 volts D.C., nylon insulated.

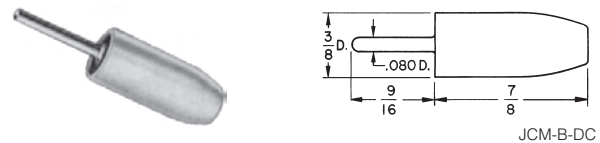
HORIZONTAL JACK

Cat. No.	Colour	Net Price
----------	--------	-----------

SILVER-PLATED CONTACTS

105-0751-001	White	\$.86
105-0752-001	Red	.86
105-0753-001	Black	.86
105-0754-001	Green	.86
105-0757-001	Yellow	.86
105-0760-001	Blue	.86

Mounts in two .54 ± .002" holes on .400 ± .005" centres.

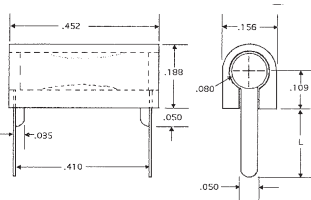


JCM-B-DC

SOLDERLESS TIP PLUG

Completely insulated, molded sleeve. Recessed metal head prevents exposure of metal surfaces when engaged in any standard tip jack. All metal parts are nickel-plated brass. Designed for solderless connection of up to 16 gauge stranded wire. Fits all standard tip jacks. Current rating: 10 amps.

Cat. No.	Colour	Net Price
105-0301-001	White	\$1.75
105-0302-001	Red	1.75
105-0303-001	Black	1.75
105-0304-001	Green	1.75
105-0307-001	Yellow	.99



PRINTED CIRCUIT TEST JACKS

Double entry design; probe inserts from either end of jack. Closed entry construction will not accept probes larger than .084", will contact down to 074". Closed bottom construction keeps jack from fouling with solder or flux. Locking ears hold jack firmly in board until soldered. Precise dimensions allow for automated assembly on boards. **BODY:** Molded mylon per MIL-P-20693. **SPRING:** Beryllium copper. **MOUNTING:** Mounts in .052" holes. **DATA:** Insertion force: 30 oz. max. Withdraw force: 8 oz. min. with .080" (±.100") probe. **RATING:** Operating voltage 1,500 volts, 60 cps RMS, sea level. 350 volts, 60 cps RMS at 50,000 feet. 5 amps aC max. current rating. Contact resistance 20 millivolt drop max. at special current at 25°C.

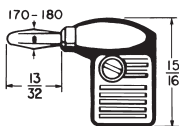
Cat. No.	Colour	Length (L)	Plating	Board Thickness	Net Price
COMMERCIAL TYPES					
430-101	White	.203"	Gold	3/16"	\$1.43
430-102	Red	.203"	Gold	3/16"	1.39
430-103	Black	.203"	Gold	3/16"	1.39
430-104	Green	.203"	Gold	3/16"	1.43
430-106	Orange	.203"	Gold	3/16"	1.39



INTERCHANGEABLE TIP TEST LEAD KIT

PROD HANDLE: Molded ABS. **PROD TIP:** Brass, nickel plated. **BANANA PLUG:** Molded polycarbonate handle. Beryllium copper spring, nickel plated. **WIRE:** #18 PVC insulated, extra-flexible, kink resistant. Nominal length 48", supplied as a pair, one Red and one Black. **DESCR.:** Banana plug test lead kit, with additional parts for universal attachment to various instrument input connectors. Adapters plug on Banana Plug end.

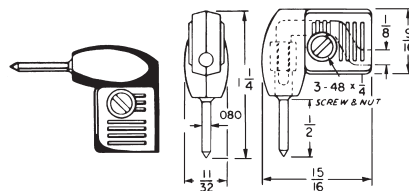
Cat. No.	Description	Net Price
610P	Tip Prods	\$32.00



METER BANANA PLUG

HANDLE: Molded Phenolic plastic, Red and Black. **PLUG:** Brass, nickel plated. **SPRING:** Four-leaved phosphor bronze, nickel plated. **RATING:** 10 Amps AC for 10°C Temp. rise, continuous duty. **DESCR.:** Molded in two halves for easy assembly with screw and nut. Fits standard banana jacks.

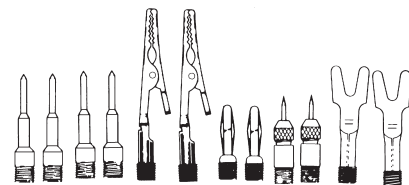
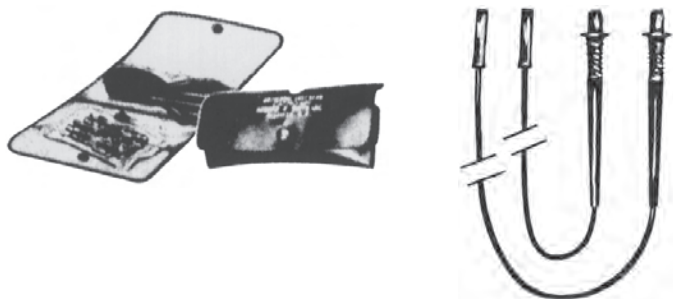
Cat. No.	Colour	Net Price
255-102	Red	\$3.65
255-103	Black	3.65



METER TIP PLUG

HANDLE: Molded Phenolic plastic. Red and Black. **PLUG:** Brass, nickel plated. **RATING:** 12 Amps AC for 10°C Temp. rise, continuous duty. **DESCR.:** Molded in two halves for easy assembly with screw and nut. Fits standard phone tip jacks.

Cat. No.	Colour	Net Price
235-102	Red	\$2.22
235-103	Black	2.22



"UNIVERSAL" TEST LEAD KIT COMPLETELY INTERCHANGEABLE

DESCR.: An indispensable kit for every technician, laboratory, production control station and repair/service facility. A pair of ribbed safety-grip test prod, permanently fixed on one end. Meter ends and prods have modular connectors into which fit a complete assortment of instrument input accessories. One pair of leads and accessories are supplied in a handy folding vinyl pouch. **WIRE:** #18 PVC insulated; extra-flexible kink resistant. Nominal length 48", one Red and one Black.

Cat. No.	Net Price
699	\$40.52



STANDARD ALLIGATOR CLIP BOTH ENDS

CLIPS: Steel, Cadmium plated (No. 300). **BOOTS:** Vinyl plastic. Boot colors match wire. **RATING:** 5 Amps AC for 10°C Temp. rise, continuous duty. **WIRE:** 10 KV PVC flexible wire, 65 strands #36 copper, #18 AWG, insulated to an O.D. of .140". Available in Red or Black.

Cat. No.	Length	Net Price
RED		
1596-12-102	12"	\$4.99
1596-24-102	24"	5.98
1596-36-102	36"	6.98
1596-48-102	48"	7.05
1596-60-102	60"	7.55
BLACK		
1596-12-103	12"	4.99
1596-24-103	24"	5.98
1596-36-103	36"	6.98
1596-48-103	48"	7.05
1596-60-103	60"	7.55