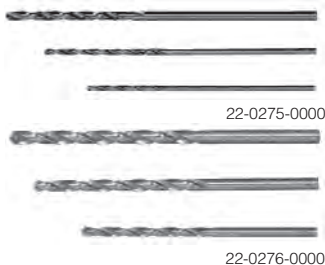


PLUG-IN IC PROTOTYPE BOARD

IC's plug directly into board. 0.1" spacing accepts 14 x 14 pin or 16 pin IC's, up to 20 pin IC's. Silver plated lands with 24 way card edge connector plug on one end. Made of tough phenolic. 0.1" centers x 2 3/8" wide x 4" long x 1/16" thick.

Cat. No.	Net Price
22-0500-0000	\$3.17



DRILL BIT SETS

For drilling component lead wire holes in phenolic and glass epoxy PC boards. Made of high speed tool steel for long life.

Cat. No.	Set Contains	Net Price
22-0275-0000	No. 66 bit .0330" dia., no. 60 bit .0440" dia., no. 1/16 bit .0625" dia.	\$6.20
22-0276-0000	No. 31 bit .1200" dia., no. 27 bit .1440" dia., no. 3/32 bit .0928" dia.	5.12



ETCH RESIST INK PENS

Black felt tip pen for making resist circuits directly on PC boards. Dries instantly for neat, easy application. Can be removed with PC board stripping solution (22-0240-0000).

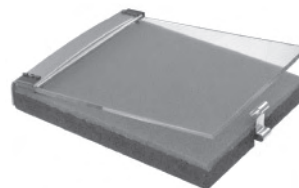
Cat. No.	Description	Net Price
22-0220-0000	Std. size, 1/32" wide	\$3.24
22-0222-0000	Fine line, 1/64" wide	3.45



PURE COPPER CIRCUIT TAPE

6 foot roll of self adhesive pure copper tape for quick repairs or circuit modification. Adheres readily to PC boards chassis and similar surfaces, solders readily. Flexible enough to be used around corners. Extremely low resistance (.020" thick). Supplied on 1" I.D. core.

Cat. No.	Dimensions	Net Price
22-0507-0000	1/8" wide	\$3.86
22-0509-0000	1/4" wide	4.28



EXPOSING FRAMES

Contact frames for use with Exposing Stand. Assures perfect transfer of circuit to sensitized PC board. Special plate glass is hinged for easy use. Foam cushion assures tight contact.

Cat. No.	For Board Size	Net Price
22-0280-0000	4 1/2" x 6 1/2"	\$37.48
22-0393-0000	10" x 12"	52.10



PROFESSIONAL PC BOARD POWER ETCHING SYSTEM KIT

A semi-automatic etching device for use in labs, schools, prototype shops and for limited PC board production. Reduces etching time to minutes. Air pump agitates etching solution for fast, very even etches. Handles up to two 8" x 10" PC boards at a time, either single or double sided. Tank comes with a tip proof wire stand that can remain portable or attached to the bench with screws. Boards fit into a submersible rack with handles that keep hands away from etchant as well as separating the PC boards. Lid prevents splashes, reduces evaporation, and can be turned upside down and used as an auxiliary tray. Kit contains: 1 Etching tank and reservoir lid (12"H x 2 1/2" W x 10 1/2" L) molded polyethylene-ABS PC board holder. 1 Etch-O-Matic power agitating pump, 120 VAC operation, 1 Permanent or portable tip free base. 1 PC board holder and handle. 10 feet of supply hose.

Cat. No.	Description	Net Price
22-0394-0000	Etching System	\$99.03
22-0392-0000	Thermostat Heater	21.11



ETCHING SOLUTION HEATER

Fits in tank and heats solution up to 38°C (100°F). Used to further reduce etching time. Built in adjustable thermostat controls temperature continuously to 100°F. 120V AC/100 W Max.

Cat. No.	Net Price
22-0392-0000	\$21.11



PRECISION KNIFE SET

A kit of three knife handles with commonly used blades plus an assortment of ten extra blades. This kit is useful in PC artwork, lab use for cutting cambric, etc. Supplied in wooden case with magnetic spare-blade holder in lid. 16 pcs. total.

Cat. No.	Net Price
12-0007-0000	\$23.31



FINE LINE SOLDER

Specially designed for today's PC needs. Thin, neat—low melting point 60/40 rosin core type, .032" diameter. Convenient, clear plastic, self-feed dispenser contains 12 feet of solder.

Cat. No.	Net Price
00-9132-0000	\$2.38



DOUBLE HAND HOLDER

Six ball joints permit movement to the exact angle required for hands-free operation. Tightened (locked in place) by thumb screw. Alligator clips, adjustable to any position, holds small shapes securely. Heavy base prevents tipping. May be used in vise or clamped to work-bench.

Cat. No.	Net Price
12-0051-0000	\$9.06



DEVELOPING AND ETCHING TRAYS

Etching trays to accommodate larger size PC boards. For use with positive developer or with etching solution. Not for negative developer. 22-0284-0000: Two plastic trays (5-1/4" x 7-1/4" I.D.) for positive method developing and for etching. One aluminum tray for rinsing (4-1/4" x 6-3/4" I.D.).

Cat. No.	Description	Net Price
22-0284-0000	Set of Three Trays	\$11.47
22-0285-0000	8" x 10" (inside), Plastic	8.96
22-0286-0000	11" x 14" (inside), Plastic	12.43



MINIATURE VACUUM VISE

Attaches instantly to smooth, nonporous surfaces. Side lever controls powerful suction cup base. Completely portable but can be permanently mounted—mounting holes provided on base. 1-1/2" jaws open to 1-3/4". Ideal for quick, changeable setups involving small precision parts and microelectronic accessories. 2-5/8" H x 2-1/4" W x 2-1/4" D. Durable molded plastic.

Cat. No.	Net Price
41-0616-0000	\$35.54



ACID BRUSHES

Brushes for cleaning with solvents, applying coatings and a host of other uses. These brushes are economical enough to use as throw-aways in many applications. Or may be used repeatedly with cleaners such as Freon TF, Chlorothene, Flux Solv, etc. Handles are of tin plated steel and bristles a medium-fine horse hair. Also fine for dusting keyboards, optics, etc. All 6" long, width refers to width at base of bristles.

Cat. No.	Description	Net Price
10-0251-0000	pkg. of 4 No. 1 acid brush 3/8"	\$1.98
10-0252-0000	pkg. of 4 No. 2 acid brush 1/16"	2.19
10-0253-0000	pkg. of 3 No. 3 acid brush 1/2"	1.98
10-0255-0000	pkg. of 2 No. 5 acid brush 3/4"	2.19
10-0259-0000	Assortment, 7 pcs.	4.53