

Cat. No.	Panel Height		No. of Slots	Net Price
	Inches	Units		
GREY/BEIGE SMOOTH FINISH				
PBFS19001CG2	1.75	1	4	\$14.96
PBFS19003CG2	3.50	2	4	16.62
PBFS19005CG2	5.25	3	4	18.00
PBFS19007CG2	7.00	4	4	23.98
PBFS19008CG2	8.75	5	4	27.02
PBFS19010CG2	10.50	6	8	29.40
PBFS19012CG2	12.25	7	8	30.84
PBFS19014CG2	14.00	8	8	35.58
PBFS19015CG2	15.75	9	8	37.36
PBFS19017CG2	17.50	10	8	42.91
PBFS19019CG2	19.25	11	8	45.69
PBFS19021CG2	21.00	12	8	47.44
PBFS19022CG2	22.75	13	8	53.13
PBFS19024CG2	24.50	14	10	54.58
PBFS19026CG2	26.25	15	10	55.78
PBFS19028CG2	28.00	16	12	59.29
PBFS19029CG2	29.75	17	12	60.51
PBFS19031CG2	31.50	18	12	61.69

GREY—ASA 61 SMOOTH FINISH				
Cat. No.	Inches	Units	No. of Slots	Net Price
PBFS19001GY2	1.75	1	4	14.96
PBFS19003GY2	3.50	2	4	16.62
PBFS19005GY2	5.25	3	4	18.00
PBFS19007GY2	7.00	4	4	23.98
PBFS19008GY2	8.75	5	4	27.02
PBFS19010GY2	10.50	6	8	29.40
PBFS19012GY2	12.25	7	8	30.84
PBFS19014GY2	14.00	8	8	35.58
PBFS19015GY2	15.75	9	8	37.36
PBFS19017GY2	17.50	10	8	42.91
PBFS19019GY2	19.25	11	8	45.69
PBFS19021GY2	21.00	12	8	47.44
PBFS19022GY2	22.75	13	8	53.13
PBFS19024GY2	24.50	14	10	54.58
PBFS19026GY2	26.25	15	10	55.78
PBFS19028GY2	28.00	16	12	59.29
PBFS19029GY2	29.75	17	12	60.51
PBFS19031GY2	31.50	18	12	61.69

BLACK SMOOTH FINISH				
Cat. No.	Inches	Units	No. of Slots	Net Price
PBFS19001BK2	1.75	1	4	14.96
PBFS19003BK2	3.50	2	4	16.62
PBFS19005BK2	5.25	3	4	18.00
PBFS19007BK2	7.00	4	4	23.98
PBFS19008BK2	8.75	5	4	27.02
PBFS19010BK2	10.50	6	8	29.40
PBFS19012BK2	12.25	7	8	30.84
PBFS19014BK2	14.00	8	8	35.58
PBFS19015BK2	15.75	9	8	37.36
PBFS19017BK2	17.50	10	8	42.91
PBFS19019BK2	19.25	11	8	45.69
PBFS19021BK2	21.00	12	8	47.44
PBFS19022BK2	22.75	13	8	53.13
PBFS19024BK2	24.50	14	10	54.58
PBFS19026BK2	26.25	15	10	55.78
PBFS19028BK2	28.00	16	12	59.29
PBFS19029BK2	29.75	17	12	60.51
PBFS19031BK2	31.50	18	12	61.69

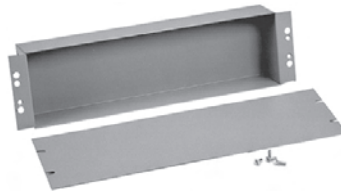


HINGED DOOR PANEL

- Formed 14 gauge steel construction.
- Includes lock hasp and 2 keys.
- Door opening is 16.2" wide.
- Standard 19" rack mount.
- Requires mounting hardware.



Cat. No.	Panel Height		Units	Net Price
	Inches	Units		
GREY/BEIGE—SMOOTH FINISH				
PHPF19005CG2	5.25	3		\$48.98
PHPF19008CG2	8.75	5		55.62
PHPF19012CG2	12.25	7		63.44
BLACK—SMOOTH FINISH				
PHPF19005BK2	5.25	3		48.98
PHPF19008BK2	8.75	5		55.62
PHPF19012BK2	12.25	7		63.44



STEEL CHASSIS WITH PANEL

- Formed 16 gauge steel construction.
- Chassis measures 17" wide and 3" deep.
- Special punching on chassis allows for both the chassis and panel to be mounted together.
- Finished in beige (CG2) or grey (GY2) powder paint.
- Mounting hardware not included, please order separately.
- Standard 19" rack mount.



Cat. No.	Panel Height		Chassis Height In.	Net Price
	Inches	Units		
5-350DCG2	3.50	2	3.1	\$41.10
5-525DCG2	5.25	3	4.9	33.29
GREY				
5-350DGY2	3.50	2	3.1	55.13
5-525DGY2	5.25	3	4.9	59.27



ALUMINUM CHASSIS

- 0.06" thick aluminum construction.
- Chassis measures 17" wide and 5.25" deep.
- Finish is natural aluminum.
- Mounting hardware not included, please order separately.
- Standard 19" rack mount.



Cat. No.	Panel Height		Units	Net Price
	Inches	Units		
7-350D	3.50	2		\$32.39
7-525D	5.25	3		34.64

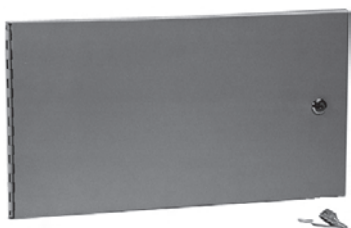


LOUVERED PANEL

- Formed 16 gauge steel construction.
- Designed with 3 columns of four inch wide louvers.
- Louvers face out.
- Mounting hardware not included, please order separately.
- Finished in beige (CG2) or Black (BK2) powder paint.
- Standard 19" rack mount.
- Includes a .50" fold top and bottom for added strength.



Cat. No.	Panel Height		Units	Net Price
	Inches	Units		
GREY/BEIGE—SMOOTH FINISH				
PVLL19005CG2	5.25	3		\$35.36
PVLL19007CG2	7.00	4		37.96
PVLL19008CG2	8.75	5		42.80
PVLL19010CG2	10.50	6		45.24
PVLL19012CG2	12.25	7		45.47
BLACK—SMOOTH FINISH				
PVLL19005BK2	5.25	3		36.00
PVLL19007BK2	7.00	4		37.96
PVLL19008BK2	8.75	5		42.80
PVLL19010BK2	10.50	6		45.24
PVLL19012BK2	12.25	7		45.47

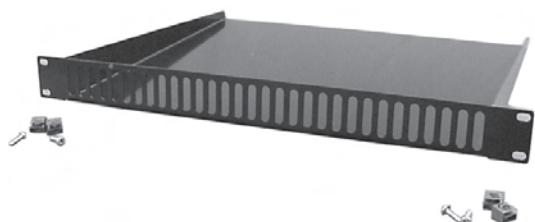


PANEL RAIL DOOR

- Hinges bolt directly to the panel rail.
- Includes lock, hasp, and 2 keys.
- When door is open, space between the panel rails is completely accessible.
- Overall door depth (0.63") matches depth of **raised** panels.
- Mounting hardware not included.
- Finished in beige (CG2) and black (CG2) powder paint.
- Standard 19" rack mount.
- Formed 14 gauge steel construction, folded on all 4 sides.

Cat. No.	Panel Height		Net Price
	Inches	Units	
GREY/BEIGE—SMOOTH FINISH			
RSDP19010CG2	10.50	6	\$125.07
RSDP19012CG2	12.25	7	127.03
RSDP19014CG2	14.00	8	129.10
RSDP19017CG2	17.50	10	132.91
RSDP19022CG2	22.75	13	138.60
RSDP19028CG2	28.00	16	144.22

Cat. No.	Panel Height		Net Price
	Inches	Units	
BLACK—SMOOTH FINISH			
RSDP19010BK2	10.50	6	125.07
RSDP19012BK2	12.25	7	127.03
RSDP19014BK2	14.00	8	129.10
RSDP19017BK2	17.50	10	132.91
RSDP19022BK2	22.75	13	138.60
RSDP19028BK2	28.00	16	144.22



BAFFLE PANEL

- Rear sloping aluminum baffle for directing air flow.
- Finished in rugged, heat absorbing black powder paint finish.
- Extends approximately 14" behind mounting rails.
- Mounting hardware not included, please order separately.
- Standard 19" rack mount.
- 16 gauge steel construction.

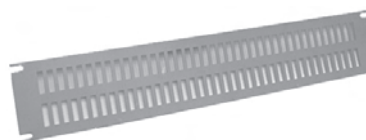
Cat. No.	Panel Height		Net Price
	Inches	Units	
PVBB19001BK2	1.75	1	\$56.80



CABLE ENTRY PANEL

- Formed 16 gauge steel construction.
- Allows for easy entry of cables on front face of rack.
- Cutout opening has protected edge.
- Finished in textured powder paint.
- Mounting hardware not included, please order separately.
- Standard 19" rack mount.

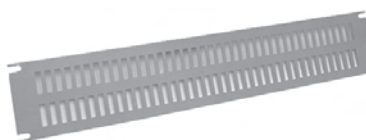
Cat. No.	Colour	Panel Height		Cutout Opening	Net Price
		Inches	Units		
DNCE19CG1	Beige	3.50	2	15x2	\$42.31
DNCE19BK1	Black	3.50	2	15x2	42.31



STEEL SLOT PANEL

- 14 gauge steel construction.
- Slots are 0.25" x 1.0".
- 1.75" panels have one row of slots, 3.50" have 2 rows.
- Mounting hardware not included, please order separately.
- Finished in beige (CG2) and black (BK2) powder paint.
- Standard 19" rack mount.

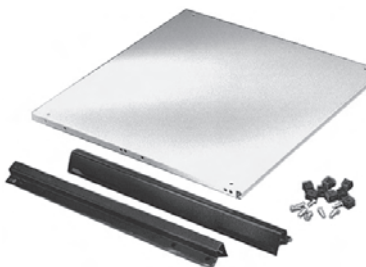
Cat. No.	Panel Height		Open Space (cubic inch)	Net Price
	Inches	Units		
GREY/BEIGE—SMOOTH FINISH				
PVSS19001CG2	1.75	1	9.7	\$17.84
PVSS19003CG2	3.50	2	19.4	27.11
BLACK—SMOOTH FINISH				
PVSS19001BK2	1.75	1	9.7	17.84
PVSS19003BK2	3.50	2	19.4	27.11



ALUMINUM SLOT PANEL

- Constructed from 0.13" aluminum.
- Slots are 0.25" x 1.0".
- 1.75" panels have one row of slots, 3.50" have 2 rows.
- Standard 19" rack mount.
- Finished in beige (CG2) and black (BK2) powder paint.
- Mounting hardware not included, please order separately.

Cat. No.	Panel Height		Open Space (Cubic Inch)	Net Price
	Inches	Units		
GREY/BEIGE—SMOOTH FINISH				
PVSA19001CG2	1.75	1	9.7	\$28.58
PVSA19003CG2	3.50	2	19.4	34.51
BLACK—SMOOTH FINISH				
PVSA19001BK2	1.75	1	9.7	28.58
PVSA19003BK2	3.50	2	19.4	34.51



FIXED CHASSIS/SHELF

- This shelf can be used as a permanently mounted support shelf or as a pull-out chassis.
- Accepts optional slides for pull-out application.
- Material is 18 gauge (shelf) and 14 gauge (brackets).
- Shelf is 16.8" wide x 0.5" high.
- Finished in white (WH2) powder paint.
- Weight load tested to 85 lbs.

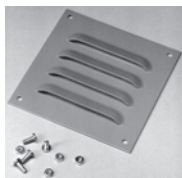
Cat. No.	Panel Width	Shelf Depth	Bracket Depth	Net Price
RASC1912WH2	19	11.9	13.2	\$77.00
RASC1916WH2	19	15.9	14.9	86.49
RASC1922WH2	19	21.9	20.9	98.62



LITERATURE POCKET KIT

- For use as additional or replacement literature pockets.
- Kit includes pocket, high strength, two-sided adhesive tap and surface preparation swab.
- Black plastic.

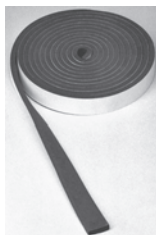
Cat. No.	H	W	Net Price
PKT66	6	6	\$16.04
PKT99	6	9	16.38
PKT1212	12	12	23.45



LOUVERED VENTILATING PLATE

- Provides ventilation in enclosures where required.
- Easily installed in the field by cutting a square hole of the proper size and bolting the ventilator in place.
- Finished in grey powder paint.

Cat. No.	Plate Size		No. of Louvers	No. of Rows	Louvers Length	Opening Area (in ²)	Net Price
	H	W					
1481L44	5.62	5.5	4	1	4	3	\$24.80
1481L66	7.87	7.5	14	2	2	2.8	29.56
1481L88	10.56	10.5	18	2	4	14	36.27



NEOPRENE GASKET

- Self adhesive gasket.
- Cellular type used on most NEMA Type 12 wallmount enclosures.
- Microcell type used on most NEMA Type 4 and 4X freestanding and Series 200 enclosures.

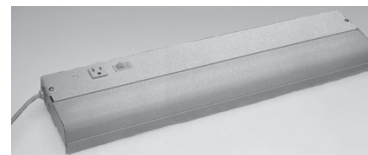
Cat. No.	Description	Size	Net Price
1481DJ10	Cellular neoprene	3/16" x 3/4" x 10'	\$15.65
1481DJN410	Microcell urethane	1/4" x 3/4" x 10'	15.47



PULL RING CATCH

- Neat semi-flushed pull ring catch.
- Chrome plated die cast.
- For use on flat plate cabinet doors eg. 1420 enclosures (not pre-punched).

Cat. No.	Ship Wt. Lbs.	Net Price
1427EK	0.25	\$32.80



LIGHT KIT

- Features a manually operated switch, 115V convenience outlet, durable plastic lens, and 6 foot power cord (without plug).
- Uses standard 18" or 48" bulb (not included). Type T12.
- Finished in white (WH2).
- UL and CSA component recognized.
- Installs with 1/4-20 bolts placed through holes drilled in top of enclosure. Screws and sealing washers provided. Hardware also included to mount into lighting "C" channels featured in several series of large enclosures (see individual series specifications.)

OPTIONAL MAGNET MOUNT KIT

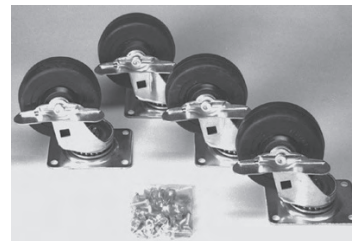
- Allows for solid mounting without drilling and the ability to move light within cabinet easily.
- Can only be used on mild steel version.

OPTIONAL REMOTE DOOR SWITCH

- Permits convenient door activated on-off function. Mounts to flange of any Hammond enclosure.

Cat. No.	Description	Net Price
FLK18 ¹	18" Fluorescent Light Kit	\$162.98
FLK48 ¹	48" Fluorescent Light Kit	206.25
FLK18MM	Magnet Mount Kit for 18" Light	56.60
FLK48MM	Magnet Mount Kit for 48" Light	94.05
FLKDS	Remote Door Switch	28.29

¹Fluorescent light tube not included.



CASTERS

- Set of four.
- 800 lb. load capacity per set.
- 4" swivel casters with brakes.
- Features zinc plated ball bearing pivot, composite wheels.

Cat. No.	Net Price
1425D	\$118.73



TOUCH-UP PAINT

- For use in matching standard Hammond colours.
- Provided in 12 oz. spray cans.

Cat. No.	Description	Net Price
1413LRS	ASA 61 Grey	\$22.71
1413NS	White	22.71
1413BKLGS	Black—Low Gloss	21.36
1413BKS	Black	22.71
1413CGRALS	Beige RAL7032	22.71
1413GFS	Gulf Blue	22.71