



THE CLEAR CHOICE



FLAT LINE CORD

APPLICATIONS: For indoor use in connecting telephone unit to wall outlets, handset, answering machines, etc. Terminate with standard modular plugs.

JACKET: PVC. **CONDUCTOR:** 26 AWG stranded copper. **AGENCY LISTING:** UL listed.

Cat. No.	Length	No. of Conductor	Colour	Pick-Up	Net Price
30-9990-0000	500 ft.	4	Silver	Shrink bag	\$28.30
30-9927-0000	50 ft.	4	Silver	Hank	3.53
30-9928-0000	100 ft.	4	Silver	Hank	6.89
30-9920-0000	50 ft.	4	Ivory	Hank	3.34
30-9922-0000	100 ft.	4	Ivory	Hank	6.70
30-9992-0000	500 ft.	4	Ivory	Shrink bag	26.31
30-9929-0000	1000 ft.	4	Silver	Spool	52.21
30-9963-0000	1000 ft.	4	Ivory	Spool	50.33
30-9938-0000	100 ft.	6	Silver	Hank	8.27
30-9933-0000	100 ft.	6	Ivory	Hank	8.10



TELEPHONE STATION WIRE

APPLICATIONS: Economical, single line straight lay telephone hook-ups.

JACKET: PVC. **JACKET COLOUR:** Beige. **CONDUCTOR:** Solid copper.

Cat. No.	Length	No. of Conductors	Pick-Up	Net Price
22 AWG				
30-9985-0000	500 ft.	4	Shrink bag	\$27.77
24 AWG				
30-9998-0000	1000 ft.	4	Shrink bag	43.02
30-9999-0000	1000 ft.	6	Shrink bag	60.56



TELEPHONE NOISE FILTER

EMI/RFI filter for the telephone. Reduces static noise on corded telephones.

Cat. No.	Net Price
30-9653-0000	\$8.33



TELEPHONE BUTT SPLICE

Model 30-8931-0000—Connects 2 or 3 wires 19-26 Awg. for general splicing UR connector 3 ports.

Cat. No.	Package Qty.	Net Price
30-8931-0000	10	\$3.66



TELEPHONE TAP CONNECTOR

For tapping into existing wires without interruption UB connector 22-26 Awg.

Cat. No.	Package Qty.	Net Price
30-8933-0000	10	\$3.11



HANDSET MODULAR PLUGS

Use with flat line cord or coiled cord for making replacement cables or extension cords. Use modular handset crimp tool GC 43-0005-0000. Package of 100 4-conductor. RJ-11.

Cat. No.	Net Price
30-9912-0100	\$6.36



FLUSH WALL JACK

Modular flush wall jack assembly allows flush-mounted connection of plug-ended modular line cords. Ideal for initial installation or conversion from existing wall receptacles. UL listed, CSA approved.

Cat. No.	Description	Net Price
30-8747-00BU	4-conductor ivory	\$1.13
30-8749-00BU	4-conductor white	1.20
30-8769-00BU	6-conductor white	1.53
30-8767-00BU	6-conductor ivory	1.44
30-8789-00BU	8-conductor white	2.20
30-8787-00BU	8-conductor ivory	2.07



DUAL FLUSH JACK

Can be flushed mounted in wall to eliminate external wires. Two modular jacks permit use of two telephones at same location or one telephone and answering machine or other related equipment. Two solderless jacks can be connected independently or in series, utilizing one or two lines. UL listed, CSA approved.

Cat. No.	Description	Net Price
30-8447-00BU	4-conductor ivory	\$1.52
30-8449-00BU	4-conductor white	1.52
30-8667-00BU	6-conductor ivory	2.28
30-8669-00BU	6-conductor white	2.28
30-8807-00BU	8-conductor ivory	2.49
30-8809-00BU	8-conductor white	2.49



MODULAR SURFACE JACK

Modular Surface Jack mounts to baseboard or wall. Screw terminals for easy installation. UL listed, CSA approved.

Cat. No.	Description	Net Price
30-8607-00BU	4-conductor ivory	\$1.02
30-8609-00BU	4-conductor white	1.02
30-8627-00BU	6-conductor ivory	1.44
30-8629-00BU	6-conductor white	1.44
30-8687-00BU	8-conductor ivory	1.86
30-8689-00BU	8-conductor white	1.86



5-OUTLET MODULAR JUNCTION BOX WITH CORD

Permits up to five telephone related devices to be used from single modular jack. 6 ft. Ivory.

Cat. No.	Net Price
30-9802-0000	\$7.87



MODULAR "T" ADAPTER

"T" adapter enables two modular plugs to be used in a single modular jack.

Cat. No.	Description	Net Price
30-9654-0000	4-conductor ivory	\$1.98
30-9647-0000	6-conductor ivory	2.30
30-9649-0000	8-conductor ivory	4.16



DB9 (M)



DB9 (F)

DB-9 CABLE ASSEMBLIES

DB-9 connectors. Fully molded assemblies. All nine lines are wired straight through. Fully shielded with both Mylar foil over-layer plus 100% braid. PVC insulation, pure copper stranded wire. Gold plated contacts. Male to female 5 ft.

Cat. No.	Net Price
45-0314-0000	\$4.91



DB25 (F)



DB25 (M)

RS-232 DB-25 LINE CABLES

All 25 Lines wired straight through. Standard 25-pin (DB-25) subminiature connectors each end. Shielded 100% (Copper Braid over Mylar foil) precious metal contacts. PVC insulation throughout. Molded ends. Fully shielded.

Cat. No.	Description	Net Price
45-0379-0000	Male to Female 5 ft.	\$4.16
45-0374-0000	Male to Female 10 ft.	5.22
45-0375-0000	Male to Female 25 ft.	9.79
45-4363-0000	Male to Male 5 ft.	12.43
45-4364-0000	Male to Male 10 ft.	20.88



DB25 (M)



CEN36 (M)

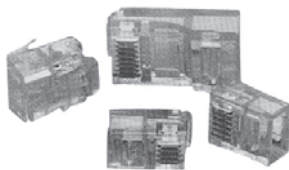


90° CEN36 (M)

STANDARD PARALLEL PRINTER CABLES

All cables fully wired with 25 conductors. All high quality computer cables have a 5 year warranty.

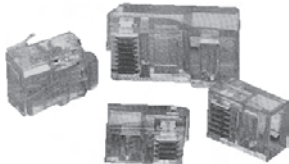
Cat. No.	Description	Net Price
45-0201-0000	Parallel printer cables DB25(M)/CEN36(M) 6'	\$4.49
45-0202-0000	Parallel printer cables DB25(M)/CEN36(M) 2'	4.16
45-0204-0000	Parallel printer cables DB25(M)/CEN36(M) 10'	5.22
45-0210-0000	90° Parallel printer cables DB25(M)/90° CEN36(M) 6'	6.27



MODULAR TELEPHONE PLUGS

Modular telephone plugs with 15µ" gold plated contacts.

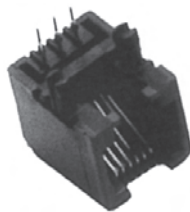
Cat. No.	Description	Net Price Per 100
12-253-0	4P/4C	\$8.33
12-254-0	6P/4C	8.67
12-256-0	6P/6C	10.00
12-258-0	8P/8C	17.50



MODULAR TELEPHONE PLUGS (FOR ROUND CABLE)

Modular telephone plugs for round jacket cable with 15µ" gold plated contacts. R types are for stranded wire and S type is for solid wire.

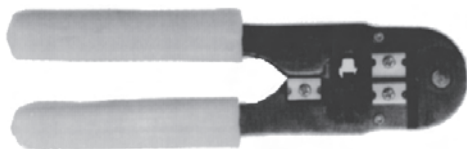
Cat. No.	Description	Wire Type	Net Price Per 100
12-254R-0	6P/4C	Stranded	\$8.64
12-256R-0	6P/6C	Stranded	10.00
12-258R-0	8P/8C	Stranded	20.00
12-258S-0	8P/8C	Solid	32.92



PC MOUNT MODULAR JACKS

Printed circuit mount modular jacks. 15µ" gold plating.

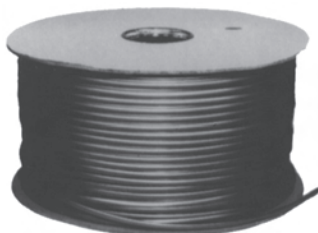
Cat. No.	Description	Net Price
12-264-0	6P/4C	\$.75
12-266-0	6P/6C	.75
12-288-0	8P/8C	1.12



DELUXE MODULAR CRIMP TOOL

Deluxe crimp tool cuts, strips and crimps modular plugs. Replaceable cutting blades: HT20961 for 12-306-1 & HT2101 for 12-308-1.

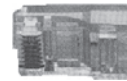
Cat. No.	Description	Net Price
12-306-1	6P/4C & 6P/6C	\$19.58
12-308-1	8P/8C	17.92



MODULAR TELEPHONE CABLE

23 AWG stranded conductor modular telephone cable. 1000' spools available in silver-satin or beige jacket colour.

Cat. No.	Description	Net Price
12-402-0	4-Conductor 100'	\$7.08
12-403-0 Beige	4-Conductor 1000'	64.67
12-403-0 Silver	4-Conductor 1000'	64.67
12-603-0 Beige	6-Conductor 1000'	98.75
12-603-0 Silver	6-Conductor 1000'	98.75
12-805-0 Silver	8-Conductor 1000'	130.00



CATEGORY 5 PLUGS

For round jacket/solid conductor cable.

Cat. No.	Description	Net Price Per 100
13-101-0	30µ" Gold	\$49.17
13-102-0	50µ" Gold	50.58



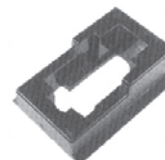
CATEGORY 5E KEYSTONE JACKS

This jack requires no tooling. A colour coded lift-up lid is used to place and insert the wires.

Cat. No.	Colour	Net Price
13-111E-0	White	\$4.00



13-112E-0



13-112F-0

CATEGORY 5E KEYSTONE JACKS

Standard 110 type IDC strips.

Cat. No.	Colour	Net Price
13-112E-0	White	\$3.83

JACK HOLDING FIXTURE

13-112F-0	Inexpensive Fixture to Hold 13-112-0 for wire insertion	2.08
-----------	---	------



13-181-0



13-180-0

CATEGORY 5 TOOLING

Adjustable impact and non-impact punch tools—using one of the inserts this tool will insert and trim wires for the 13-112-0 keystone jack.

Cat. No.	Colour	Net Price
13-180-0	Adjustable Impact Punch Tool	\$35.83
13-181-0	Non-Impact Punch Tool	9.58



13-182-0



13-183-0

CATEGORY 5 INSERTS

Inserts for 13-180-0 and 13-181-0 punch tools.

Cat. No.	Description	Net Price
13-182-0	For 66 Type Terminals—Reversible Punch or Punch & Cut	\$12.92
13-183-0	For 110 Type Terminals—Reversible Punch or Punch & Cut	12.92