

INTERNATIONAL POWER CORDS CONTINENTAL EUROPEAN, DUAL EARTHING, 3 CONDUCTOR STRAIGHT PLUG

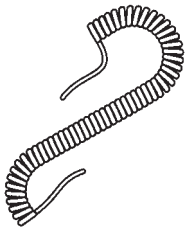
SPECIFICATIONS: CEE7 sheet VII. Operating voltage: 250VAC. Current rating: 16 amp AC 10 amp DC. Insulation resistance: >10M ohms. Cable retention: >50N. Outside body: PVC.

Cat. No.	Length in Meters	Current Rating	Cordage Type and Size	Jacket Colour
17850	2.00	10	H05VVF3G 1.00mm ²	Black or Grey
2111H	2.50	10	H05VVF3G 1.00mm ²	Black

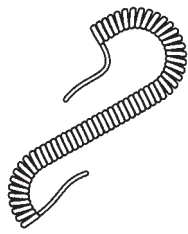
RETRACTILE CORDS

Description	Cat. No.	No. of Cond.	Retracted Length		Practical Extended Length		Std. Unit Lbs. ea.	AWG (stranding) [Dia. in In.]	Insulation Thickness		Jacket Thickness		Nominal O.D.		Nominal Coil O.D.	
			Inch	cm	ft.	m			Inch	mm	Inch	mm	Inch	mm	Inch	mm
23 GAUGE—STRANDED CONDUCTORS (21 x 36)																
 90V 90°C	8415	4 un-shielded	11.5	29.2	6.0	1.8	.2	23 (21x36)	.020	.51	.051	1.30	.250	6.35	.885	22.48
				1 in a bag					Product Description: 5 strands tinned copper-covered steel, 16 strands tinned copper. Rubber insulated. Paper tape, Black neoprene jacket. 6" straight portion at each end cut blunt. Colour code: White, Black, Red, Green.							
	8490	5 un-shielded	11.5	29.2	6.0	1.8	.3	23 (21x36)	.020	.51	.045	1.14	.265	6.73	.915	23.24
				1 in a bag					Product Description: 5 strands tinned copper-covered steel, 16 strands tinned copper. Rubber insulated. Paper tape, Black Neoprene jacket. 6" straight portion at each end cut blunt. Colour code: White, Black, Red, Green, Blue.							
	8491	4 2 individually shielded 2 un-shielded	12.0	30.5	6.0	1.8	.4	23 (21x36)	.020	.51	.047	1.19	.275	6.99	1.01	25.7
			Product Description: 5 strands tinned copper-covered steel, 16 strands tinned copper. Rubber insulated, conductive textile wrap shield plus Beldfoil aluminum-polyester shield with drain wire same as conductor. 100% Shield coverage. Paper tape, Black Neoprene jacket. 6" straight portion at each end cut blunt. Nominal capacitance of shielded conductor (pF/cord): 575. Colour code: White, Black, Red, Green.													
	8497	3 1 shielded 2 un-shielded	11.5	29.2	6.0	1.8	.2	23 (21x36)	.020	.51	.050	1.27	.250	6.35	.885	22.48
			Product Description: 5 strands tinned copper-covered steel, 16 strands tinned copper. Rubber insulated, conductive textile wrap shield plus Beldfoil® aluminum-polyester shield with drain wire same as conductors. 100% shield coverage. Paper tape, Black Neoprene jacket. 6" straight portion at each end cut blunt. Nominal capacitance of shielded conductor (pF/cord): 510. Fits most Astatic and Turner. Colour code: White, Black, Red.													
24 GAUGE—STRANDED CONDUCTORS (45 x 40)																
 30V 90°C	8499	1 shielded	7.5	19.1	4	1.2	.1	(45x40)	.016	.41	.042	1.07	.170	4.32	.650	16.51
			Product Description: Tinned cadmium bronze, rubber insulated, spiral tinned copper shield, cotton wrap, Black Neoprene jacket. 6" straight portion at each end cut blunt. 80% shield coverage. Colour code: White.													

Volex Power Cords

Description	Cat. No.	No. of Cond.	Retracted Length		Practical Extended Length		Std. Unit Lbs. ea.	AWG (strand-ing) [Dia. in In.]	Insulation Thickness		Jacket Thickness		Nominal O.D.		Nominal Coil O.D.	
			Inch	cm	ft.	m			Inch	mm	Inch	mm	Inch	mm	Inch	mm
28 GAUGE—STRANDED CONDUCTORS (7 × 36)																
 30V 90°C	8409	4 un-shielded	12	30.5	6.0	1.8	.6	(7 × 36)	.005	.13	.045	1.14	.165	4.19	.640	16.26
			1 in a bag		Product Description: Tinned copper, nylon insulated, Neoprene jacket. 6" straight portion at each end cut blunt. Colour code: Black, White, Red, Green.											

RETRACTILE CABLES SVO AND SJO

Description U.L. Style C.S.A. Type	Cat. No.	No. of Cond.	Retracted Length		Practical Extended Length		Std. Unit Lbs. ea.	AWG (strand-ing) [Dia. in In.]	Insulation Thickness		Jacket Thickness		Nominal O.D.		Nominal Coil O.D.	
			Inch	cm	ft.	m			Inch	mm	Inch	mm	Inch	mm	Inch	mm
18 GAUGE—STRANDED CONDUCTORS (941 × 34)																
 LISTED SVO 90°C	9479	3	48	121.9	25	7.6	1.6 21.3	18 (41 × 34)	.016	.41	.045	1.14	.275	6.99	.925	23.5
			1 in a bag		Product Description: Bare copper, rubber insulated, cabled with fillers. Paper tape wrap, Black Neoprene jacket. 12" straight portion each end (except 6" straight portion on 8601 and 8603). Jacket removed 1½" each end. Voltage Rating: 300 Volts. U.L. 62 Flex Cord and Fixture Wire. Underwriters Laboratories, Inc. Listed. Certified to C.S.A. Standards, Colour code: (1) White, (2) Black, (3) Green, (4) Red.											

GIVING YOU WHAT YOU WANT!



- SPEED
- PRODUCTS
- INFORMATION
- PROCUREMENT
- LINKS

IT'S ALL HERE... www.e-sonic.com

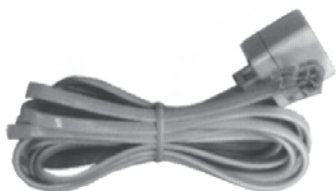
MODE ELECTRONICS



COILED MODULAR CORDS (IVORY COLOUR)

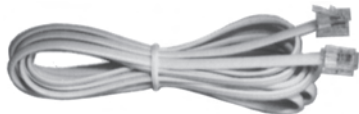
Coiled modular telephone cords suitable for handsets or extension cords. Lengths shown are extended lengths.

Cat. No.	Description	Length	Net Price
12-032-0	4P/4C	7' Length	\$1.17
12-035-0	4P/4C	15' Length	1.67



MODULAR EXTENSION CORDS (IVORY COLOUR)

Cat. No.	Description	Length	Net Price
12-168-0	6P/4C	25' Length	\$2.67



MODULAR CORDS (IVORY COLOUR) PLUG TO PLUG

Cat. No.	Description	Length	Net Price
12-183-0	6P/4C	7' Length	\$0.88
12-185-0	6P/4C	15' Length	1.50

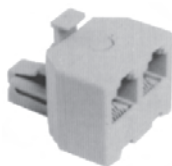


MODULAR JOINERS

Cat. No.	Description	Net Price
12-202-0	6P/4C	\$0.75
12-203-0	6P/6C	.95
12-204-0	8P/8C	1.13

DATA JOINERS

12-203D-0	6P/6C	.95
12-204D-0	8P/8C	1.25



MODULAR 'T' ADAPTER

Cat. No.	Description	Net Price
12-210-0	6P/4C	\$0.88
12-213-0	6P/6C	1.10
12-214-0	8P/8C	2.00

NOTE:

MODULAR TELEPHONE DESIGNATIONS

There are four common types of modular telephone plugs and jacks. The descriptions, uses and common designations are shown below:

4-pin/4-conductor (4P/4C)

-small size 4-conductor used for telephone handsets.

-6 positions but only 4 contacts. Most common type.

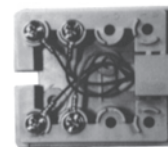
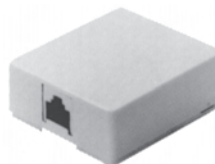
6-pin/4-conductor (6P/4C) (RJ-11)

-same size as 6P/4C but with 6 contacts.

6-pin/6-conductor (6P/6C) (RJ-12)

-larger size most common for data applications.

8-pin/8-conductor (8P/8C) (RJ-45)

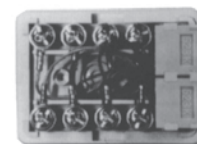


INSIDE VIEW

SURFACE MOUNT WALL JACK (SINGLE)

Surface mount wall jack with adhesive back for easy mounting.

Cat. No.	Colour	Description	Net Price
12-221-0	Ivory	6P/4C	\$1.00
12-221-W-0	White	6P/4C	1.00
12-223-0	Ivory	6P/6C	1.17
12-223W-0	White	6P/6C	1.17
12-225-0	Ivory	8P/8C	1.67
12-225W-0	White	8P/8C	1.67

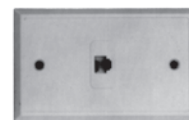


INSIDE VIEW

SURFACE MOUNT WALL JACK (DOUBLE)

Surface mount wall jack with 2 outlets. Adhesive back for easy mounting.

Cat. No.	Description	Net Price
12-222-0	6P/4C	\$1.67
12-224-0	6P/6C	2.45



FLUSH MOUNT WALL PLATE (SINGLE)

White telephone wall plates. Fits standard electrical box.

Cat. No.	Colour	Description	Net Price
12-231W-0	White	6P/4C	\$1.15
12-233W-0	White	6P/6C	1.33
12-233W-0	White	6P/6C	1.33
12-235W-0	White	8P/8C	2.18



FLUSH MOUNT WALL PLATE (DOUBLE)

Ivory or white colour double wall plate. Fits standard electrical box.

Cat. No.	Colour	Description	Net Price
12-232W-0	White	6P/4C	\$1.58
12-234W-0	White	6P/6C	1.92
12-236-0	Ivory	8P/8C	3.00