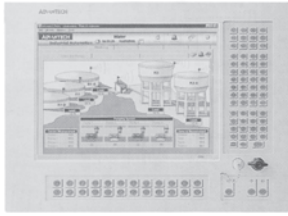


Workstations



AWS-8157/8150

PENTIUM®III/CELERON™ MODULAR WORKSTATION WITH 15" LCD & 7/10 EXPANSION SLOTS

DISPLAY: 15" XGA LCD. **BUS EXPANSION:** 7/10 Slots. **STORAGE DEVICE:** HDD x 1, FDD x 1, CD-ROM x 1. **POWER SUPPLY:** AC 250 W. **CERTIFICATION:** CE, FCC. **REMARK:** Optional Resistive Touchscreen.

Cat. No.	Description
AWS-8157T	7 expansion slots
AWS-8150T	10 expansion slots
AWS-8157T-T	AWS-8157T with resistive touchscreen
AWS-8150T-T	AWS-8150T with resistive touchscreen

AWS-8127

PENTIUM®III/CELERON™ MODULAR WORKSTATION WITH 12.1" LCD & 7 EXPANSION SLOTS

DISPLAY: 12.1 SVGA LCD. **BUS EXPANSION:** 7 Slots. **STORAGE DEVICE:** HDD x 1, FDD x 1, CD-ROM x 1. **POWER SUPPLY:** AC 250W. **CERTIFICATION:** CE, FCC. **REMARK:** Optional Resistive Touchscreen.

Cat. No.	Description
AWS-8127T	7 expansion slots
AWS-8127T-T	AWS-8127T with resistive touchscreen

AWS-843/842

SLIM WORKSTATION WITH 10.4" LCD & 8 EXPANSION SLOTS

DISPLAY: 10.4" VGA TFT LCD. **BUS EXPANSION:** 8 Slots. **STORAGE DEVICE:** HDD x 1, FDD x 1, CD-ROM x 1. **POWER SUPPLY:** AC 260W. **CERTIFICATION:** CE, FCC, CUL, BSMI. **REMARK:** Optional Resistive Touchscreen.

Cat. No.	Description
AWS-842TB	10.4" TFT
AWS-843T	10.4" VGA TFT LCD
AWS-842TB-T	AWS-842TB with resistive touchscreen (RS-232 interface)
AWS-843T-T	AWS-843T-T with resistive touchscreen (RS-232-bus interface)

Panel PC's



IPPC-9150

IPPC-9120/9150

RUGGED PENTIUM®III/CELERON™ INDUSTRIAL PANEL PC WITH 12.1"/15" LCD

DISPLAY: 12.1" SVGA/15" XGA LCD. **CPU:** Socket 370 Pentium®III/Celeron™. **I/O:** Ethernet x 1, Serial port x 4, parallel port x 1, USB port x 2. **STORAGE DEVICE:** HDD x 1, FDD x 1, CD-ROM x 1. **CERTIFICATION:** CE, FCC, CUL, BSMI. **REMARK:** Aluminum Panel & Stainless Chassis.

Cat. No.	Description
IPPC-9120T	12.1" LCD
IPPC-9150T	15" LCD
IPPC-9120T-T	IPPC-9120T with resistive touchscreen
IPPC-9150T-T	IPPC-9150T with resistive touchscreen

IPPC-920/950

RUGGED PENTIUM®MMX™ INDUSTRIAL PANEL PC WITH 12.1"/15" TFT

DISPLAY: 12.1" SVGA/15" XGA LCD. **CPU:** PENTIUM®MMX™. **I/O:** Ethernet x 1, Serial port x 4, parallel port x 1, USB port x 2. **STORAGE DEVICE:** HDD x 1, FDD x 1, CD-ROM x 1. **CERTIFICATION:** CE, FCC, CUL, BSMI. **REMARK:** Aluminum Panel & Stainless Chassis.

Cat. No.	Description
IPPC-950T	15" TFT LCD
IPPC-920T	12.1" TFT
IPPC-950T-T	IPPC-950T with touchscreen
IPPC-920T-T	IPPC-920T with touchscreen

HPC-7100

HEAVY RUGGED PC WITH 10.4" TFT LCD

DISPLAY: 10.4" VGA, Brightness up to 900 nits. **CPU:** PENTIUM®Tillamook. **I/O:** Ethernet x 1, Serial port x 4, parallel port x 1, USB port x 2. **STORAGE DEVICE:** CompactFlash™ Drive. **CERTIFICATION:** CE, FCC, BSMI. **REMARK:** MENA4X enclosure; Fanless.

Cat. No.	Description
HPC-7100T	

Monitors



FPM-3180TV

INDUSTRIAL 18.1-INCH FLAT PANEL MONITOR

DISPLAY: 18.1" SXGA LCD. **BRIGHTNESS(cd/m²):** 200. **VIEWING ANGLE:** 160. **MOUNTING:** Wall/Panel. **CERTIFICATION:** CE, FCC, BSMI. **REMARK:** VGA.

Cat. No.	Description
FPM-3180TV	industrial Flat Panel Monitor
FPM-3180TV-T	FPM-3180TV with touchscreen
FPM-3180TV-N	FPM-3180TV with NFI touchscreen

FPM-3175TV

INDUSTRIAL 17-INCH FLAT PANEL MONITOR

DISPLAY: 17" SXGA LCD. **BRIGHTNESS(cd/m²):** 250. **VIEWING ANGLE:** 160. **MOUNTING:** Wall/Panel/Rack. **CERTIFICATION:** CE, FCC, BSMI. **REMARK:** VGA/NTSC/PAL.

Cat. No.	Description
FPM-3175TV	Industrial flat panel monitor
FPM-3175TV-T	FPM-3175TV with touchscreen
FPM-3175TVR	FPM-3175TV with 19" Rack-Mount Bezel
FPM-3175TVR-T	FPM-3175TV with touchscreen and 19" Rack-Mount Bezel

NOTE: PLEASE CONTACT YOUR ELECTRO SONIC SALES REPRESENTATIVE FOR PRICING AND AVAILABILITY

HMI AND INDUSTRIAL WORKSTATIONS

FEATURES: Industrial panel PCs (IPPC Series). Industrial workstations (AWS Series). Touch Panel Computers (TPS Series). Flat panel monitors (FPM series).

INDUSTRIAL I/O

FEATURES: PCI-bus motion control cards. PCI-bus data acquisition and control cards (PCI-1700 series). IAS-bus motion control cards. ISA-bus data acquisition & control cards (PCL series). PC/104 data acquisition and control modules (PCM-3700 series). PC-based modular industrial controller (MIC-2000). 3U compactPCI system (MIC-3000 series). I/O drivers and utilities. Signal conditioning modules and accessories (ADAM-3000 and PCLD series).

AUTOMATION CONTROLLER AND SOFTWARE

FEATURES: Automation controllers. Automation software. Video servers.

INDUSTRIAL COMPUTERS

FEATURES: Industrial motherboards. Industrial motherboard chassis. Full-sized CPU cards. Industrial computer chassis. Passive backplanes. Industrial VGA cards. Industrial computer peripherals.

EMBEDDED COMPUTING

FEATURES: System on module solutions. Single board computers and accessories. PC/104 modules. Slot CPU cards and accessories. AIMB/POS control boards. Embedded software. Solid state disks. LCD kits.

ARM/XSCALE—BASED EMBEDDED COMPUTING SOLUTIONS

FEATURES: EVA SoC silicon platforms. RISC SOMs and design-in kits. RISC SBCs and Evaluation kits. Panel ready ARM/Xscale based platforms.

COMPACTPCI PLATFORMS

FEATURES: 6U compactPCI enclosures.

DISTRIBUTED I/O MODULES

FEATURES: RS-485 I/O modules (ADAM-4000 and ADAM-5000/485 series). Ethernet I/O modules (ADAM-5000/TCP and ADAM-6000 series). Distributed control I/O systems (ADAM-8000).

INDUSTRIAL COMMUNICATION

FEATURES: RS-232/422/485 series communication cards. Ethernet data gateway. Ethernet Hubs/Switches/Fiber optical converters. Serial communication converters/repeaters.

MEDICAL COMPUTING

FEATURES: General purpose panel computers. Open-frame panel computers. Micro box PC. Mobile computers. Smart home networking platforms. 6U compactPCI boards. CompactPCI peripherals. Blade servers.

APPLIED PANEL COMPUTING

FEATURES: General purpose panel computers. Open-frame panel computers. Micro box PC. Mobile computers. Smart home networking platforms. 6U compactPCI boards. CompactPCI peripherals. Blade servers.

NETWORK APPLIANCES

FEATURES: Internet security platforms. Network application ready platforms. Storage subsystems.

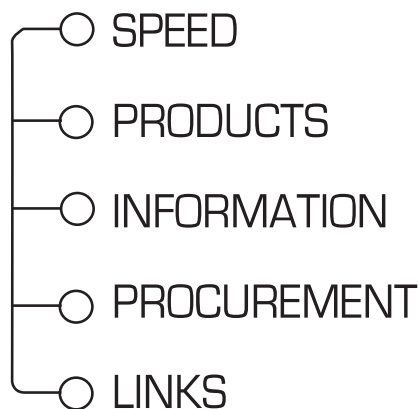
DIGITAL VIDEO PLATFORMS

FEATURES: Digital video platforms.

CERTIFIED PERIPHERALS (P-TRADE)

FEATURES: LCD kits. CPU, memory and other components. Solid state disks. Windows operating system. PC add-on cards.

GIVING YOU WHAT YOU WANT!



IT'S ALL HERE... www.e-sonic.com