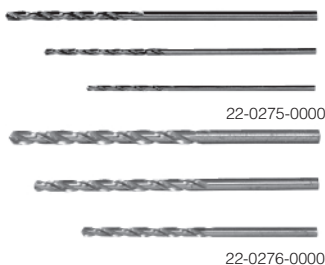


PLUG-IN IC PROTOTYPE BOARD

IC's plug directly into board. 0.1" spacing accepts 14 x 14 pin or 16 pin IC's, up to 20 pin IC's. Silver plated lands with 24 way card edge connector plug on one end. Made of tough phenolic. 0.1" centers x 2 3/8" wide x 4" long x 1/16" thick.

Cat. No.	Net Price
22-0500-0000	\$3.17



DRILL BIT SETS

For drilling component lead wire holes in phenolic and glass epoxy PC boards. Made of high speed tool steel for long life.

Cat. No.	Set Contains	Net Price
22-0275-0000	No. 66 bit .0330" dia., no. 60 bit .0440" dia., no. 1/16 bit .0625" dia.	\$6.20
22-0276-0000	No. 31 bit .1200" dia., no. 27 bit .1440" dia., no. 3/32 bit .0928" dia.	5.12



ETCH RESIST INK PENS

Black felt tip pen for making resist circuits directly on PC boards. Dries instantly for neat, easy application. Can be removed with PC board stripping solution (22-0240-0000).

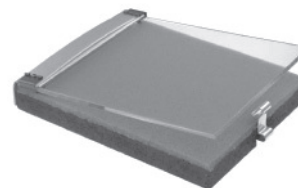
Cat. No.	Description	Net Price
22-0220-0000	Std. size, 1/32" wide	\$3.24
22-0222-0000	Fine line, 1/64" wide	3.45



PURE COPPER CIRCUIT TAPE

6 foot roll of self adhesive pure copper tape for quick repairs or circuit modification. Adheres readily to PC boards chassis and similar surfaces, solders readily. Flexible enough to be used around corners. Extremely low resistance (.020" thick). Supplied on 1" I.D. core.

Cat. No.	Dimensions	Net Price
22-0507-0000	1/8" wide	\$3.86
22-0509-0000	1/4" wide	4.28



EXPOSING FRAMES

Contact frames for use with Exposing Stand. Assures perfect transfer of circuit to sensitized PC board. Special plate glass is hinged for easy use. Foam cushion assures tight contact.

Cat. No.	For Board Size	Net Price
22-0280-0000	4 1/2" x 6 1/2"	\$37.48
22-0393-0000	10" x 12"	52.10



PROFESSIONAL PC BOARD POWER ETCHING SYSTEM KIT

A semi-automatic etching device for use in labs, schools, prototype shops and for limited PC board production. Reduces etching time to minutes. Air pump agitates etching solution for fast, very even etches. Handles up to two 8" x 10" PC boards at a time, either single or double sided. Tank comes with a tip proof wire stand that can remain portable or attached to the bench with screws. Boards fit into a submersible rack with handles that keep hands away from etchant as well as separating the PC boards. Lid prevents splashes, reduces evaporation, and can be turned upside down and used as an auxiliary tray. Kit contains: 1 Etching tank and reservoir lid (12"H x 2 1/2" W x 10 1/2" L) molded polyethylene-ABS PC board holder. 1 Etch-O-Matic power agitating pump, 120 VAC operation, 1 Permanent or portable tip free base. 1 PC board holder and handle. 10 feet of supply hose.

Cat. No.	Description	Net Price
22-0394-0000	Etching System	\$99.03
22-0392-0000	Thermostat Heater	21.11