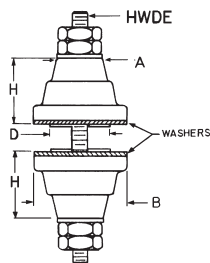


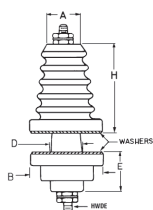
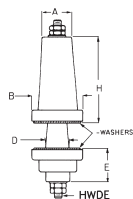
HH Smith



STEATITE INSULATED THRU-PANEL BUSHINGS

Consists of a pair of steatite insulators along with cushion washers and hardware. The 9555 assembly has interlocking insulators which are self centering in mounting hole and may be used on very thin panels. Cushion washers are "Champak" compressed paper or cork. These insulators are ideal for high-voltage, high temperature applications.

Cat. No.	Dimension				Hdwre
	H	B	D	A	
9550AA	1/2"	3/4"	1/2"	3/8"	6-32
9552AA	1-1/8"	1-3/4"	1-1/4"	7/8"	1/4"-20



THRU-PANEL HIGH VOLTAGE INSULATORS

These insulators are ideal for high-voltage, high-temperature standoff and/or feedthru applications. They are not intended for high-vacuum or hermetically sealed use, nor with heavy shear-loads. Compression mounted by means of a stud throughout the entire length of the unit. Extrusion of insulator base extends thru mounting hole, increasing the voltage breakdown rating. Units have flat mounting surfaces and are furnished with cushion washer. Types with jacks have terminal permitting connection above, as well as below panel.

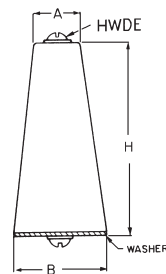
STEATITE

Cat. No.	Illus.	H	B	D	E	A	Hdwre.
9542AA	L	7/8"	3/4"	1/8"	3/8"	1/2"	10-32
9540AB	L	1-1/4"	15/16"	7/16"	1/2"	19/32"	10-32

PORCELAIN

9545	N	1-3/8"	1-1/4"	1/2"	1 1/16"	5/8"	10-32
9546AA	L	2-3/4"	1-3/8"	1 1/16"	1"	15/16"	1/4"-20
9547AA	L	4-1/2"	2-1/8"	3 1/32"	1-1/2"	1-1/16"	1/4"-20

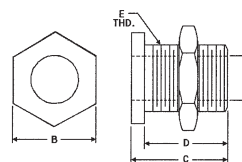
NOTE: PLEASE CONTACT YOUR ELECTRO SONIC SALES REPRESENTATIVE FOR PRICING AND AVAILABILITY



STEATITE CONE INSULATORS

Constructed of grade L-423 or better steatite, with threaded holes. Insulators are furnished complete with two nickel-plated machine screws, nickel-plated brass washers, with cork cushion washer.

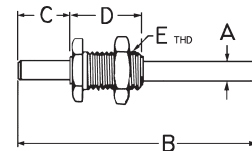
Cat. No.	H	B	A	Hdwre
9500	2 1/32"	5/8"	7/16"	6-32
9501	1-1/32"	3/4"	1/2"	8-32



PANEL BEARING

MATERIAL: Brass, nickel-plated. Supplied with hex nut. Thread: 3/8-32. For 1/4 shaft.

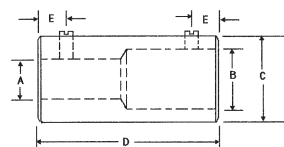
Cat. No.	Dimensions (Inches)			
	A	B	C	D
119	.253	7/16	1/2	7/16



HH SMITH PANEL BEARING ASSEMBLIES

Brass, nickel-plated for 1/4" and 1/8" shafts.

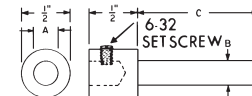
Cat. No.	Dimensions				
	A	B	C	D	E
148	.250"	3"	1/2"	1/2"	3/8"-32
149	.250"	6"	1/2"	1/2"	3/8"-32



SHAFT COUPLERS

MATERIAL: Brass, nickel-plated. #2 screws.

Cat. No.	Dimensions (Inches)				
	A	B	C	D	E
120	1/4	1/4	7/16	3/4	3/16



HH SMITH SHAFT EXTENDERS LONG SHAFT TYPE

Cat. No.	A	B	C	Material
150	1/4"-1/4"		1-1/4"	Brass
160	1/4"-1/4"		3/8"	Brass