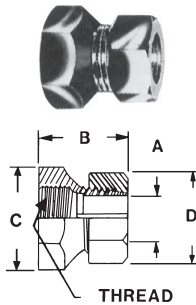


HH SMITH NICKEL PLATED BRASS SPACERS

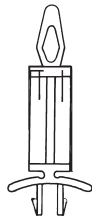
ALL 1/4" O.D.

Cat. No.	Length	Clearance Hole
ROUND CLEARANCE		
2105	.250	#8
2340	.250	#4
2107	.500	#8
2108	.750	#8
2109	1.000	#8
ROUND THREADED		
2374	1.000	4-40



HH SMITH BRASS, NICKEL-PLATED SHAFT LOCK

Cat. No.	For Shaft Size	Dimensions				Thread Size
		A	B	C	D	
181	1/4"	.253"	1/2"	1/2"	7/16"	3/8-32

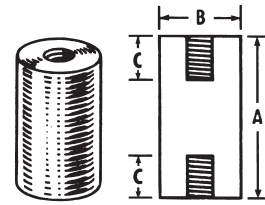


PRINTED CIRCUIT BOARD SUPPORTS

Made of flame retardant nylon. Snaps into circuit board and chassis. Fits in chassis hole .187 diameter. Fits in PC board hole .156.

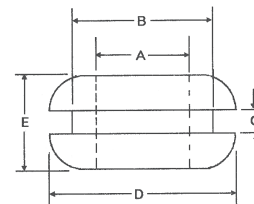
Cat. No.	Length
4295	3/8"

NOTE: PLEASE CONTACT YOUR ELECTRO SONIC SALES REPRESENTATIVE FOR PRICING AND AVAILABILITY



HH SMITH CERAMIC STANDOFFS OUTSIDE GLAZED

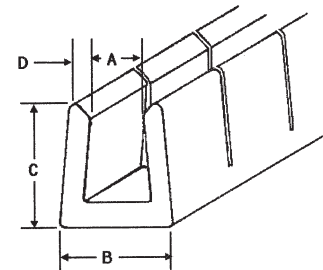
Cat. No.	Dimensions		
	A	B	C
2642	3/8"	3/8"	5/32"
2644	1/2"	1/2"	9/64"
2645	3/4"	1/2"	1/4"
2646	1"	1/2"	3/8"
2647	1-1/2"	1/2"	9/16"



RUBBER GROMMETS

MATERIALS: Black Buna-S synthetic rubber (SBR), approximately 60 durometer.

Cat. No.	Dimensions (Inches)				
	A	B	C	D	E
2187	5/8	7/8	1/16	1-1/8	5/16



CATERPILLAR GROMMETS

MATERIALS: Black nylon, type 6/6. **APPLICATIONS:** "U" shaped nylon extrusion, with slits along length to make grommets fit and size (Minimum 1" dia.) or shape hole, in chassis from 1/32 to 1/8" thick.

Cat. No.	Chassis Thickness (Inches)	Dimensions (Inches)			
		A	B	C	D
2692	.032-.052	.052	.125	.190	.040
2693	.052-.085	.170	.205	.205	.045
2694	.084-.125	.125	.210	.220	.045

**MOVING? CHANGING JOBS?
PLEASE LET US KNOW TO KEEP OUR RECORDS
UP TO DATE AND KEEP YOU INFORMED.**