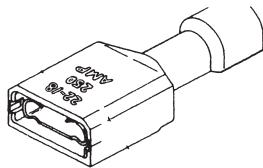


AMP ULTRA-FAST FULLY INSULATED FASTON RECEPTACLES AND TABS

MATERIAL: Housing: Nylon type 6/6. Terminal: Tin-plated, copper. Terminal base material: Brass.

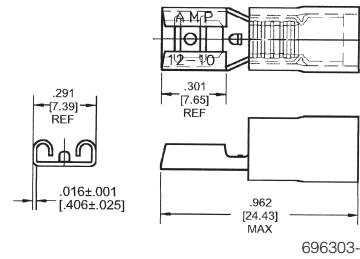
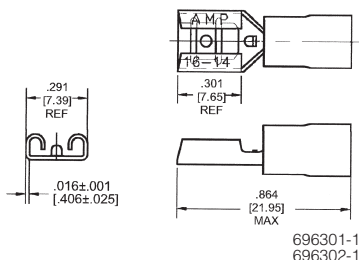
Cat. No.	Wire Range (AWG)	Ins. Dia. Max.	Mating Tab	Net Price
RECEPTACLES, .187 SERIES, COLOUR CODE: RED (TRANSLUCENT)				
2-520182-2	22-18	.135	.020 x .187	\$.10
2-520194-2	22-18	.135	.020 x .187	.11
RECEPTACLES, .250 SERIES, COLOUR CODE: RED (TRANSLUCENT)				
2-520184-2	22-18	.135	.032 x .250	.11
2-520264-2	22-18	.230	.032 x .250	.13
RECEPTACLES, .250 SERIES, COLOUR CODE: BLUE (TRANSLUCENT)				
3-350820-2	16-14	.160	.032 x .250	.11
3-520141-2	16-14	.260	.032 x .250	.12
RECEPTACLES, .250 SERIES, COLOUR CODE: YELLOW (TRANSLUCENT)				
4-520448-2	12-10	.320	.032 x .250	.15
TABS, .250 SERIES, COLOUR CODE: RED (TRANSLUCENT)				
2-520103-2	22-18	.135	.032 x .250	.20
TABS, .250 SERIES, COLOUR CODE: BLUE (TRANSLUCENT)				
3-520107-2	16-14	.160	.032 x .250	.19
FLAG RECEPTACLES, .187 SERIES, COLOUR CODE: RED (TRANSLUCENT)				
2-520337-2	22-18	.165	.032 x .187	.19
FLAG RECEPTACLES, .250 SERIES, COLOUR CODE: RED (TRANSLUCENT)				
2-520129-2	22-18	.165	.032 x .250	.18
FLAG RECEPTACLES, .250 SERIES, COLOUR CODE: BLUE				
3-520133-2	16-14	.185	.032 x .250	.19



AMP ULTRA-FAST PLUS—FULLY INSULATED FASTON RECEPTACLES

MATERIAL: Housing: Nylon. Terminal: Tin-plated, copper. Terminal base material: Brass.

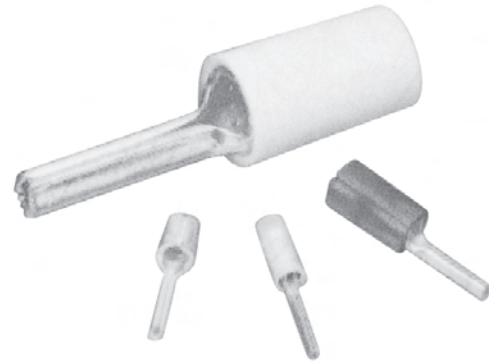
Cat. No.	Wire Range (AWG)	Ins. Dia. Max.	Mating Tab	Net Price Per 1000
RECEPTACLES, .187 SERIES, COLOUR CODE: RED (TRANSLUCENT)				
2-520409-2	22-18	.060-.135	.020 x .187	\$145.96
RECEPTACLES, .250 SERIES, COLOUR CODE: RED (TRANSLUCENT)				
2-520407-2	22-18	.060-.135	.032 x .250	159.07
RECEPTACLES, .250 SERIES, COLOUR CODE: BLUE (TRANSLUCENT)				
3-520408-2	16-14	.090-.160	.032 x .250	159.07



BUDGET FASTON® RECEPTACLES

AMP Budget FASTON Receptacles consist of a tin-plated brass body with an insulated metal sleeve fitted over the terminal barrel. .250 x .032 series. Can accommodate 22-18, 16-14, and 12-10 wire ranges. Meets requirements of UL 310. **APPLICATIONS:** Automotive, lawn equipment, instrumentation, motors, and power supplies. **MATERIALS:** Terminal body: tin-plated brass. Insulator: PVC. Metal sleeve: tin-plated copper.

Cat. No.	Wire Size (AWG)	Net Price Per 1000
696301-1	22-18	\$217.84
696302-1	16-14	223.89
696303-1	12-10	355.38



AMP WIRE PINS

AMP Wire Pins consist of a solid metal pin either with or without plastic insulation on one end. They allow the easy and reliable connection of flexible leads with screw or spring clamps. The individual wires of the lead are crimped in the crimp section of the connector, providing a superior mechanical and electrical connection. Colour-coded insulation protects the crimped connection from contact. **APPLICATIONS:** Switching cabinets. Control units. Any equipment with row clamp or poke-in clamp connectors. **PIN MATERIAL:** Tin-plated copper.

Cat. No.	Type	Wire Range (AWG)	Length (In.)	Net Price Per 1000
736066	TERMINYL	6	1.543	\$7485.16
736067	TERMINYL	4	1.724	2777.12
736068	TERMINYL	2	2.067	1965.92
165142	PIDG	22-16	0.776	613.17
165168	PIDG	22-16	0.906	975.83
165046	PIDG	16-14	0.775	592.44
165172	PIDG	16-14	0.929	1086.72
165049	PIDG	12-10	1.122	1291.87
165143	PLASTIC-GRIP	22-16	0.807	655.28
165167	PLASTIC-GRIP	22-16	0.937	577.03
165075	PLASTIC-GRIP	16-14	0.815	524.23
165171	PLASTIC-GRIP	16-14	0.933	496.39
165085	PLASTIC-GRIP	12-10	1.150	707.23
165045	SOLISTRAND	16-14	0.565	379.75
165048	SOLISTRAND	12-10	0.815	269.74
736013	SOLISTRAND	6	1.236	1947.61
736014	SOLISTRAND	4	1.400	4021.43