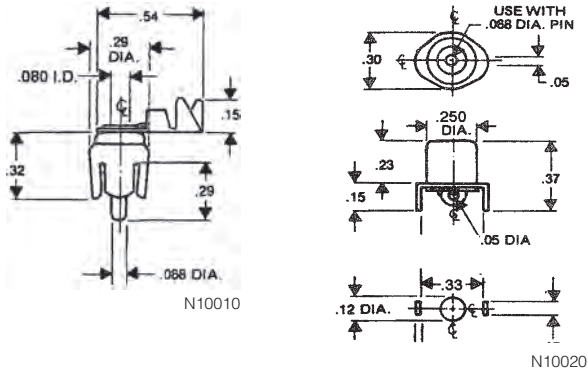


### INSULATED TIP PLUG SOLDERLESS

**HANDLE:** Molded Nylon, Red or Black. **PLUG:** Brass, nickel plated. **RATING:** 12 Amps AC for 10°C Temp. rise, continuous duty. **DESCR.:** Solderless: wire fits through body of tip then wrapped around screw portion and tightened with knurled collar. Threaded type. Fits standard phone tip jacks.

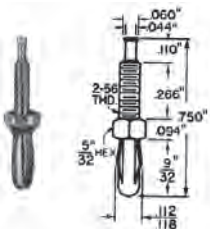
Cat. No.	Colour	Net Price
201-102	Red	\$2.15
201-103	Black	2.15



### MINIATURE PHONE PLUGS AND PHONE JACKS

**MATERIAL:** Bright tin plated steel shell with .125" diameter nickel plated pins. The insulation is low loss Phenolic material.

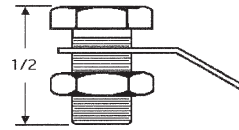
Cat. No.	Description	Net Price
N10010	Miniature Phone Plug	\$1.15
N10020	Miniature Phone Jack	1.15



### MINIATURE BANANA PLUG

**BODY:** Brass, silver plated. **SPRING:** Four-leaved beryllium copper, silver plated. **RATING:** 10 Amps AC for 10°C Temp. rise, continuous duty. **DESCR.:** One piece beryllium copper spring insures positive and lasting contact.

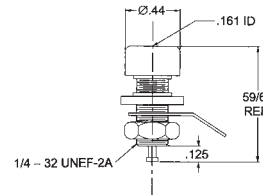
Cat. No.	Net Price
192	\$2.57



### UNINSULATED BANANA JACK

**BODY:** Hex brass, nickel plated. **MOUNTING:** Threaded body held to panel with nut (supplied). **WIRING:** Solders to lug between nut and panel (supplied).

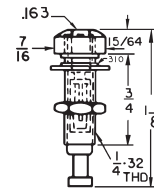
Cat. No.	Head Dia.	Head Height	Body Length	Thread	Net Price
101	3/8	3/32	13/32	1/4-32	\$1.35



### INSULATED BANANA JACK

**HEAD:** Nylon, red, or black. **BODY:** Brass, nickel plated. **RATING:** 15 amps AC for 10°C temperature rise, continuous duty. Voltage 1 KVAC. Capacitance 4.0pf. **DESCRIPTION:** Extruded portion of head and washer provides excellent insulation from panel. Supplied with hex nut, brass tinned lug. Mounts in 5/16" hole in panels up to 1/4" thick. Accepts standard banana plugs.

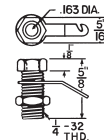
Cat. No.	Colour	Net Price
205-102	Red	\$4.20
205-103	Black	4.20



### INSULATED JACK COMBINATION TYPE

**HEAD:** Nylon, red, black, yellow, green, blue, white. **BODY:** Brass, nickel plated. **SPRING:** Phosphor bronze. **CONTACT:** 12 Amps AC for 10°C Temp. rise, continuous duty. 750 Volts 60 cycle AC continuous working voltage. Capacitance 4.0 mmfd. **DESCR.:** Supplied with hex nut & fibre washer. Accepts standard phone tip plugs or standard banana plugs. Mounts in 5/16" hole in panels up to 1/2" thick.

Cat. No.	Colour	Net Price
206-102	Red	\$2.64
206-103	Black	2.64



### BANANA JACK

**BODY:** Hex brass, nickel plated. **RATING:** 15 Amps AC for 10°C Temp. rise, continuous duty. **DESCR.:** Supplied with hex nut and brass tinned lug. Mounts in 1/4" hole in panels up to 3/8" thick. Accepts standard banana plugs.

Cat. No.	Net Price
109	\$1.67