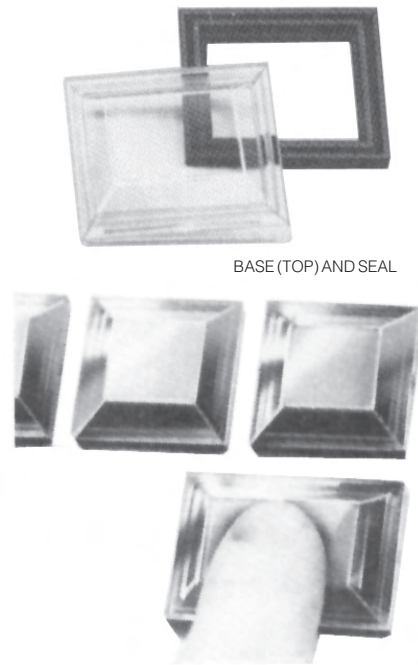


## ELECTRONIC CONTROL KEYLOCK SWITCHES AML27

This AML complementary keylock switch enables control of access to computer peripherals, keyboards, point-of-sale terminals, security systems, and other locations where tampering must be discouraged. This switch has a capacity of 3 amps @ 125VAC, 2 amps 24VDC; 1 pole, 2 position with 90° detent, maintained. Is CSA certified and comes complete with two keys.

Cat. No.	Description
AML27ABK2AAZ1BA	Keylock Switch

NOTE: Contact your Electro Sonic sales representative for pricing.



## PANEL SEALS AML75

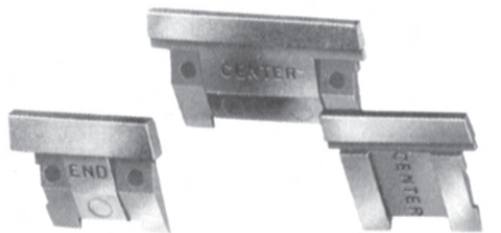
The panel seal consists of a matte black plastic base which press-fits between the panel and switch bezel, and a transparent flexible seal which snaps into the base. Button colour and legends can be viewed without distortion whether lighted or unlighted. Seals can be conveniently replaced or removed for relamping, without removing the switch from panel. The panel seals fit pushbutton switches and indicators and provide protection from contamination, accidental liquid spills, dust, and dirt and are easy to install without tools.

### USE WITH SQUARE .19" HIGH BUTTONS

Cat. No.	Description	Net Price
AML75ABC	Base & Seal	\$6.01

### USE WITH RECTANGULAR .19" HIGH BUTTONS

AML75BBC	Base & Seal	5.96
----------	-------------	------



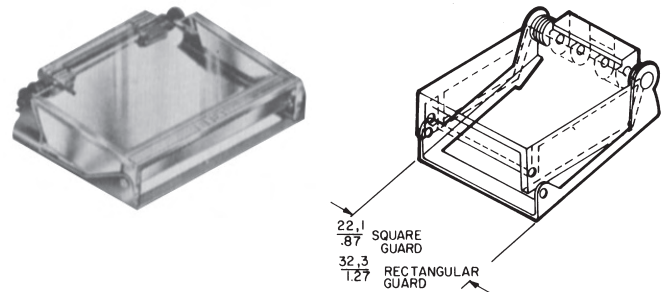
## BARRIERS AML71

The AML71 BARRIERS are used to separate switches and indicators. They also help prevent accidental operation of two or more pushbutton switches with a single push (or by an object that is dropped or placed on a panel in which pushbutton switches are mounted).

Barriers are designed for front of panel mounting, with an individual station or several units in slot mount applications. Two different types are available: end barriers and centre barriers.

When mounting an individual unit, an end barrier is attached to each side of the housing. The centre barrier is used in a slot-mount series.

Cat. No.	Length	Type	Net Price
AML71SCB	Short (For use with square devices and short side of rectangular device).	Centre	\$1.58
AML71SEB		End	1.58
AML71LCB	Long (For use with long side of rectangular device).	Centre	1.58
AML71LEB		End	1.58



## SWITCH GUARD AML76

The AML76 switch guard protects both square and rectangular .19" standard height pushbuttons from inadvertent actuation. It is for use with standard bezel type switches only. Consists of a clear, polycarbonate thermoplastic through which the button is easily visible. The word "lift" is moulded onto the top front edge of the guard. The bracket is bright-finished stainless steel. The switch guard may be assembled to the AML pushbutton before or after the switch is installed in a panel. The pushbutton cannot be operated when the switch guard cover is closed, preventing accidental operation. A wire lock-down feature further prevents unintentional actuation of the switch. Lamps can be replaced with the switch guard attached, without special tools, saving maintenance time.

Cat. No.	Description	Net Price
AML76C10T01P	Square Switch Guard	\$9.81
AML76F10T01P	Rectangular Switch Guard	9.81