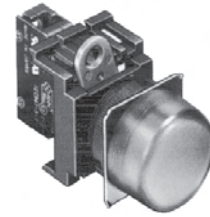


Cat. No.	Appearance	Contact Output	Switch Operation	Net Price
<b>NON-ILLUMINATED (ROUND TYPE) (CONTINUED)</b>				
A22-HB-10M	Round/Half-guard type	SPST-NO	Momentary	\$15.50
A22-HB-01M		SPST-NC		
A22-HB-10A		SPST-NO	Latching	27.50
A22-HB-01A		SPST-NC		
A22-SB-10M	Small-size Mushroom Type (30mm dia. head)	SPST-NO	Momentary	16.00
A22-SB-01M		SPST-NC		
A22-MB-10M	Medium-size Mushroom Type (40mm dia. head)	SPST-NO	Momentary	17.25
A22-MB-01M		SPST-NC		
A22-MB-10A		SPST-NO		21.60
A22-MB-01A		SPST-NC		



### M22 PILOT LIGHTS

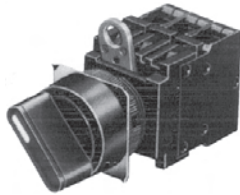
#### 22MM DIA. AND 25MM DIA ROUND AND SQUARE INDICATORS

**FEATURES:** Locking lever ensures easy mounting and removal of switch unit. Use optional 25mm dia. ring to install in 25mm dia panel cutouts. Finger protection mechanism on lamp unit provided as a standard feature. IP65 oil resistant. EN60947-5-1

Cat. No.	Appearance	Contact Output	Switch Operation	Net Price
<b>ILLUMINATED (ROUND TYPE), 24 VAC/DC</b>				
A22L-TB-24A-10M	Round/Extended type LED Lighting (Without transformer)	SPST-NO	Momentary	\$32.25
A22L-TB-24A-01M		SPST-NC		
A22L-TB-24A-10A		SPST-NO	Latching	44.25
A22L-TB-24A-01A		SPST-NC		
A22L-HB-24A-10M	Round/Half-Guard type LED Lighting (Without Transformer)	SPST-NO	Momentary	29.25
A22L-HB-24A-01M		SPST-NC		
A22L-HB-24A-10A		SPST-NO	Latching	51.25
A22L-HB-24A-01A		SPST-NC		
A22L-GB-24A-10M	Round/Clear full-guard type LED Lighting (Without transformer)	SPST-NO	Momentary	39.25
A22L-GB-24A-01M		SPST-NC		
A22L-GB-24A-10A		SPST-NO	Latching	51.25
A22L-GB-24A-01A		SPST-NC		

Cat. No.	Appearance	Contact Output	Switch Operation	Net Price
<b>ILLUMINATED (ROUND TYPE), 110 VAC</b>				
A22L-TB-T1-10M	Round/Extended type LED Lighting (With Transformer)	SPST-NO	Momentary	40.50
A22L-TB-T1-01M		SPST-NC		
A22L-TB-T1-10A		SPST-NO	Latching	52.50
A22L-TB-T1-01A		SPST-NC		
A22L-HB-T1-10M	Round/Half-guard type LED Lighting (With Transformer)	SPST-NO	Momentary	47.50
A22L-HB-T1-01M		SPST-NC		
A22L-HB-T1-10A		SPST-NO	Latching	59.75
A22L-HB-T1-01A		SPST-NC		

**NOTE:** For other colours replace "B" for Black in Cat. No. with "R" = Red, Y = Yellow, G = Green, W = White, A = Blue.



### A22S/W KNOB-TYPE SELECTOR SWITCH INSTALL IN 22MM DIA. OR 25MM DIA PANEL CUTOUT

**FEATURES:** Illuminated and Non-illuminated models. Locking lever ensures easy mounting and removal of switch unit. Increase wiring efficiency and decrease mounting depth with three optional mounting of switch unit contact blocks. Finger-safe contact blocks. Use optional 25mm dia. ring to install in 25mm dia. panel cutouts. Operator colour: Black.

Cat. No.	Positions	Operating Method	Contacts	Net Price
<b>NON-ILLUMINATED KNOB-TYPE SELECTOR SWITCHES</b>				
A22S-2M-11	2	Maintained	SPST-NO + SPST-NC	\$30.30
A22S-2A-11		Spring Return		
A22S-3M-11	3	Maintained	SPST-NO + SPST-NC	33.00
A22S-3A-11		Spring Return		
<b>NON-ILLUMINATED EXTENDED LEVER KNOB-TYPE SELECTOR SWITCHES</b>				
A22S-C2M-11	2	Maintained	SPST-NO + SPST-NC	25.00
A22S-C2A-11		Spring Return		
A22S-C3M-11	3	Maintained	SPST-NO + SPST-NC	26.00
A22S-C3A-11		Spring Return		

**NOTE:** Illuminated and key selector switches also available.

Cat. No.	Rated Voltage	Lighting	Net Price
<b>ROUND/FLUSH WITHOUT TRANSFORMER</b>			
M22-FB-6D	6 VDC	LED	\$22.75
M22-FB-6A	6 VAC		22.75
M22-FB-12A	12 VAC/DC		22.75
M22-FB-24A	24 VAC/DC		22.75
<b>ROUND/FLUSH WITH TRANSFORMER</b>			
M22-FB-T1	110 VAC	LED	29.75
M22-FB-T2	220 VAC		29.75
<b>SQUARE/EXTENDED WITHOUT TRANSFORMER</b>			
M22-CB-6D	6 VDC	LED	31.25
M22-CB-6A	6 VAC		31.25
M22-CB-12A	12 VAC/DC		31.25
M22-CB-24A	24 VAC/DC		31.25
<b>SQUARE/EXTENDED WITH TRANSFORMER</b>			
M22-CB-T1	110 VAC	LED	39.00
M22-CB-T2	220 VAC		39.00

**NOTE:** For other Illumination colours replace "B" for Black in Cat. No. with R = Red, Y = Yellow, G = Green, W = White, A = Blue. To order Incandescent versions of the M22 Pilot Light, replace the last two digits in the Cat. No. ie, 12A, 24A, T1 with the appropriate digits 5, 12, 24 and HI

#### ACCESSORIES FOR M22 PILOT LIGHTS

Cat. No.	Classification	Remarks	Net Price	
<b>CONTACT BLOCKS</b>				
A22-10	SPST-NO	General-purpose load	\$9.00	
A22-10S		Microload		
A22-01	SPST-NC	General-purpose load	9.00	
A22-01S		Microload	33.10	
A22-20	DPST-NO	General-purpose load	36.40	
A22-20S		Microload	36.25	
A22-02	DPST-NC	General-purpose load	36.40	
A22-02S		Microload	36.25	
<b>LAMP SOCKET</b>				
A22-TN	Direct lighting	Used when changing the lighting method	11.30	
A22-T1	Transformer illumination		110 VAC	21.60
A22-T2			220 VAC	21.60

Cat. No.	Classification	Remarks	Net Price
<b>MOUNTING LATCHES</b>			
A22-3200	For momentary models	Provided as standard. Order Mounting Latches only when Mounting Contact Blocks or Lamp Sockets that are purchased individually	2.80

Cat. No.	Classification	Remarks	Net Price
<b>LEGEND PLATE FRAMES, STANDARD SIZE</b>			
A22Z-3321	With Snap-in Legend Plate (Without text)	White	Snap-in Legend Plate is acrylic
A22Z-3322		Red	
A22Z-3323		Black	
A22Z-3320	Without Snap-in Legend Plate		2.30

Cat. No.	Classification	Remarks	Net Price
<b>LEGEND PLATE FRAMES, LARGE SIZE</b>			
A22Z-3331	With Snap-in Legend Plate (Without text)	White	Snap-in Legend Plate is acrylic
A22Z-3332		Red	
A22Z-3333		Black	
A22Z-3330	Without Snap-in Legend Plate		2.70