

CONTEMPRA 2 RAISED TOP

- Constructed of 14 gauge steel.
- Simple up or down adjustment permits either raised installation for venting or flush mounting for a smooth decorative finish.
- Allows for protection from falling objects or liquids.
- When raised, permits convection cooling as gap between top and frame allows warm air to escape on all four sides.
- Mounting hardware is included.
- Finished in rugged textured powder paint.

Cat. No.	Panel Width	Use with Cabinet Depth	Net Price
GREY/BEIGE			
C2T1923RCG1	19"	23.63"	\$181.84
C2T1931RCG1	19"	31.50"	190.84
C2T1936RCG1	19"	36.00"	219.47
BLACK			
C2T1923RBK1	19"	23.63"	181.84
C2T1931RBK1	19"	31.50"	190.84
C2T1936RBK1	19"	36.00"	219.47



CONTEMPRA 2 VENTED TOP

- Constructed of 14 gauge steel.
- Provides a practical and economical solution to convection cooling requirements.
- Mounting hardware included.
- Finished in rugged textured powder paint.

Cat. No.	Panel Width	Use with Cabinet Depth	Net Price
GREY/BEIGE			
C2T1923VCG1	19"	23.63"	\$37.45
C2T1931VCG1	19"	31.50"	59.24
C2T1936VCG1	19"	36.00"	68.13
BLACK			
C2T1923VBK1	19"	23.63"	37.45
C2T1931VBK1	19"	31.50"	59.24
C2T1936VBK1	19"	36.00"	68.13



CONTEMPRA 2 FAN TOP

- 14 gauge steel fan top.
- When more substantial cooling is required, this top is prepunched to accept 4" muffin fans—see below.
- For 23" deep versions, 2 cutouts wide by 2 cutouts deep and for 31.5" and 36" deep versions, 2 cutouts wide by 3 cutouts deep.
- If all cutouts are not used, optional fan covers are available.
- Fans, finger guards and cards are not included.
- Mounting hardware is included.
- Finished in rugged textured powder paint.

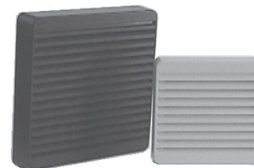
Cat. No.	Panel Width	Use with Cabinet Depth	Number of Fanholes	Net Price
C2T1923FCG1	19"	23.63"	4	\$37.45
C2T1931FCG1	19"	31.50"	6	59.24
C2T1936FCG1	19"	36.00"	6	68.13
C2T1923FBK1	19"	23.63"	4	37.45
C2T1931FBK1	19"	31.50"	6	59.24
C2T1936FBK1	19"	36.00"	6	68.13



CONTEMPRA 2 PRE-WIRED 4" FAN TOP

- 14 gauge steel fan top.
- Fans are pre-wired, installed & complete with 3 foot cord & plug.
- Includes 4-4.7", 115 volt, 50/60 Hz. AC, 100 CFM fans.
- Finger guards are punched into top panel.
- Finished in rugged textured powder paint.

Cat. No.	Panel Width	Use with Cabinet Depth	Net Price
GREY/BEIGE			
C2T1923F4CG1	19"	23.63"	\$201.88
C2T1931F4CG1	19"	31.50"	207.64
C2T1936F4CG1	19"	36.00"	213.90
BLACK			
C2T1923F4BK1	19"	23.63"	201.88
C2T1931F4BK1	19"	31.50"	207.64
C2T1936F4BK1	19"	36.00"	213.90



ECONOMY PLASTIC FILTER FAN GRILLS

- Create your own filter fans or exhaust grill
- Mounts easily with 4 screws using template & hardware provided
- Complete with flame retardant ABS plastic grill & flame retardant synthetic filter
- Can be used with standard 3.15" or 4.7" square fans

Cat. No.	Grill Size		Use With Square Fan Size	Colour	Net Price
	H	W			
XPFA80BK	4.13"	4.13"	3.15"	Black	\$8.07
XPFA80CG	4.13"	4.13"	3.15"	Grey/Beige	8.07
XPFA80GY	4.13"	4.13"	3.15"	ASA 61 Grey	8.07
XPFA120BK	5.91"	5.91"	4.7"	Black	12.29
XPFA120CG	5.91"	5.91"	4.7"	Grey/Beige	12.29
XPFA120GY	5.91"	5.91"	4.7"	ASA 61 Grey	12.29

REPLACEMENT FILTER PACK FOR ABOVE (5 PER PACK)

Cat. No.	Use with Square Fan Size	Net Price
PFF1000	3.15" (XPFA80 series)	\$8.70
PFF2000	4.7" (XPFA120 series)	9.93



FAN PANEL

- Create your own 19" rack mount fan or filter fan from these panels
- Accepts standard square fans
- For a filter fan panel, use our filter grills
- Finished in textured black powder paint
- Fans and hardware not included. Please order separately

Cat. No.	Panel Height		Accepts Fan Size	No. of Fan Hole	Net Price
	Inches	U			
PPFP190802BK1	5.25	3	3.15	2	\$18.47
PPFP190803BK1	5.25	3	3.15	3	18.47
PPFP191202BK1	7.00	4	4.7	2	22.40