

GRILL PANEL

- Create your own 19" rack mount fan or filter fan from these panels
- Accepts standard square fans 4.7"
- Grill panel is punched with integral front finger guards
- Finished in textured black powder paint
- Fans and hardware not included. Please order separately

Cat. No.	Panel Height		Accepts Fan Size	No. of Fan Holes	Net Price
	Inches	U			
PPGP191202BK1	5.25	3	4.7	2	\$22.40



RACK COOLING FAN TRAYS

- Standard 19" rack mount
- Compact and economical rack cooling solution
- Fan trays can be positioned at the bottom of a rack to force air through the cabinet, at the top to exhaust air out or below specific pieces of equipment for spot cooling
- 115VAC 50/60 Hz, thermally protected, ball bearing fans UR/CUR listed
- Circuit breaker protected
- Low profile 1.75" (1U) of panel space
- 6' 14/3 STJW cord with moulded 3 prong plug included
- Integral finger guards above and below fans
- Case width is 17"
- 6 and 9 fan units include an adjustable rear mounting bracket (mounts to rear panel rails) for extra stability
- Shipped fully assembled
- Available with or without on/off switch
- Finished in smooth black powder paint

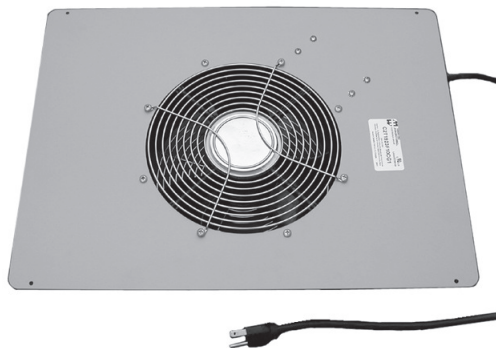
Cat. No.	No. of Fans	Free Flow Air Delivery (CFM)	Running Amps	Running Wattage	Case Depth	Rear Bracket		Net Price
						Min.	Max.	

WITH ON/OFF SWITCH

FT300HA1BK	3	300	0.5	40	7.50"	n/a	n/a	\$261.64
FT600HA1BK	6	600	1.0	80	13.0"	2.4"	19.2"	427.05
FT900HA1BK	9	900	1.5	120	18.50"	7.9"	24.7"	532.31

WITHOUT ON/OFF SWITCH

FT300TA1BK	3	300	0.5	40	7.50"	n/a	n/a	255.62
FT600TA1BK	6	600	1.0	80	13.0"	2.4"	19.2"	421.04
FT900TA1BK	9	900	1.5	120	18.50"	7.9"	24.7"	526.29



CONTEMPRA 2 PRE-WIRED 10" FAN TOP

- 14 gauge steel fan top
- Includes 1 - 10", 115 volt, 50/60 Hz, AC, 550 CFM AC fan 35 watt motor
- Top & bottom finger guards are punched into top panel
- All hardware is included
- 5' cord with molded on plug
- Ball bearing construction
- Airflow exhausts the rack

Cat. No.	Panel Width	Use with Cabinet Depth	Net Price
C2T1923F10CG1	19"	23.63"	\$180.25
C2T1931F10CG1	19"	31.50"	185.06
C2T1936F10CG1	19"	36.00"	189.86
C2T1923F10BK1	19"	23.63"	180.25
C2T1931F10BK1	19"	31.50"	185.06
C2T1936F10BK1	19"	36.00"	189.86



LEVELLING FEET

- Set of 4 levelling feet for Contempra enclosures.
- Contempra 2 frame includes 4 nylon base levelling feet.
- 4 levelling feet will support 800 lbs. max.

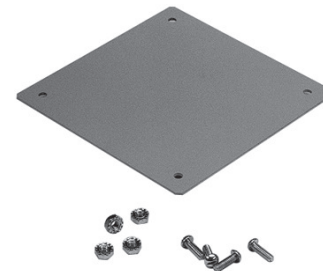
Cat. No.	Description	Net Price
CLFKNS	Non-skid rubber base	\$7.90
CLFK	Standard nylon base	7.05



4" MUFFIN FAN

- 115 Volt AC with ball bearing construction.
- Provides 105 CFM.
- Fan cord sold separately.
- UL recognized, CSA listed, CE certified.

Cat. No.	Dimensions (L x W x H)	Net Price
DNMF100AC115	4.69 x 4.69 x 1.5	\$44.55



CONTEMPRA 2 FAN COVER

- Constructed of 14 gauge steel.
- For covering unused fan too openings on 4.7" fan tops.
- Mounting hardware is included.
- Finished in rugged textured powder point.

Cat. No.	Colour	Net Price
DNFPBK1	Black	\$12.02
DNFPCG1	Grey/Beige	12.02