

# Hammond Electronic Rack Packaging

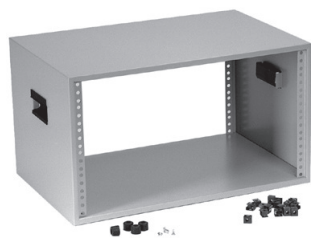
MANU  
195  
CODE



## HEAVY DUTY DOLLY

- 10 gauge folded and welded steel.
- Finished in black textured powder paint.
- For use with DNRR—HDW rack only.
- Complete with 4-2.0" diameter casters.
- Manufacturer's specified capacity of 600 lbs.

Cat. No.	Net Price
1424T	\$284.76



## RCBS SERIES DESKTOP CASE

### APPLICATIONS:

- A compact desktop case that is suitable for small scale 19" mounting requirements.
- Complete with handles for added portability.

### STANDARDS:

- EIA RS-310-D.
- Recommended maximum weight load—600 lbs.

### CONSTRUCTION:

- Fabricated with 16 gauge steel forming a non-vented body.
- Rails are fixed to case and feature punched EIA spacing at the front and rear.
- Designed to accept standard 19" equipment.
- Black ABS handles, rubber feet and 10-32 clip nuts are included.

### FINISH:

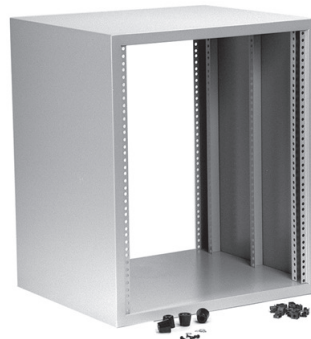
- Finished in Beige (CG1), grey (GY2), and black (BK1) powder paint.

### ACCESSORIES:

- Tilt bases.
- 19" rack mount accessories.



Cat. No.	Panel Height		Overall Dimensions (Inches)			Ship Wt. Lbs.	Net Price
	Inches	Units	H	W	D		
<b>GREY ASA 61 SMOOTH FINISH</b>							
RCBS1900313GY2	3.50	2	5.50	21.00	13.0	13	\$117.49
RCBS1900513GY2	5.25	3	7.25	21.00	13.0	15	126.42
RCBS1900517GY2	5.25	3	7.25	21.00	17.5	16	151.33
RCBS1900713GY2	7.00	4	9.00	21.00	13.0	16	136.71
RCBS1900717GY2	7.00	4	9.00	21.00	17.5	19	176.24
RCBS1900813GY2	8.75	5	10.75	21.00	13.0	16	154.89
RCBS1900817GY2	8.75	5	10.75	21.00	17.5	22	210.07
RCBS1901013GY2	10.50	6	12.50	21.00	13.0	17	162.02
RCBS1901017GY2	10.50	6	12.50	21.00	17.5	22	222.53
RCBS1901213GY2	12.25	7	14.25	21.00	13.0	17	176.24
RCBS1901217GY2	12.25	7	14.25	21.00	17.5	27	243.91
RCBS1901413GY2	14.00	8	16.00	21.00	13.0	17	220.76
RCBS1901417GY2	14.00	8	16.00	21.00	17.5	30	249.22



## RCHS SERIES DESKTOP CASE

### APPLICATION:

- A larger desktop case that is suitable for more substantial, permanent 19" desktop mounting requirements.

### STANDARDS:

- EIA RS-310-D.

### CONSTRUCTION:

- Fabricated with 16 gauge steel forming a non-vented body.
- Rails are fixed to case and feature punched EIA spacing at the front and rear.
- Designed to accept standard 19" equipment.
- Includes rubber feet, black ABS handles and 10-32 clip nuts.
- Recommended maximum weight load—800 lbs.
- Finished in rugged textured powder paint.



Cat. No.	Panel Height		Overall Dimensions (Inches)			Ship Wt. Lbs.	Net Price
	Inches	Units	H	W	D		
<b>GREY/BEIGE TEXTURED FINISH</b>							
RCBS1900313CG1	3.50	2	5.50	21.00	13.0	13	\$117.49
RCBS1900513CG1	5.25	3	7.25	21.00	13.0	15	126.42
RCBS1900517CG1	5.25	3	7.25	21.00	17.5	16	151.33
RCBS1900713CG1	7.00	4	9.00	21.00	13.0	16	136.71
RCBS1900717CG1	7.00	4	9.00	21.00	17.5	19	176.24
RCBS1900813CG1	8.75	5	10.75	21.00	13.0	16	154.89
RCBS1900817CG1	8.75	5	10.75	21.00	17.5	22	210.07
RCBS1901013CG1	10.50	6	12.50	21.00	13.0	17	162.02
RCBS1901017CG1	10.50	6	12.50	21.00	17.5	22	222.53
RCBS1901213CG1	12.25	7	14.25	21.00	13.0	17	176.24
RCBS1901217CG1	12.25	7	14.25	21.00	17.5	27	243.91
RCBS1901413CG1	14.00	8	16.00	21.00	13.0	17	220.76
RCBS1901417CG1	14.00	8	16.00	21.00	17.5	30	249.22

Cat. No.	Panel Height		Overall Dimensions (Inches)			Ship Wt. Lbs.	Net Price
	Inches	Units	H	W	D		
<b>BLACK TEXTURED FINISH</b>							
RCBS1900313BK1	3.50	2	5.50	21.00	13.0	13	117.49
RCBS1900513BK1	5.25	3	7.25	21.00	13.0	15	126.42
RCBS1900517BK1	5.25	3	7.25	21.00	17.5	16	151.33
RCBS1900713BK1	7.00	4	9.00	21.00	13.0	16	136.71
RCBS1900717BK1	7.00	4	9.00	21.00	17.5	19	176.24
RCBS1900813BK1	8.75	5	10.75	21.00	13.0	16	154.89
RCBS1900817BK1	8.75	5	10.75	21.00	17.5	22	210.07
RCBS1901013BK1	10.50	6	12.50	21.00	13.0	17	162.02
RCBS1901017BK1	10.50	6	12.50	21.00	17.5	22	222.53
RCBS1901213BK1	12.25	7	14.25	21.00	13.0	17	176.24
RCBS1901217BK1	12.25	7	14.25	21.00	17.5	27	243.91
RCBS1901413BK1	14.00	8	16.00	21.00	13.0	17	220.76
RCBS1901417BK1	14.00	8	16.00	21.00	17.5	30	249.22

Cat. No.	Panel Height		Overall Dimensions (Inches)			Ship Wt. Lbs.	Net Price
	Inches	Units	H	W	D		
<b>GREY/BEIGE TEXTURED FINISH</b>							
RCHS1900817CG1	8.75	5	10.75	21	17.5	28	\$227.78
RCHS1901017CG1	10.50	6	12.50	21	17.5	28	263.42
RCHS1901024CG1	10.50	6	12.50	21	24.5	28	354.71
RCHS1901417CG1	14.00	8	16.00	21	17.5	30	269.69
RCHS1901424CG1	14.00	8	16.00	21	24.5	32	373.36
RCHS1901717CG1	17.50	10	19.50	21	17.5	32	280.04
RCHS1901724CG1	17.50	10	19.50	21	24.5	43	385.82
RCHS1902217CG1	22.75	13	24.75	21	17.5	38	304.93
RCHS1902224CG1	22.75	13	24.75	21	24.5	50	398.27
RCHS1902817CG1	28.00	16	30.00	21	17.5	42	358.42
RCHS1902824CG1	28.00	16	30.00	21	24.5	56	414.82

Cat. No.	Panel Height		Overall Dimensions (Inches)			Ship Wt. Lbs.	Net Price
	Inches	Units	H	W	D		
<b>BLACK TEXTURED FINISH</b>							
RCHS1900817BK1	8.75	5	10.75	21	17.5	28	227.78
RCHS1901017BK1	10.50	6	12.50	21	17.5	28	263.42
RCHS1901024BK1	10.50	6	12.50	21	24.5	28	354.71
RCHS1901417BK1	14.00	8	16.00	21	17.5	30	269.69
RCHS1901424BK1	14.00	8	16.00	21	24.5	32	373.36
RCHS1901717BK1	17.50	10	19.50	21	17.5	32	280.04
RCHS1901724BK1	17.50	10	19.50	21	24.5	43	385.82
RCHS1902217BK1	22.75	13	24.75	21	17.5	38	304.93
RCHS1902224BK1	22.75	13	24.75	21	24.5	50	398.27
RCHS1902817BK1	28.00	16	30.00	21	17.5	42	358.42
RCHS1902824BK1	28.00	16	30.00	21	24.5	56	414.82