

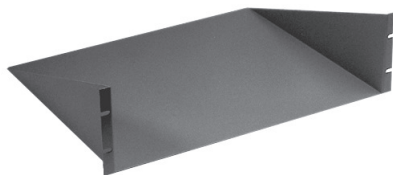


FIXED SHELF—UNVENTED OR VENTED

- Attach to both pair of 19" rack combination rails.
- The vented version provides a sturdy shelf without obstructing upward heat movement.
- Front & rear lip folded down for extra strength.
- Sides folded up for easy top hardware installation.
- Sides are slotted for easy adjustment with most rail depth locations.
- Rugged textured powder paint finish.
- Heavy duty 14 gauge construction.
- Weight load tested to 350 lbs.

Cat. No.	Colour	Shelf Depth	Net Price
UNVENTED SHELF			
RFUS1918BK1	Black	18"	\$50.17
RFUS1918CG1	Grey/Beige	18"	50.17
RFUS1921BK1	Black	21"	53.18
RFUS1921CG1	Grey/Beige	21"	53.18
RFUS1926BK1	Black	26"	56.96
RFUS1926CG1	Grey/Beige	26"	56.96
RFUS1931BK1	Black	31"	60.95
RFUS1931CG1	Grey/Beige	31"	60.95

Cat. No.	Colour	Shelf Depth	Net Price
VENTED SHELF			
RFVS1918BK1	Black	18"	50.17
RFVS1918CG1	Grey/Beige	18"	50.17
RFVS1921BK1	Black	21"	53.18
RFVS1921CG1	Grey/Beige	21"	53.18
RFVS1926BK1	Black	26"	56.96
RFVS1926CG1	Grey/Beige	26"	56.96
RFVS1931BK1	Black	31"	60.95
RFVS1931CG1	Grey/Beige	31"	60.95



RAIL MOUNTED SHELF UNIT

- Formed 14 gauge steel construction.
- Offered in **vented** and **unvented** formats.
- Shelf can mount as internal shelf or external shelf/work space.
- Shelf is 15" deep x 17.25" wide and uses 5/4" panel space.
- Rugged powder paint finish.
- Mounting hardware not included, please order separately.
- Weight load tested to 200 lbs.

Cat. No.	Colour	Paint Finish	Net Price
UNVENTED SHELF			
RASU190515BK1	Black	Textured	\$80.80
RASU190515CG1	Grey/Beige	Textured	80.80
RASU190515GY2	ASA61 Grey	Smooth	80.80
VENTED SHELF			
RASV190515BK1	Black	Textured	91.24
RASV190515CG1	Grey/Beige	Textured	91.24
RASV190515GY2	ASA61 Grey	Textured	91.24



EQUIPMENT SHELF

- This closed utility shelf has 1.5 diameter cord access holes in each bottom corner.
- Fabricated from 18 gauge steel.
- Inside dimensions are: 17.2" (wide) x 15.0" (deep).
- Height is 1" less than panel space.



- Finished in white (WH2) powder paint.
- Mounting hardware not included, please order separately.
- Weight load tested to 75 lbs.

Cat. No.	Panel Height		Net Price
	Inches	Units	
RASE1900815WH2	8.75	5	\$95.69
RASE1901015WH2	10.50	6	99.00
RASE1901215WH2	12.25	7	111.09



KEYBOARD DRAWER

- Standard 19" rack mount.
- Supplied complete with slides and mounting hardware.
- Uses only 3.50" of panel space.
- Unique design maximizes available space between rails (17.77").
- Rugged black textured powder paint finish.
- Mounts on 2 pair of mounting rails (front and back).
- Weight load tested to 120 lbs.

Cat. No.	Shelf Depth	Net Price
RAKS19BK1	15"	\$115.44



UNVENTED AND VENTED SLIDING SHELVES

- Attach to both pair of 19" rack rails.
- The vented version provides a sturdy shelf without obstructing upward heat movement.
- Heavy duty ball bearing slides included.
- Folded on all four sides for extra strength.
- Rugged textured powder paint finish.
- Heavy duty 14 gauge steel.
- Weight load tested to 120 lbs.

Cat. No.	Colour	Shelf Depth	Net Price
UNVENTED SHELF			
RSUS1918BK1	Black	18"	\$139.62
RSUS1918CG1	Grey/Beige	18"	139.62
RSUS1921BK1	Black	21"	148.78
RSUS1921CG1	Grey/Beige	21"	148.78
RSUS1926BK1	Black	26"	155.64
RSUS1926CG1	Grey/Beige	26"	155.64
RSUS1931BK1	Black	31"	250.00
RSUS1931CG1	Grey/Beige	31"	250.00

Cat. No.	Colour	Shelf Depth	Net Price
VENTED SHELF			
RSVS1918BK1	Black	18"	144.20
RSVS1918CG1	Grey/Beige	18"	144.20
RSVS1921BK1	Black	21"	151.07
RSVS1921CG1	Grey/Beige	21"	151.07
RSVS1926BK1	Black	26"	160.22
RSVS1926CG1	Grey/Beige	26"	160.22
RSVS1931BK1	Black	31"	256.36
RSVS1931CG1	Grey/Beige	31"	256.36



Continued on next page....