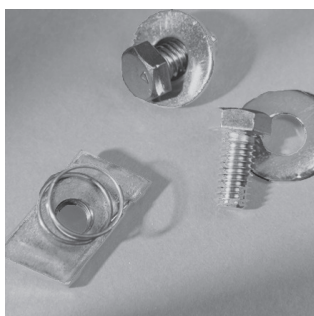


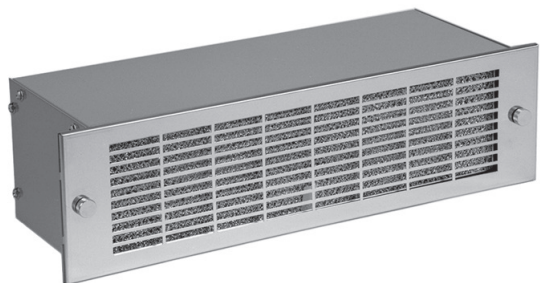
1/4-20 spring loaded nuts and 0.62" round head slotted bolts and washers for "C" channels.

| Cat. No. | Description | Net Price |
|----------|-------------|-----------|
| 1421S | Pkg. of 4 | \$14.82 |



3/8 x 16 spring loaded nuts and 0.75" hex head bolts and washers for "C" channels (used in racks with Amhal strut rail mounting).

| Cat. No. | Description | Net Price |
|----------|-------------|-----------|
| 1463S | Pkg. of 3 | \$22.80 |



RACK INTAKE BLOWERS

- Standard 19" rack mount.
- Each unit contains a quadruplex centrifugal blower, powered by a single precision ball-bearing motor.
- Air delivery from more than 50% of their 17" width.
- Internal neoprene isolation mounts reduce transmission of vibration to the rack.
- Air intake only, to pressurize the rack with filtered air.
- Heavy steel construction.
- Attractive 19" stainless steel grill included.
- 115 VAC, 50/60 Hz, motor is UR/CSA listed, ball bearing type, cooled by incoming air.
- Includes permanent filter.
- Comes with 6" STJW 3-wire cord.

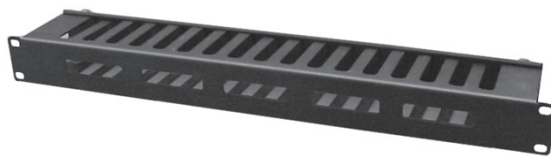
| Cat. No. | Free Flow Air Delivery (CFM) | Ambient Temp (F) | Panel Height | | Net Price |
|----------|------------------------------|------------------|--------------|-------|-----------|
| | | | Inches | Units | |
| KP350A | 150 | -20 to +250 | 3.50 | 2 | \$574.16 |
| KP529A | 300 | -20 to +250 | 5.25 | 3 | 600.65 |
| KP729A | 470 | -20 to +250 | 7.00 | 4 | 870.09 |



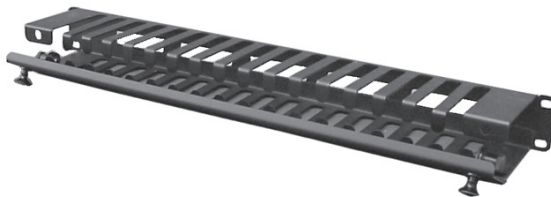
CABLE ORGANIZING RING PANELS

- Five steel rings welded to a folded (for extra strength) 19" rack panel.
- Rings extend 3.5" from panel front.
- Rugged textured black powder paint finish.
- Mounting hardware not included, please order separately.

| Cat. No. | Panel Height | | Net Price |
|---------------|--------------|-------|-----------|
| | Inches | Units | |
| PCMBS19001BK1 | 1.75 | 1 | \$43.49 |
| PCMBS19003BK1 | 3.50 | 2 | 48.07 |



FRONT VIEW

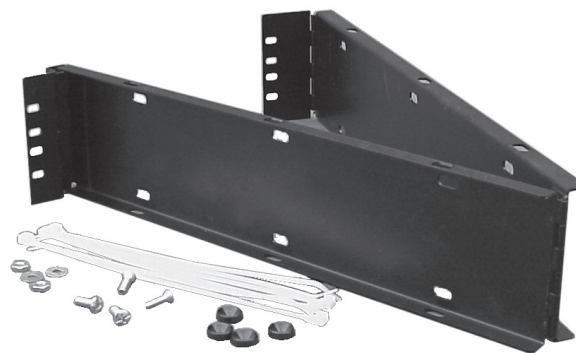


REAR VIEW

CABLE ORGANIZING METAL FINGER PANELS

- 19" rack mount.
- Snap open, hinged rear door.
- Rack mount side has five slotted openings.
- Extends 3" (not including snap buttons) into rack depth.
- Rugged textured black powder paint finish.
- Mounting hardware not included, please order separately.

| Cat. No. | Panel Height | | Net Price |
|---------------|--------------|-------|-----------|
| | Inches | Units | |
| PCMDS19001BK1 | 1.75 | 1 | \$83.56 |
| PCMDS19003BK1 | 3.50 | 2 | 96.71 |
| PCMDS19005BK1 | 5.25 | 3 | 162.51 |



HINGED CABLE GUIDE

- Mounts to standard 19" rack rails.
- Steel construction.
- Includes mounting hardware & tie wraps.
- Rugged textured black powder paint finish.

| Cat. No. | Panel Height | | Net Price |
|----------|--------------|-------|-----------|
| | Inches | Units | |
| CGUIDE | 3.50 | 2 | \$91.76 |