

ADVANTECH



WEBLINK-2040 WEB-ENABLED DEVICE CONNECTION

FEATURES: 486/66 MHz processor. Windows® CE. Embedded HTTP 1.1 server. 3-port RS-232/485. 10/100 Base-T ethernet. Web-based HMI/SCADA software runtime & I/O drivers pre-built.

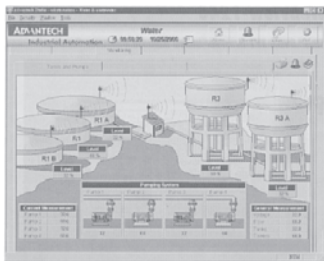
Cat. No.	Description
Weblink2040/CE	Web-enabled Device Connection with Windows® CE
Weblink2040/OPC	Web-enabled Device Connection with OPC Data Server
Weblink2040/SDA	Web-enabled Device Connection with SCADA/HMI Server
ASTUDIO-WNT/DEV	Advantech Studio for eAutomation Development Edition



WEBLINK-2051 WEB-ENABLED DEVICE CONNECTION WITH PC/104 EXTENSION

FEATURES: GSM 300 MHz processor. Windows® CE. Embedded HTTP 1.1 server. 4-port RS-232/485. 10/100 Base-T ethernet. PC/104 extension. Web-based HMI/SCADA software runtime & I/O drivers pre-built.

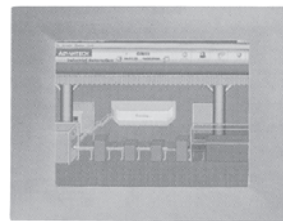
Cat. No.	Description
Weblink2051/CE	Web-enabled Device Connection with Windows® CE
Weblink2051/OPC	Web-enabled Device Connection with OPC Data Server
Weblink2051/SDA	Web-enabled Device Connection with SCADA/HMI Server
ASTUDIO-WNT/DEV	Advantech Studio for eAutomation Development Edition



ADVANTECH STUDIO WEB-BASED HMI/SCADA DEVELOPMENT

FEATURES: Windows® NT/98/2000/CE. Publish real-time graphic trending, alarms, reports to standard browsers. Bundles with over 20 controller drivers. Conforms to Microsoft DNA, OPC, DDE, ODBC, XML and ActiveX.

Cat. No.
ASTUDIO



WEBOIT-642 5.7" QVGA STN WEB-ENABLED OPERATOR INTERFACE TERMINAL

FEATURES: 5.7" QVGA STN LCD. Intel StrongARM 206 MHz processor. Analog Resistive Touch Screen. Windows® CE pre-load. WinCE-based WebOIT software runtime included. Front panel meets NEMA 4/IP65.

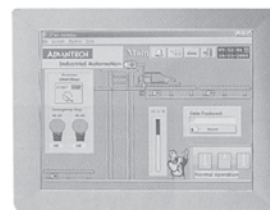
Cat. No.	Description
WebOIT-642	5.7" QVGA STN Web-enabled Operator Interface Terminal
ASTUDIO-WNT/DEV	Advantech Studio for eAutomation Development Edition
PS-DC24	110 V _{AC} to 24 V _{DC} , 50 watts power adapter



WEBOIT-650 6.4" VGA TFT WEB-ENABLED OPERATOR INTERFACE TERMINAL

FEATURES: 6.4" high brightness VGA TFT LCD. Intel Pentium® 266 MMX™ processor. Analog Resistive Touch Screen. Windows® CE pre-load. WinCE-based WebOIT software runtime included. Front panel meets NEMA 4/IP65.

Cat. No.	Description
WebOIT-650	6.4" VGA TFT Web-enabled Operator Interface Terminal
ASTUDIO-WNT/DEV	Advantech Studio for eAutomation Development Edition
PS-DC24-50	110 V _{AC} to 24 V _{DC} , 50 watts power adapter



WEBOIT-1240 12.1" SVGA TFT WEB-ENABLED OPERATOR INTERFACE TERMINAL

FEATURES: 12.1" SVGA TFT LCD display. Intel StrongARM 206 MHz. Analog Resistive Touch Screen. Windows® CE pre-load. WinCE-based WebOIT software runtime included. Front panel meets NEMA 4/IP65.

Cat. No.	Description
WebOIT-1240	12.1" TFT SVGA LCD Web-enabled Operator Interface Terminal
ASTUDIO-WNT/DEV	Advantech Studio for eAutomation Development Edition

**NOTE: PLEASE CONTACT YOUR ELECTRO SONIC
SALES REPRESENTATIVE FOR PRICING AND
AVAILABILITY**