

# ebmpapst

## S-Force

The S-Force series of compact fans are the most powerful performers in the world. Whether for cooling server rooms or switch cabinets, complex machines or sensitive medical technology - the intelligent and controllable high performance fans are suited for many applications. The S-Force range in sizes from 3.15 in. to 6.77 in., each size representing the benchmark in its class with respect to air performance and pressure build-up, optimum motor efficiency and long service life. These compact fans reach optimal speeds of up to 14,000 rpm and operating values that had previously been attained only by large fans or blowers.



6314/2TDHHP  
5314/2TDHHP

## Energy Saving Motors (ESM)

ESM axial fans are a versatile alternative to traditional axial fans with shaded-pole motors used in refrigeration applications. ESM axial fans feature a compact design with optimized impellers, low acoustic noise, and a programmable EC motor with two selectable speeds. For new or retrofit applications, ESM fans will save users money - up to 66% over typical shaded-pole motors.



W1G200-EA91

## Tubeaxial

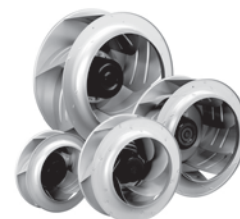
Tubeaxial fans are compact axial fans which are suitable for high air performance with moderate pressure build-up. The flow of air through the fan blades is parallel to the rotation axis. ebm-papst offers a wide selection of AC and DC compact fans with integrated electronics, variable air flow capacity and interactive software-assisted motor management.



W2S130-AA03-01  
W2S130-AA25-01  
W2S130-BH15-01

## Backward-Curved Motorized Impeller

Centrifugal fans with backward curved blades have an excellent aerodynamic efficiency. Backward curved impellers are used primarily for intake suction and do not require a spiral housing. Their dimensions and capacities make these fans the ideal choice for computer trays, telecommunication systems, clean-room technology, roof top ventilation systems. Available in AC or EC technology.



R2E220-AA40-23  
R2E220-AA44-23  
R1G190-AC37-52

## Flatpak

Flat, pressure resistant fans with 90° air deflection engineered especially for compact installations. Features modified exhaust opening for lowest noise with optional Vario-Pro for precise performance control, and optimized impellers. Suitable for applications such as computers, servers, power supplies, medical testing, and telecommunication equipment.



RL90-18-00  
RL90-18/06  
RL125-19/12N/12

*the engineer's choice*