

Application

Avoid an unplanned trip when a pull box is required. Unique design provides compact storage of a pull box so it can be available when needed. This junction and pull box is for use in commercial and general industrial applications. Ideal to store in service trucks, maintenance cribs, or gang boxes.

Features

- Stores flat to save space
- Sides are easily hand formed along fold lines
- Sides interlock and snap in place without tools
- Unique keyhole screw slots in the cover permit removal of cover without extracting screws

Construction

- 16 gauge steel
- Flat, removable covers fastened with plated steel screws
- Available with or without knockouts
- Provision for grounding
- Mounting holes on back of box
- Each size is shrink wrapped in packages of two with covers and hardware nested between the two enclosure bodies

Finish

ANSI 61 gray polyester powder paint inside and out over plated steel

Industry Standards

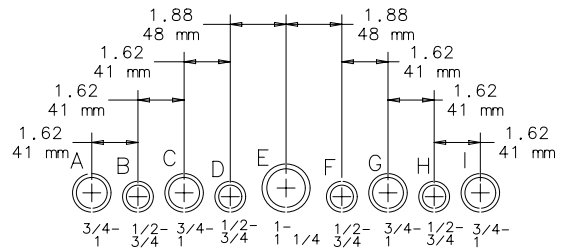
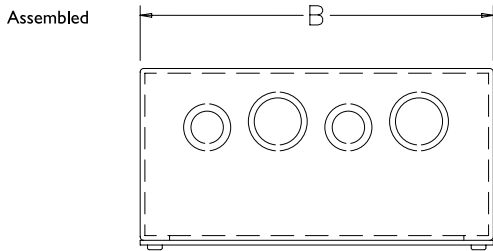
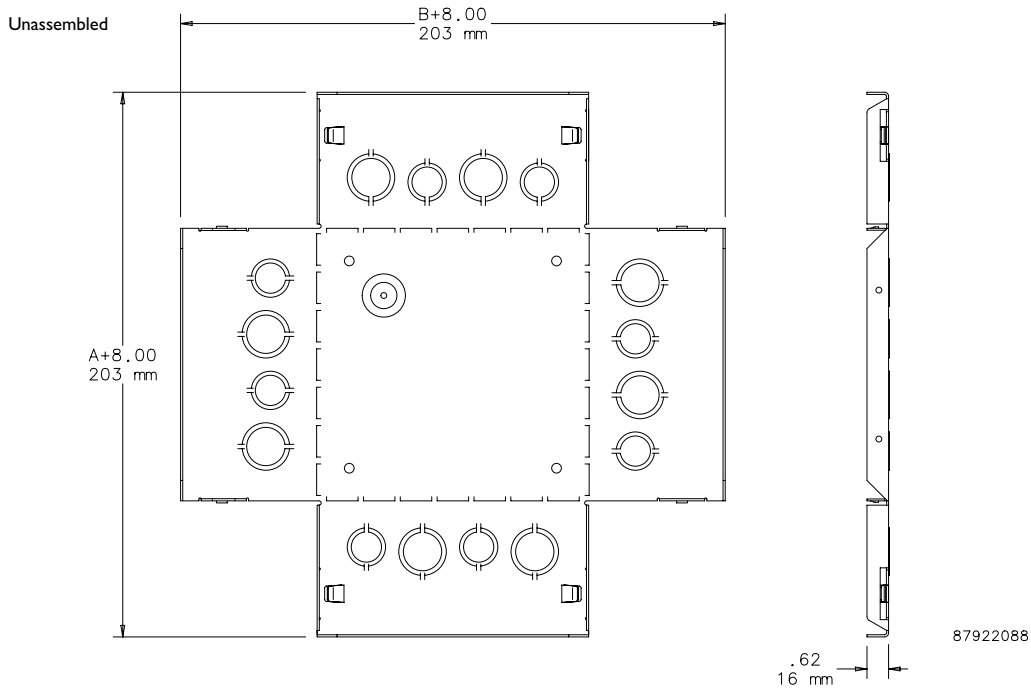
UL 50, File No. E27525: Type I
NEMA/EEMAC, Type I
cUL C22.2 No. 40, File No. E27525: Type I
IEC 60529, IP30

Accessories

Touch-Up Paint (ATPPY61)

Standard Sizes EZ FORM Screw Cover Pull Box

Catalog Number		Finished Size A x B x C		Knockout Pattern
with Knockouts	without Knockouts	inch	mm	
ASE6X6X4EZ	ASE6X6X4EZNK	6.00 x 6.00 x 4.00	152 x 152 x 102	BCD
ASE8X8X4EZ	ASE8X8X4EZNK	8.00 x 8.00 x 4.00	203 x 203 x 102	FGHI
ASE12X12X4EZ	ASE12X12X4EZNK	12.00 x 12.00 x 4.00	305 x 305 x 102	CDEFG



CONDUIT SIZES
KNOCKOUT PATTERN
(FROM OUTSIDE OF BOX)

