


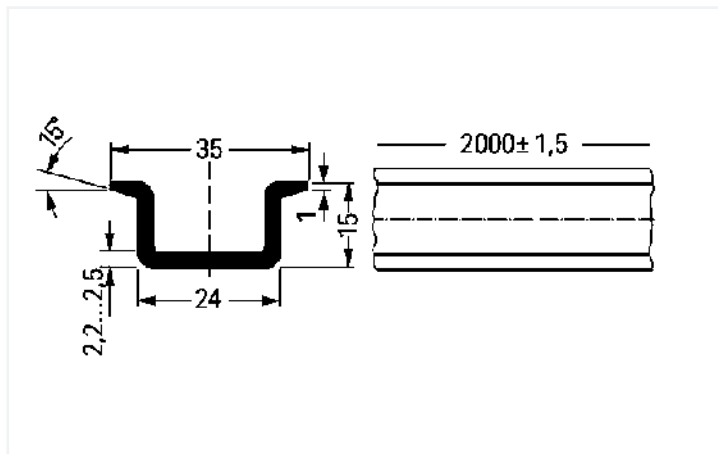
## Data Sheet | Item Number: 210-118

Steel carrier rail; 35 x 15 mm; 2.3 mm thick; 2 m long; unslotted; according to EN 60715; silver-colored

<https://www.wago.com/210-118>



Color:  silver-colored



Dimensions in mm

### Technical data

Main product function

Mounting accessories

### Physical data

Width	2000 mm / 78.74 inches
Height	15 mm / 0.591 inches
Depth	35 mm / 1.378 inches

### Material Data

Color	silver-colored
Fire load	0 MJ
Weight	1820 g

### Commercial data

Product Group	2 (Terminal Block Accessories)
eCl@ss 10.0	27-40-06-02
eCl@ss 9.0	27-40-06-02
ETIM 8.0	EC001285
ETIM 7.0	EC001285
PU (SPU)	10 (1) pcs
Packaging type	Box
Country of origin	IT
GTIN	4017332277181
Customs tariff number	72169180000

Downloads

Environmental Product Compliance

Compliance Search

Environmental Product Compliance 210-118



Documentation

Bid Text

210-118	31.08.2017	doc 23.50 KB	
210-118	19.02.2019	xml 2.64 KB	

CAD/CAE-Data

CAD data

2D/3D Models 210-118



CAE data

EPLAN Data Portal 210-118



WSCAD Universe 210-118



ZUKEN Portal 210-118



1 Compatible Products

1.1 Optional Accessories

1.1.1 Installation

1.1.1.1 Mounting accessories



**Item No.: 209-137**

Mounting adapter; can be used as end stop; 6.5 mm wide; gray



**Item No.: 249-117**

Screwless end stop; 10 mm wide; for DIN-rail 35 x 15 and 35 x 7.5; gray



**Item No.: 249-197**

Screwless end stop; 14 mm wide; for DIN-rail 35 x 15 and 35 x 7.5; gray



**Item No.: 249-116**

Screwless end stop; 6 mm wide; for DIN-rail 35 x 15 and 35 x 7.5; gray

1.1.2 Marking

1.1.2.1 Label



**Item No.: 210-808**

Labels; for Smart Printer; 9.5 x 25 mm; white



**Item No.: 210-708**

Labels; for TP printers; 9.5 x 25 mm; white

Installation Notes

DIN-Rail	Item No.	Cu cross-section [A]	Acc. to IEC 60439-1
DIN 35 x 7.5 (steel) drilled	210-112	76	16A6
undrilled	210-113	76	16A6
DIN 35 x 15 (steel)			
1.5 mm thick	210-114	126	30A2
2.5 mm thick	210-115	126	30A2
DIN 35 x 7.5 (Al)			
undrilled	210-196	76	16A6
DIN 35 x 15 (Al)			
2.5 mm thick	210-198	308	160A10

Current applies to rails of 1 m length

When using standard DIN-rails as ground conductor busbars, please refer to the maximum current capacities listed above. Steel DIN-rails are not suited for PEN (ground and N-conductor) applications per EN 60947-7-2 (VDE 0611, Part 3).