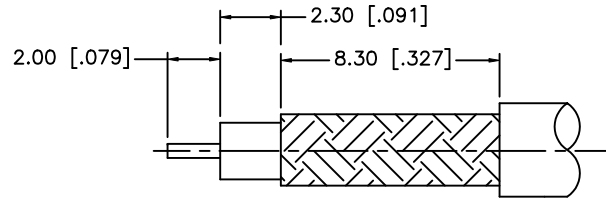
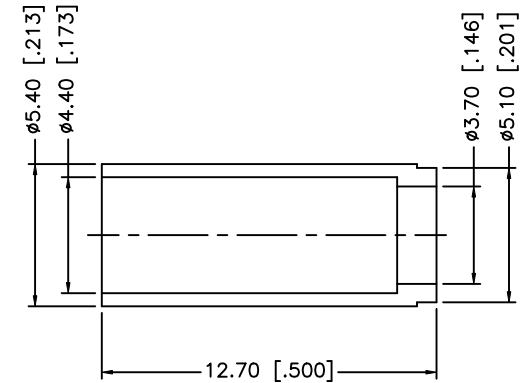
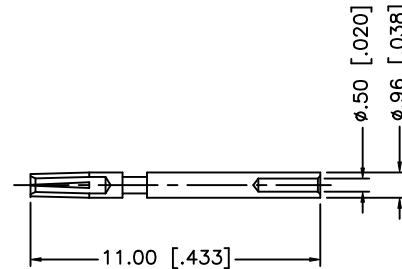
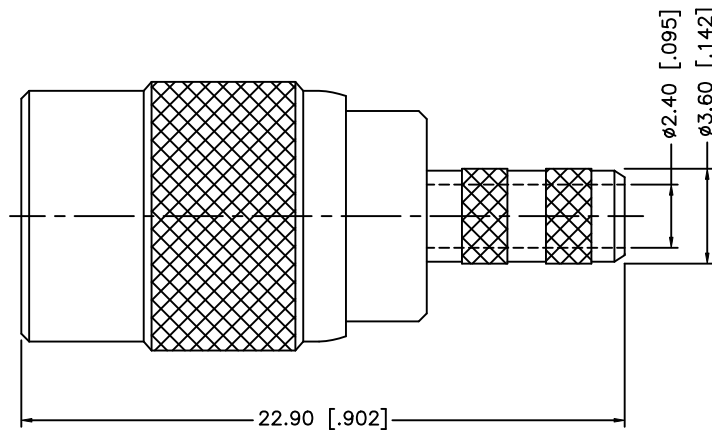


REV.	DATE	ECR NO.	DESCRIPTION
NC	05/31/00	-	INITIAL RELEASE
A	11/20/08	-	UPDATE DRAWING FORMAT, REVISE NOTES 1 AND 2.



RECOMMENDED
CABLE STRIPPING DIM'S



NOTES:

1. CRIMPED FERRULE HEX CRIMP SIZE .178" [4.52]
2. CONTACT PIN TO SOLDER.

8				UNLESS OTHERWISE SPECIFIED DIMENSIONS ARE IN MILLIMETERS. DIMENSIONS IN [] ARE IN INCHES AND FOR CUSTOMER REFERENCE ONLY.	APPROVALS	DATE	<h1 style="color: blue;">Amphenol Connex</h1>
7					UNLESS OTHERWISE SPECIFIED TOLERANCES FOR MILLIMETERS ARE: 0.5 - 8mm ± 0.20mm 8 - 30mm ± 0.40mm 30 - 120mm ± 0.50mm	DRAWN GRS	
6				UNLESS OTHERWISE SPECIFIED TOLERANCES FOR INCHES ARE: .020 - .315 = ± 0.007" .315 - 1.180 = ± 0.015" 1.180 - 4.724 = ± 0.020"	CHECKED		SMB SNAP LOCK PLUG (FOR AT&T 735A CABLE)
5					ISSUED		
4	FERRULE	COPPER	NICKEL	1	SHEET	1 OF 1	142289
3	CONTACT PIN	BER. COPPER	GOLD	1	CAD FILE	C:/142/142289.DWG	DWG. NO. 142289.DWG
2	INSULATOR	PTFE	NATURAL	1			REV. A
1	BODY	BRASS	NICKEL	1			SIZE A
	DESCRIPTION	MATERIAL	FINISH	QTY	DO NOT SCALE DRAWING		SCALE NA