

HONEYWELL

See full Datasheet below...

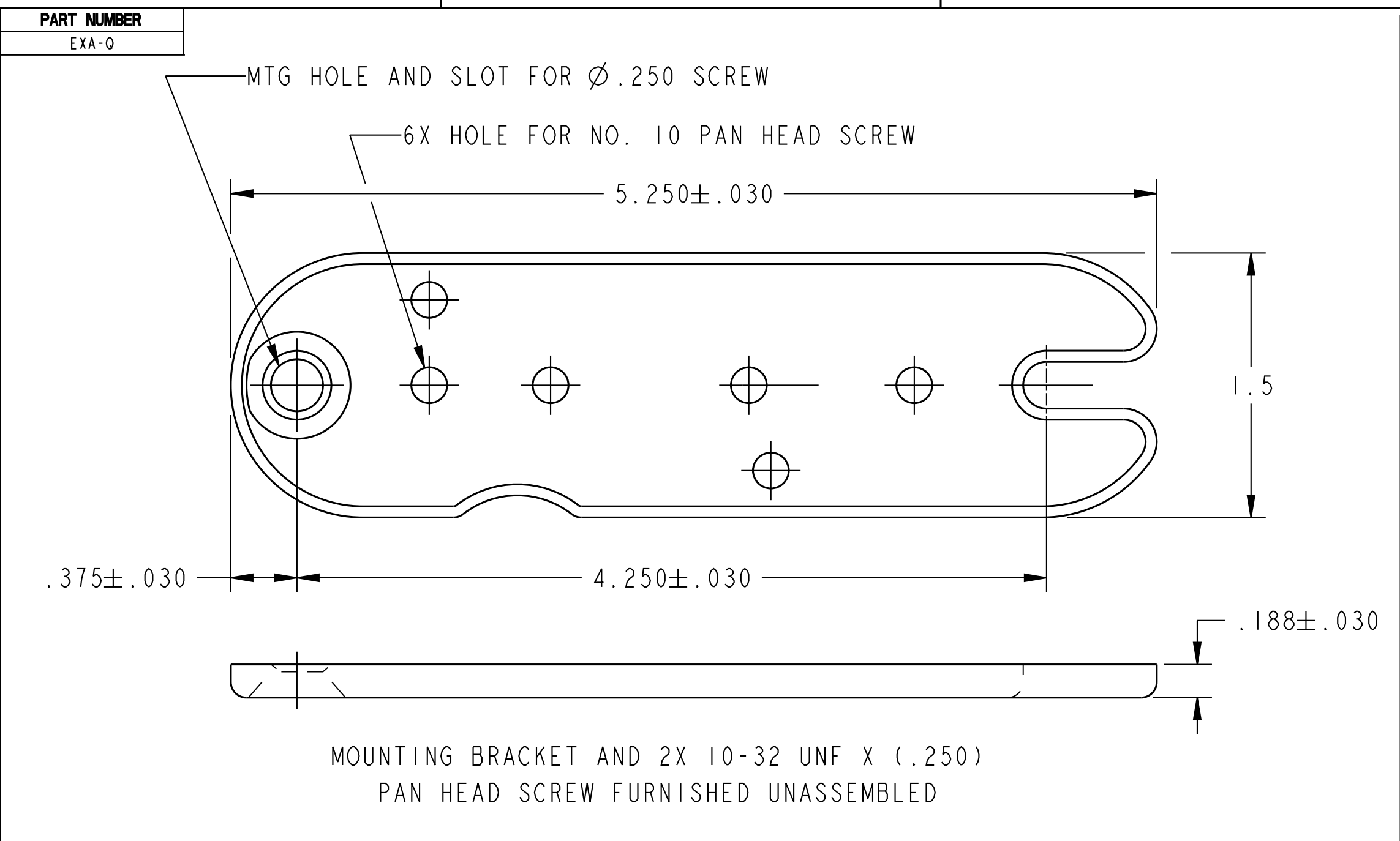
onlinecomponents.com
THE ONLINE DISTRIBUTOR OF ELECTRONIC COMPONENTS

BUY NOW

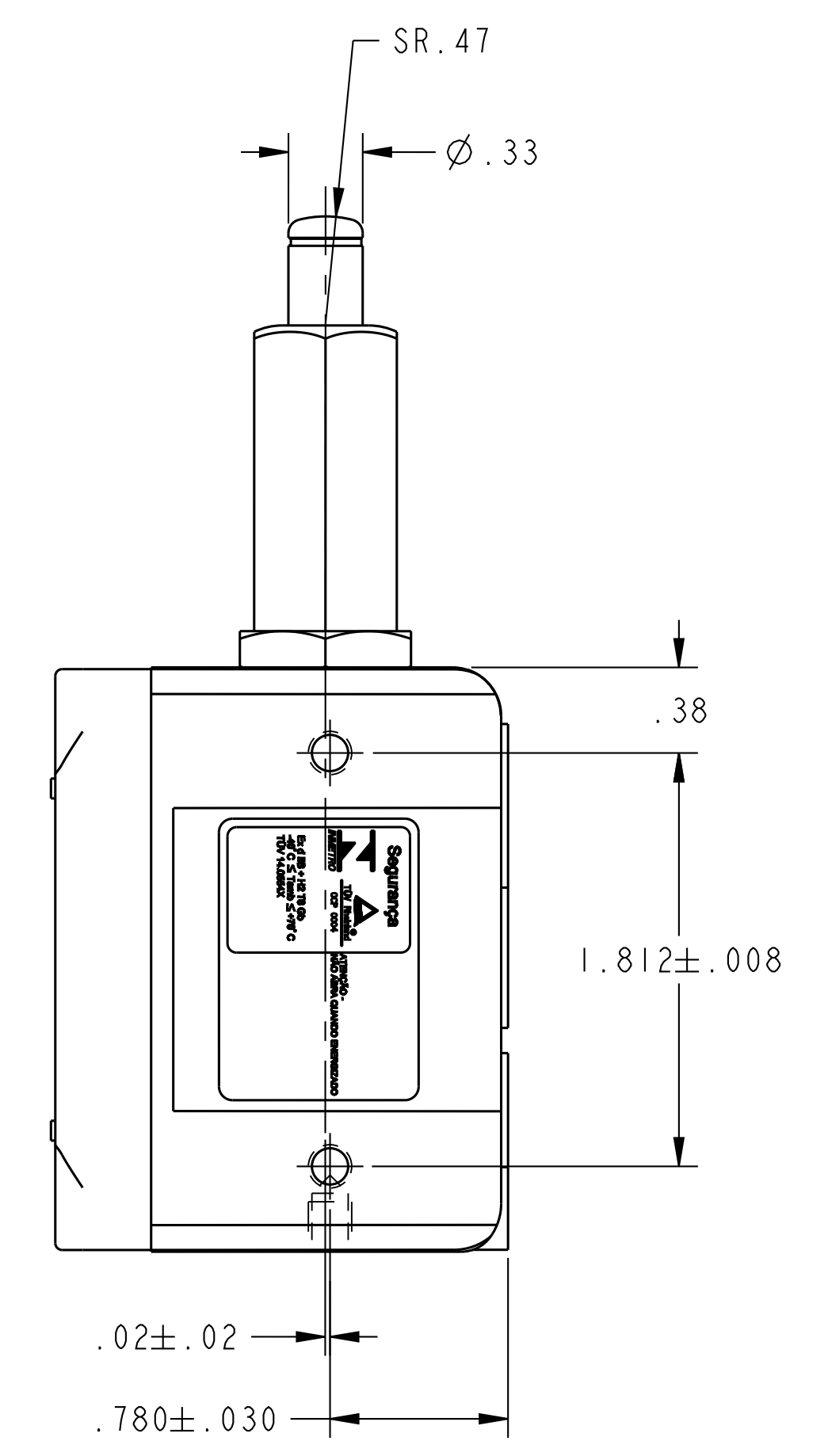
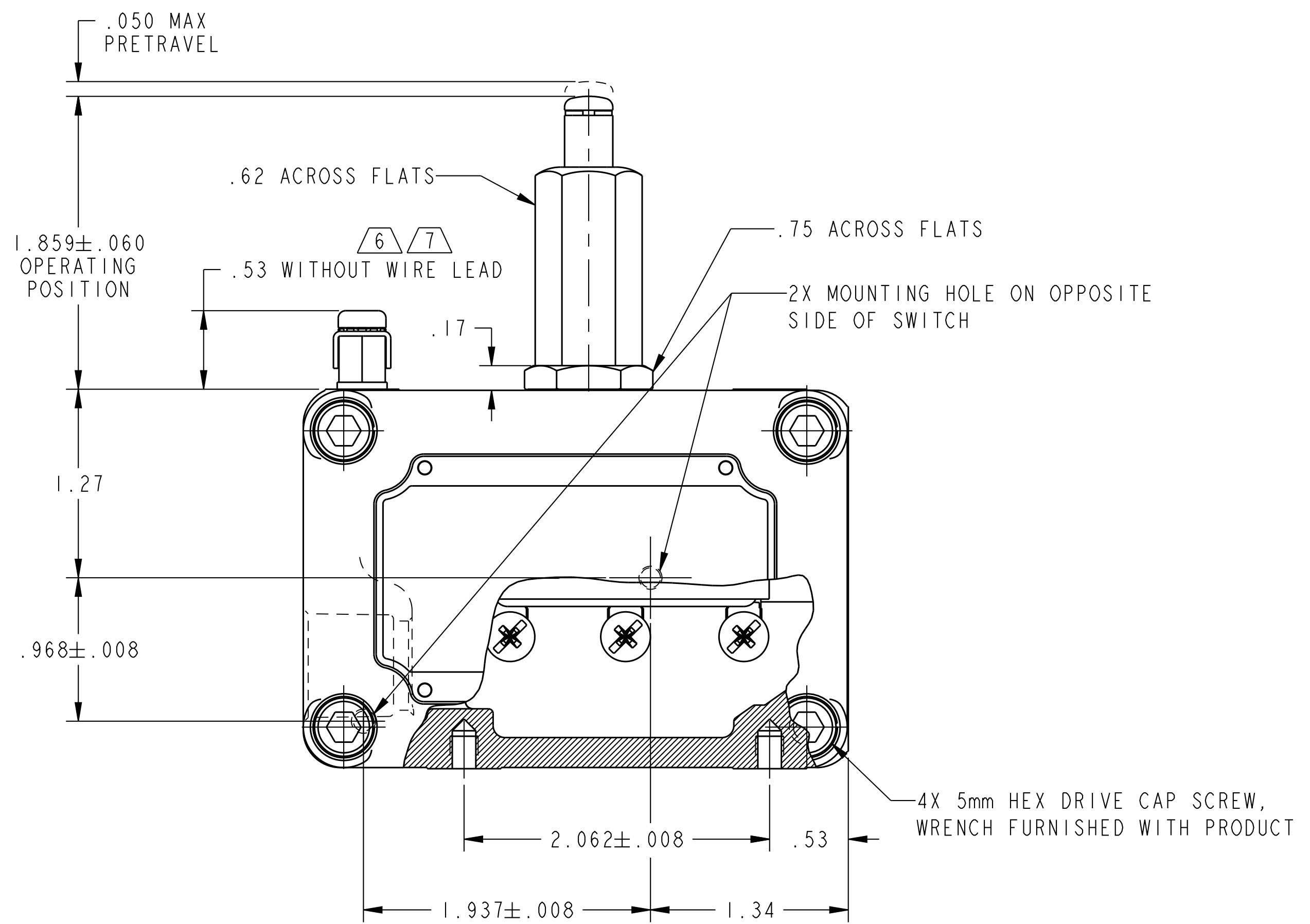
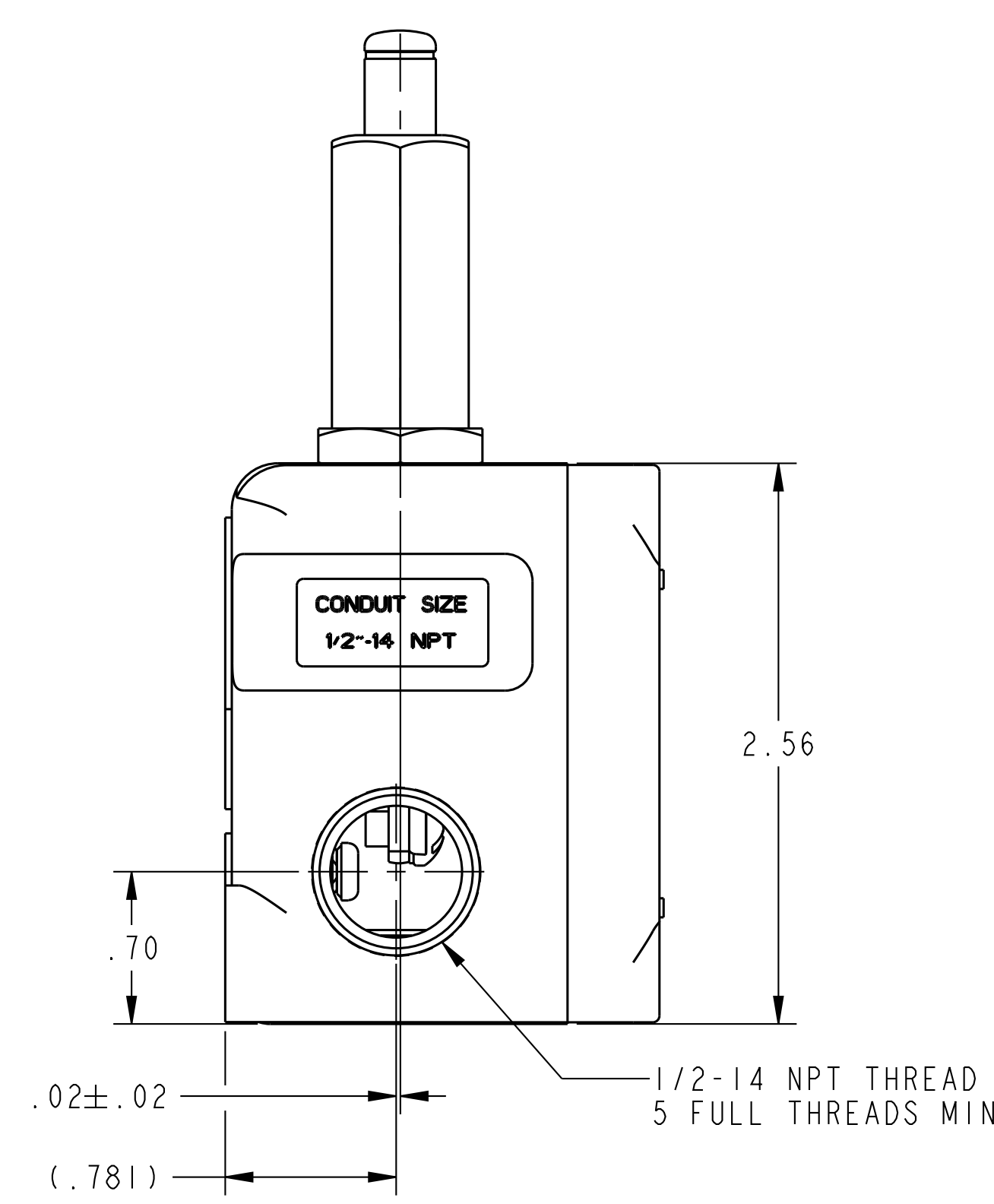
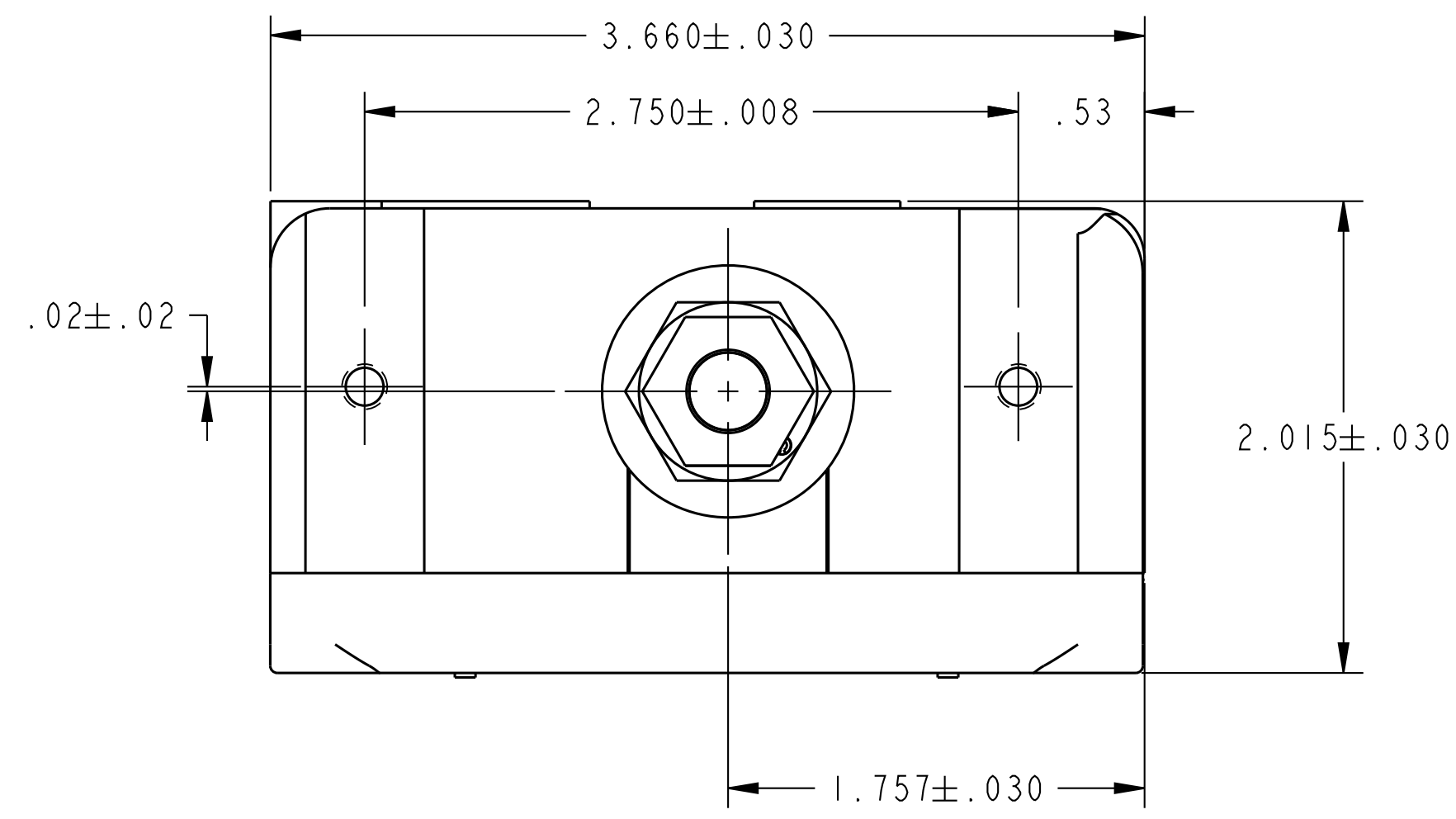
 **MASTER**TM
ELECTRONICS

BUY NOW

masterelectronics.com & onlinecomponents.com
are **authorized** e-commerce distributors
of electronic components.



REVISION HISTORY					
REV	DOCUMENT	DESCRIPTION	CHGD BY	DATE	APPROVED
22	0129443	REDRAWN WITH CHANGE	RGA	2016-04-29	M. MANTUA



- NOTES:
- 8X MOUNTING SCREW HOLE 10-32 UNF-2B THREADS X (.219) DEEP
 - 8-32 UNC X (.219) TERMINAL SCREWS AND CUPWASHERS
 - EXPLOSION PROOF - UNDERWRITER'S LAB INC. LISTED FOR HAZARDOUS LOCATIONS NEMA 7, CLASS I, GROUPS C AND D, NEMA 9, CLASS II, GROUPS E, F AND G
 - EUROPEAN HAZARDOUS LOCATIONS DESIGNATION: Ex d IIB+H2 T6 CATEGORY II 2G
 - SEAL RATING: NEMA I
 - EXTERNAL GROUND SCREW MAY BE ASSEMBLED TO ANY UNUSED MOUNTING SCREW HOLE
 - ASSEMBLE PROVIDED SPLIT LOCKWASHER BETWEEN GROUND LUG AND HOUSING
 - BRAZILIAN HAZARDOUS LOCATION DESIGNATION: Ex d IIB+H2 T6 Gb -40°C ≤ T_{amb} ≤ +70°C

CHARACTERISTICS	ELECTRICAL DATA
OPERATING FORCE----- 2 LB MAX	CONTACT ARRANGEMENT S P D T
RELEASE FORCE----- 1/2 LB MIN	-L23- 20 A-125, 250, OR 480 VAC 10 A-125 VAC "L"
DIFFERENTIAL TRAVEL----- .009 MAX	1 HP-125 VAC, 2 HP 250 VAC
OVERTRAVEL----- .125 MIN	1/2 A-125 VDC; 1/4 A-250 VDC
SWITCH-BASIC REPLACEMENT-- BA-2R-P4	

UNLESS OTHERWISE SPECIFIED DIMENSIONS ARE IN INCHES		THIRD ANGLE PROJECTION				Honeywell SWITCH - ENCLOSED			
DECIMAL TOL	NO PLACE ---	1 PLACE --- ±.030	2 PLACE --- ±.015			3 PLACE --- ±.005	SIZE D CAGE CODE 91929 REF. WT.: RELEASE DATE DRW: GJW RDE: - OA: - CHK: AK	DWG NO EXA-Q REF. WT.: SHEET 1 of 1	TYPE I REV 22
MATERIAL		FINISH		APPLICABLE DOCUMENTS: ASME Y14.100-2013 ASME Y14.5-2009 COMPUTER GENERATED DRAWING: PRO/ENGINEER				HONEYWELL CONFIDENTIAL THIS DOCUMENT CONTAINS PROPRIETARY INFORMATION AND SUCH INFORMATION MAY NOT BE DISCLOSED TO OTHERS FOR ANY PURPOSES WITHOUT WRITTEN PERMISSION FROM HONEYWELL	