



Product and Wire Identification Benchtop Printer Comparison Guide

Once you know which label material you need for your next design, the next step is finding the right printer to create quality labels on-demand. Brady has a variety of high-performance, reliable printers to choose from.



BBP®12 Label Printer
(300 dpi)



BBP®33 Label Printer
(300 dpi)



BradyPrinter i5100
(300 dpi) / (600 dpi)



BradyPrinter i7100
(300 dpi) / (600 dpi)



BBP®72 Printer
(300 dpi)



Wraprotor A6500
(300 dpi)

Printer Overview

0.8 – 4 in. wide entry-level clamshell-style desktop THT printer for lower-volume general industrial labeling with a small footprint and economical price point. Printer uses 1 in. small core THT rolls in printer or larger 3 in. core THT rolls externally fed.	0.5 – 4 in. wide THT printer for mid-to-low volume labeling and 20-sec. supply changeovers, no label waste, and no calibration! For lab ID, wire ID, electronics and product ID, general industrial ID, GHS labeling and facility and safety ID.	1 – 4 in. wide THT printer featuring sensors that reduce label waste and automatically apply best printer settings when using IP-enabled supplies. For product ID, electronics ID, wire and cable ID, general industrial ID and lab labels. Uses 3 in. core labels.	0.4 - 4 in. production line THT printer that features high print accuracy and clarity, even on difficult-to-print materials, and an easy-to-use interface. Ideal for electronics ID, product and wire ID, component labeling and general industrial ID.	Specialty THT printer for printing double-sided wire ID sleeves. Can also be used to print two sides of other types of materials like tag stock, if appropriate materials are used.	Specialty THT system prints then applies adhesive labels to wires and cables making labeling faster and easier. Improves production flow and reduces labor costs.
--	--	---	---	---	---

Output and Label Creation Software (Sold Separately)

1000 labels/day 5 days/week	3000 labels/day 5 days/week	5000 labels/day 5 days/week	7000+ labels/day 7 days/week	7000+ labels/day 7 days/week	7000+ labels/day 7 days/week
LabelMark, Brady Workstation, CodeSoft, 3rd party Windows® based software, direct-to-database scripting	LabelMark, CodeSoft, Brady WorkStation, limited direct-to-database scripting	LabelMark, Brady Workstation, 3rd party Windows® based software, direct-to-database scripting	LabelMark, Brady Workstation, 3rd party Windows® based software, direct-to-database scripting	LabelMark, CodeSoft, 3rd party Windows® based software, direct-to-database scripting	LabelMark, Brady Workstation, direct-to-database scripting

Compatible Label and Ribbon Supplies

19 materials 142 stock parts - 1 in. core 1000+ stock parts - 3 in. core (external fed). Custom available	40 materials 430 stock parts (wire and product ID) 220 stock parts (safety facility ID) Custom available (product and wire ID)	76+ materials 2900 stock parts - 3 in. core Custom parts available	76+ materials 3400 stock parts - 3in. core Custom parts available	5+ materials 150+ stock parts-double-side 225+ stock parts-single-side Custom parts available	3 materials 17 stock parts Custom parts available
Ribbon: loose roll, thread-thru Labels: loose 1 in. open core roll (or 3 in. core external-fed)	Ribbon: snap-in cartridge Labels: drop-in cartridge 20-second complete changeover	Ribbon: loose roll, thread-thru IP-enabled ribbon Labels: loose 3 in. open core roll	Ribbon: loose 1in. open core roll, thread-thru Labels: loose 1- 3 in. open core roll	Ribbon: loose 1 in. open core roll, thread-thru Labels: loose 3 in. open core roll	Ribbon: loose 1 in. open core roll, thread-thru Labels: cartridge, thread-thru

Contact your authorized distributor or visit BradyID.com to get started.



BBP®12 Label Printer
(300 dpi)



BBP®33 Label Printer
(300 dpi)



BradyPrinter i5100
(300 dpi) / (600 dpi)



BradyPrinter i7100
(300 dpi) / (600 dpi)



BBP®72 Printer
(300 dpi)



Wraptor A6500
(300 dpi)

Top Applications

General Industrial ID
Product ID
Lab ID
Limited Wire ID

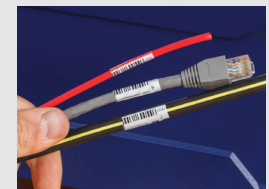
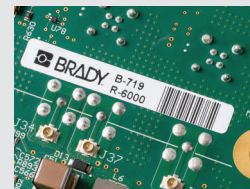
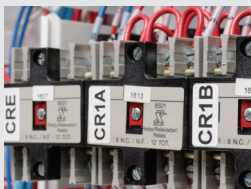
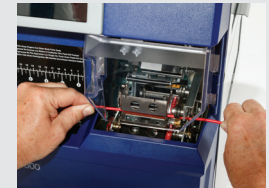
Lab ID
Product ID
Wire ID
Datacomm ID
Safety and Facility ID

Product ID
Electronics and Circuit Board ID
Wire Cable and Panel ID
Datacomm ID
Logistics/Warehouse ID
Lab ID

Wire Cable and Panel ID
Product ID
Electronics and Circuit Board ID
Datacomm ID
Logistics/Warehouse ID
Raised Panel Push Buttons
Nomex® tags

Double-Sided Heat
Shrink Wire Sleeves

Wire and Cable ID
(B-427, B-499, B-472)



USA
Customer Service: 1-888-272-3946
Inside Sales: 1-888-311-0775
BradyID.com

Canada
Customer Service: 1-800-263-6179
BradyCanada.ca

Mexico
Customer Service: 1-800-262-7777
Inside Sales: 1-800-262-7777 ext 177
BradyLatinAmerica.com